



WAREHOUSE FOR LEASE

AVAILABLE SPACE

► **12,652 SF**



- **Property Size:** 25,304 SF
- **Ceiling Height:** 14' - 15' clear
- **Loading Docks:** One (1) dock door
- **Zoning:** PDR-1
- **Heating:** Electric
- **Lot Size:** 0.49 acres
- **Local Ownership and Property Management**
- **Located in Ward 4 nearby New Hampshire Avenue & Georgia Avenue**

AARON CARROLL

acarroll@klnb.com | 202-652-2333

CHRISTOPHER KUBLER

ckubler@klnb.com | 443-574-1415

LOCATION

6210 CHILLUM PLACE, NW

WASHINGTON, DC 20011



AARON CARROLL

acarroll@klnb.com | 202-652-2333

CHRISTOPHER KUBLER

ckubler@klnb.com | 443-574-1415

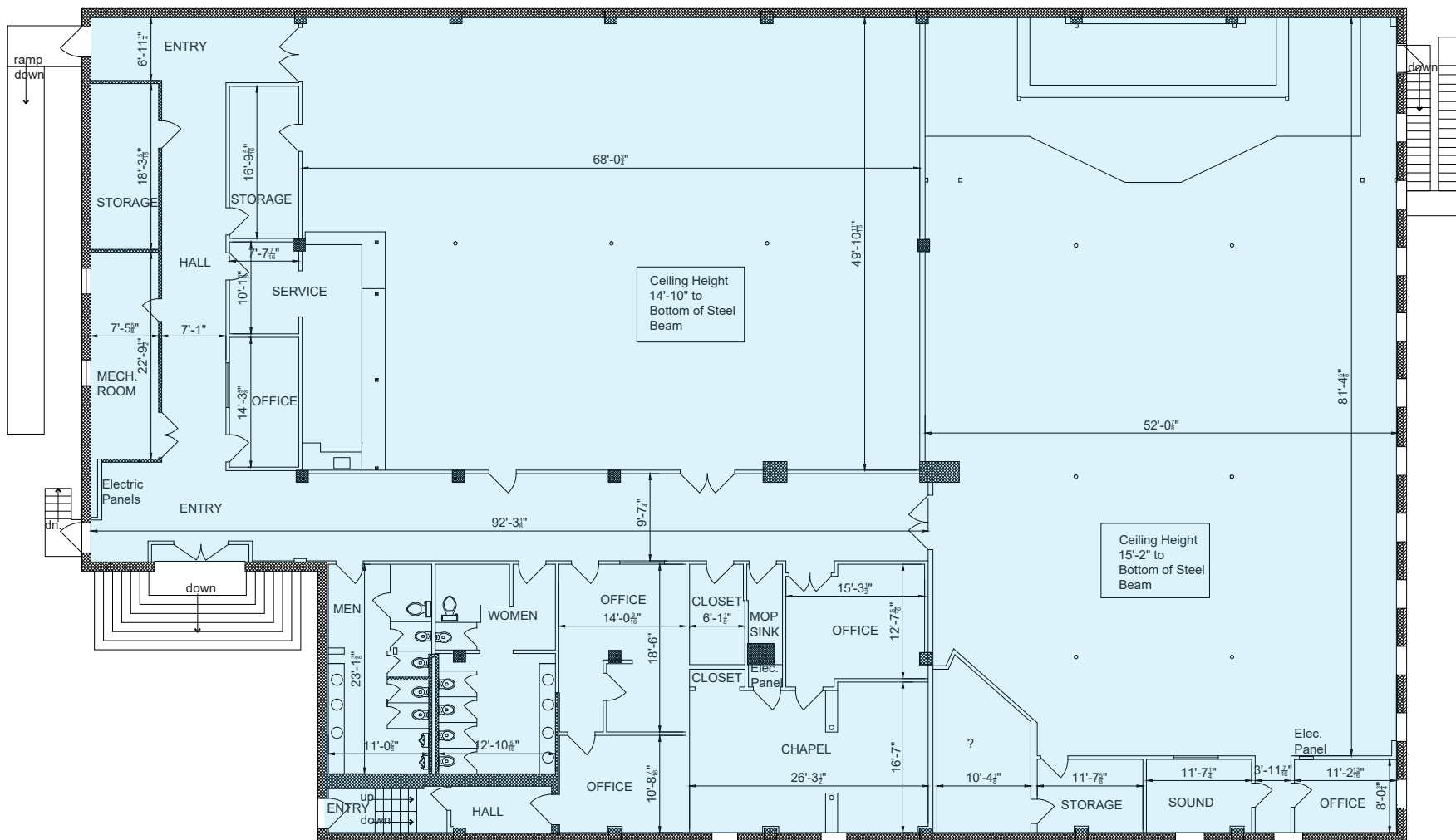


FLOOR PLAN

6210 CHILLUM PLACE, NW

WASHINGTON, DC 20011

12,652 SF
AVAILABLE



AARON CARROLL

acarroll@klnb.com | 202-652-2333

CHRISTOPHER KUBLER

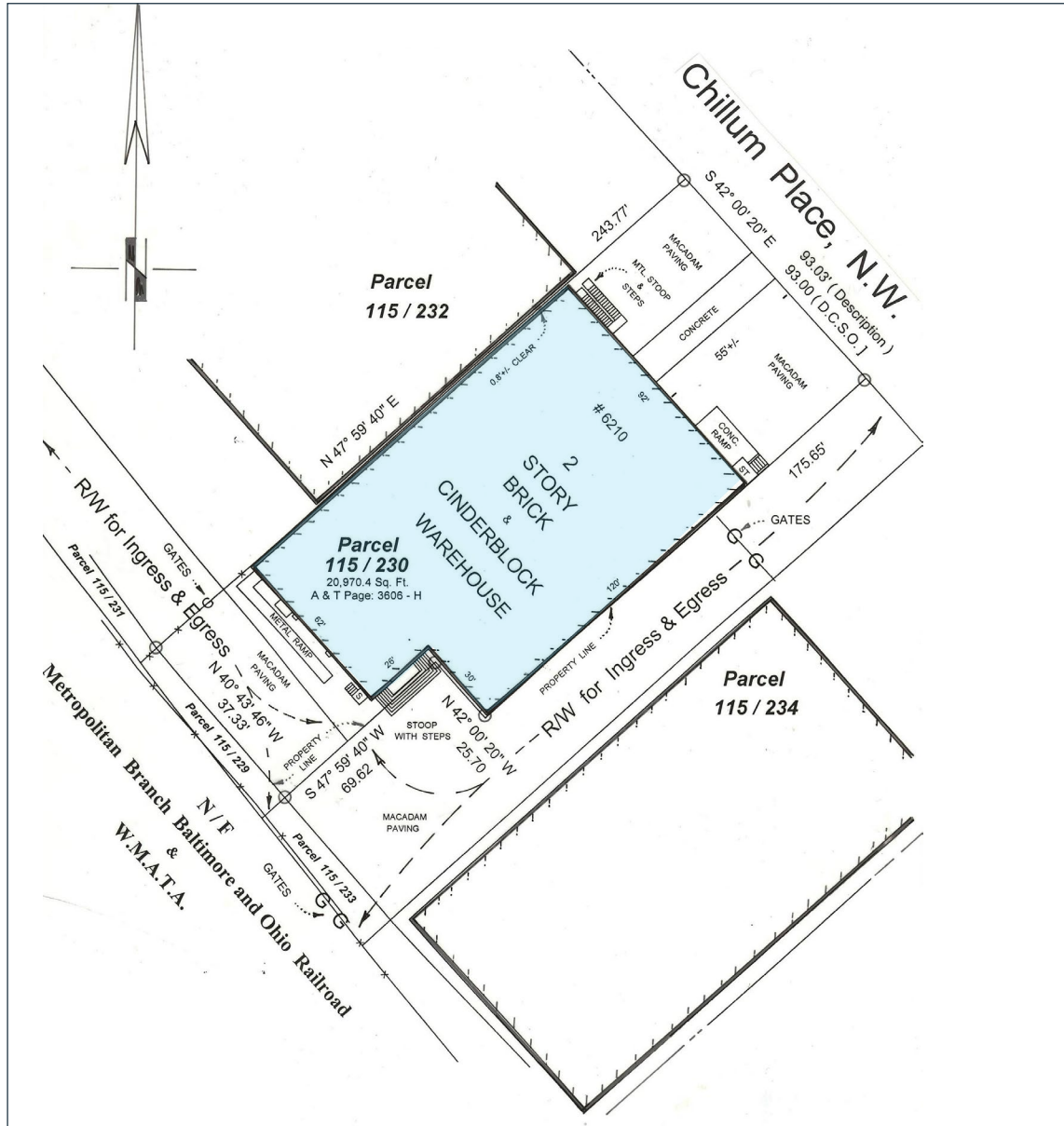
ckubler@klnb.com | 443-574-1415



SURVEY MAP

6210 CHILLUM PLACE, NW

WASHINGTON, DC 20011



AARON CARROLL

acarroll@klnb.com | 202-652-2333

CHRISTOPHER KUBLER

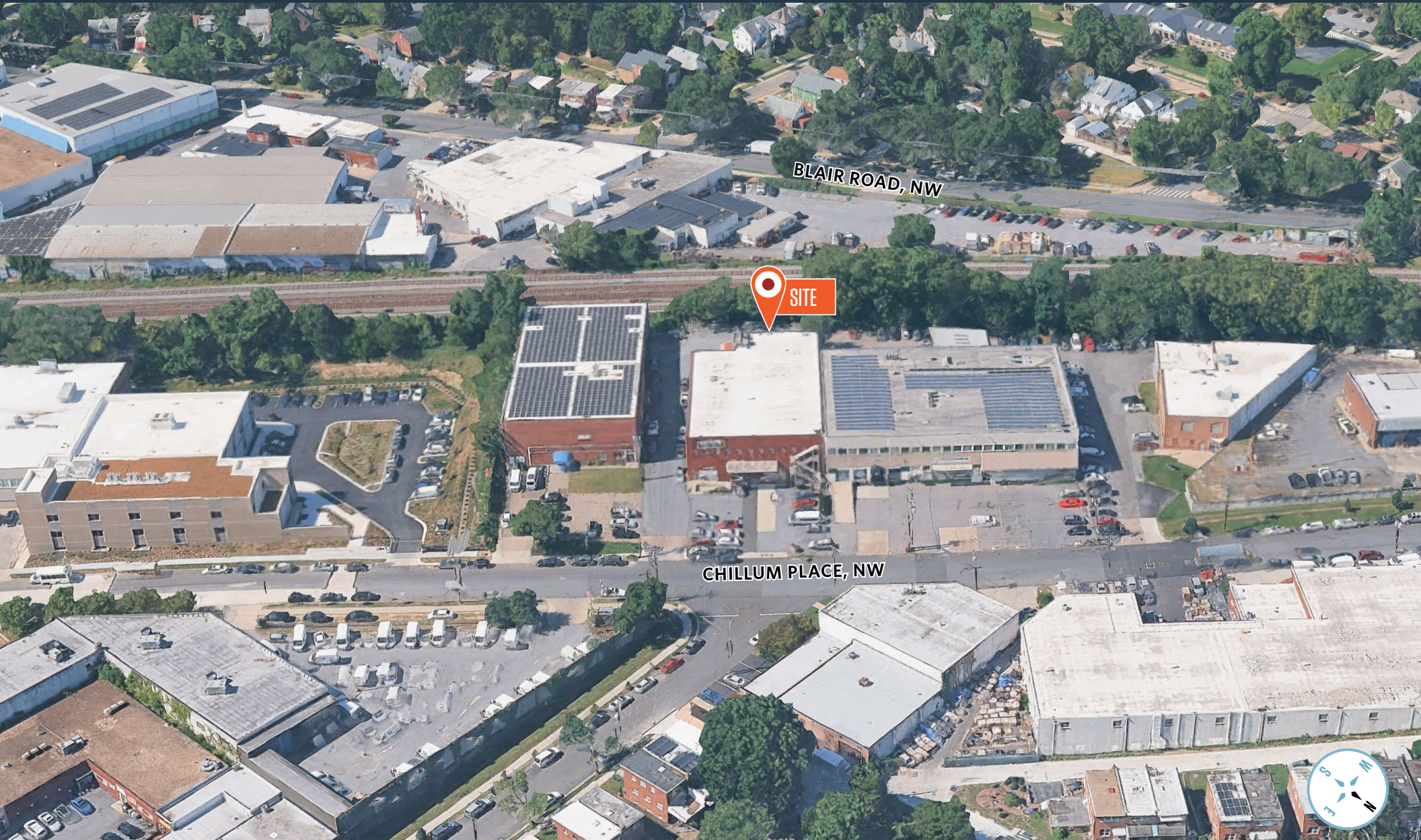
ckubler@klnb.com | 443-574-1415



AERIAL VIEW

6210 CHILLUM PLACE, NW

WASHINGTON, DC 20011



AARON CARROLL

acarroll@klnb.com | 202-652-2333

CHRISTOPHER KUBLER

ckubler@klnb.com | 443-574-1415





6210 CHILLUM PLACE, NW

WASHINGTON, DC 20011

FOR MORE INFORMATION, PLEASE CONTACT:

AARON CARROLL

acarroll@klnb.com

202-652-2333

CHRISTOPHER KUBLER

ckubler@klnb.com

443-574-1415

9881 Broken Land Parkway, Suite 300, Columbia, MD 21046

.....

klnb.com

CLICK TO VIEW PROPERTY WEBSITE

While we have no reason to doubt the accuracy of any of the information supplied, we cannot, and do not, guarantee its accuracy. All information should be independently verified prior to a purchase or lease of the property. We are not responsible for errors, omissions, misuse, or misinterpretation of information contained herein and make no warranty of any kind, express or implied, with respect to the property or any other matters.