

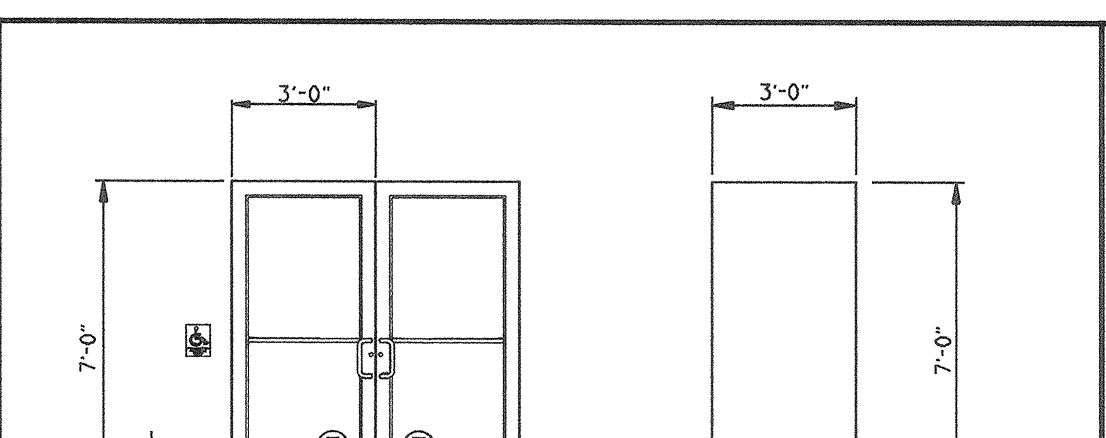
SHOWROOM FLOOR PLAN

1/8"

	8x8x16 RUNNING BOND CONCRETE MASONRY UNITS-SOLID GROUT	1 A-3.1
	EXTERIOR: 2x8 STUDS AT 16" OC W/ R-8 BATT INSULATION (SEE SECTIONS FOR FINISH MATERIALS) INTERIOR: 2x8 STUDS AT 16" OC W/ 5/8" TYPE X GYPSUM WALLBOARD EACH SIDE (DEMISING WALL)	2,3,5 A-3.1
	METAL WALL PANELS OVER STEEL GIRTS-PROVIDE R-10 VINYL FACED BLANKET INSULATION TO ROOF DECK	4 A-3.1
	INTERIOR 2x4 STUDS AT 16" OC WITH 5/8" GYPSUM WALLBOARD EACH SIDE	6 A-3.1
	ALUMINUM STOREFRONT SYSTEM	

OCCUPANT LOAD (IPC TABLE A):					
	AREA	LOAD FACTOR	OCCUPANT LOAD	REMARKS	
M OCCUPANCY	5,880 SF	200	29	OFFICE BUILDINGS	
S-1 OCCUPANCY	7,560 SF	5,000	1	STORAGE USE	
ACCESSORY USE					
TOTAL	13,420 SF		30		

OCCUPANCY	REOD WC		REOD UR		REOD LAV	
	MEN	WOMEN	MEN	WOMEN	MEN	WOMEN
RETAIL STORE	15	15	11-100	11-25	0-0-25	1/2 WC 1/2 WC
TOTAL REOD						
TOTAL PROVIDED						



ALUMINUM STOREFRONT DOOR MEDIUM STYLE (SERIES 350) SINGLE ACTING WITH CLEAR ANODIZED FINISH AND CLEAR GLAZING BY "KAWNEER" OR EQUAL

EXTERIOR: 1 3/4" 18 GA HOLLOW METAL-PAINT

INTERIOR: 1 3/4" 18 GA HOLLOW METAL-PAINT

ROLLING SERVICE DOOR: MEDIUM DUTY SERIES 886 WITH 22 GA GALV STEEL FLAT (TYPE F-285) SLATS. FACE OF WALL STANDARD MOUNTING. CHAIN HOIST OPERATION WITH GALV STEEL ROLL-FORMED SHAPED GUIDES AND EXTRUDED ALUMINUM BOTTOM BAR AND WEATHER SEAL. PROVIDE 24 GA GALVANIZED STEEL HOOD. FACTORY FINISH

SET	DESCRIPTION	QUANTITY	DETAIL
SET ONE (STOREFRONT)	STANDARD HARDWARE PACKAGE CONSISTING OF: OFFSET PIVOT HINGES WITH SINGLE ACTING CONCEALED FLOOR CLOSER, "PANIC GUARD" EXIT DEVICE AND PULL HANDLE EACH LEAF STYLE G-2 WITH WEATHERSTRIPPING PROVIDE STANDARD CYLINDER DEADLOCK EACH LEAF		
1	THRESHOLD	1	PEMKO 272A
SET TWO (OFFICE)			
1 1/2 PAIR	BUTTS	1	STANLEY 4 1/2x4 1/2 NRP
1	LOCKSET	1	SCHLAGE D53PD US260
1	DOOR STOP	1	TRIMCO 1201 US260 (3" HIGH)
SET THREE (OFFICE)			
1 1/2 PAIR	BUTTS	1	STANLEY 4 1/2x4 1/2 NRP
1	LATCHSET	1	SCHLAGE D10S US280
1	DOOR STOP	1	TRIMCO 1201 US260 (3" HIGH)
SET FOUR (TOILET ROOM)			
1 1/2 PAIR	BUTTS	1	STANLEY 4 1/2x4 1/2 NRP
1	PRIVACY LOCKSET	1	SCHLAGE D40S US260
1	DOOR STOP	1	TRIMCO 1201 US260 (3" HIGH)
1	CLOSER	1	NORTON P-8301 BF AL
SET FIVE (EXTERIOR)			
1 1/2 PAIR	BUTTS	1	STANLEY 4 1/2x4 1/2 NRP
1	LOCKSET	1	SCHLAGE D53PD US260
1	DOOR STOP	1	TRIMCO 1201 US260 (3" HIGH)
1	DOOR SHOE	1	PEMKO 271 A
1	WEATHERSTRIPPING	1	PEMKO PK338L 171201
SET SIX (PAIR)			

NOTES

- ALL LOCKSET/LATCHSET HARDWARE SPECIFIED HEREIN IS SINGLE ACTION LEVER TYPE TYPICAL UNO
- THRESHOLDS AT DOORWAYS SHALL NOT EXCEED 1/2" ABOVE FINISH FLOOR OR LANDING. SEE DETAIL 14/A-3.1 FOR THRESHOLD DETAIL

- 1 WALL LEGEND/FINISH NOTES**
- LOCATION AND NUMBER OF FIRE EXTINGUISHER CABINETS SHALL BE DETERMINED BY THE COUNTY OF KERN FIRE DEPARTMENT
● FE: FIRE EXTINGUISHERS: POTTER ROEMER MODEL 3010-10# ABC
 - ACCESSIBLE ENTRANCE: NO PANIC DEVICE REQUIRED PER THE EXCEPTION I CBC 1008.11.0. DOOR IS IN COMPLIANCE WITH CBC SECTION 1008.18.3, ITEM 2. SEE SHEET T-1; GENERAL NOTE #4
 - 4" HIGH CONCRETE EQUIPMENT PAD-VERIFY SIZE
 - 6"Ø CONCRETE FILLED STEEL BOLLARD TYPICAL (2) INSIDE AND (2) EXTERIOR AT EACH OVERHEAD DOOR. PAINT
 - 4"x5" ROOF DOWNSPOUT, DAYLIGHT "12" AFF TYP 4. SET OVERFLOW 2" ABOVE BOTTOM OF GUTTER
 - LOCATION FOR RECYCLING BINS PER CA GREEN CODE 5.410.1
 - DESIGNATED LOCATION FOR SECURE BICYCLE STORAGE PER CAL GREEN SECT 5.106.4.2 SHOULD THE BUILDING OCCUPANT LOAD EXCEED TEN (10)
 - PROPERTY LINE
 - LINE OF SOFFIT/FASCIA ABOVE

3 TOILET FIXTURES

CODE	MATERIAL	MANUFACTURER	DESCRIPTION
CONC	CONCRETE		
C.1	CARPET		NOTE A
SV.1	SHEET VINYL	ARMSTRONG "CORLON"	NOTE A
VCT	VINYL COMPOSITION TILE	ARMSTRONG "STANDARD EXCELON"	12"x12" NOTE A
TS	RUBBER TOPSET BASE	BURKE	4" HIGH NOTE A
FRP	FIBER REINFORCED PANEL		WHITE
P-1	PAINT: FLAT		
P-2	PAINT: SEMI-GLOSS	SHERWIN WILLIAMS	NOTE A

4 FINISH SCHEDULE

NO.	DESCRIPTION	NOTES
1	FLOOR MATERIAL	A. OWNER SHALL SELECT COLOR FROM MANUFACTURER'S STANDARD COLOR PALLETTE
2	BASE MATERIAL	B. GYPSUM WALLBOARD SHALL BE LEVEL 4 WITH LIGHT SKIP TROWEL FINISH
3	WALL FINISH	

6 DOOR SCHEDULE

NO.	DESCRIPTION	TEMPERED GLAZING
1	ALUMINUM STOREFRONT DOOR	①

8 HARDWARE SCHEDULE

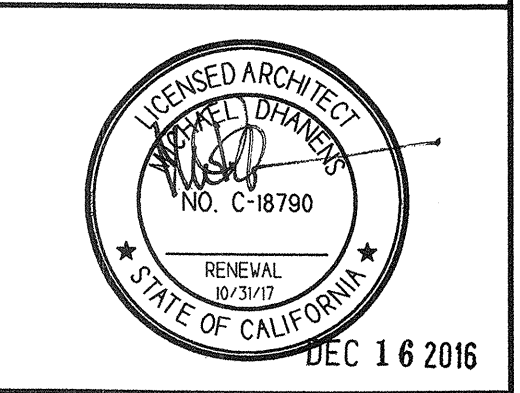
NO.	DESCRIPTION	DETAIL
1	THRESHOLD	PEMKO 272A
2	BUTTS	STANLEY 4 1/2x4 1/2 NRP
3	LOCKSET	SCHLAGE D53PD US260
4	DOOR STOP	TRIMCO 1201 US260 (3" HIGH)
5	LATCHSET	STANLEY 4 1/2x4 1/2 NRP
6	DOOR STOP	SCHLAGE D10S US280
7	DOOR STOP	TRIMCO 1201 US260 (3" HIGH)
8	DOOR SHOE	PEMKO 271 A
9	WEATHERSTRIPPING	PEMKO PK338L 171201

9

APPROVED
DEC 21 2016
KERN COUNTY BUILDING INSPECTION DEPT.

10

MICHAEL DHANENS ARCHITECT
661/324-4141
P.O. BOX 82155
BAKERSFIELD, CALIFORNIA
93380
C-18790



PROJECT
MV Home Furnishings
APN 368-060-14
7405 Rosedale Highway
Bakersfield, California

SHOWROOM

FLOOR PLAN

PERMIT K201603382

NO.	REVISIONS
1	PLAN CHECK (09/23/16)
2	
3	
4	
5	
6	
7	
8	
9	
10	

NO.	ISSUED FOR
1	PERMIT REVIEW (05/12/16)
2	DESIGN DEVELOPMENT (02/12/16)
3	OWNER REVIEW (02/03/16)

DATE	SHEET
05/12/16	

DRAWN	PROJECT NUMBER	SHEET
	703.02	A-2.1

ARCHITECTURE