



# FOR SALE OR LEASE

\$12,000,000 (\$338 PSF) | \$2.00 PSF NNN (\$70,940 /Mo.)

±35,470 SF IN THE ARTS DISTRICT



SANTA FE AVENUE

JESSE STREET

 CUSHMAN & WAKEFIELD  
GILL | BURNS | YOO

# HIGHLIGHTS



Exceptional warehouse  
or studio building



Recent rezone provides  
clear development path



Prime Arts District location.  
Walking distance to restaurants  
and amenities



Opportunity Zone  
benefits



Deliverable to  
Owner-User July, 2026



Future development  
potential



Located within  
the Arts District BID, providing  
clean and safe environment



3 street frontage  
with high visibility  
on Santa Fe Ave



# SPECIFICATIONS



TOTAL BUILDING

±35,470 SF



LAND SIZE

±38,873SF



MEZZANINE

±6,347 SF



OFFICE SIZE

±3,920 SF



CLEAR HEIGHT

25'



POWER

600 AMPS



SPRINKLERD

YES



PARKING

±30 SPACES



LOADING

2 DH / 1 GL



YEAR BUILT

1996



CONSTRUCTION

CONCRETE TILT-UP



ZONING

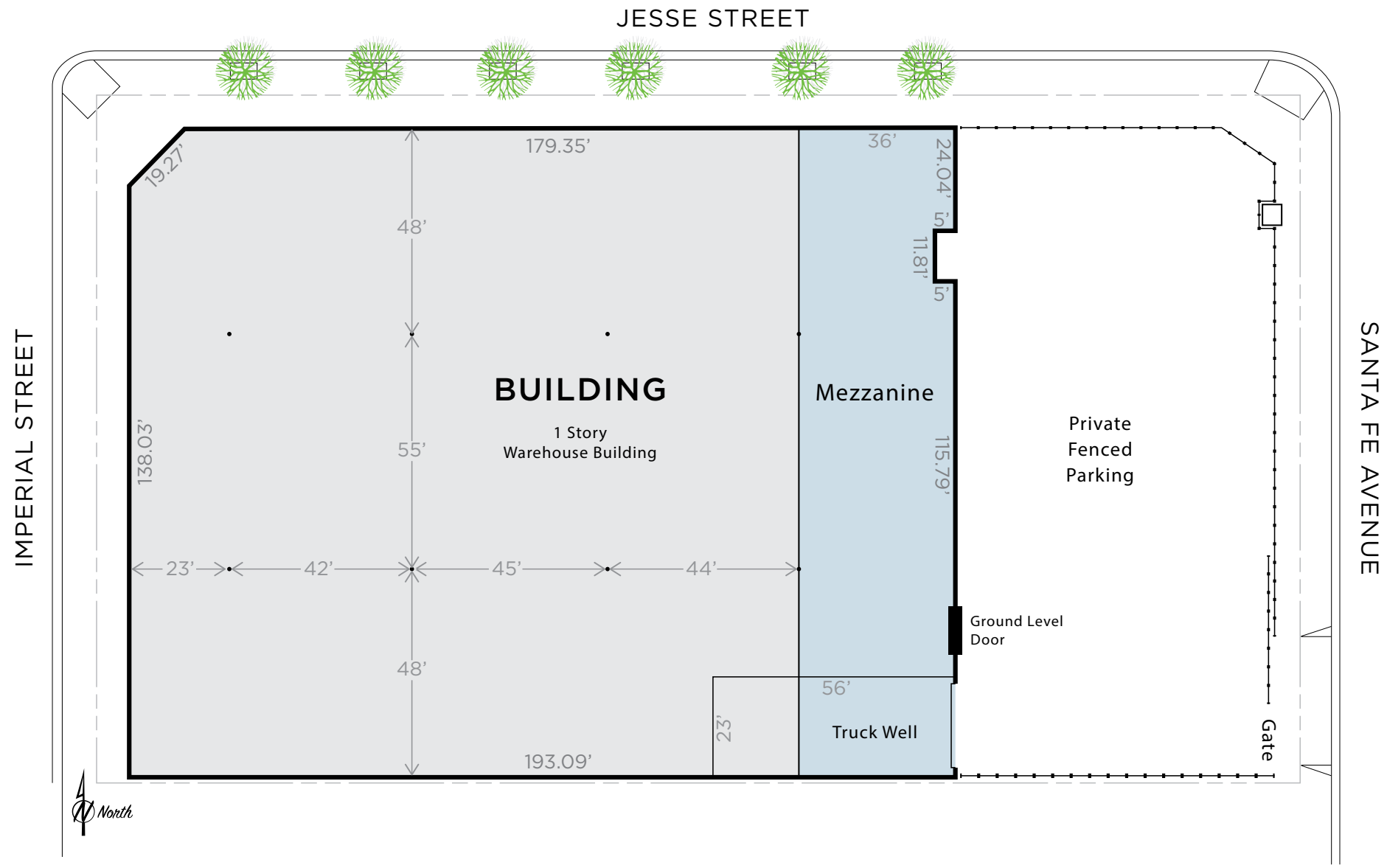
LAM3



# PHOTOS



# SITE PLAN



For discussion purposes only and not to scale - Buyer to verify.

# WALKABLE EXPERIENCE

DAMIAN  
BESTIA

BREAD LOUNGE  
HAND-MADE BREAD AND PASTRIES

WARNER MUSIC GROUP

E.R.B.

PIZZAN/STA!

TONY'S  
SALOON

AMP  
CORP

AFURI  
ramen + dumpling

ROW  
DTLA

BIKE SHED  
MOTO CO

HANK'S  
Organic

crafted  
KITCHEN

AvalonBay  
COMMUNITIES

off wine  
Brews

THE FACTORY  
KITCHEN

DOVER  
STREET  
MARKET

SOHO HOUSE

dōmi





arts district  
los angeles

# ADLA BID

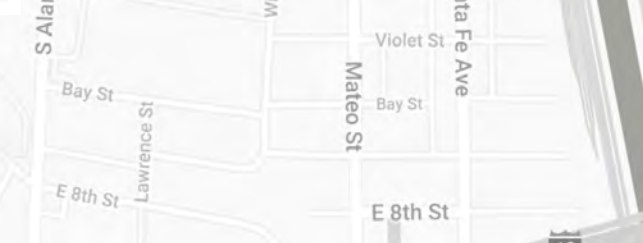
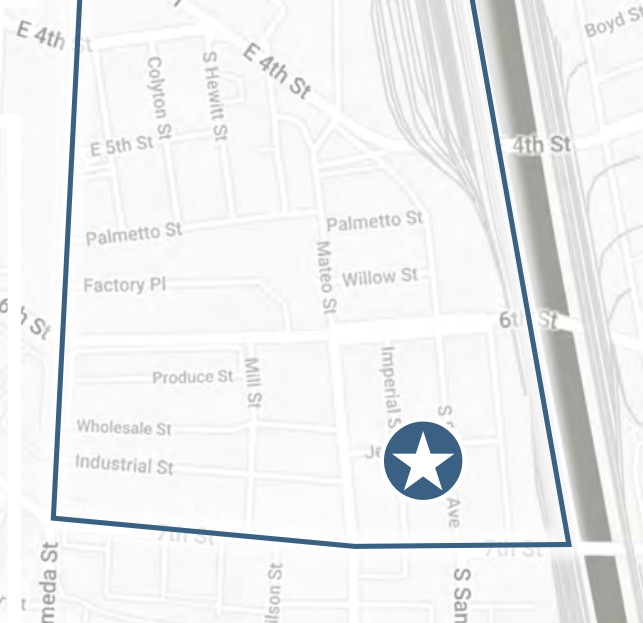
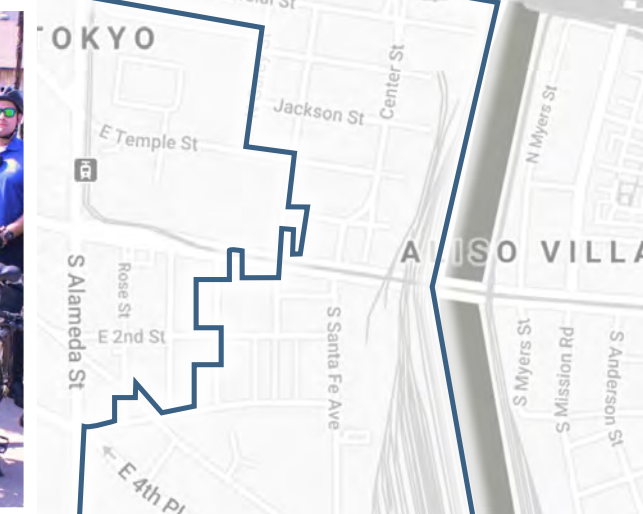
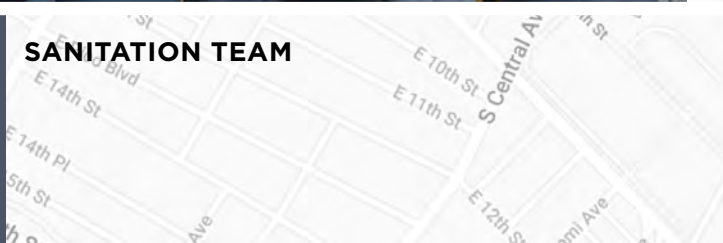
667 S Santa Fe Ave benefits from the services the ADLA provides. Arts District BID - The Arts District Los Angeles Business Improvement District (ADLA) is a formally recognized non-profit organization dedicated to ensure the neighborhood is clean, safe and ever improving. The efforts are funded by a special assessment paid by the property owners in the district. ADLA's full-time staff manages the day-to-day operations of ADLA's initiatives and programs.



**SECURITY TEAM**



**SANITATION TEAM**



BRANDON GILL

*Executive Director*

+1 213 629 6528

brandon.gill@cushwake.com

Lic 01262330

BRANDON BURNS

*Executive Director*

+1 213 629 6541

brandon.burns@cushwake.com

Lic 01194796

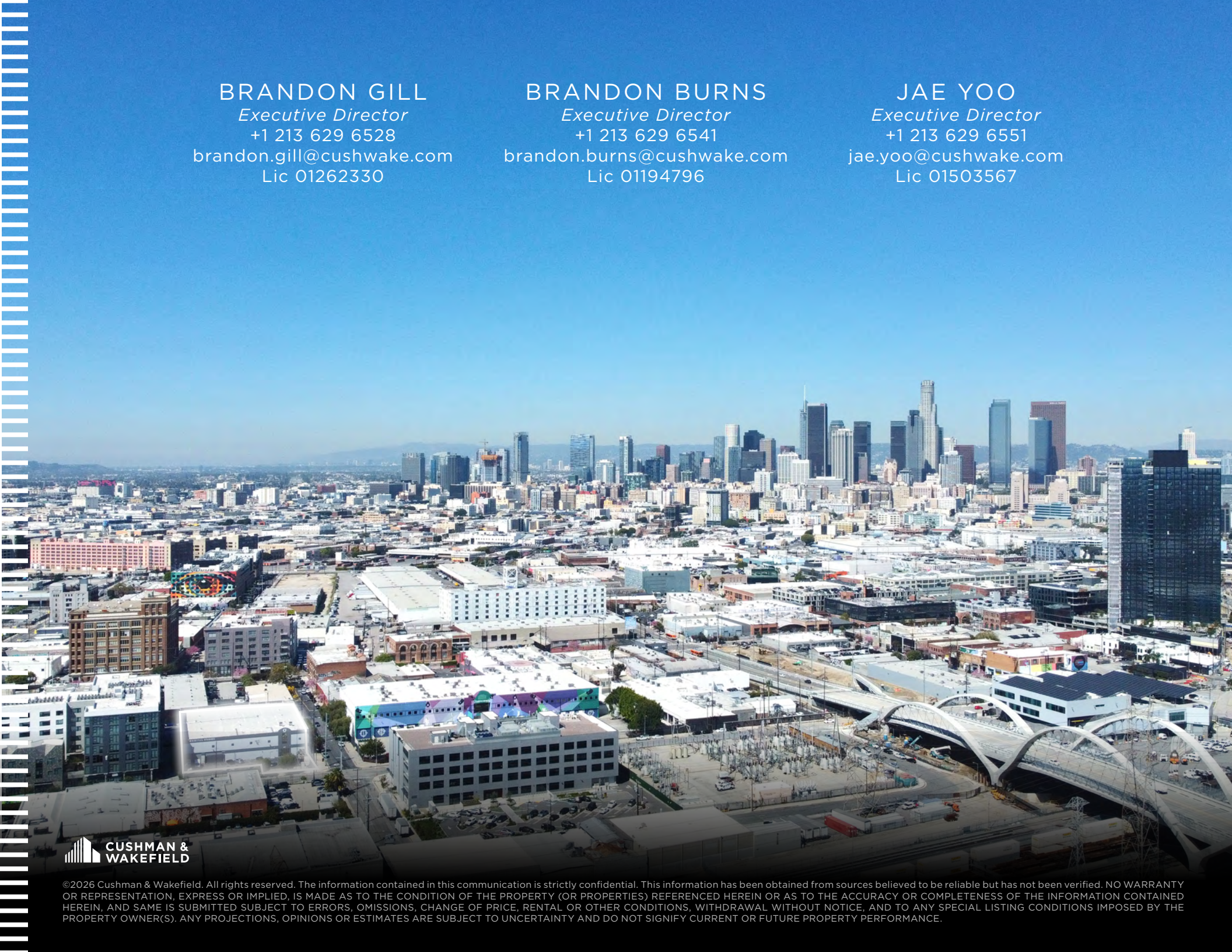
JAE YOO

*Executive Director*

+1 213 629 6551

jae.yoo@cushwake.com

Lic 01503567



©2026 Cushman & Wakefield. All rights reserved. The information contained in this communication is strictly confidential. This information has been obtained from sources believed to be reliable but has not been verified. NO WARRANTY OR REPRESENTATION, EXPRESS OR IMPLIED, IS MADE AS TO THE CONDITION OF THE PROPERTY (OR PROPERTIES) REFERENCED HEREIN OR AS TO THE ACCURACY OR COMPLETENESS OF THE INFORMATION CONTAINED HEREIN, AND SAME IS SUBMITTED SUBJECT TO ERRORS, OMISSIONS, CHANGE OF PRICE, RENTAL OR OTHER CONDITIONS, WITHDRAWAL WITHOUT NOTICE, AND TO ANY SPECIAL LISTING CONDITIONS IMPOSED BY THE PROPERTY OWNER(S). ANY PROJECTIONS, OPINIONS OR ESTIMATES ARE SUBJECT TO UNCERTAINTY AND DO NOT SIGNIFY CURRENT OR FUTURE PROPERTY PERFORMANCE.