



COMMERCIAL REAL ESTATE

OFFICE SPACES AVAILABLE!

We present to you the best place for your office: one of the best and most modern real estate properties ever, with a minimalist and modern interior design. Call us today to schedule your showing!



405-358-3311



2761 Washington Drive Suite #111
Norman, OK 73069



ichristian@roi-re.com
allison@roi-re.com

EXECUTIVE SUMMARY



PROPERTY OVERVIEW

The perfect opportunity to give your business a brand new, warm, and comfortable place to be. You, Your team, your clients and guests will be happy and productive. This office and office park are well designed to accommodate today's business needs. Office has a welcoming lobby, open break-room, large conference room, plenty of storage, spacious private offices, and a nice open area for that open office concept.

PROPERTY HIGHLIGHTS

Franklin Business Park is just south of Franklin Road on Flood Avenue. Easy access to and visibility to I-35.

Isaac Christian
ichristian@roi-re.com
405-358-3311

Allison Reeves
allison@roi-re.com
405-358-3311

*owner is licensed



AVAILABLE SPACE

Space	Space Size	Lease Rate	Available
2921 Adams Road			
Suite 121	2,807 SF	\$24.00 SF/Yr NNN	NOW
Suite 131	3,970 SF	\$24.00 SF/Yr NNN	NOW
4251 Adams Road			
Suite 101	2,711 SF	\$18.00 SF/Yr NNN	NOW
Suite 111	2,711 SF	\$18.00 SF/Yr NNN	NOW
2800 Washington			
Suite 101	2,558 SF	\$22.00 SF/Yr NNN	NOW

Isaac Christian
ichristian@roi-re.com
405-358-3311

Allison Reeves
allison@roi-re.com
405-358-3311

*owner is licensed



AVAILABLE SPACE

Space	Space Size	Lease Rate	Available
2760 Washington			
Suite 110	2,737 SF	\$20.00 SF/Yr NNN	NOW
2761 Washington			
Suite 101	4,068 SF	\$20.00 SF/Yr NNN	NOW
2900 Adams			
Suite 120	1,339 SF	\$22.00/SF/Yr NNN	NOW

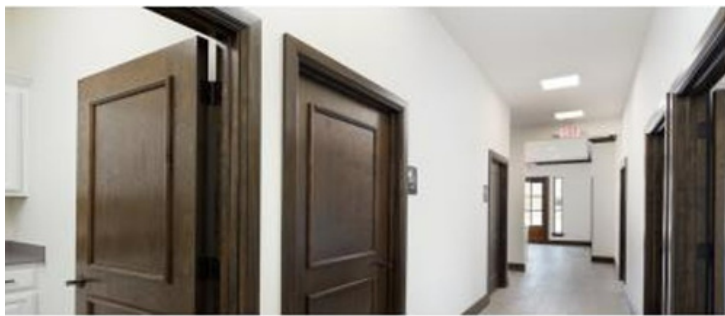
Isaac Christian
ichristian@roi-re.com
405-358-3311

Allison Reeves
allison@roi-re.com
405-358-3311

*owner is licensed



ADDITIONAL PHOTOS



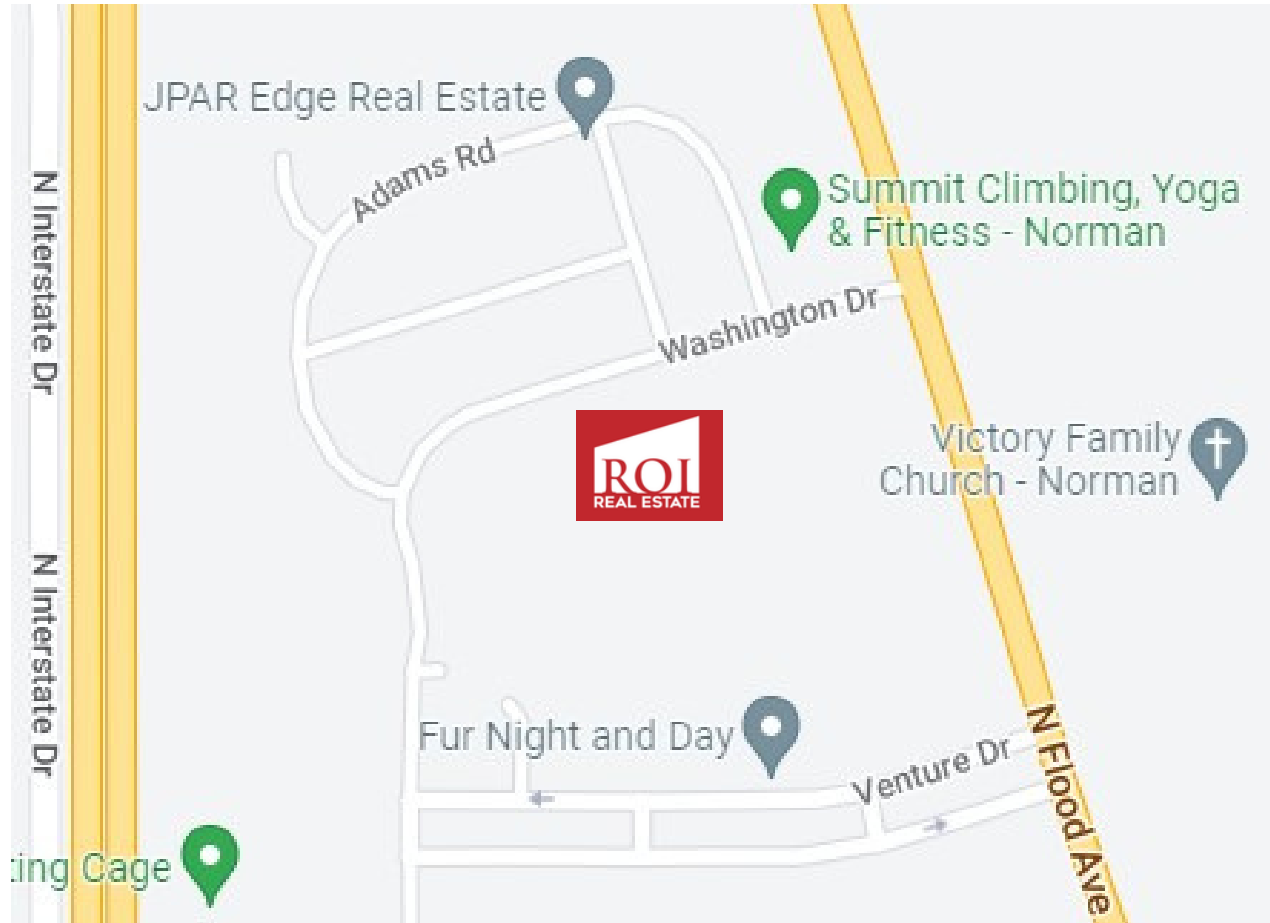
Isaac Christian
ichristian@roi-re.com
405-358-3311

Allison Reeves
allison@roi-re.com
405-358-3311

*owner is licensed



LOCATION MAP



Isaac Christian
ichristian@roi-re.com
405-358-3311

Allison Reeves
allison@roi-re.com
405-358-3311

*owner is licensed

