



# 221

## S Franklin Rd

### For Lease – Building B

- (1) 128,000 SF – Suite 400
- (1) 128,000 SF – Suite 500

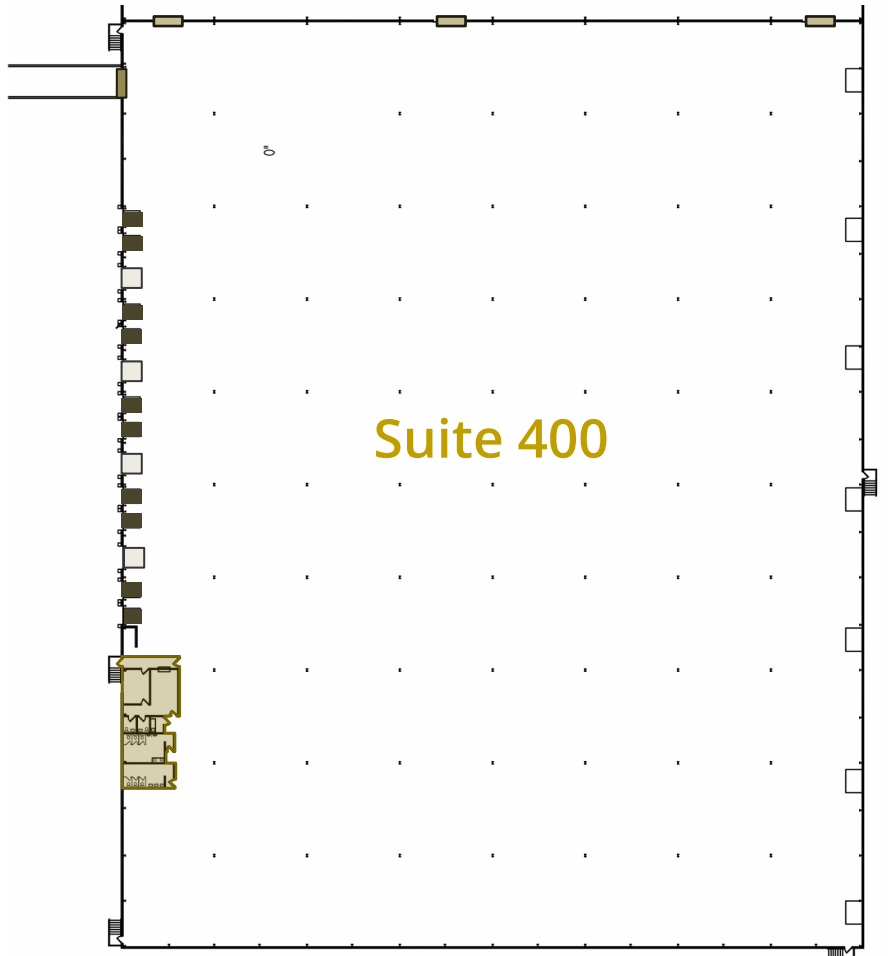
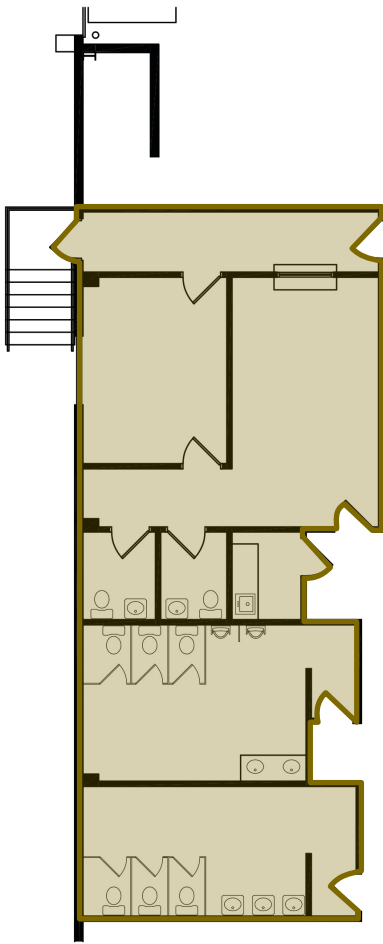
- Suite 400: 128,000 SF with 1,270 SF office
  - 14 docks | 1 drive-in
  - Available Now
- Suite 500: 128,000 SF with 1,755 SF office
  - 14 docks | 1 drive-in
  - Available 7/1/26
- 24' clear height
- 40' x 40' column spacing
- ESFR fire protection
- Heavy Power
- Zoned I-3
- All city utilities
- Less than 1 mile to I-465
- \$1.81 Operating Expenses for 2026

Tony Hupp  
+1 317 713 2116  
[tony.hupp@colliers.com](mailto:tony.hupp@colliers.com)

Mike Lubbers SIOR  
+1 317 713 2176  
[mike.lubbers@colliers.com](mailto:mike.lubbers@colliers.com)



# Unit 400

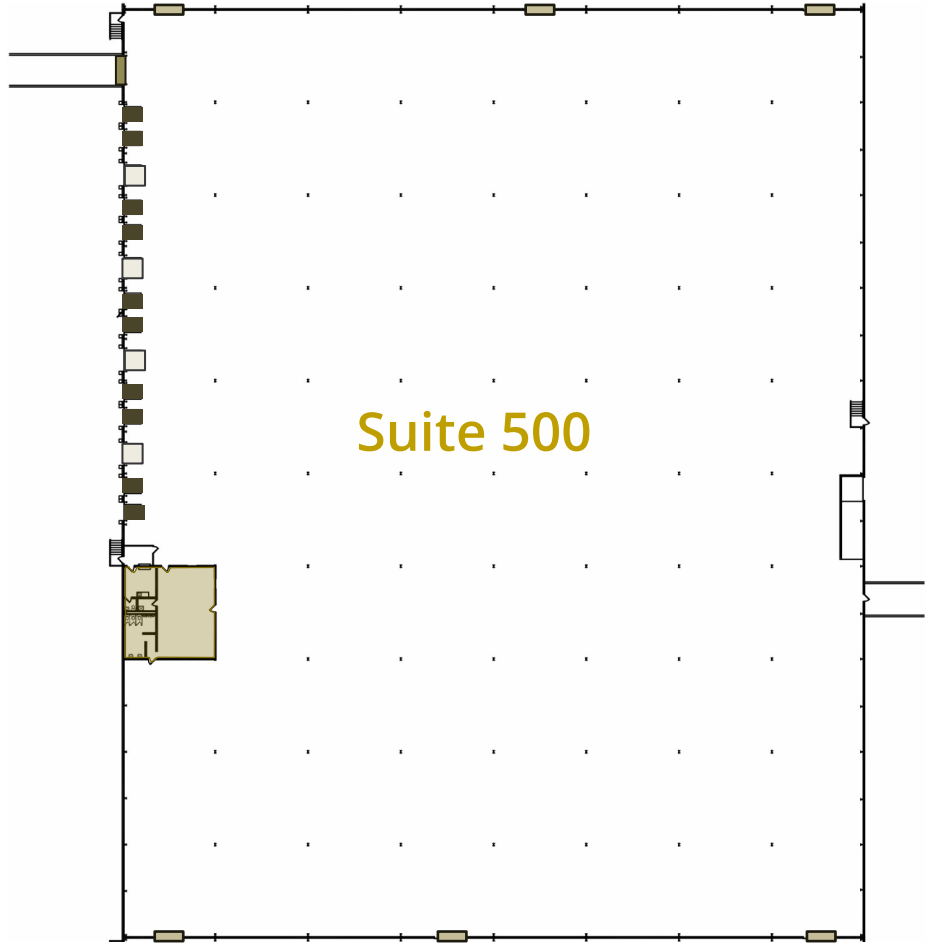
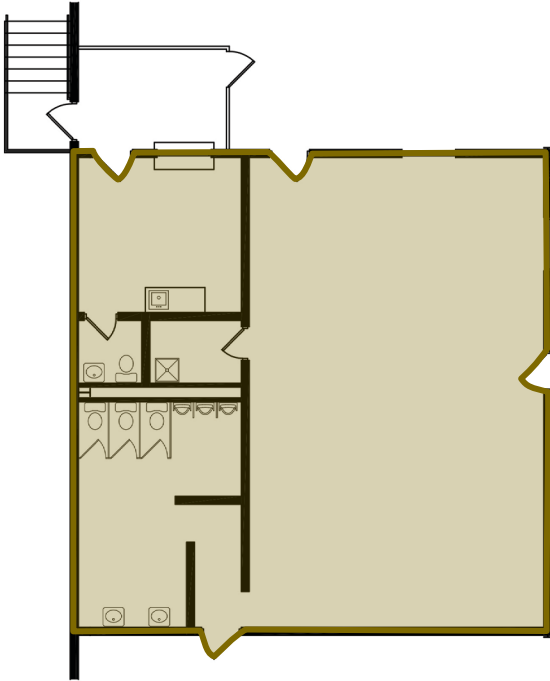


## Suite 400 Specifications

Total SF	± 128,000 SF
Office	1,270 SF
Clear Height	24'
Loading	(10) 8'W x 10'H Dock doors (4) 10'W x 10'H Dock doors (1) 12'W x 14'H Drive-in door (3) Interior Roll-up Coiling Doors
Electrical	Ample Power
Lease Rate:	\$4.95 / SF NNN
Operating Expenses:	\$1.81 (for 2026)

-  Dock Over Head Doors
-  Dock Over Head Doors
-  Drive-in Over Head Doors
-  Interior Roll-up Coiling Doors

# Unit 500



## Suite 500 Specifications

Total SF	± 128,000 SF
Office	1,755 SF
Clear Height	24'
Loading	(10) 8'W x 10'H Dock doors (4) 10'W x 10'H Dock doors (1) 12'W x 14'H Drive-in door (6) Interior Roll-up Coiling Doors
Electrical	Ample Power
Lease Rate:	\$4.95 / SF NNN
Operating Expenses:	\$1.81 (for 2026)

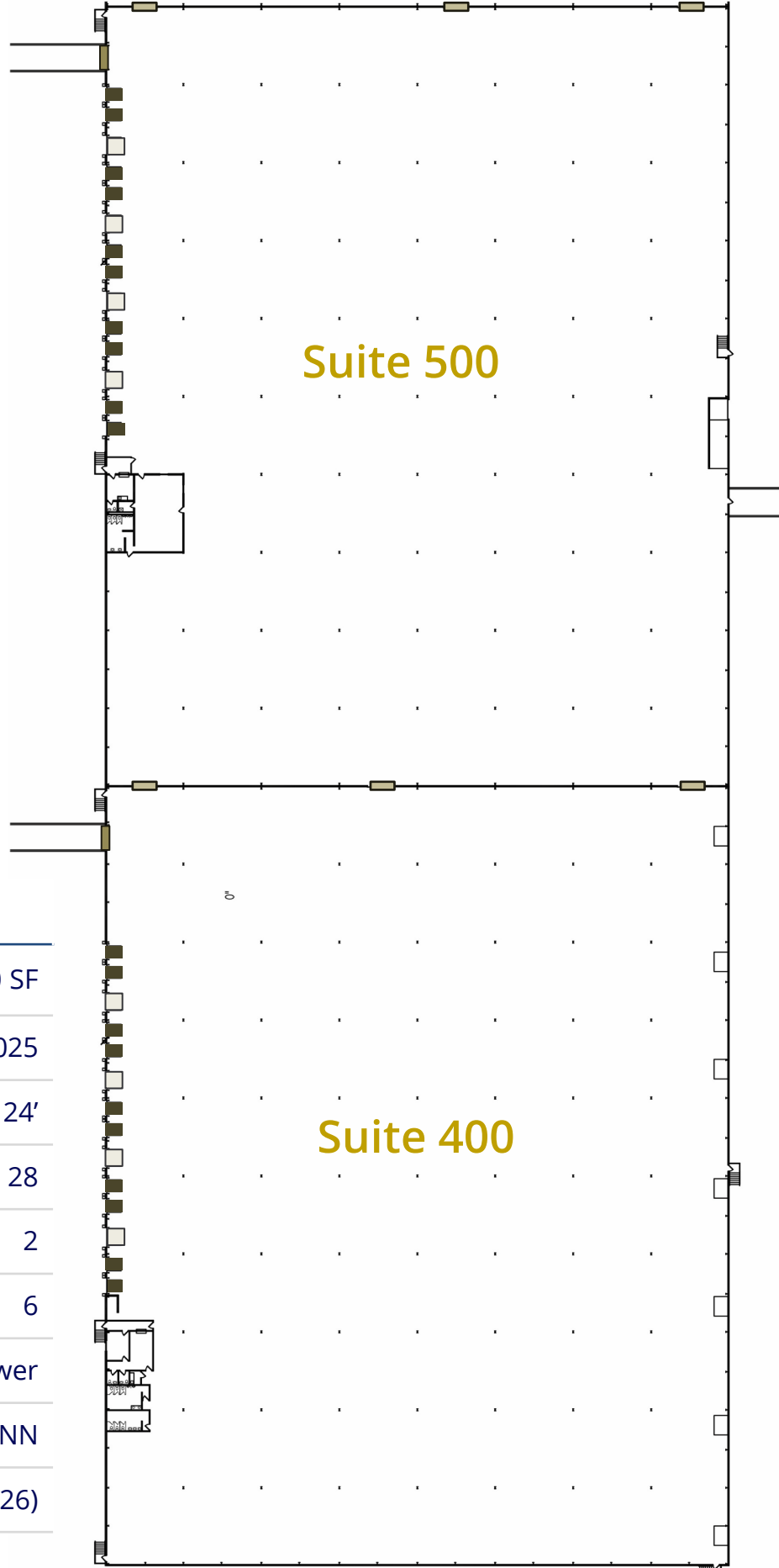
-  Dock Over Head Doors
-  Dock Over Head Doors
-  Drive-in Over Head Doors
-  Interior Roll-up Coiling Doors

# Units 400 + 500

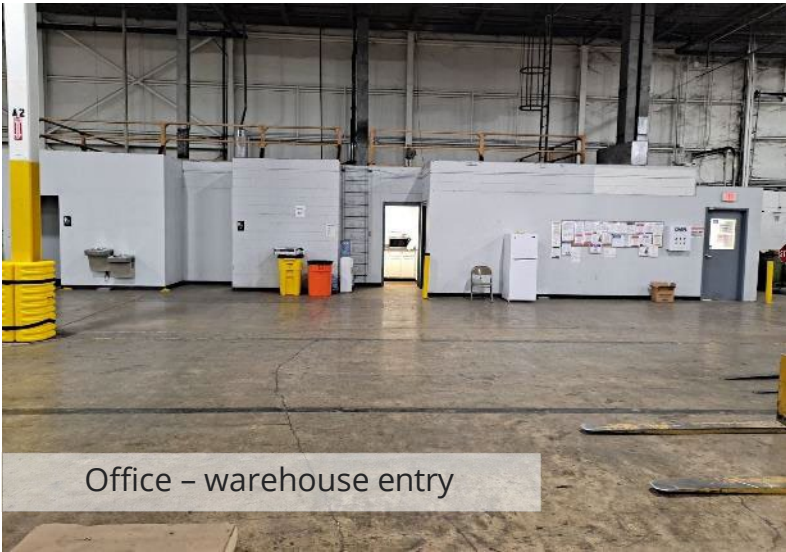
-  (20) 8'W x 10'H  
Dock Over Head Doors
-  (8) 10'W x 10'H  
Dock Over Head Doors
-  (2) 12'W x 14'H  
Drive-in Over Head Doors
-  (6) 12'W x 14'H  
Interior Roll-up Coiling Doors

## Suite 400 + 500 Specifications

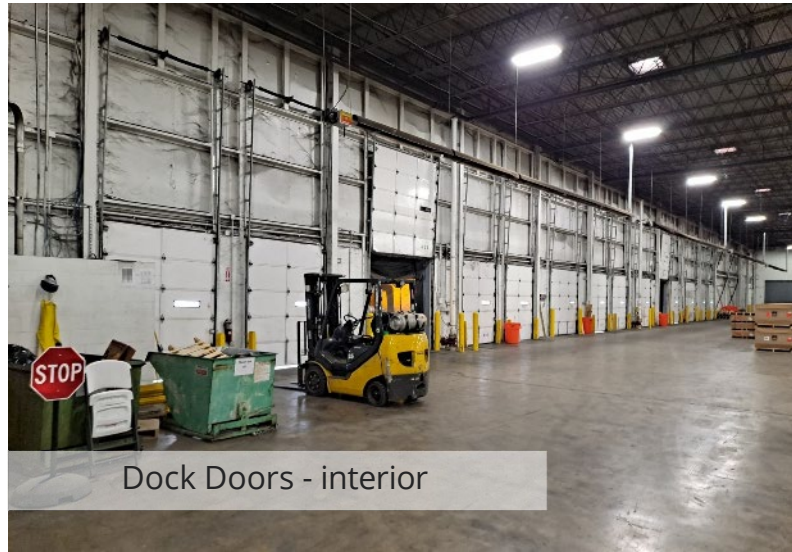
Total SF	± 256,000 SF
Office	3,025
Clear Height	24'
Docks	28
Drive-ins	2
Interior Roll-up Doors	6
Electrical	Ample Power
Lease Rate:	\$4.75 / SF NNN
Operating Expenses:	\$1.81 (for 2026)



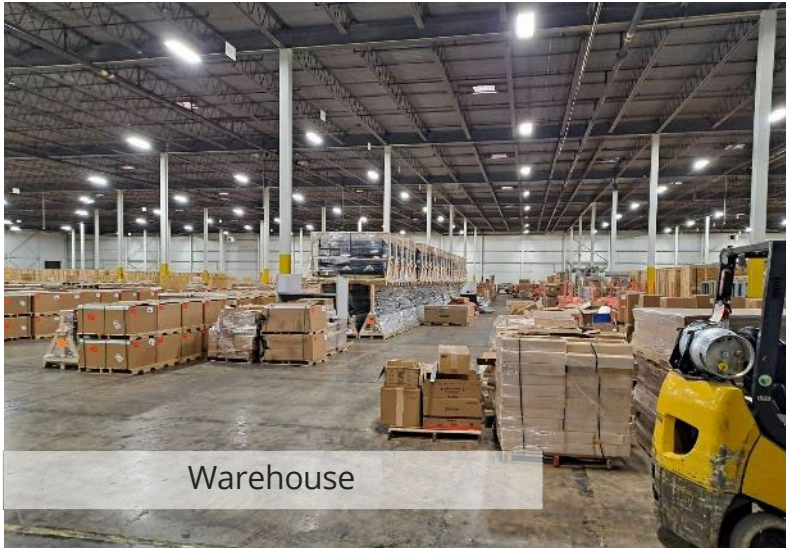
# The Interior Space



Office - warehouse entry



Dock Doors - interior



Warehouse



Warehouse

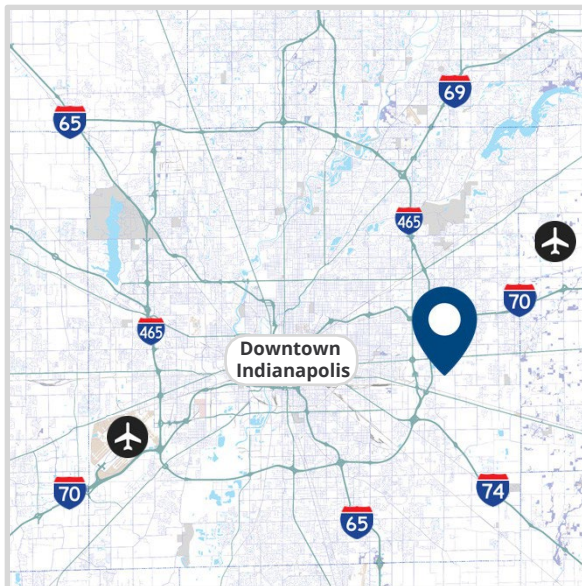
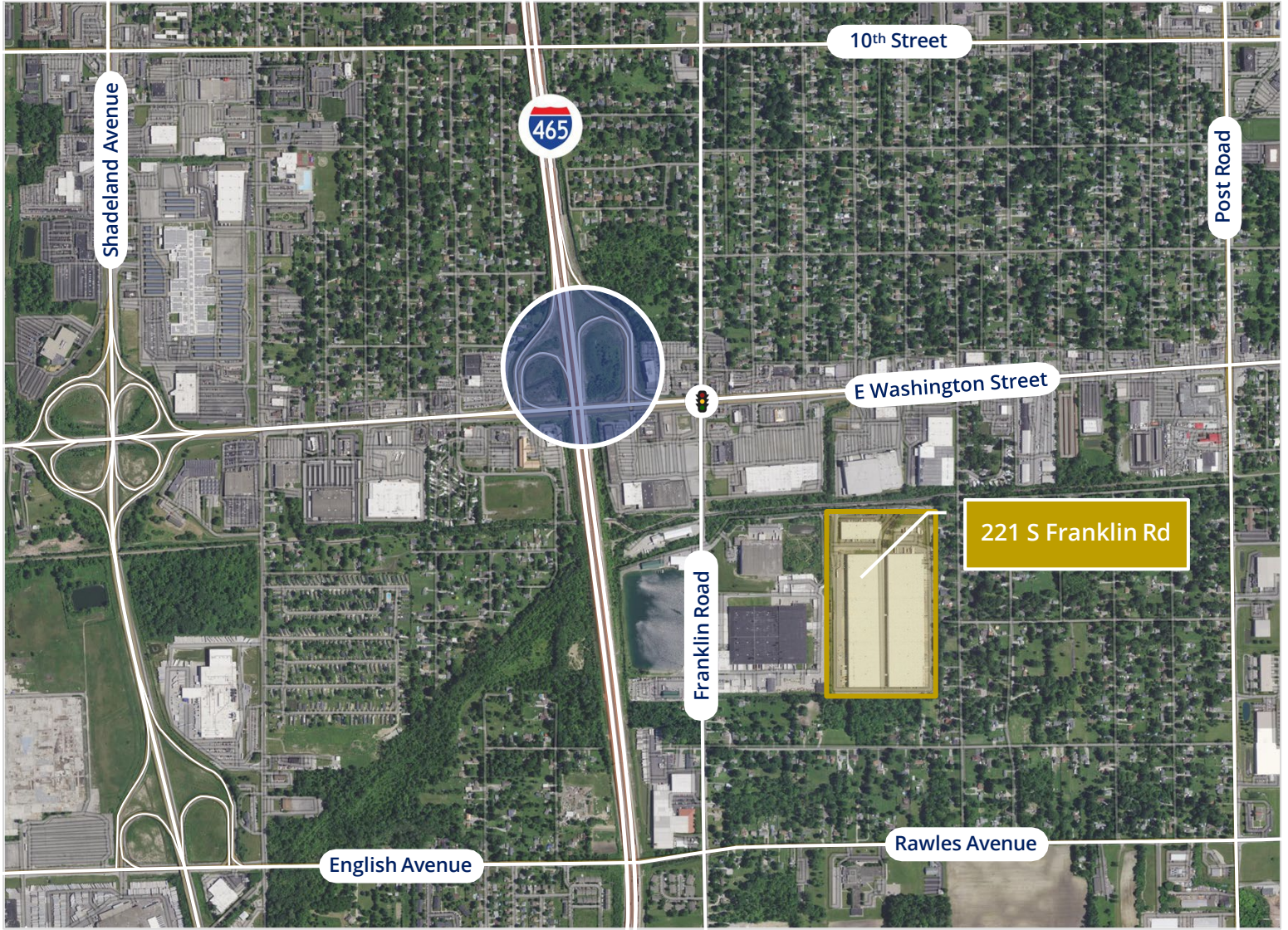


Warehouse - restroom



Warehouse

# The Location



## Local Connectivity

	Miles	Drive Time
I - 465	0.7	1 min
I - 70 East	2.5	5 min
I - 74 East	3.9	7 min
I - 65 South	8.5	16 min
I - 69 North	9.6	13 min
Downtown Indy	7.0	18 min
Indianapolis Intl. Airport	22.3	29 min

Tony Hupp  
 +1 317 713 2116  
[tony.hupp@colliers.com](mailto:tony.hupp@colliers.com)

Mike Lubbers SIOR  
 +1 317 713 2176  
[mike.lubbers@colliers.com](mailto:mike.lubbers@colliers.com)

