

Property For Lease

# 9-11 Bond Street

Great Neck, NY 11021



 **Douglas Elliman**  
Commercial

 **THE ROZITA SOOMEKH TEAM**  
at Douglas Elliman  
Real Estate

Rozita Soomekh- Results Powered by Rozita

Licensed Associate Real Estate Broker  
Douglas Elliman Commercial - Long Island  
516.344.7185  
rozita.soomekh@elliman.com

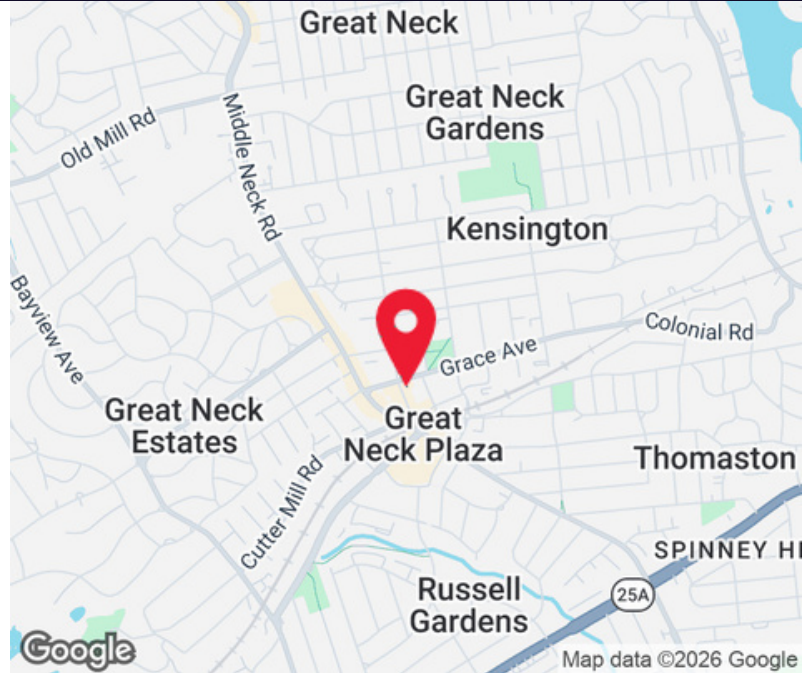
[WWW.ELLIMANCOMMERCIAL.COM](http://WWW.ELLIMANCOMMERCIAL.COM)

THE PROPERTY CONTAINED WITHIN THIS DOCUMENT IS BEING EXCLUSIVELY REPRESENTED BY DOUGLAS ELLIMAN REAL ESTATE COMMERCIAL DIVISION, 550 SMITHTOWN BYPASS STE. 117 SMITHTOWN, NY 11787 631.858.2405 ©2023 DOUGLAS ELLIMAN COMMERCIAL OFI,LLC. ALL MATERIAL PRESENTED HEREIN IS INTENDED FOR INFORMATION PURPOSES ONLY. WHILE THIS INFORMATION IS BELIEVED TO BE CORRECT, IT IS REPRESENTED SUBJECT TO ERRORS, OMISSIONS, CHANGES OR WITHDRAWAL WITHOUT NOTICE. ALL PROPERTY INFORMATION INCLUDING, BUT NOT LIMITED TO SQUARE FOOTAGE, ROOM COUNT, ZONING IN THE LISTING SHOULD BE VERIFIED BY YOUR OWN ATTORNEY, ARCHITECT OR ZONING EXPERT. IF YOUR PROPERTY IS CURRENTLY LISTED WITH ANOTHER REAL ESTATE BROKER, PLEASE DISREGARD THIS OFFER. IT IS NOT OUR INTENTION TO SOLICIT THE OFFERINGS OF OTHER REAL ESTATE BROKERS. WE COOPERATE WITH THEM FULLY. EQUAL HOUSING OPPORTUNITY.



# Retail Property For Lease

## 9-11 Bond Street Great Neck, NY 11021



Offering Summary	
Lease Rate:	\$10,500 per month (MG)
Available SF:	Approx. 1,600 SF + Basement

### Property Overview

Approx. 1,600 SF + Fully Finished Basement with Kitchen, \$ 10,500/ Monthly. Conveniently situated, the space is close to municipal parking, retail outlets, banks, restaurants, the post office, and more. It also enjoys proximity to public transportation, including the LIRR (20 minutes to Manhattan) and bus services, ensuring a high volume of foot and car traffic.

Don't miss the opportunity to establish your presence in Great Neck's thriving commercial scene. Inquire about leasing this space today.

### Property Highlights

- Located in-line with other retail
- Central Air and Heating
- Drop Ceilings
- Exposed Ceilings
- After Hours HVAC Available

For More Information:

**Rozita Soomekh- Results Powered by Rozita**

Licensed Associate Real Estate Broker  
 Douglas Elliman Commercial - Long Island  
 516.344.7185  
 rozita.soomekh@elliman.com

[Click for Agent Profile](#)

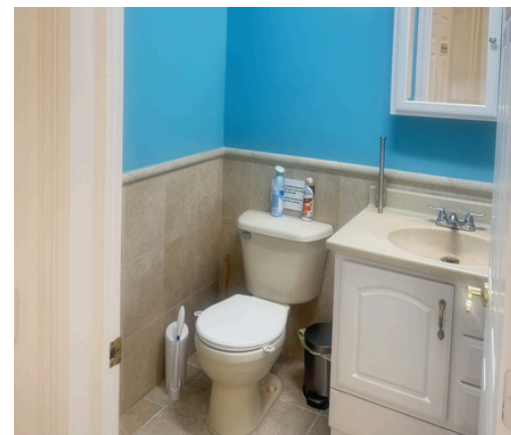
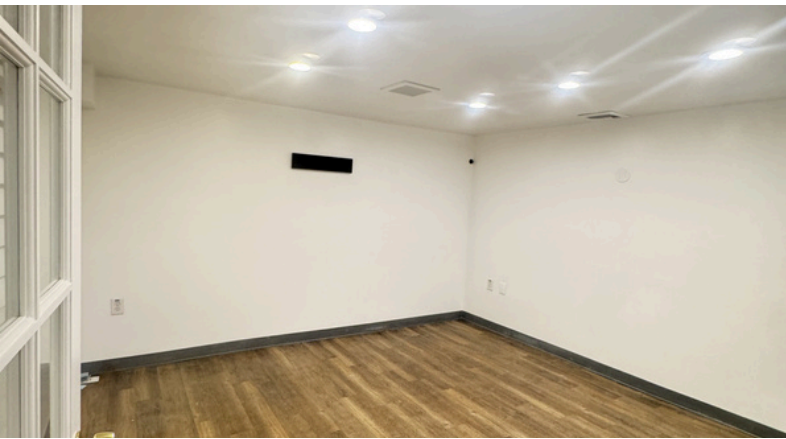


[WWW.ELLIMANCOMMERCIAL.COM](http://WWW.ELLIMANCOMMERCIAL.COM)



# Retail Property For Lease

9-11 Bond Street Great Neck, NY 11021



For More Information:

[Rozita Soomekh- Results Powered by Rozita](#)

Licensed Associate Real Estate Broker

Douglas Elliman Commercial - Long Island

516.344.7185

[rozita.soomekh@elliman.com](mailto:rozita.soomekh@elliman.com)

[Click for Agent Profile](#)

Douglas Elliman  
Commercial

THE ROZITA SOOMEKH TEAM

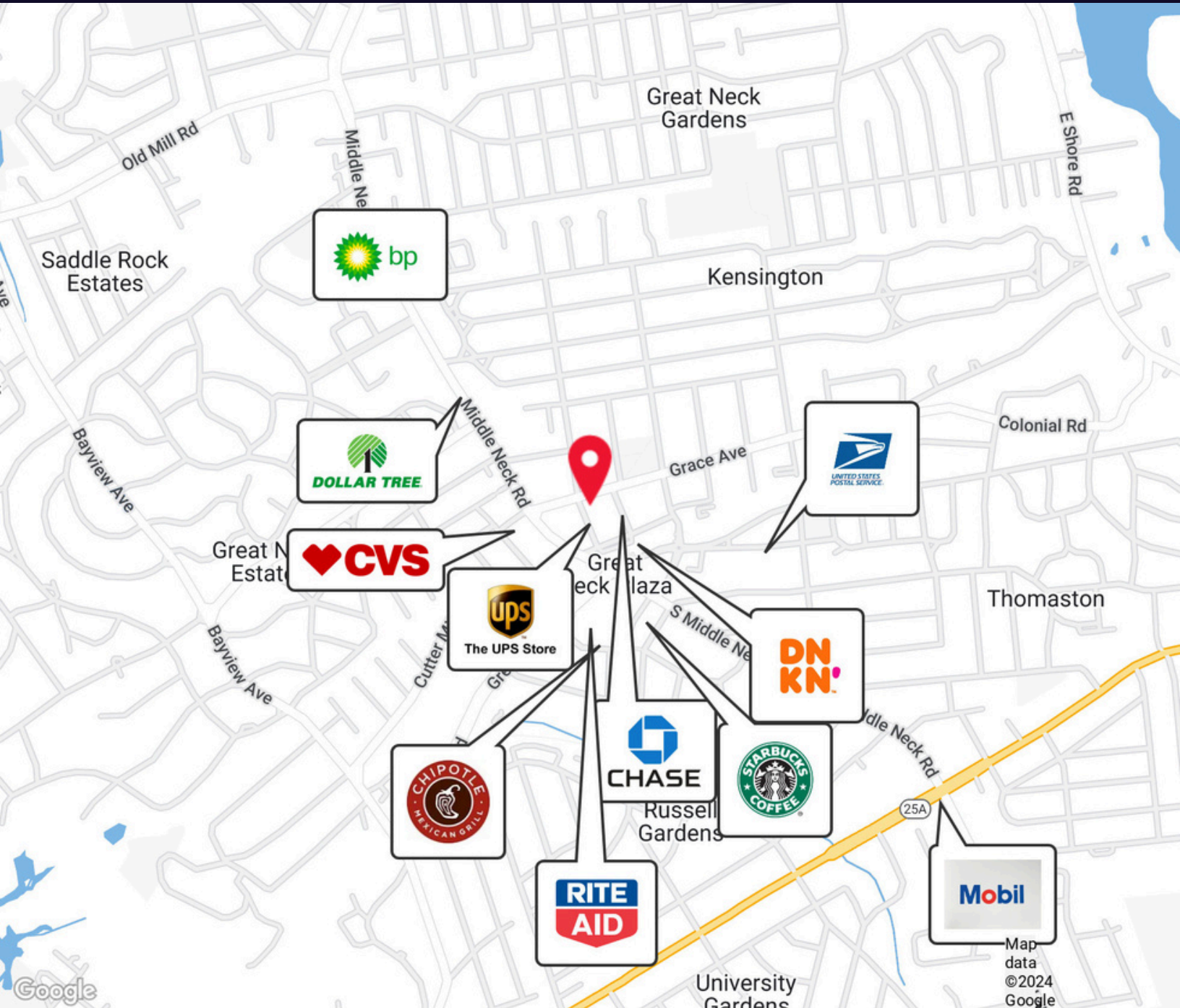
[WWW.ELLIMANCOMMERCIAL.COM](http://WWW.ELLIMANCOMMERCIAL.COM)

THE PROPERTY CONTAINED WITHIN THIS DOCUMENT IS BEING EXCLUSIVELY REPRESENTED BY DOUGLAS ELLIMAN REAL ESTATE COMMERCIAL DIVISION, 550 SMITHTOWN BYPASS STE. 117 SMITHTOWN, NY 11787631.858.24052022DOUGLASELLIMANCOMMERCIALOR,LLC.ALLMATERIALPRESENTED HEREIN IS INTENDED FOR INFORMATION PURPOSES ONLY. WHILE THIS INFORMATION IS BELIEVED TO BE CORRECT, IT IS REPRESENTED SUBJECT TO ERRORS, OMISSIONS, CHANGES OR WITHDRAWAL WITHOUT NOTICE.ALLPROPERTYINFORMATION,INCLUDINGBUTNOTLIMITEDTOSQUAREFOOTAGE,



# Retail Property For Lease

9-11 Bond Street Great Neck, NY 11021



For More Information:

[Rozita Soomekh - Results Powered by Rozita](#)

Licensed Associate Real Estate Broker  
Douglas Elliman Commercial - Long Island  
516.344.7185  
rozita.soomekh@elliman.com

[Click for Agent Profile](#)

Douglas Elliman  
Commercial

THE ROZITA  
SOOMEKH  
TEAM

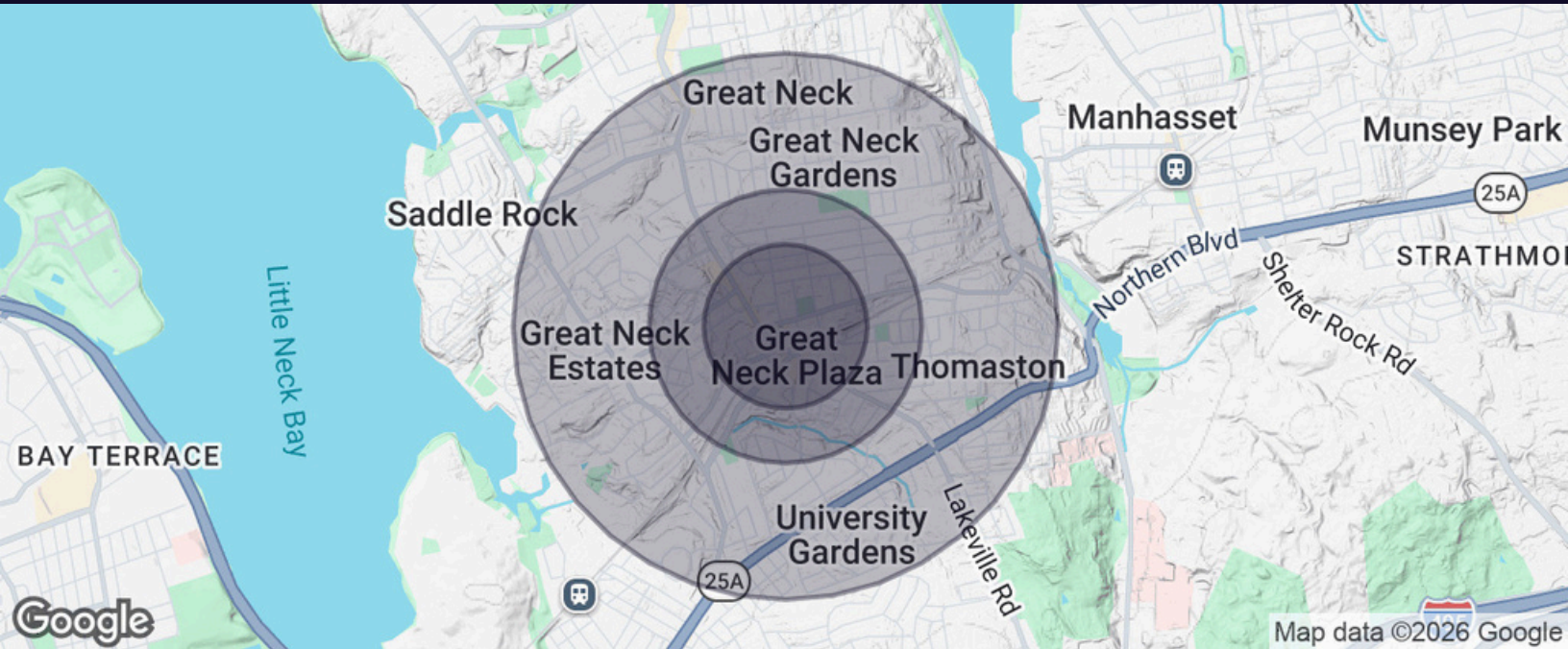
[WWW.ELLIMANCOMMERCIAL.COM](http://WWW.ELLIMANCOMMERCIAL.COM)

THE PROPERTY CONTAINED WITHIN THIS DOCUMENT IS BEING EXCLUSIVELY REPRESENTED BY DOUGLAS ELLIMAN REAL ESTATE COMMERCIAL DIVISION, 550 SMITHTOWN BYPASS STE. 117 SMITHTOWN, NY 11787631.858.2405202202 DOUGLAS ELLIMAN COMMERCIAL O.F.I.L.L.C. ALL MATERIAL PRESENTED HEREIN IS INTENDED FOR INFORMATION PURPOSES ONLY. WHILE THIS INFORMATION IS BELIEVED TO BE CORRECT, IT IS REPRESENTED SUBJECT TO ERRORS, OMISSIONS, CHANGES OR WITHDRAWAL WITHOUT NOTICE. ALL PROPERTY INFORMATION, INCLUDING BUT NOT LIMITED TO SQUARE FOOTAGE,



# Retail Property For Lease

## 9-11 Bond Street Great Neck, NY 11021



Population	0.3 Miles	0.5 Miles	1 Mile
Total Population	4,942	9,584	24,223
Average Age	48.1	47.5	46.0
Average Age (Male)	48.8	48.3	45.6
Average Age (Female)	46.9	46.5	45.7

Households & Income	0.3 Miles	0.5 Miles	1 Mile
Total Households	2,501	4,450	9,714
# of Persons per HH	2.0	2.2	2.5
Average HH Income	\$153,348	\$170,650	\$194,919
Average House Value	\$556,522	\$692,247	\$914,639

For More Information:

[Rozita Soomekh - Results Powered by Rozita](#)

Licensed Associate Real Estate Broker  
Douglas Elliman Commercial - Long Island  
516.344.7185  
rozita.soomekh@elliman.com

[Click for Agent Profile](#)

Douglas Elliman  
Commercial



[WWW.ELLIMANCOMMERCIAL.COM](http://WWW.ELLIMANCOMMERCIAL.COM)

THE PROPERTY CONTAINED WITHIN THIS DOCUMENT IS BEING EXCLUSIVELY REPRESENTED BY DOUGLAS ELLIMAN REAL ESTATE COMMERCIAL DIVISION, 550 SMITHTOWN BYPASS STE. 117 SMITHTOWN, NY 11787631.858.2405202220 DOUGLAS ELLIMAN COMMERCIAL O.P.L.L.C. ALL MATERIAL PRESENTED HEREIN IS INTENDED FOR INFORMATION PURPOSES ONLY. WHILE THIS INFORMATION IS BELIEVED TO BE CORRECT, IT IS REPRESENTED SUBJECT TO ERRORS, OMISSIONS, CHANGES OR WITHDRAWAL WITHOUT NOTICE. ALL PROPERTY INFORMATION INCLUDING BUT NOT LIMITED TO SQUARE FOOTAGE.



# Retail Property For Lease

## 9-11 Bond Street Great Neck, NY 11021



### Rozita Soomekh- Results Powered By Rozita

Licensed Associate Real Estate Broker

rozita.soomekh@elliman.com

Direct: 516.344.7185 | Cell: 516.344.7185

### Professional Background

Rozita Soomekh

Top Commercial Real Estate Agent | Douglas Elliman

With over two decades of success in the real estate industry, Rozita Soomekh has built a reputation as one of the leading commercial real estate professionals in New York. Since 2000, Rozita has been providing exceptional service to a diverse range of clients, including individual investors, developers, large franchises, and well-established businesses.

Clients choose to work with Rozita for her comprehensive, full-service approach, integrity, extensive market knowledge, and tireless work ethic. Whether her clients are buying, selling, or investing in real estate, Rozita consistently delivers results that exceed expectations.

Her success is driven by a loyal base of repeat clients, many of whom are prominent developers and business leaders. Rozita has successfully marketed and sold commercial and residential properties across the five boroughs of New York, including Nassau, Queens, the Bronx, Manhattan, Brooklyn, and Suffolk.

In late 2018, Rozita expanded her business by forming The Rozita Soomekh Team, enabling her to better meet the growing demands of

her clientele. Under her leadership, the team has excelled in closing high-value transactions and building long-term client relationships.

Rozita's commitment to staying ahead of market trends and her dedication to providing clients with the best marketing strategies and negotiation tactics have earned her multiple awards and industry recognition.

At Douglas Elliman, Rozita is able to leverage the firm's vast resources and marketing capabilities to ensure her clients receive the highest level of service and the best possible outcomes. With a proven track record of success and a commitment to excellence, Rozita Soomekh continues to be a trusted name in commercial real estate.

#### Douglas Elliman Commercial - Long Island

550 Smithtown Bypass Suite 117

Smithtown, NY 11787

631.858.2405

For More Information:

### Rozita Soomekh- Results Powered by Rozita

Licensed Associate Real Estate Broker

Douglas Elliman Commercial - Long Island

516.344.7185

rozita.soomekh@elliman.com

[Click for Agent Profile](#)



WWW.ELLIMANCOMMERCIAL.COM