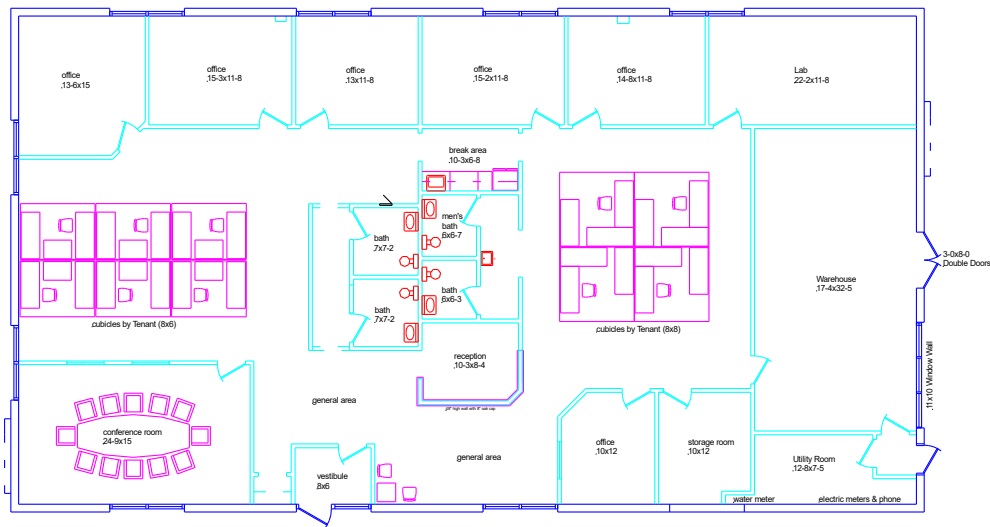


# FOR LEASE OFFICE/WAREHOUSE BUILDING

## 6801 Old Collamer Rd., East Syracuse



- 5,400 SQ. FT. OFFICE OR COMBINATION OF OFFICE/WAREHOUSE BUILDING
- DIVIDED INTO 2 SPACES: 2,400 & 3,000 SF (WITH O/H DOOR OPENING AND DOUBLE DOORS)
- GREAT LOCATION AT INTERSECTION OF OLD COLLAMER RD., EAST MOLLOY RD. & KINNE ST. IN E. SYRACUSE



6724 Thompson Road • Syracuse, NY 13211

For more info contact:  
 Ed Rogers  
 Phone: 315-463-8684  
 Cell: 315-427-8510  
 E-mail: [Ed@olivaco.com](mailto:Ed@olivaco.com)  
[www.olivaco.com](http://www.olivaco.com)

*All information is believed to be accurate. We are not responsible for misstatements of facts, errors or omissions, prior sales, and changes of price or withdrawal from the market without notice.*