



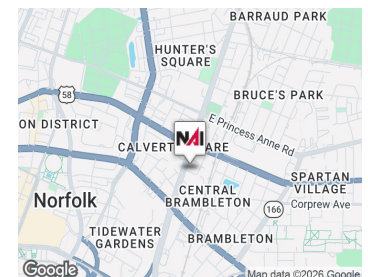
**Tidewater Drive Business Center**  
850 Tidewater Drive Norfolk, Virginia 23504

**Property Highlights**

- Modern open floor plan design
- Ample natural light throughout
- Secure access and 24/7 building security
- State-of-the-art HVAC and climate control systems
- On-site parking for tenants and visitors
- Accessible location with major roadways nearby
- Customizable office spaces to fit your needs
- Ideal space for administrative and service oriented business

**Amenities**

- Reserve Parking
- Monument Signage



**Offering Summary**

<b>Lease Rate:</b>	\$17 - 19 SF/yr (NNN; MG)
<b>Building Size:</b>	23,108 SF
<b>Available SF:</b>	1,680 - 3,360 SF
<b>Lot Size:</b>	1.6 Acres

**For More Information**

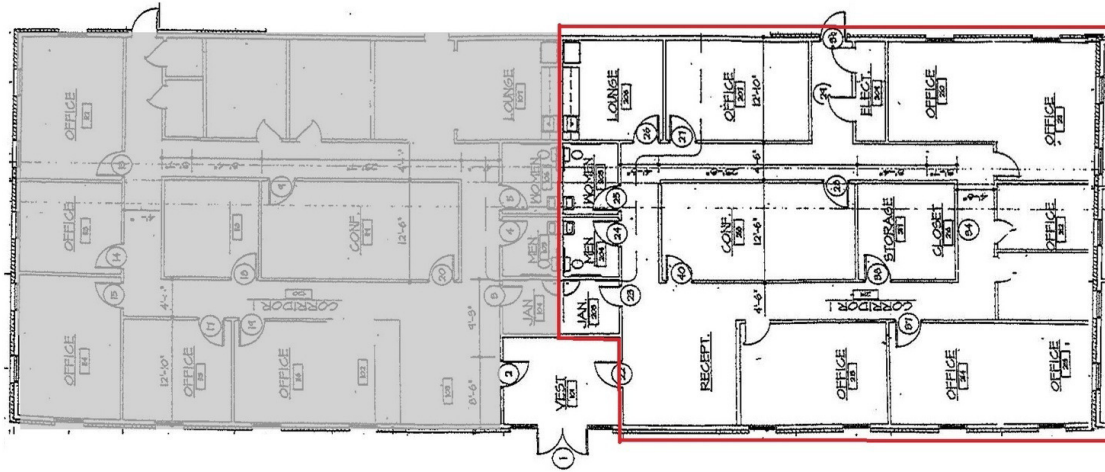
**Patrick L. Reynolds, CCIM, SIOR**

O: 757 216 8438  
patrickreynolds@naidominion.com

**FLYER**

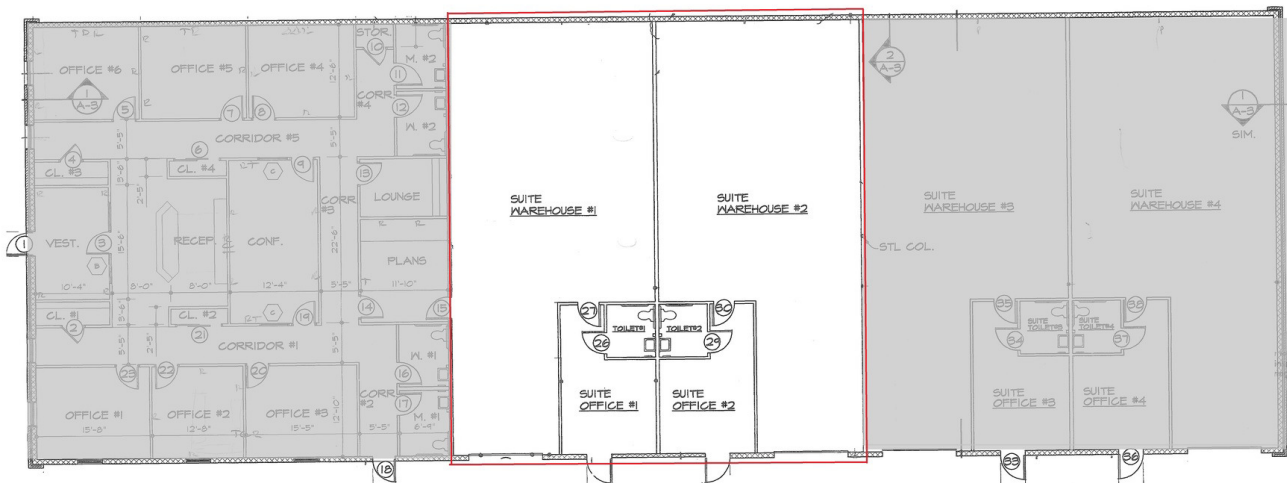
**850 Tidewater Drive, Norfolk, VA 23504**

We obtained the information above from sources we believe to be reliable. However, we have not verified its accuracy and make no guarantee, warranty or representation about it. It is submitted subject to the possibility of errors, omissions, change of price, rental or other conditions, prior sale, lease or financing, or withdrawal without notice. We include projections, opinions, assumptions or estimates for example only, and they may not represent current or future performance of the property. You and your tax and legal advisors should conduct your own investigation of the property and transaction.



850 TIDEWATER DRIVE  
SUITE A

850 TIDEWATER DRIVE  
SUITE B





**FLYER**

**850 Tidewater Drive, Norfolk, VA 23504**

We obtained the information above from sources we believe to be reliable. However, we have not verified its accuracy and make no guarantee, warranty or representation about it. It is submitted subject to the possibility of errors, omissions, change of price, rental or other conditions, prior sale, lease or financing, or withdrawal without notice. We include projections, opinions, assumptions or estimates for example only, and they may not represent current or future performance of the property. You and your tax and legal advisors should conduct your own investigation of the property and transaction.



Map data ©2026 Google Imagery ©2026 Airbus, Maxar Technologies

**FLYER**

**850 Tidewater Drive, Norfolk, VA 23504**

We obtained the information above from sources we believe to be reliable. However, we have not verified its accuracy and make no guarantee, warranty or representation about it. It is submitted subject to the possibility of errors, omissions, change of price, rental or other conditions, prior sale, lease or financing, or withdrawal without notice. We include projections, opinions, assumptions or estimates for example only, and they may not represent current or future performance of the property. You and your tax and legal advisors should conduct your own investigation of the property and transaction.