

FOR LEASE

# EAST LAUDERDALE WAREHOUSES

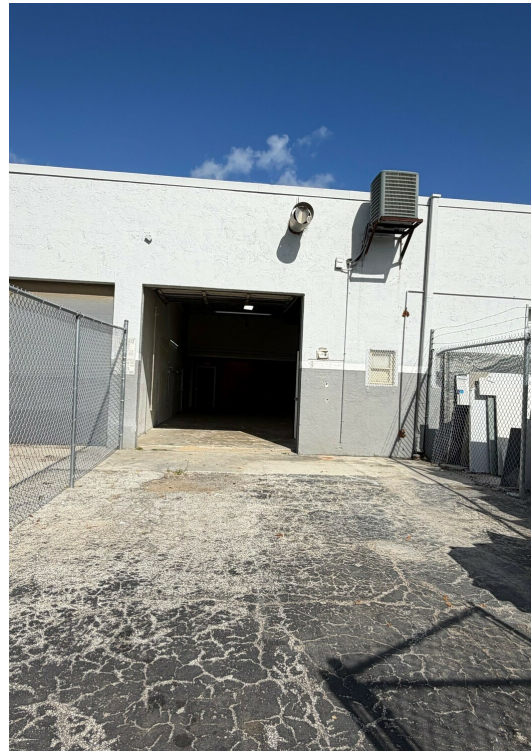
4760-4875 NE 12 AVE, OAKLAND PARK, FL 33334

4807 NE 12TH AVE



### SPACE HIGHLIGHTS

- 1,300 SF
- 100% Air-Conditioned Space
- 258 SF air-conditioned office
- Private fenced yard
- 10' x 10' grade level overhead door
- 14'2" clear ceiling
- Private restroom



### HALEY PRESSER

Property Manager / Sales Associate  
Direct: 954.485.9200 | Cell: 954.254.5396  
Haley@levyrai.com

### ANGIE WEAVER

Lauderdale Lakes and Lauderdale Manager  
Direct: 954.485.9200 | Cell: 917.645.2339  
angie@levyrai.com



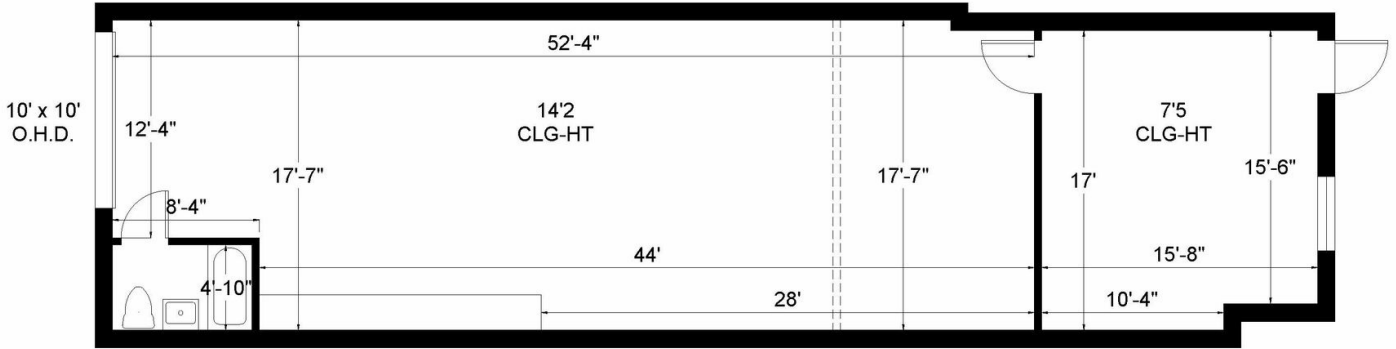
# EAST LAUDERDALE WAREHOUSES

4760-4875 NE 12 AVE, OAKLAND PARK, FL 33334

## 4807 NE 12TH AVE FLOOR PLAN

### EAST LAUDERDALE WAREHOUSES

4807 NE 12th Avenue, Oakland Park, FL 33334



Office - 258 Sq. Ft.  
Warehouse - 1,042 Sq. Ft.

Total area - 1,300 Sq. Ft.

#### HALEY PRESSER

Property Manager / Sales Associate  
Direct: 954.485.9200 | Cell: 954.254.5396  
Haley@levyrai.com

#### ANGIE WEAVER

Lauderdale Lakes and Lauderdale Manager  
Direct: 954.485.9200 | Cell: 917.645.2339  
angie@levyrai.com

