



Space Profile for

Unit: #001

Area: 935 sq ft

Address

4200 S. East Street, Suite 1

Indianapolis, IN 46227



400 N. Tampa St., Suite 2210

Tampa, FL, 33602

125 Half Mile Rd Suite
207 Red Bank, NJ
07701

Unit # 0001
Ground Floor
+/- 935 SF

Square footage shown was measured on-site and adheres to BOMA standards

Width
+/- 19'

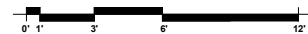
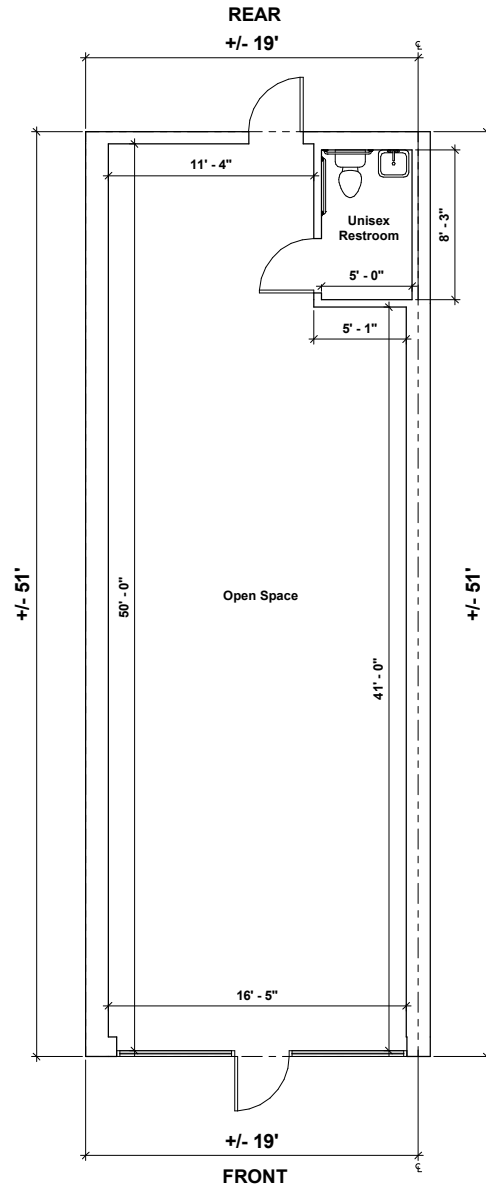
Depth
+/- 51'

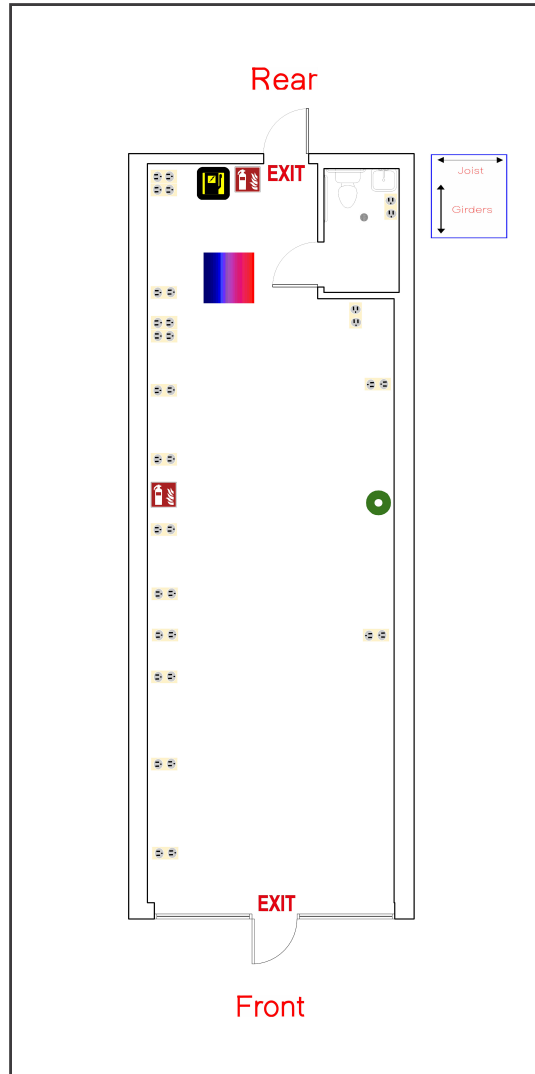
Revisions

Floor Plan
Prepared 1/10/23/2022
Unit # 0001

Plans Produced by:
ID PLANS

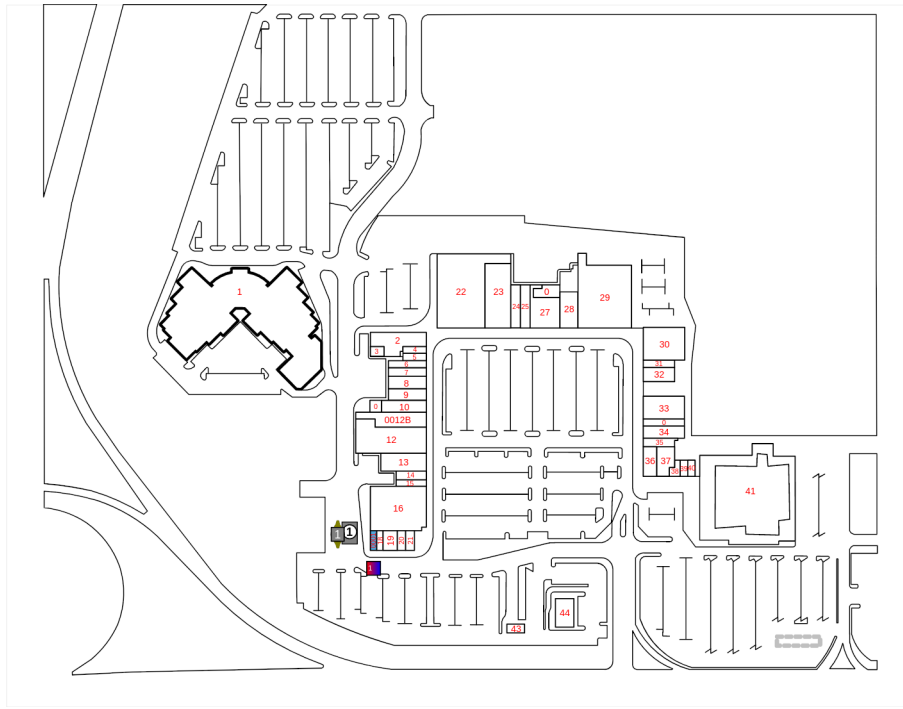
400 North Tampa St, Suite 2210
Tampa, FL 33602
Phone: (866) 657-2545
idplans.com





Legend

	Breaker Panel		Fire Extinguisher		Ceiling Fan w/ Light		Fire Sprinkler
	Circular Column		Fire Alarm Pulldown		Rectangular Column		Pocket Door
	Appliance Outlet		Glass Door		Refrigerator		Track Lighting
	Fire Alarm		Handicap Handrail		Roll-Up Door		2-Bulb Fluorescent Lighting
	Drinking Fountain		Roof Hatch		Sink		3-Bulb Fluorescent Lighting
	Door		HVAC Unit		Swing Door		4-Bulb Fluorescent Lighting
	Double Hung Door		Recessed Light		Toilet		Ceiling Air Vent
	Electrical Outlet		Staircase		Can Light		Air Diffuser
	Emergency Light		Water Heater		Urinal		Ceiling Fan w/o Light
	EXIT Light		Telephone Panel		Thermostat		Air Handler
	Tankless Water Heater		Window Wall Opening		RJ 45		Fire Alarm Control Panel
	Step Down Transformer		Maintenance Sink		Window		Tenant Water Meter
	Disconnect		Sub Water Meter		House Gas Meter		Sub Gas Meter
	House Water Meter		Air Handler		House Electric Meter		Tenant Electric Meter
	Tenant Gas Meter						
	Sub Electric Meter						



Space Overview

Overview	Actual Square Footage	Measured Depth of Space	Total Depth of Space	Has Stepdown Transformer
	935 SQFT	51' 0"	51' 0"	No

Thickness	Front Wall	Rear Wall	Left Wall	Right Wall
	1' 1"	0' 8"	1' 3"	1' 4"

Unit Overview	Sales Area	Stock Room	Exterior Doors	Other
				571 SQFT

Flooring	Concrete	Carpet	Tile	Other	Unit	Total
			233 SQFT		571 SQFT	935 SQFT

Ceiling Information	Height From Floor To Ceiling	Height From Floor To Bottom Of Deck	Height From Floor To Bottom Of Joist
	Front: 9' 9" Back: 9' 9"	Front: 15' 4" Back: 15' 4"	Front: 14' 3" Back: 14' 3"

Ceiling Information Cont.	Clear Ceiling Height	Height From Floor To Bottom Of Girder	Number Of Acoustical Tiles
	7' 10"		

Other Cont.	Phone Board Location	Mop Sink Location	Thermostat Location	Dmarc Distance	Are Interior Walls Full Height

Other Cont.	Hazardous Materials	Loading Dock	Are Demising Walls Full Height	Changes In Demising Wall Thickness
	No	No	No	No

Mechanical

HVAC	Reference	Manufacturer	Model	Serial	Tonnage	Year	Notes
	1	CARRIER	48TFE004-A-511--	3602G40449	3	2002	

Electric

Disconnect	Reference	Amps	Location	Panel Number	Manufacturer	Notes	Handle or Breaker
	1	100	Open Space	Not Listed	The Cleveland Switchboard Co.	.	Breaker

Service Panel	Reference	Amps	Service Type	Panel Type	Panel UL Number	Manufacturer	Location	Notes
	1	100	120/208	Not Listed	V582071	The Cleveland Switchboard Co.	Open Space	No panelboard label, only UL label.

Electric Meter	Reference	Meter #	Location	Meter Reading	Read On	Voltage	Notes
	1	1441631	Shared Hallway			Wed Nov 2 2022	

Plumbing

Water Heater	Reference	Manufacturer	Model	Serial	Gallons	Tankless	Water Line (in)	Location	Notes
	1	A.O. Smith	ELJF 6 917	GK02-1004627-917	6	No	.625	Above Restroom	.

Water Meter	Reference	Meter #	Location	Size	Notes
	1	75938558	Left Exterior	3/4 inch	

Waste

No assets available for this section.

Fire

Fire Extinguisher	Number of Fire Extinguishers	Notes
	2	

Gas

No assets available for this section.

Room

Restroom	Unit	Description
	Restroom 1	Unisex Restroom

Storefront 1

