



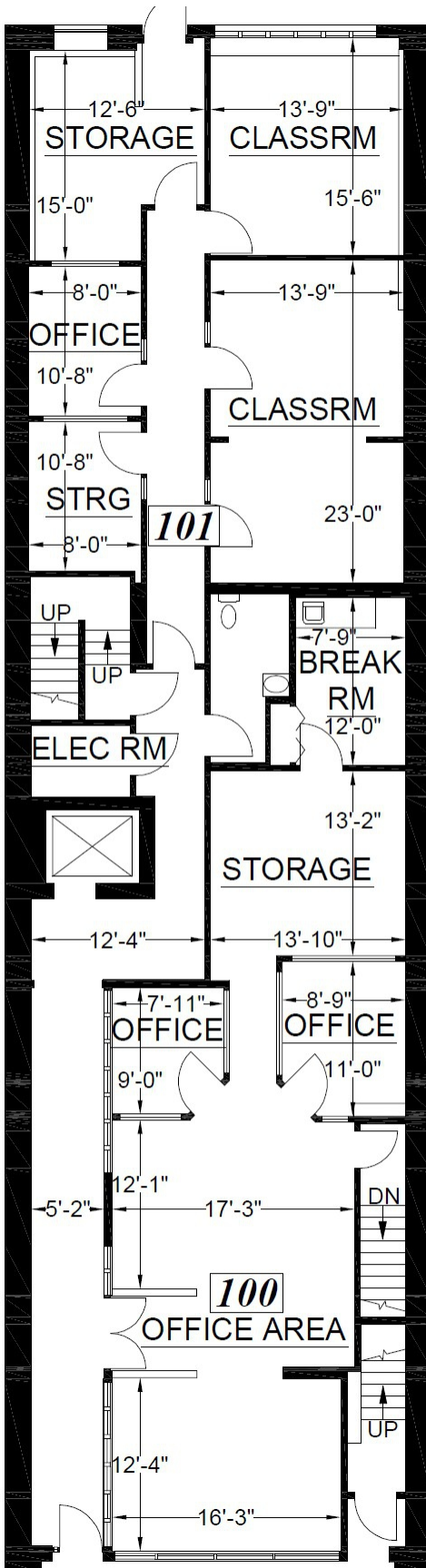
Downtown Office/Retail For Lease

100/101 - 754 BROUGHTON STREET
Victoria, British Columbia

- Up to 2,340 Square Feet
- Central Downtown Location
- Newer Finished Offices
- Available Soon

**PEMBERTON
HOLMES**
COMMERCIAL

100/101- 754 BROUGHTON STREET
VICTORIA, B.C.



Configuration slightly different from shown



Up to 2,340 square feet of main floor office space. Great central location, Close to public parking, Landlord will consider renting units separately Nicely finished improvements.

Net Rent: \$16.00
CAM/Tax: \$14.00 (est. 2026)
Square Feet: 2,340 sq.ft.
(1,168 sq.ft. + 1,172 sq.ft.)



Clive Townley
Pemberton Holmes - Commercial

d: (250) 405-6264
m: (250) 744-9114
clive@townley.ca