



FOR SUBLEASE

BENTONVILLE OFFICE

Property Highlights

- 1,975 SF available for Sublease
- \$18.25/MG
- Furniture can be included
- Sublease runs through 11/30/2026
- Abundant parking available
- Located near SAM'S Club HQ and Walmart Home Office
- Close proximity to I-49 & U.S. Highway-62

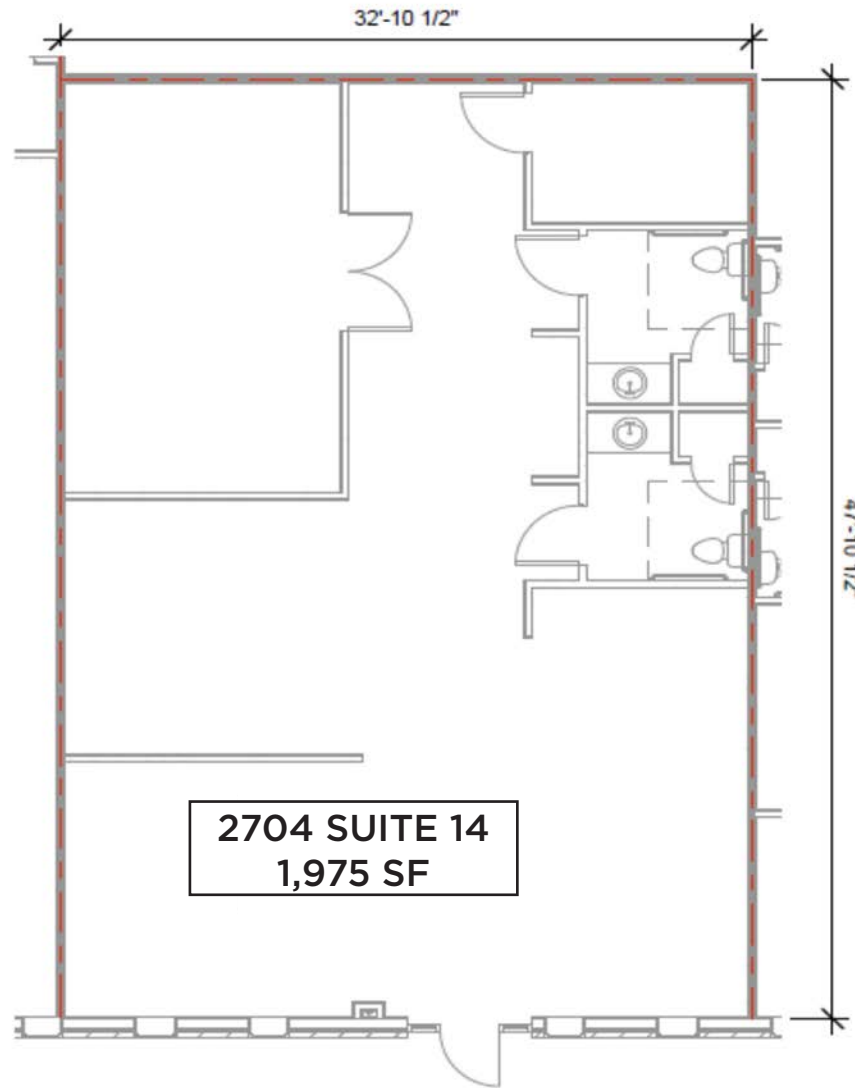
**For more information, please
contact:**

Ethan Fowler
501 590 6544
efowler@sagepartners.com

Sarah Kate Ellis
479 854 3030
sellis@sagepartners.com

479 845 3000
sagepartners.com

*information deemed reliable but not guaranteed



1 2704 SUITE 14
1/8" = 1'-0" ↓

2704

INTERIOR PHOTOS 2704 OTIS CORLEY DRIVE, STE 14 | BENTONVILLE, AR

