

# OAKLEY PLAZA

1200 Oakley Seaver Drive | Clermont, FL 34711

Retail & Office For Lease



LQ Commercial  
REAL ESTATE SERVICES

LQCRE.COM



CALL FOR  
RATES



1,167 - 9,082 SF  
SIZE



39,880 SF  
GLA

- 1,167 - 9,082 SF retail & office for lease in Clermont, FL
- Unit #105 - 1,167 SF retail available now
- Unit # 101 - 7,502 SF 2nd gen restaurant space coming available Dec 2026
- Unit # 206 - 212 - 9,082 SF 2nd floor office space coming available Aug 2026
- Area retailers include Home Depot, Publix, Home Goods, Lowes, Hobby Lobby, and more!
- Equipped with an elevator and ample parking
- Four points of ingress/egress with access from both Oakley Seaver Drive and SR-50
- Signalized corner with great visibility on Oakley Seaver Drive and heavily traveled SR-50 (51,500 CPD)
- Centrally located in Clermont's main retail corridor on SR-50, just east of US-27 (47,500 CPD)



[PROPERTIES.LQCRE.COM/OAKLEY-PLAZA](https://PROPERTIES.LQCRE.COM/OAKLEY-PLAZA)



5-MILE POPULATION  
**108,507**



5-MILE INCOME  
**\$120,798**



PROJECTED GROWTH  
**4.0%**

 **LQ Commercial**  
REAL ESTATE SERVICES  
500 Winderley Pl #104  
Maitland, FL 32751  
[LQCRE.COM](https://LQCRE.COM)

**Julia Sosa**  
Founding Principal - Orlando  
D: 407.775.4358  
C: 407.257.8246  
[jsosa@lqcre.com](mailto:jsosa@lqcre.com)

**Eva Royal**  
Principal, Senior Associate  
D: 407.705.2217  
C: 407.421.3532  
[eroyal@lqcre.com](mailto:eroyal@lqcre.com)

# OAKLEY PLAZA

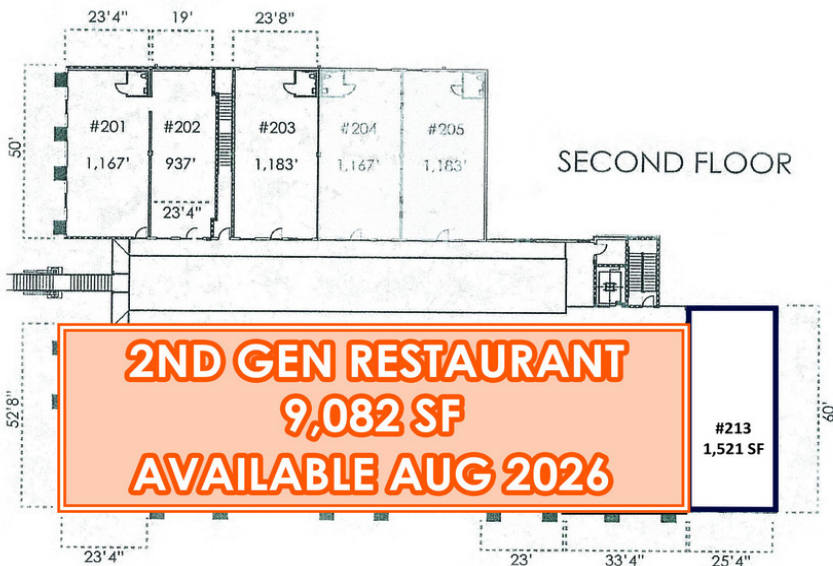
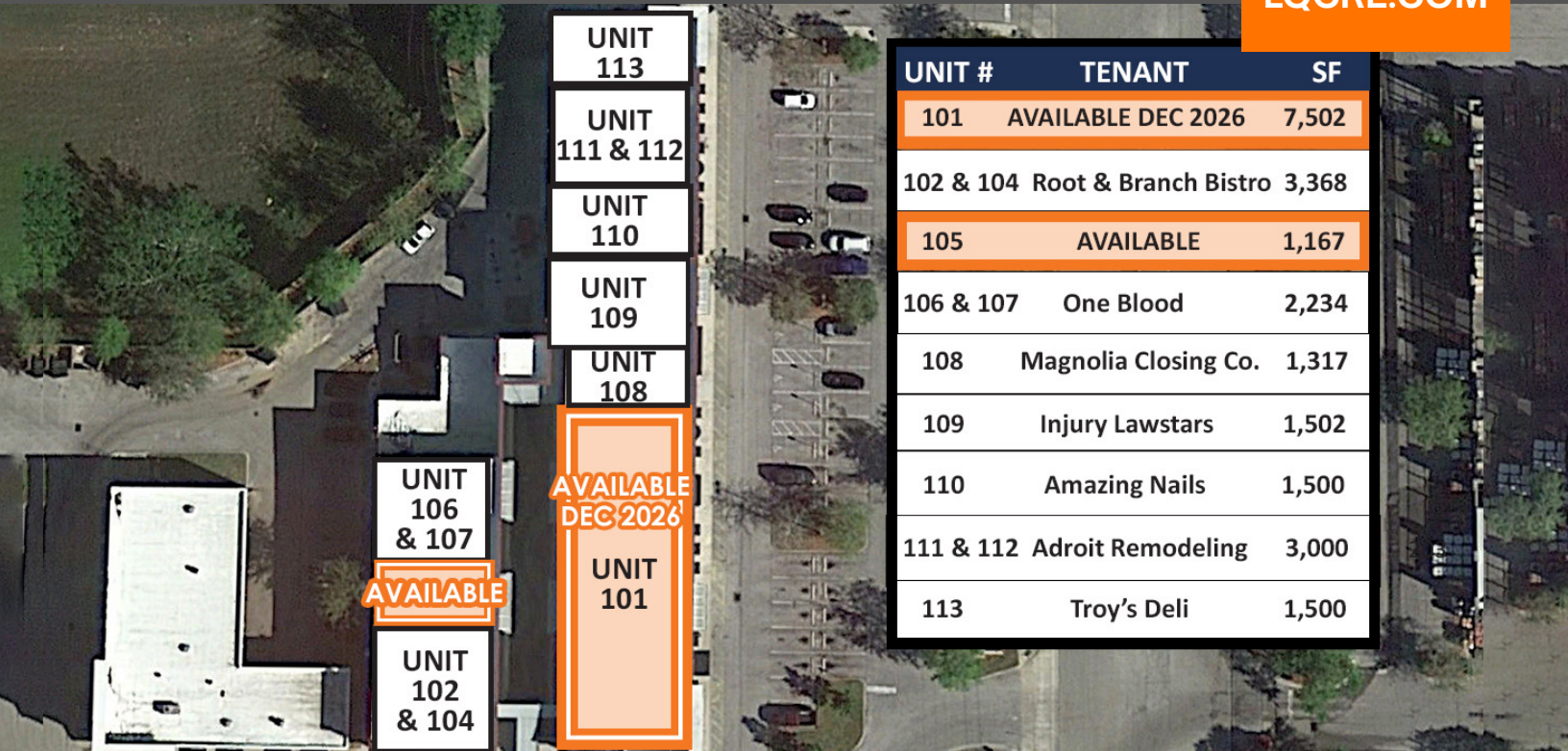
1200 Oakley Seaver Drive | Clermont, FL 34711

Retail & Office For Lease



LQ Commercial  
REAL ESTATE SERVICES

LQCRE.COM



UNIT #	TENANT	SF
201 & 202	KAK Management	2,104
203	Congressman's Office	1,183
204 & 205	Insurance & Tax Office	2,350
206 - 212	2ND GEN RESTAURANT	9,082
213	OGO Financial Services	1,521

**LQ Commercial**  
REAL ESTATE SERVICES  
500 Winderley Pl #104  
Maitland, FL 32751  
LQCRE.COM

**Julia Sosa**  
Founding Principal - Orlando  
D: 407.775.4358  
C: 407.257.8246  
jsosa@lqcre.com

**Eva Royal**  
Principal, Senior Associate  
D: 407.705.2217  
C: 407.421.3532  
eroyal@lqcre.com

# OAKLEY PLAZA

1200 Oakley Seaver Drive | Clermont, FL 34711

Retail & Office For Lease



LQ Commercial  
REAL ESTATE SERVICES

LQCRE.COM



 **LQ Commercial**  
REAL ESTATE SERVICES  
500 Winderley Pl #104  
Maitland, FL 32751  
LQCRE.COM

**Julia Sosa**  
Founding Principal - Orlando  
D: 407.775.4358  
C: 407.257.8246  
jsosa@lqcre.com

**Eva Royal**  
Principal, Senior Associate  
D: 407.705.2217  
C: 407.421.3532  
eroyal@lqcre.com

# OAKLEY PLAZA

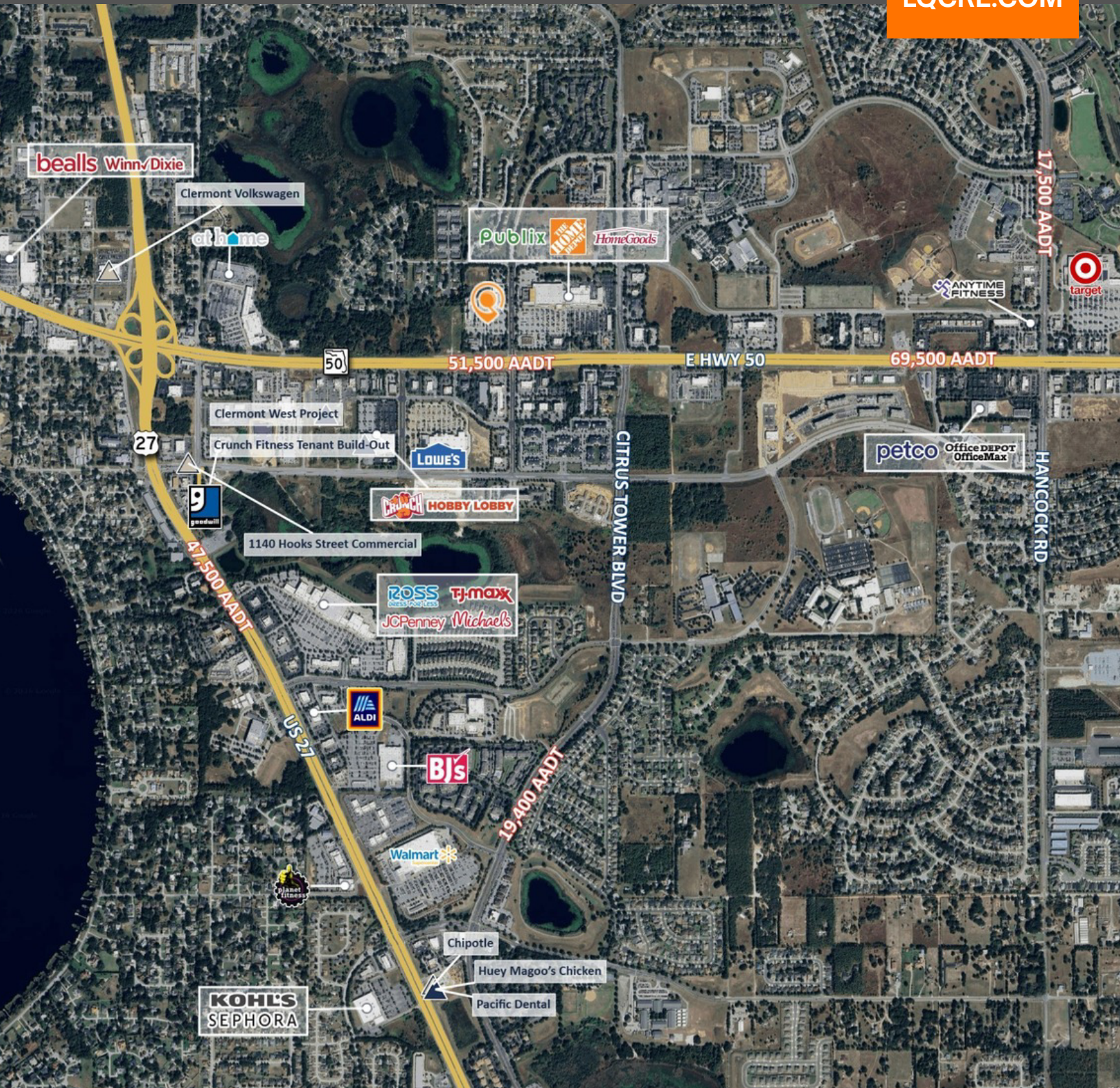
1200 Oakley Seaver Drive | Clermont, FL 34711

Retail & Office For Lease



LQ Commercial  
REAL ESTATE SERVICES

LQCRE.COM



 **LQ Commercial**  
REAL ESTATE SERVICES  
500 Winderley Pl #104  
Maitland, FL 32751  
LQCRE.COM

**Julia Sosa**  
Founding Principal - Orlando  
D: 407.775.4358  
C: 407.257.8246  
jsosa@lqcre.com

**Eva Royal**  
Principal, Senior Associate  
D: 407.705.2217  
C: 407.421.3532  
eroyal@lqcre.com