

# EXECUTIVE OFFICE SPACE for LEASE

Multiple Suites Available in the Imagine Building



**101 State Street Hollister, MO 65672**

Executive Office Space for Lease in Hollister, MO. Discover beautifully updated office suites in the Imagine Building, offering a modern, professional, and flexible environment ideal for small businesses, startups, or satellite offices. Flexible leasing options allow you to lease only the space you need now, with the ability to expand or adjust as your business grows. Conveniently located just minutes from Hollister's Industrial Park, Branson, College of the Ozarks, Lowe's, Menards, and other key destinations, with quick access to Highway 65, this central location offers excellent visibility, convenience, and functionality allowing you to reach anywhere in the area within minutes. Multiple suites available—call today for details or to schedule a private tour.

- **\$14.00/SF/Y**
- **Suite E 366 sf.**
- **Suite H 572 sf.**
- **Suite L 365 sf.**
- **Suite M 300 sf.**
- **Suite Q 200 sf.**
- **Suite P 144 sf.**
- **Suite 220 491 sf**

Property Offered By:

**Chris Vinton**




Vinton Commercial Realty  
1017 W Main St. Hwy 76  
Branson Missouri 65616

Mobile: 417.861.6314  
Phone: 417.334.9400  
chris@vintonrealty.com

**VintonRealty.com**


**VINTON**  
COMMERCIAL REALTY

	<b>60308148</b> <b>Commercial-All Types</b> <b>Office</b> <b>Active</b>	
	<table border="0"> <tr> <td> <b>County:</b> Taney  <b>Aprx Lot Size (Acres):</b> 0  <b>Aprx Year Built:</b> 1994  <b>Lake/River:</b> None  <b>Agreement Type:</b> Exclusive Right To Lease  <b>Sign on Property:</b> Yes  <b>Garage/Carport:</b> No                 </td> <td> <b>List Price:</b> \$14  <b>List Price/SqFt:</b> 0.05  <b>Lease Rate (\$/SF/YR):</b> 14  <b>Lease Type:</b> GR  <b>Lease Type:</b> GR  <b>SqFt - Total:</b> 300  <b>Section:</b> 18  <b>Township:</b> 22  <b>Range:</b> 21  <b>Inside City Limits:</b> Yes  <b>Construction Status:</b> Existing  <b>Foreclosure/Short Sale:</b> No                 </td> </tr> </table>	<b>County:</b> Taney <b>Aprx Lot Size (Acres):</b> 0 <b>Aprx Year Built:</b> 1994 <b>Lake/River:</b> None <b>Agreement Type:</b> Exclusive Right To Lease <b>Sign on Property:</b> Yes <b>Garage/Carport:</b> No
<b>County:</b> Taney <b>Aprx Lot Size (Acres):</b> 0 <b>Aprx Year Built:</b> 1994 <b>Lake/River:</b> None <b>Agreement Type:</b> Exclusive Right To Lease <b>Sign on Property:</b> Yes <b>Garage/Carport:</b> No	<b>List Price:</b> \$14 <b>List Price/SqFt:</b> 0.05 <b>Lease Rate (\$/SF/YR):</b> 14 <b>Lease Type:</b> GR <b>Lease Type:</b> GR <b>SqFt - Total:</b> 300 <b>Section:</b> 18 <b>Township:</b> 22 <b>Range:</b> 21 <b>Inside City Limits:</b> Yes <b>Construction Status:</b> Existing <b>Foreclosure/Short Sale:</b> No	

**Directions:** US-65 in Hollister take College of the Ozarks exit, turn left on MO-165N. Follow for .9 miles, turn right at stop sign to stay on MO-165N. Follow for .4 miles. Turn left on State Drive. Building directly in front of you  
**Legal Description:** OAKS LT 4 BLK A CITY OF HOLLISTER Legal on title shall govern.

**Marketing Remarks:** Small office for lease. Executive Office Space for Lease in Hollister, MO. Discover beautifully updated office suites in the Imagine Building, offering a modern, professional, and flexible environment ideal for small businesses, startups, or satellite offices. Suite M features approximately 300 sq. ft. of open office space, perfect for an efficient and professional workspace setup. Flexible leasing options allow you to lease only the space you need now, with the ability to expand or adjust as your business grows. Conveniently located just minutes from Hollister's Industrial Park, Branson, College of the Ozarks, Lowe's, Menards, and other key destinations, with quick access to Highway 65, this central location offers excellent visibility, convenience, and functionality—allowing you to reach anywhere in the area within minutes. Multiple suites available—call today for details or to schedule a private tour.  
 \*\*Information contained in this listing has been obtained through third party sources deemed reliable. Listing Broker assumes no responsibility for its accuracy and Buyer shall independently confirm any information set forth above.

Details	Dock Information	Tax & Legal
<b>How to Show:</b> Call Listing Agent; Call Listing Office <b>County:</b> Taney <b>View:</b> Panoramic <b>Miscellaneous:</b> Cable TV; Exhaust Fan(s); Handicap Accessible; Reception Area; Security Lighting; Smoke Detectors; Water Heater-Electric <b>Utilities Available:</b> Electric; High Speed Internet Access; Master Meter; Public Water; Water Well <b>Business Type:</b> Business Service; Office; Other-See Remarks	<b>Parking:</b> 20+ Spaces; Hard Surface; Parking Area; Private Drive <b>Heating:</b> Electric; Forced Air; Heat Pump <b>Cooling:</b> Central; Electric; Heat Pump; Zoned <b>Restrooms:</b> 4 <b>Waterfront/View:</b> None <b>Roof:</b> Flat Roof; Tar and Gravel	<b>Real Estate Tax:</b> 0 <b>RE Tax Provided By:</b> Assessor Records <b>Parcel ID:</b> 17-4.0-18-004-005-009.002 <b>Transaction Type:</b> Lease

	<b>Presented by</b> Christopher Vinton Vinton Commercial Realty 1017 W. Main Hwy 76 Branson, MO 65616 Office Phone: 417-334-9400 Agent Phone: 417-861-6314 <a href="mailto:chris@vintonrealty.com">chris@vintonrealty.com</a> <a href="http://www.VintonRealty.com">http://www.VintonRealty.com</a> 2003020919
--	---

Information is deemed to be reliable, but is not guaranteed. © 2025 MLS and FBS. Prepared by Christopher Vinton on Wednesday, October 22, 2025 1:08 PM. The information on this sheet has been made available by the MLS and may not be the listing of the provider.





For more information: Vinton Commercial Realty 417.334.9400 [chris@vintonrealty.com](mailto:chris@vintonrealty.com) [www.VintonRealty.com](http://www.VintonRealty.com)  
Disclaimer: Information has been obtained from a third party source and Vinton Commercial Realty accepts no responsibility for its accuracy



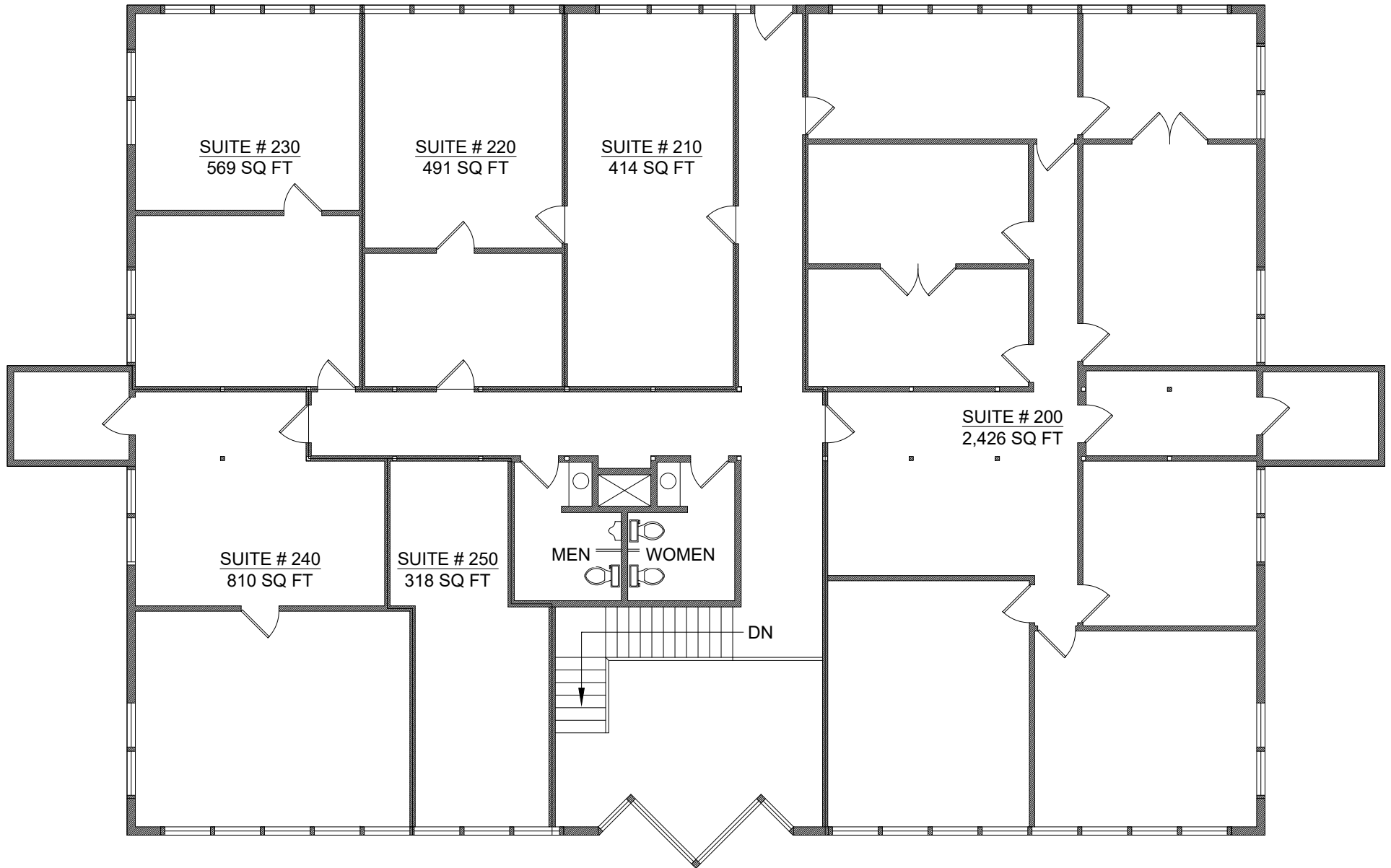
For more information: Vinton Commercial Realty 417.334.9400 [chris@vintonrealty.com](mailto:chris@vintonrealty.com) [www.VintonRealty.com](http://www.VintonRealty.com)  
Disclaimer: Information has been obtained from a third party source and Vinton Commercial Realty accepts no responsibility for its accuracy



## LEVEL 1 FLOOR PLAN

For more information: Vinton Commercial Realty 417.334.9400 [chris@vintonrealty.com](mailto:chris@vintonrealty.com) [www.VintonRealty.com](http://www.VintonRealty.com)

Disclaimer: Information has been obtained from a third party source and Vinton Commercial Realty accepts no responsibility for its accuracy



## LEVEL 2 FLOOR PLAN

For more information: Vinton Commercial Realty 417.334.9400 [chris@vintonrealty.com](mailto:chris@vintonrealty.com) [www.VintonRealty.com](http://www.VintonRealty.com)

Disclaimer: Information has been obtained from a third party source and Vinton Commercial Realty accepts no responsibility for its accuracy