



WELLS FARGO CENTER

333 S.E. 2nd Avenue

12,393 RSF | 30TH FLOOR



 CUSHMAN &
WAKEFIELD

FOR SUBLEASE

333 S.E. 2nd Avenue

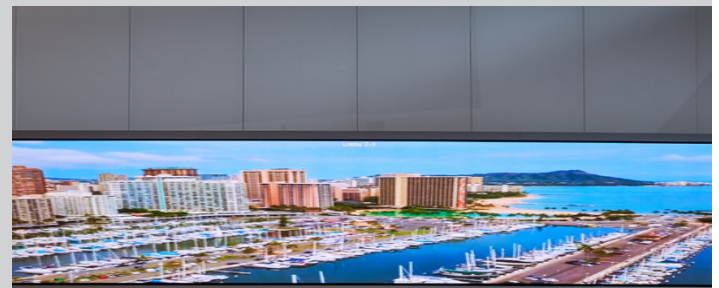
12,393 RSF | 30th FLOOR

Property Highlights

- **NEWLY BUILT PLUG & PLAY SPACE**
- Below Market Rent
- Furniture Negotiable
- Double Door Elevator Lobby Entrance
- Flexible Lease Term (LXD August 2034)

Property Highlights

- On-Site Hotel – Five Star JW Marriott Marquis/ Hotel Beaux Arts Autograph
- Direct Access to I-95, Brickell Avenue & Biscayne Boulevard
- On-Site Dining – Boulud Sud, Met Café & Bar, Threfortyfive Restaurant & The Purple Orchid
- Fitness Center, Virtual Bowling, NBA Approved Basketball Court, Salon & Spa
- Parking Garage – 2 per 1,000 RSF; \$195.00 per space, per month



VIVIAN GONZALEZ

Senior Director
+1 305 490 5753

Vivian.B.Gonzalez@cushwake.com

MATTHEW CHEEZEM

Executive Vice Chairman
+1 786 792 5212

matthew.cheezem@cushwake.com

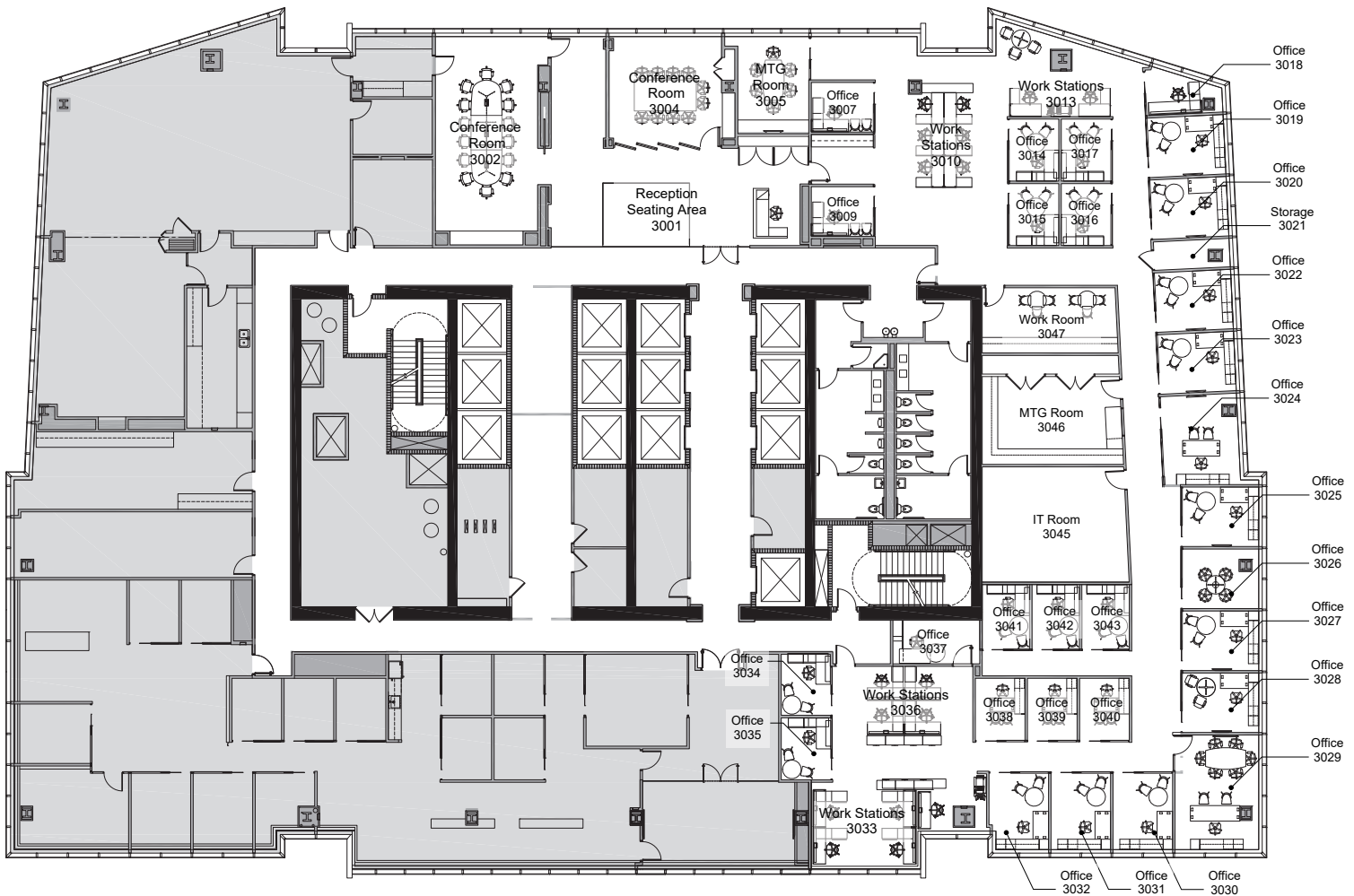
TYLER REYNOLDS

Managing Director
+1 786 792 5211

tyler.reynolds@cushwake.com



FLOOR PLAN



VIEW

 Matterport®

VIVIAN GONZALEZ

Senior Director
+1 305 490 5753

Vivian.B.Gonzalez@cushwake.com

MATTHEW CHEEZEM

Executive Vice Chairman
+1 786 792 5212

matthew.cheezem@cushwake.com

TYLER REYNOLDS

Managing Director
+1 786 792 5211

tyler.reynolds@cushwake.com

