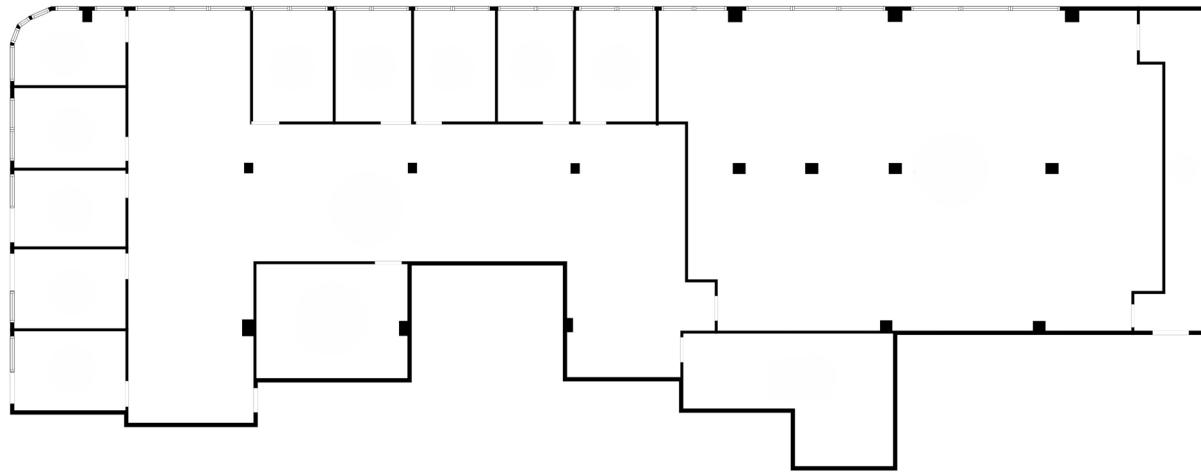


SUITE 303/305 | 8,333 SF

Two Woodfield Lake | 1100 E Woodfield Rd \ Schaumburg, IL



SPACE NOTES

- Asking Rate: \$19.50 PSF MG
- Class A Common Area Finishes
- Turn-Key Buildouts
- Conference Facility
- Renovated Tenant Lounge



Ryan Moen, SIOR

630.480.6346

RMoen@VersaRES.com

Steven Rea

630.468.1780

SRea@VersaRES.com

John Millner, CCIM

630.480.6342

JMillner@VersaRES.com

1 MID AMERICA PLAZA, 3RD FLOOR
OAKBROOK TERRACE, IL 60181
630.480.6413

EXCLUSIVELY LISTED BY

VERSA
REAL ESTATE SERVICES