

**11,075 RSF OFFICE SUITE
FOR LEASE**

VISTA OFFICE CENTRE
43460 RIDGE PARK DRIVE, TEMECULA, CA 92590



Mary Piper

951.445.4516

mpiper@leetemecula.com

DRE #01268829

Mike Hanna

951.445.4503

mhanna@leetemecula.com

DRE #01456055

 **LEE &
ASSOCIATES**
COMMERCIAL REAL ESTATE SERVICES

11,075 RSF OFFICE SUITE FOR LEASE

VISTA OFFICE CENTRE

43460 RIDGE PARK DRIVE, TEMECULA, CA 92590

PROJECT HIGHLIGHTS

- Premier 2-Story Class 'A' Office Building
- Excellent Location with Access to I-15 Freeway at Rancho California Road at the Base of the Temecula Foothills
- Close Proximity to Old Town Temecula, Gourmet Restaurants and Entertainment
- Perimeter Window Lined Suites with Panoramic Views of Temecula Valley
- Frontier Fios Enabled
- Abundant Parking @ 4:1,000 & Covered Parking
- Secured Building with Fob Access 24/7
- Professionally Managed by Strauss Investments
- See Attached for Availability

LEASE RATE

\$2.35 RSF-FSG*

(*FSG includes electricity & Janitorial)

Mary Piper

951.445.4516

mpiper@leetemecula.com

DRE #01268829

Mike Hanna

951.445.4503

mhanna@leetemecula.com

DRE #01456055



11,075 RSF OFFICE SUITE FOR LEASE

VISTA OFFICE CENTRE

43460 RIDGE PARK DRIVE, TEMECULA, CA 92590



AVAILABILITY

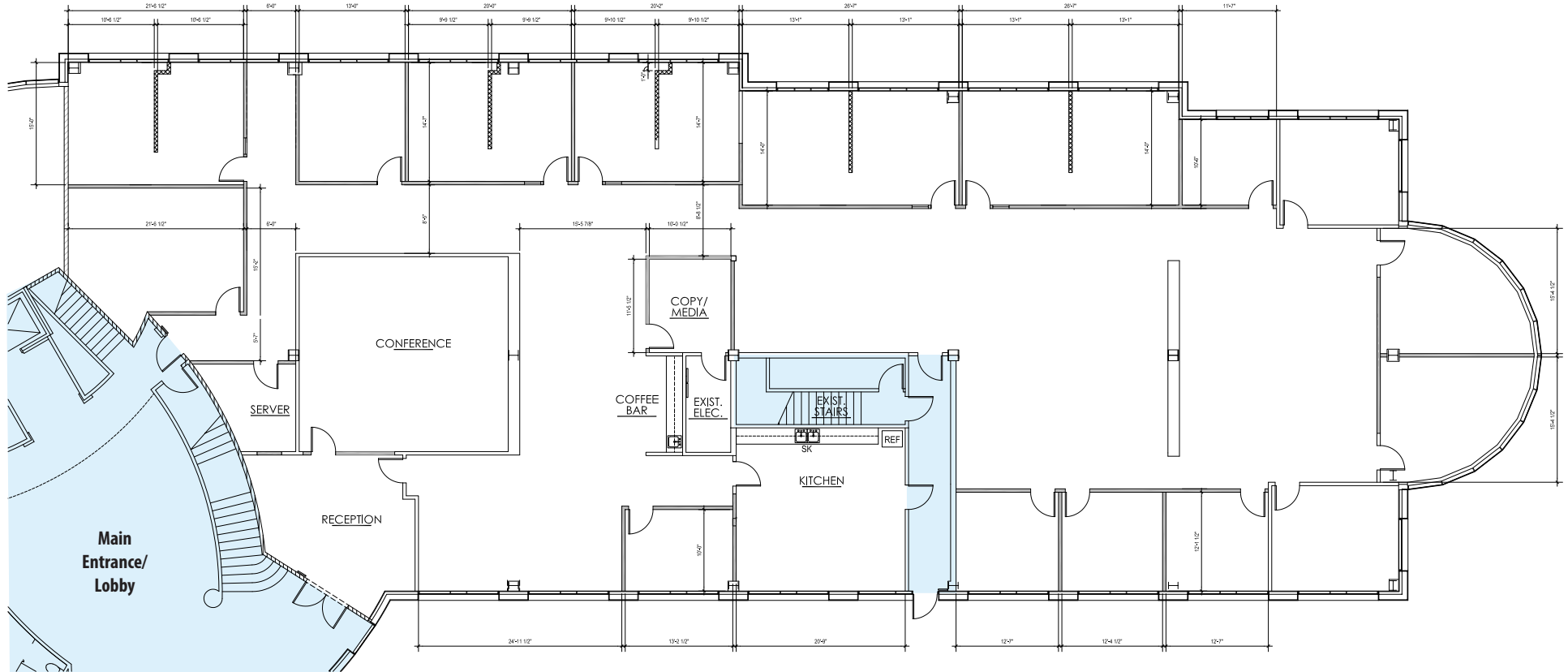
1ST FLOOR				
SUITE	RSF (±)	RATE PER RSF	AVAILABILITY	DESCRIPTION
100	11,075	\$2.35	August 1, 2026	14 window lined offices, open bullpen area, large conference/training room, large kitchen/breakroom and storage room. <i>Please Do Not Disturb Tenant.</i>
2ND FLOOR				
SUITE	RSF (±)	RATE PER RSF	AVAILABILITY	DESCRIPTION
100% Leased				
<p>Call agent for touring instructions.</p> <p>Rental rate based on Full Service Gross (FSG) which includes electricity and janitorial. Rates are subject to change at the Owner's sole discretion.</p>				

Rev. 03/19/2026

11,075 RSF OFFICE SUITE FOR LEASE

VISTA OFFICE CENTRE

43460 RIDGE PARK DRIVE, TEMECULA, CA 92590



AVAILABILITY

SUITE	RSF (±)	RATE PER RSF	AVAILABILITY	DESCRIPTION
100	11,075	\$2.35	August 1, 2026	14 window lined offices, open bullpen area, large conference/training room, large kitchen/breakroom and storage room