



Available For Lease

Industrial Building
16,582 SF

1013 Tamarac Drive
Carpentersville, Illinois 60110

PROPERTY HIGHLIGHTS

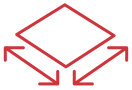
Well located, free-standing facility with great manufacturing infrastructure. Great access to I-90 via full 4 way interchange at Route 31 or Route 25.



16,582 SF BUILDING



4,500 SF OFFICE SPACE



0.66 ACRES



2 COVERED DOCKS
1 DID (10' x 12')



16' CLEAR HEIGHT



WET SPRINKLERS

Broker Contact Info

Steve Bass
NAI HIFFMAN
+1 630 317 0738
sbass@hiffman.com

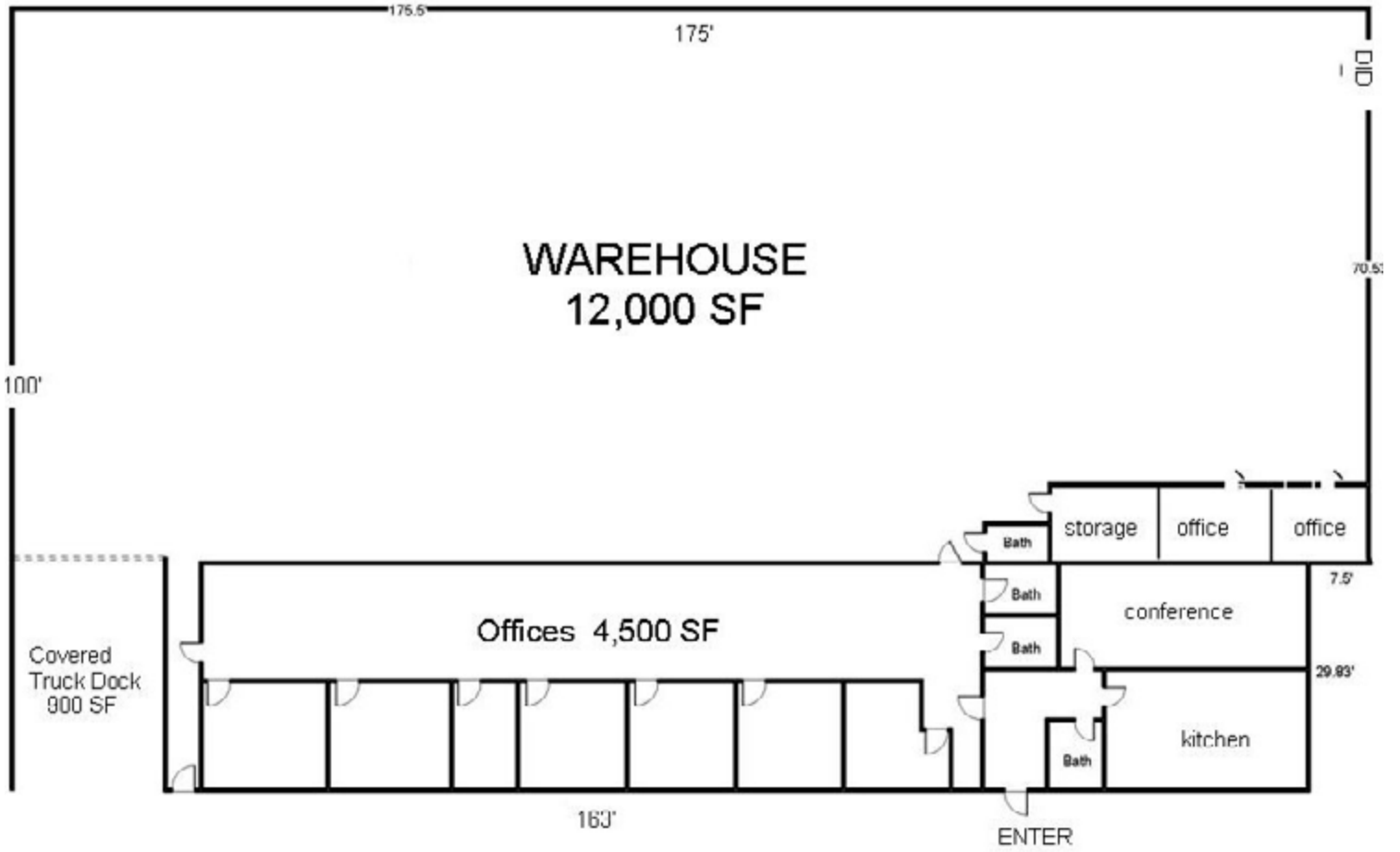
Jack Brennan
NAI HIFFMAN
+1 630 317 0754
jbrennan@hiffman.com

Dane Lamont
NAI HIFFMAN
+1 630 245 0770
dlamont@hiffman.com

Tak O'Haru
WHITECUBE LLC
+1 773 234 3313
toharu@whitecubellc.com

NO WARRANTY OR REPRESENTATION, EXPRESS OR IMPLIED, IS MADE AS TO THE ACCURACY OF THE INFORMATION CONTAINED HEREIN, AND THE SAME IS SUBMITTED SUBJECT TO ERRORS, OMISSIONS, CHANGE OF PRICE, RENTAL OR OTHER CONDITIONS, PRIOR SALE, LEASE OR FINANCING, OR WITHDRAWAL WITHOUT NOTICE, AND OF ANY SPECIAL LISTING CONDITIONS IMPOSED BY OUR PRINCIPALS NO WARRANTIES OR REPRESENTATIONS ARE MADE AS TO THE CONDITION OF THE PROPERTY OR ANY HAZARDS CONTAINED THEREIN ARE ANY TO BE IMPLIED.

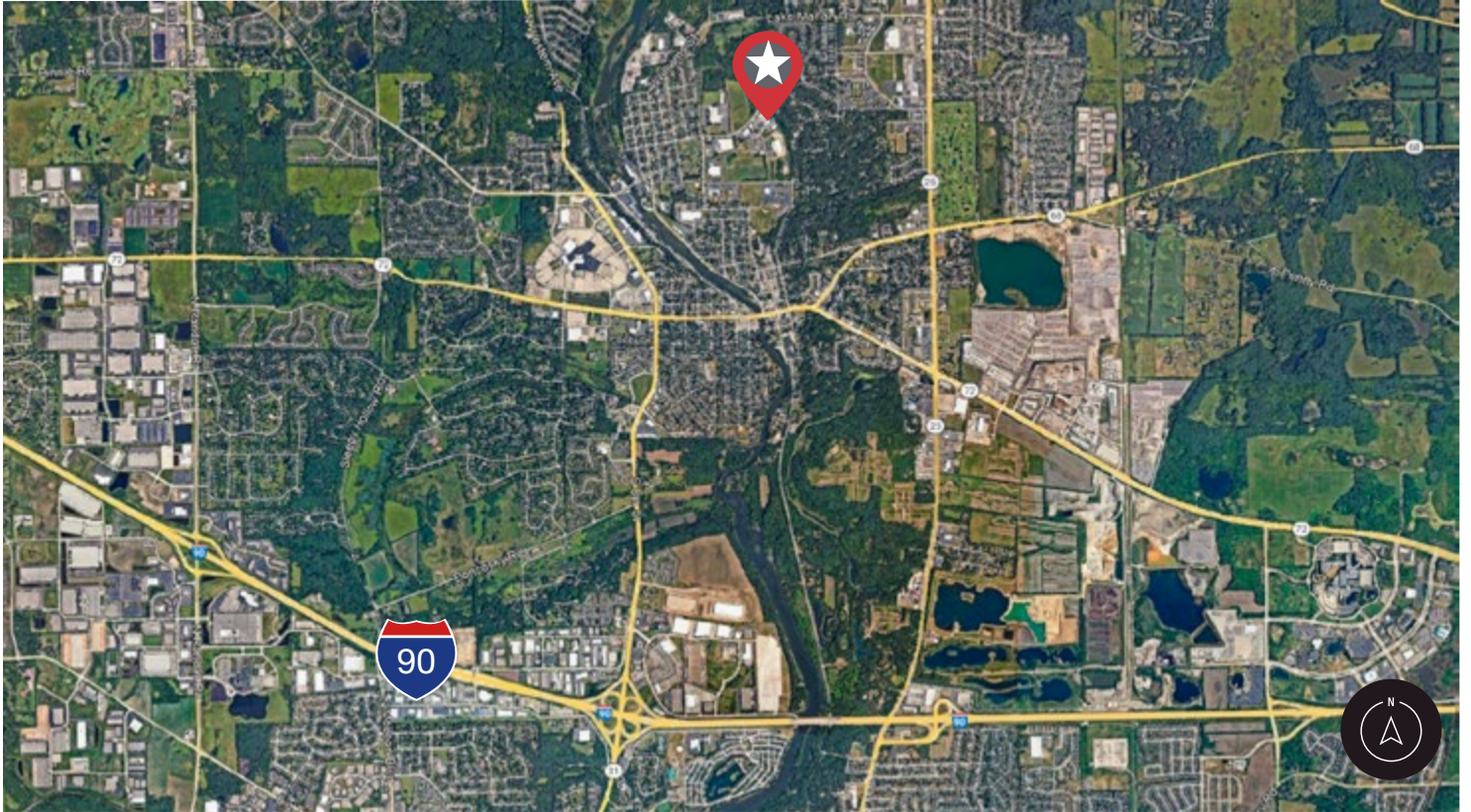
SITE PLAN



One Oakbrook Terrace
Suite 400
Oakbrook Terrace, Illinois 60181
+1 630 932 1234

1013 TAMARAC DRIVE, CARPENTERSVILLE ILLINOIS | AVAILABLE FOR LEASE

GREAT ACCESS TO I-90 VIA FULL 4 WAY INTERCHANGE AT ROUTE 31 OR ROUTE 25



FOR MORE INFORMATION CALL:

Steve Bass

NAI HIFFMAN

+1 630 317 0738

sbass@hiffman.com

Jack Brennan

NAI HIFFMAN

+1 630 317 0754

jbrennan@hiffman.com

Dane Lamont

NAI HIFFMAN

+1 630 245 0770

dlamont@hiffman.com

Tak O'Haru

WHITECUBE LLC

+1 773 234 3313

toharu@whitecubellc.com

One Oakbrook Terrace
Suite 400
Oakbrook Terrace, Illinois 60181
+1 630 932 1234

NAIHiffman

HIFFMAN
NATIONAL

hiffman.com