



FOR LEASE

Asking Rate:

**\$12-\$14
PSF NNN**

Contact us:

Daniel B. Smith, CCIM

Brokerage | Arkansas

+1 479 318 8488

dan.b.smith@ar.colliers.com

Wade Smith, SIOR

Brokerage | Arkansas

+1 214 924 1605

wade.smith@ar.colliers.com



Accelerating success.

3503 S 55th Street, Suite 200

Rogers, AR 72758

+1 479 636 9000

colliers.com/arkansas

1209 W Easy Street

Rogers, Arkansas

NEWLY CONSTRUCTED FLEX/WAREHOUSE

Property Amenities

- 4,716 SF to 51,699 SF available for lease
- Four loading docks total for the 51,699 SF space or 1 per 13,000 SF space
- Clear height up to 31'5"
- Zoned "I-2," Heavy Industrial
- Tenant Improvement allowance negotiable
- Each 13,000 SF bay is 76' wide by 171' deep
- 3-phase/480V power
- Separately metered
- Sprinklered

Copyright © 2026 Colliers International.

Information herein has been obtained from sources deemed reliable, however its accuracy cannot be guaranteed. The user is required to conduct their own due diligence and verification.

Property Photos



PROPERTY SITS AMONG MAJOR DISTRIBUTION USERS

Copyright © 2026 Colliers International.

Information herein has been obtained from sources deemed reliable, however its accuracy cannot be guaranteed. The user is required to conduct their own due diligence and verification.

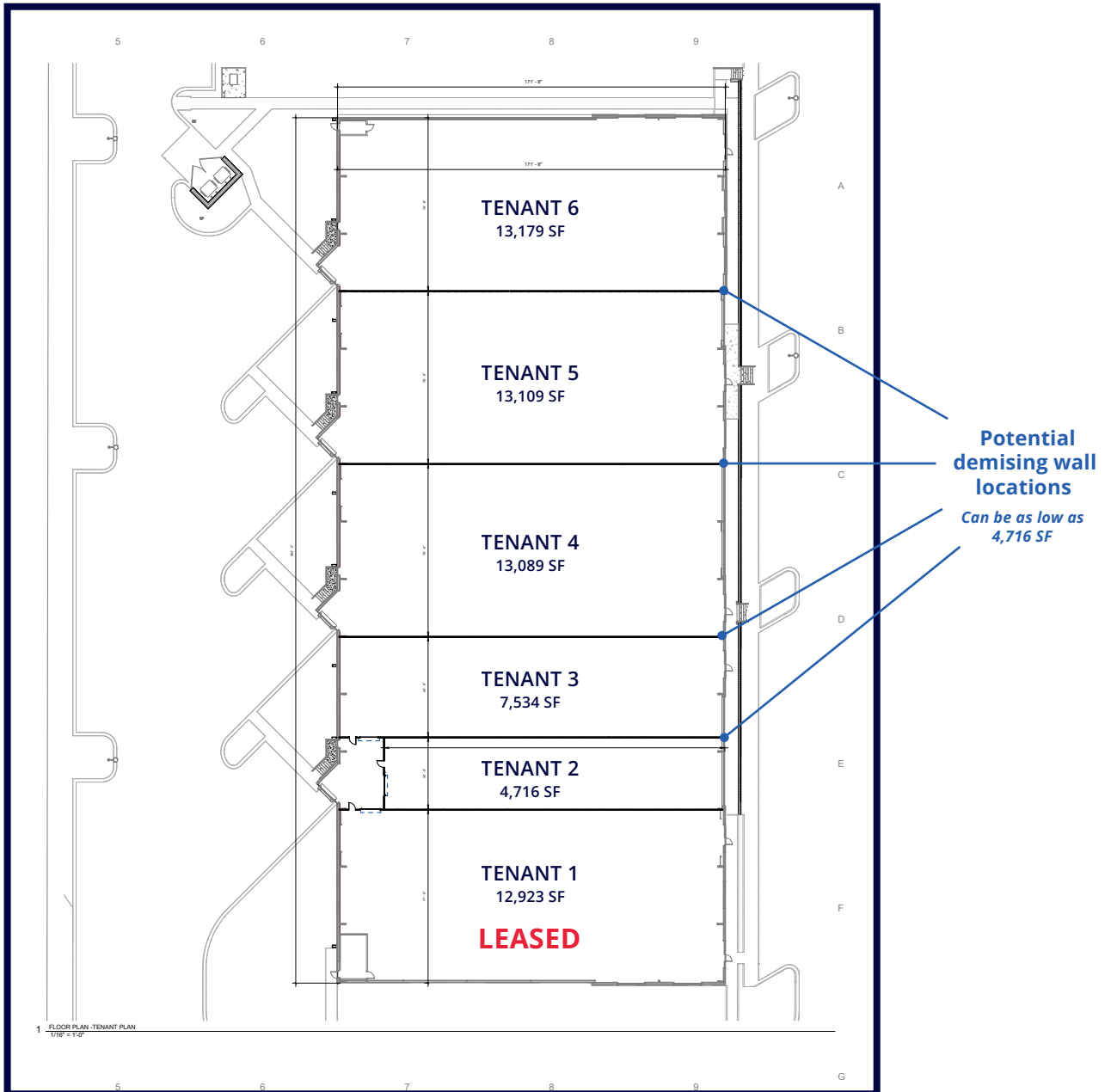
Property Photos



Copyright © 2026 Colliers International.

Information herein has been obtained from sources deemed reliable, however its accuracy cannot be guaranteed. The user is required to conduct their own due diligence and verification.

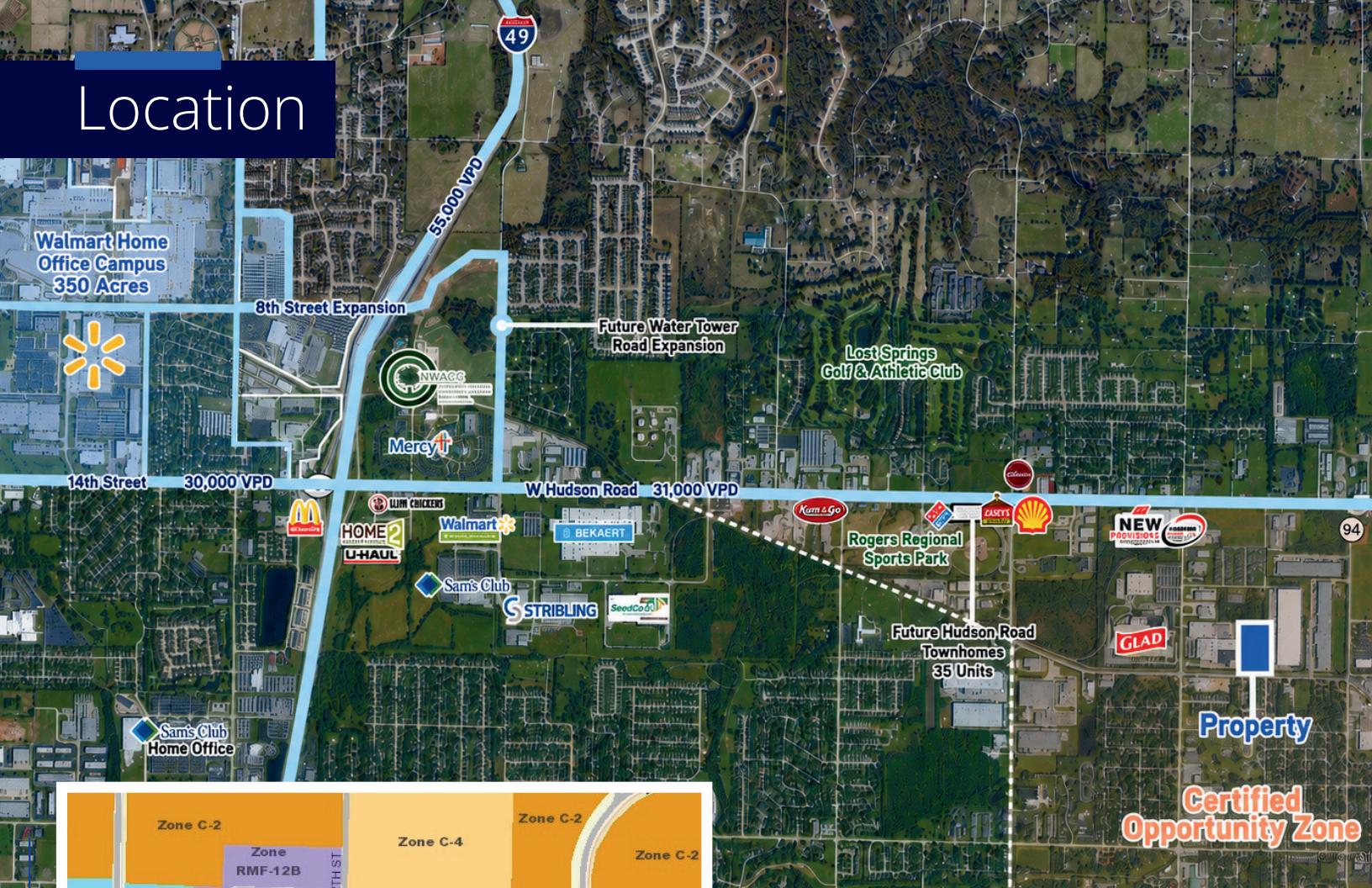
Floor Plan



Delivery of Space:

- 3 Phase/480V power
- Finished floor except trench for plumbing
- Heat-only warehouse
- Sprinkler system
- Water/sewer locations to be determined with tenant improvements
- Separately metered

Location



Contact us:

Daniel B. Smith, CCIM

Brokerage | Arkansas
 +1 479 318 8488
 dan.b.smith@ar.colliers.com

Wade Smith, SIOR

Brokerage | Arkansas
 +1 214 924 1605
 wade.smith@ar.colliers.com



Quick access to
 Highway 62 &
 Interstate 49
 (3 miles)



Located in an
 industrial area
 of Rogers, AR



I-2 zoning allows
 a wide range of
 industrial/flex uses



Accelerating success.

3503 S 55th Street, Suite 200
 Rogers, AR 72758
 +1 479 636 9000
 colliers.com/arkansas

About the Brokers



Daniel B. Smith, CCIM

Dan Smith specializes exclusively in land transactions across Northwest Arkansas. With a Master's in Real Estate Development, a CCIM designation, and brokerage experience since 2009, he has closed hundreds of millions in land deals and has focused solely on land since 2020.

Dan advises buyers, sellers, and developers throughout Benton and Washington Counties on land acquisition, disposition, development site analysis, and 1031 exchanges, bringing deep local knowledge and a strategic, analytical approach to every transaction.



+1 479 318 8488



dan.b.smith@ar.colliers.com

Wade Smith, SIOR

Wade Smith has more than 20 years of commercial real estate experience in both Dallas, Texas and Northwest Arkansas. A native of Arkansas, he moved back to Arkansas to join the Colliers office of NWA in 2016 after previously working with Colliers in Dallas, TX since 2011. At Colliers, he has specialized in Office and Industrial leasing and sales.

Wade's responsibilities include new business development, lease structure and negotiation, market and financial analysis. Throughout his brokerage career Wade has represented a wide range of corporate users in both the office and industrial sectors.



+1 214 924 1605



wade.smith@ar.colliers.com

The Colliers logo, featuring the word "Colliers" in white serif font on a dark blue rectangular background with a yellow and red horizontal stripe at the bottom.

Copyright © 2026 Colliers International.

Information herein has been obtained from sources deemed reliable, however its accuracy cannot be guaranteed. The user is required to conduct their own due diligence and verification.