

FOR LEASE

20  
DE BOERS DRIVE  
TORONTO

domo

THE **domo** CENTRE

**MIXED USE LEASING:**  
OFFICE // RETAIL // MEDICAL

**CBRE**



Please visit our website at:  
[www.domocentre.ca](http://www.domocentre.ca)

# 20 DE BOERS DRIVE

TORONTO • ON



## HIGHLIGHTS

- + 3 storey high common atrium, green wall and cafe
- + Office configurations with up to 20' high ceiling heights

# CBRE



Six levels of interior parking above grade interlinked with your office floor



## PROPERTY DETAILS

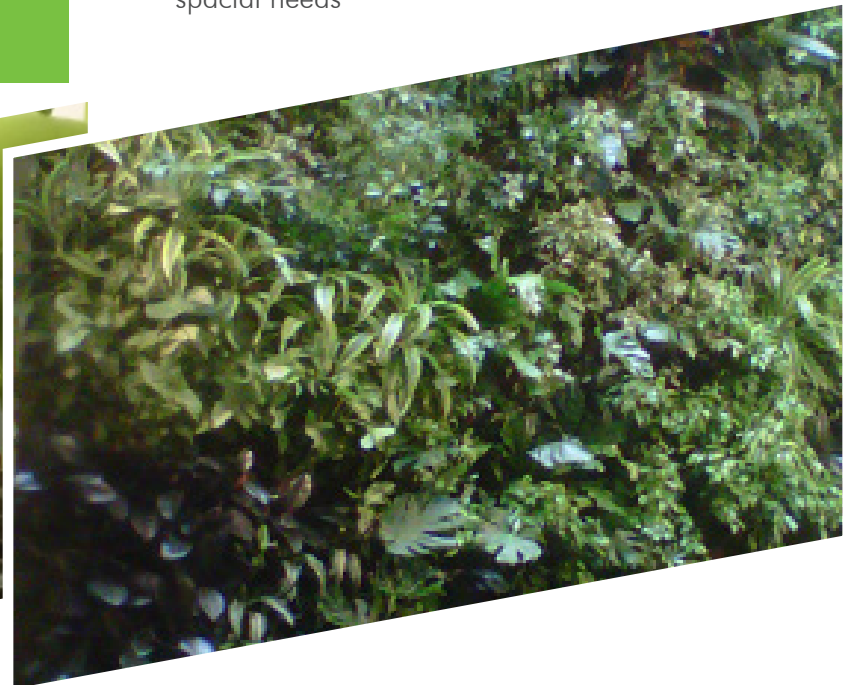
- + 300 meters from Downsview Subway Station to Downtown Toronto and future link to York University and Vaughan Center
- + Direct central access to Highway 401 and 400 series of highways, 20 minutes to airport
- + Minimum 10' high ceilings, building standard 9' high solid wood doors
- + Suites designed and customized to your specific spacial needs

# SUSTAINABILITY AT THE DOMO CENTRE



## GEOTHERMAL SYSTEM

Tenant controlled suite specific heating and cooling units, interconnected with an energy efficient geothermal system with 33,000 feet of underground transfer piping



## GREEN WALL

Biofilter living green wall improves indoor air quality by removing common indoor air pollutants and creating energy rich oxygen

# 20 DE BOERS DRIVE

TORONTO • ON



Please visit our website at:  
[www.domocentre.ca](http://www.domocentre.ca)

## SUITES AVAILABLE

Suite #	Size (SF)	Rental Rate (PSF)
Suite 109	4,247	\$15.95
Suite 162	384	\$1,199 per month
Suite 166	1,590	\$15.95
Suite 169	5,721	\$15.95
Suite 200	5,741	\$15.95
Suite 200-212	9,499	\$15.95
Suite 212	3,257	\$15.95
Suite 214	1,544	\$15.95
Suite 305	3,053	\$16.95
Suite 420-430	2,766	\$18.45
Suite 500	4,137	\$18.45

Additional Rent (2020) : \$14.21



**CBRE**



Tenant access to rooftop gardens, or options for your own private deck with plants and trees

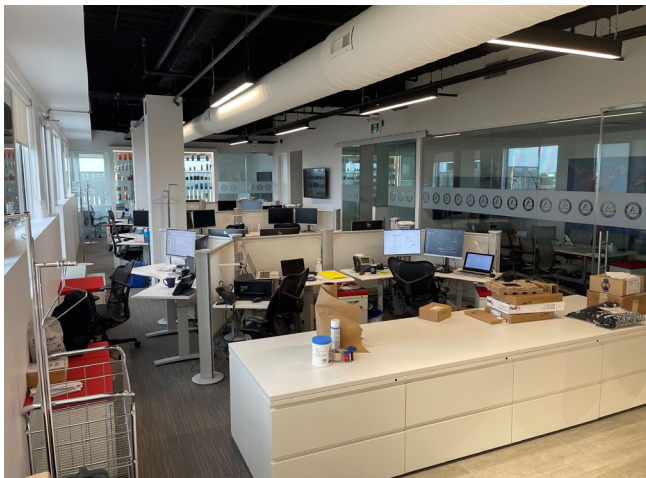
# 20 DE BOERS DRIVE

TORONTO • ON

## SUITE 420-430 PHOTOS

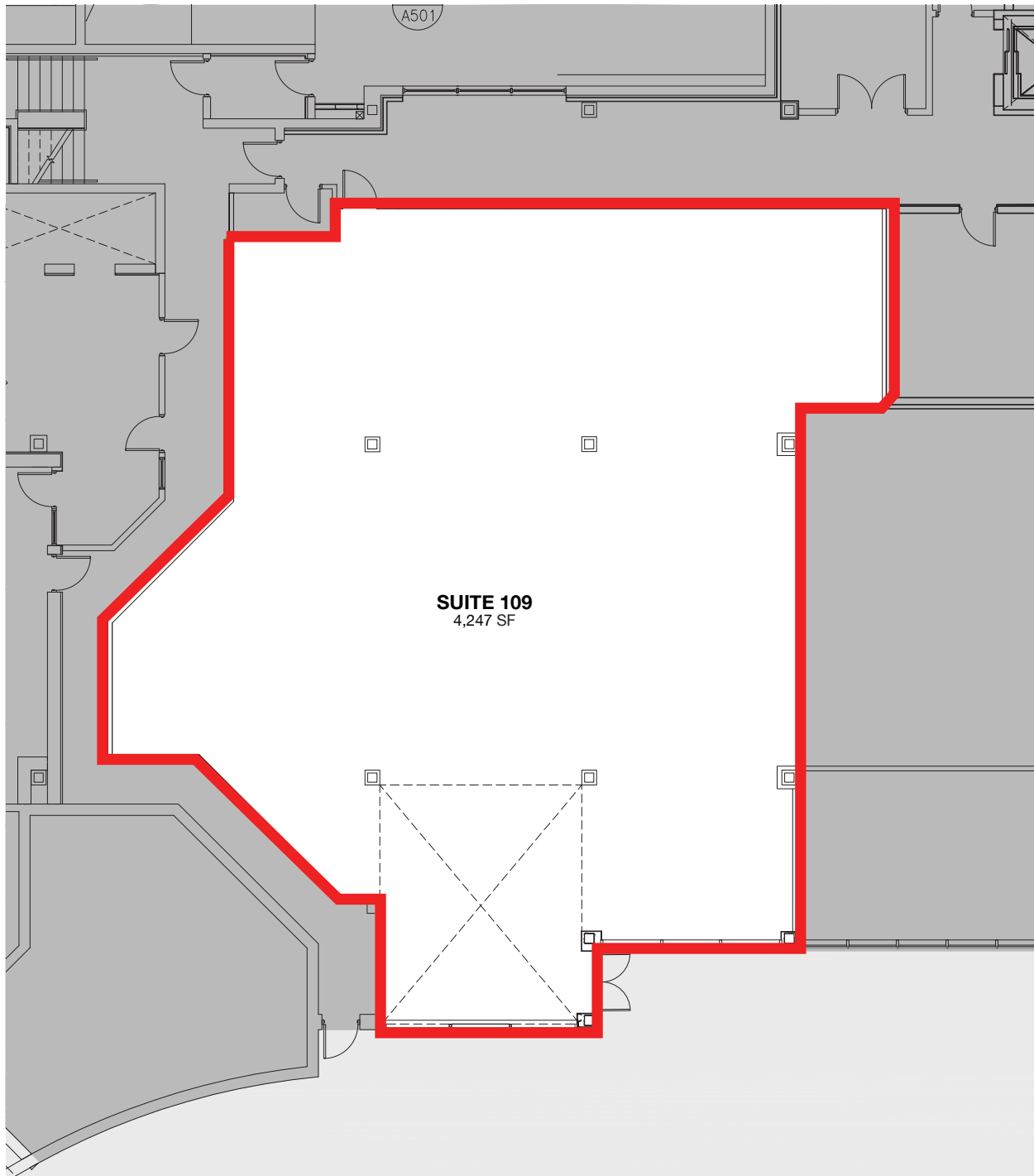


Please visit our website at:  
[www.domocentre.ca](http://www.domocentre.ca)



# 20 DE BOERS DRIVE

TORONTO • ON



THE **domo** CENTRE

DRAWING:  
**SUITE 109**

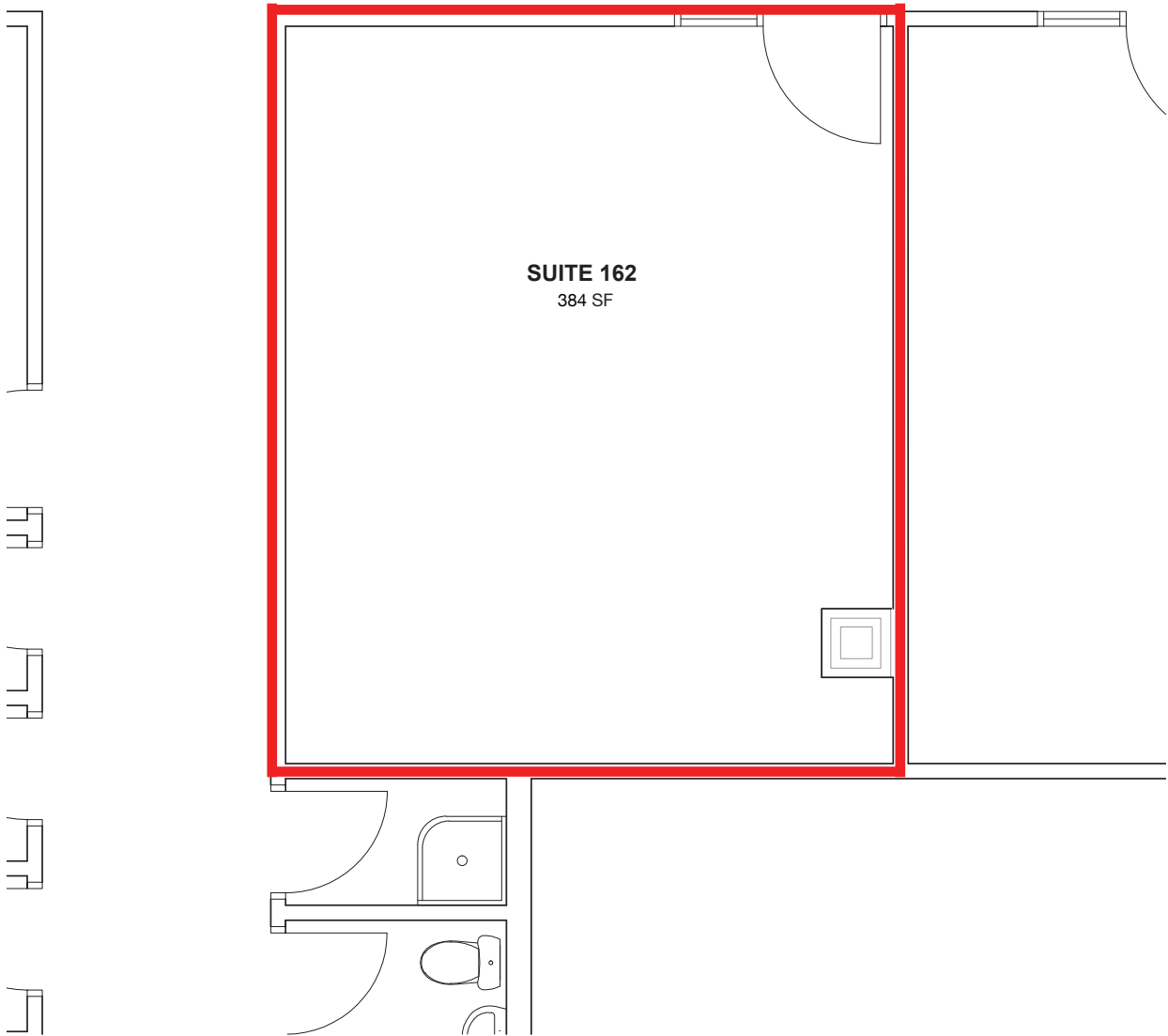
GROSS SQUARE FEET:  
**4,247 SF**

SCALE:  
**1:150**

**CBRE**

# 20 DE BOERS DRIVE

TORONTO • ON



THE **domo** CENTRE

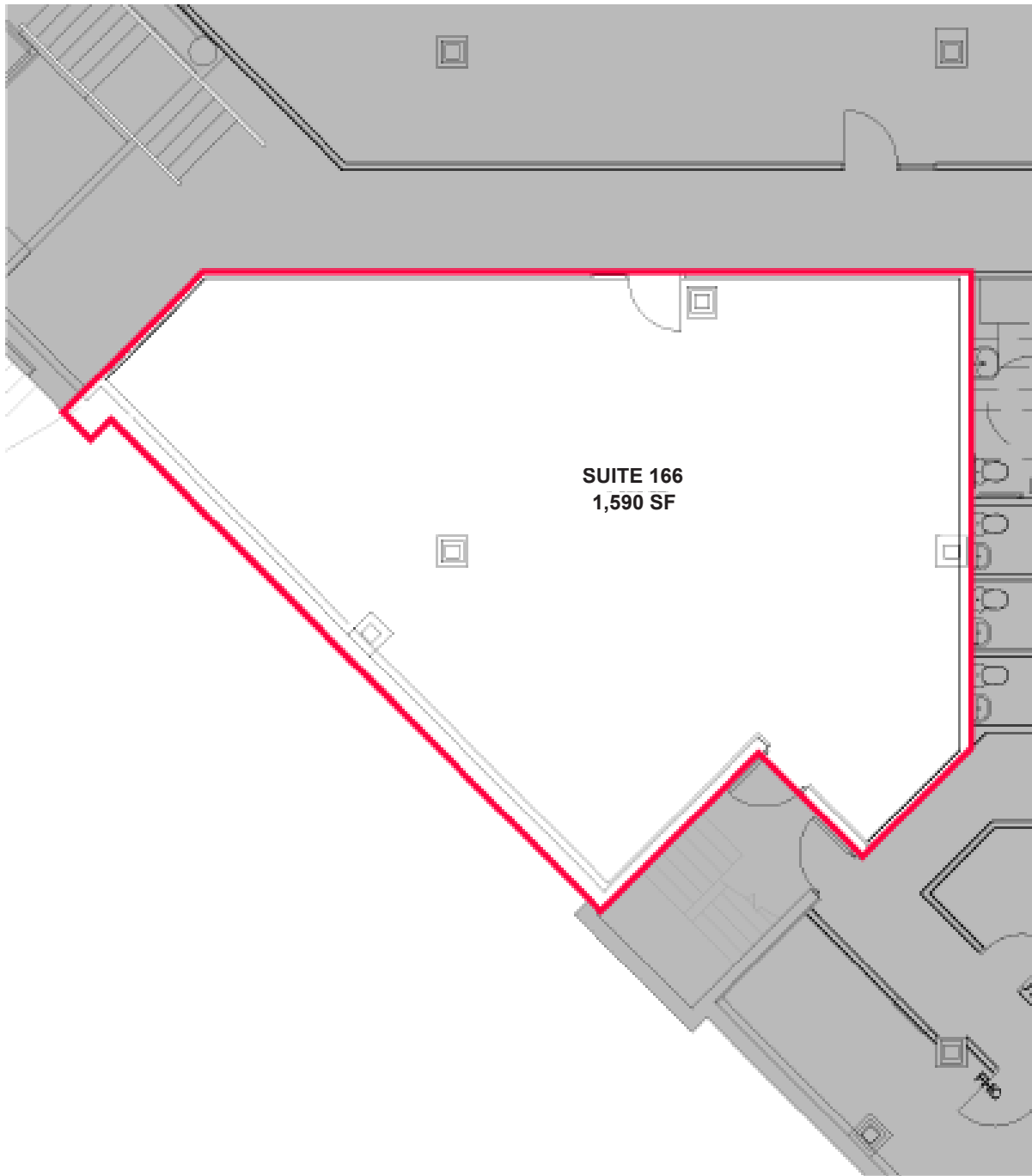
DRAWING:  
**SUITE 162**

GROSS SQUARE FEET:  
**384 SF**

SCALE:  
**1:50**

# 20 DE BOERS DRIVE

TORONTO • ON



SUITE 166  
1,590 SF

THE **domo** CENTRE

DRAWING:  
**SUITE 166**

GROSS SQUARE FEET:  
**1,590 SF**

SCALE:  
**1:100**

**CBRE**

# 20 DE BOERS DRIVE

TORONTO • ON



THE **domo** CENTRE

DRAWING:  
**SUITE 169**

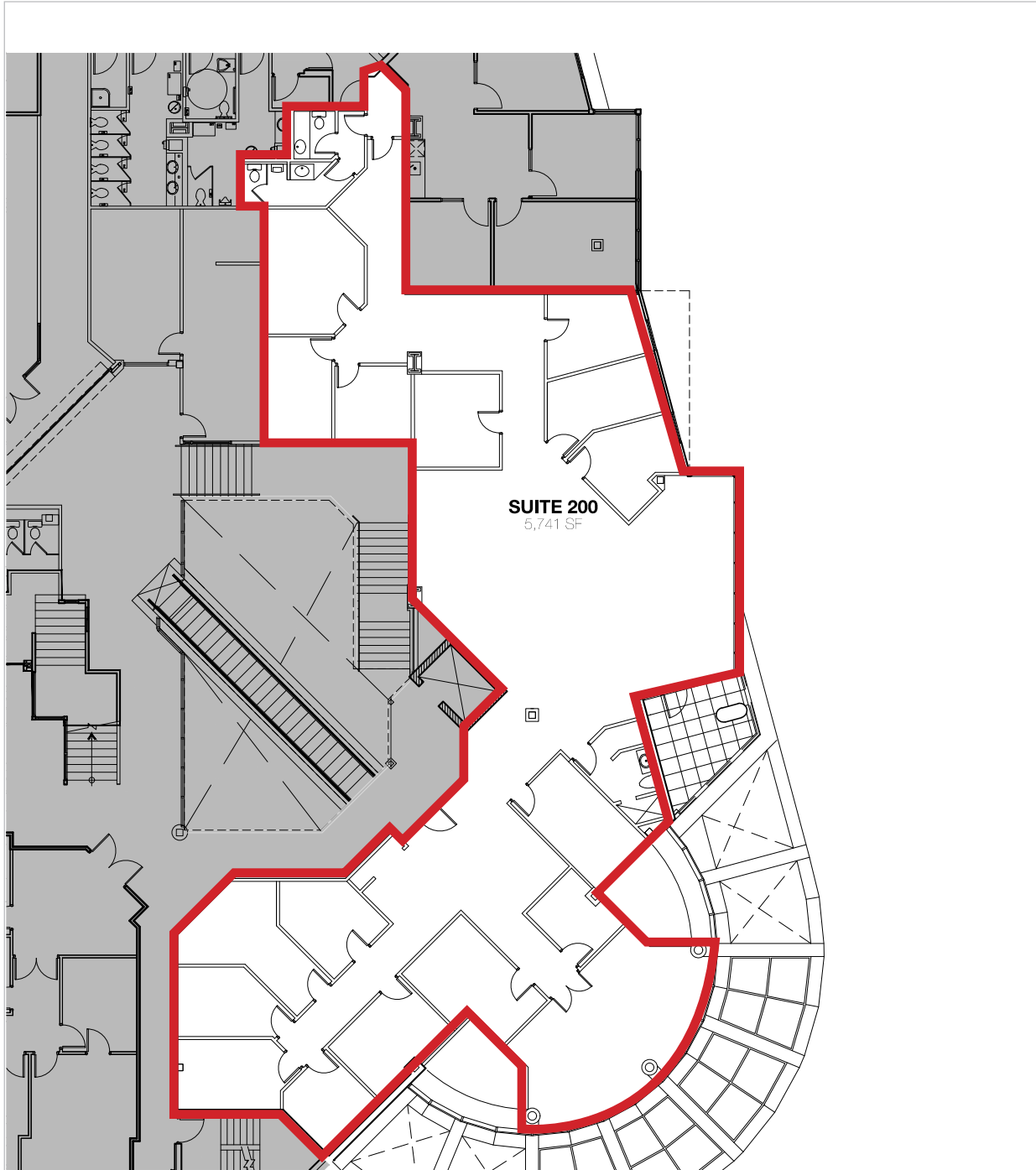
GROSS SQUARE FEET:  
**5,721 SF**

SCALE:  
**1:200**

**CBRE**

# 20 DE BOERS DRIVE

TORONTO • ON



**domo** CENTRE

DRAWING:  
**SUITE 200**

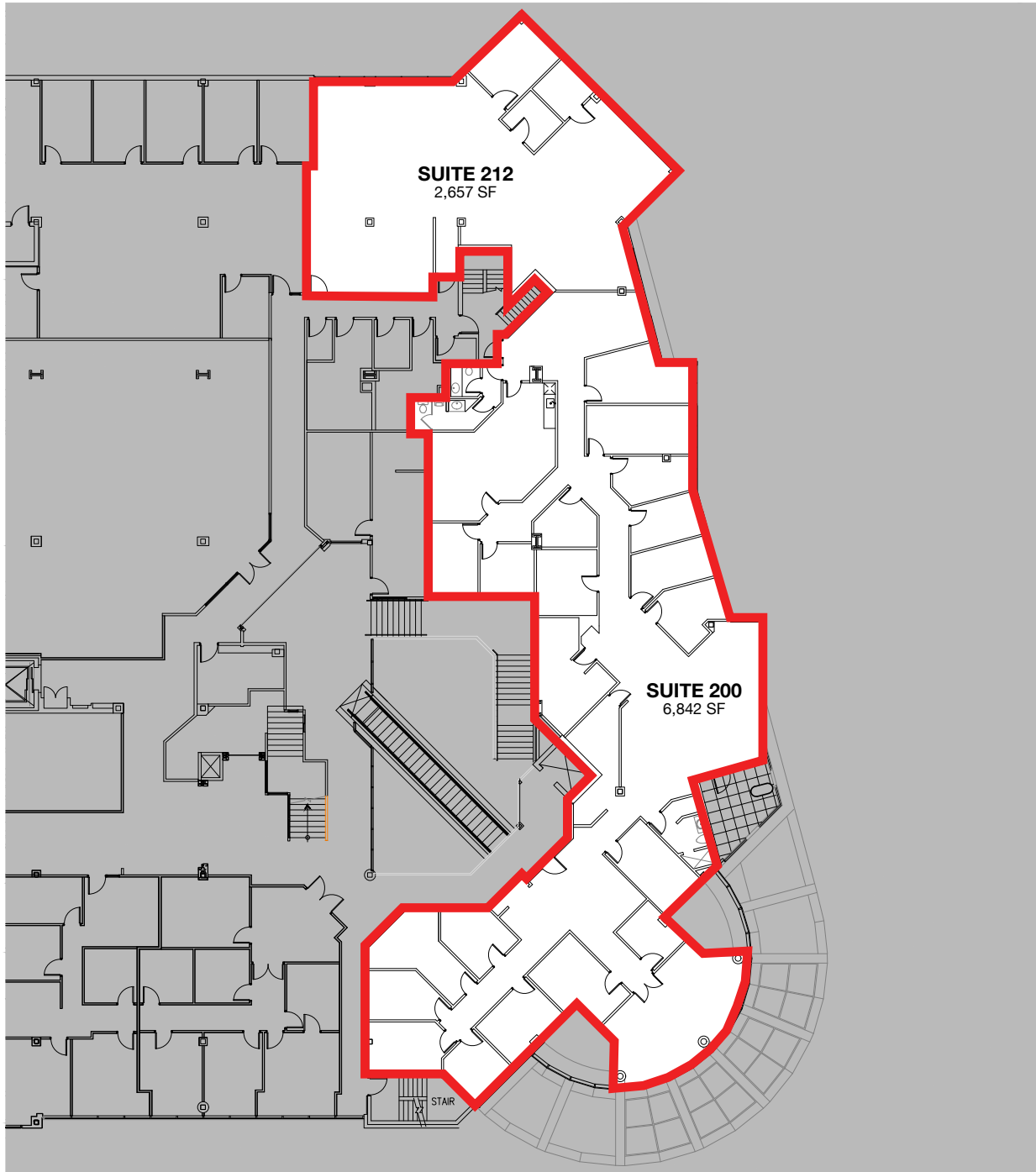
GROSS SQUARE FEET:  
**5,741 SF**

SCALE:  
**1:200**

**CBRE**

# 20 DE BOERS DRIVE

TORONTO • ON



THE **domo** CENTRE

DRAWING:  
**SUITE 200 + 212**

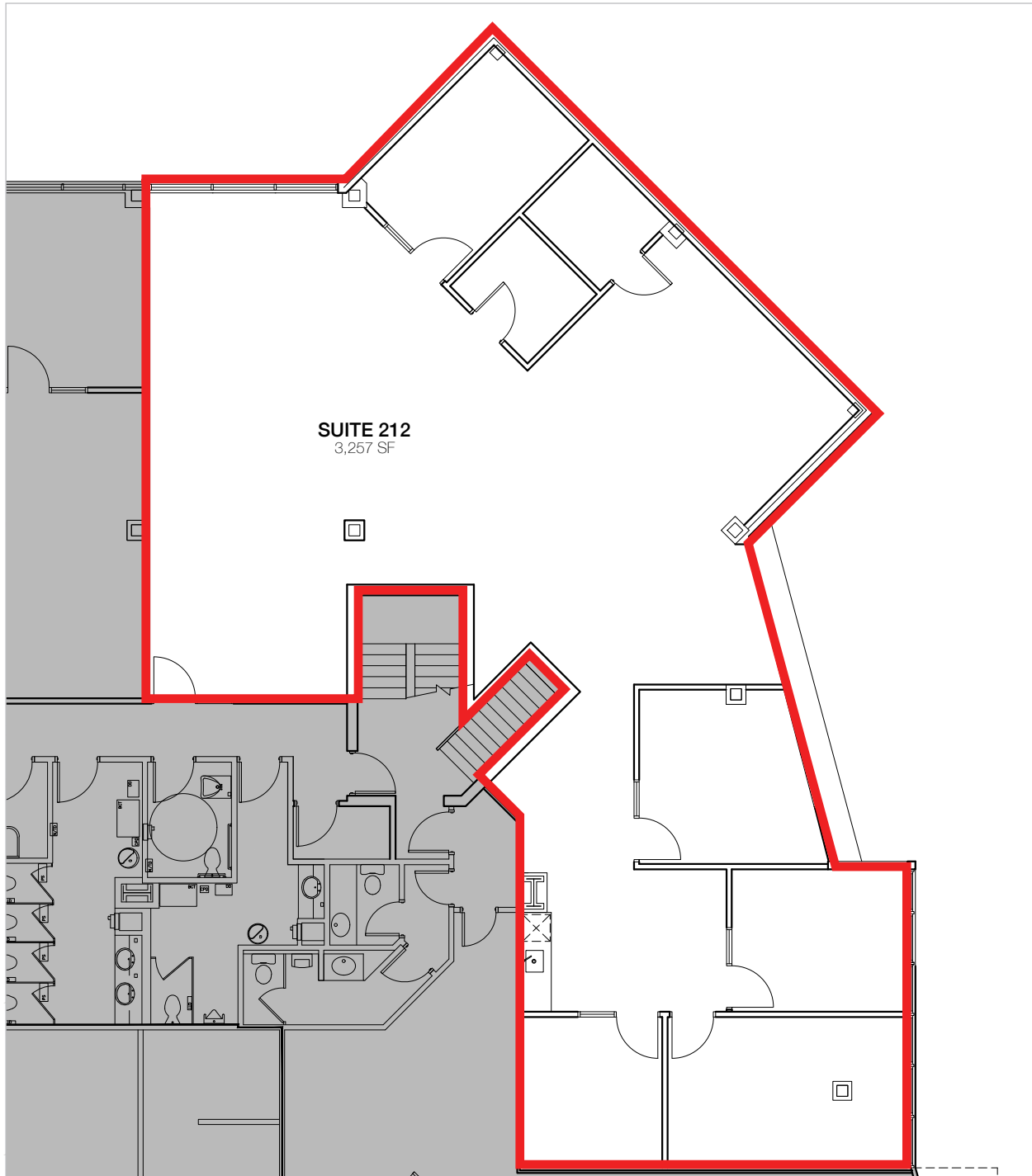
GROSS SQUARE FEET:  
**9,499 SF**

SCALE:  
**1:300**

**CBRE**

# 20 DE BOERS DRIVE

TORONTO • ON



THE **domo** CENTRE

DRAWING:  
**SUITE 212**

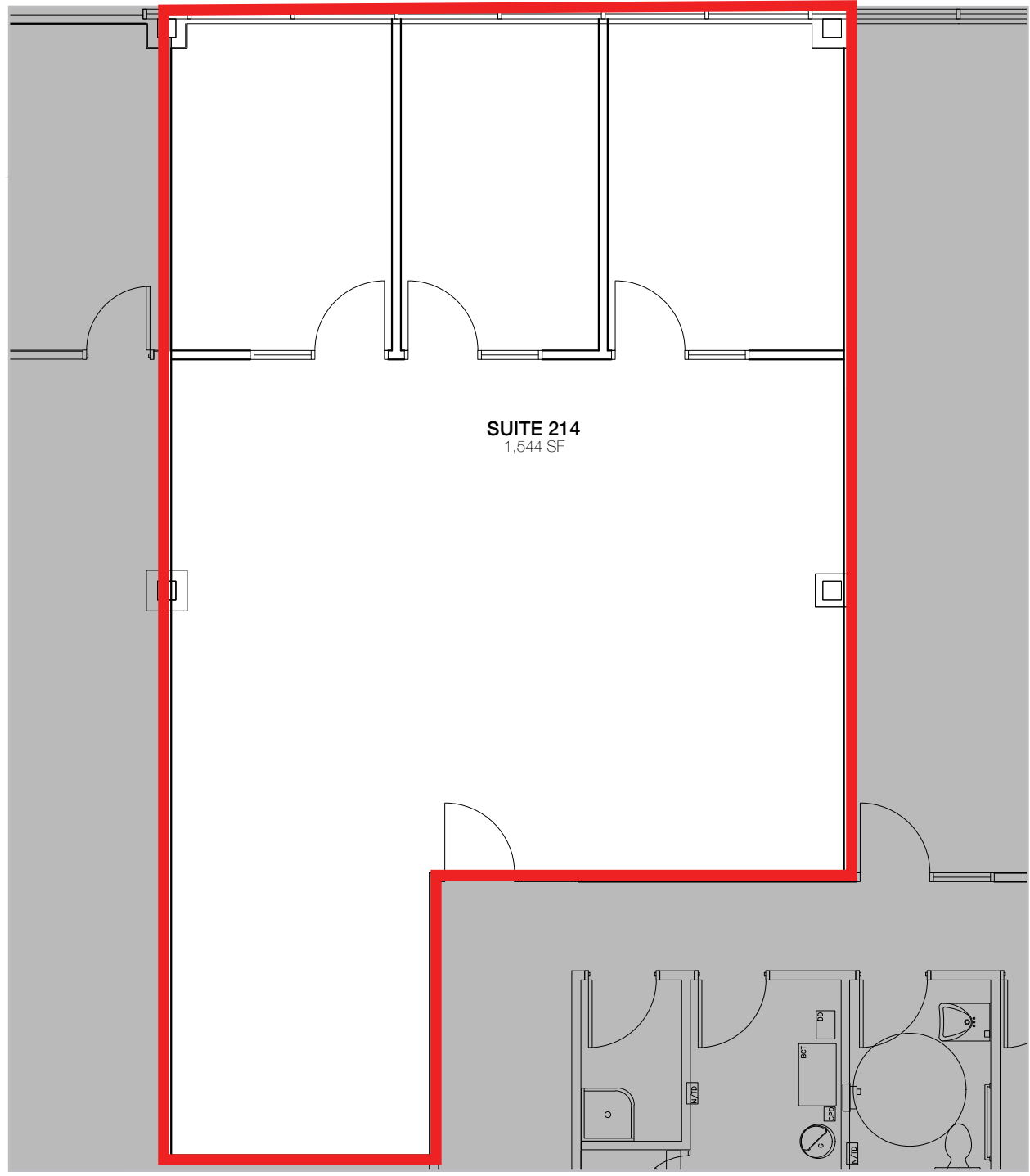
GROSS SQUARE FEET:  
**3,257 SF**

SCALE:  
**1:125**

**CBRE**

# 20 DE BOERS DRIVE

TORONTO • ON



SUITE 214  
1,544 SF

THE **domo** CENTRE

DRAWING:  
**SUITE 214**

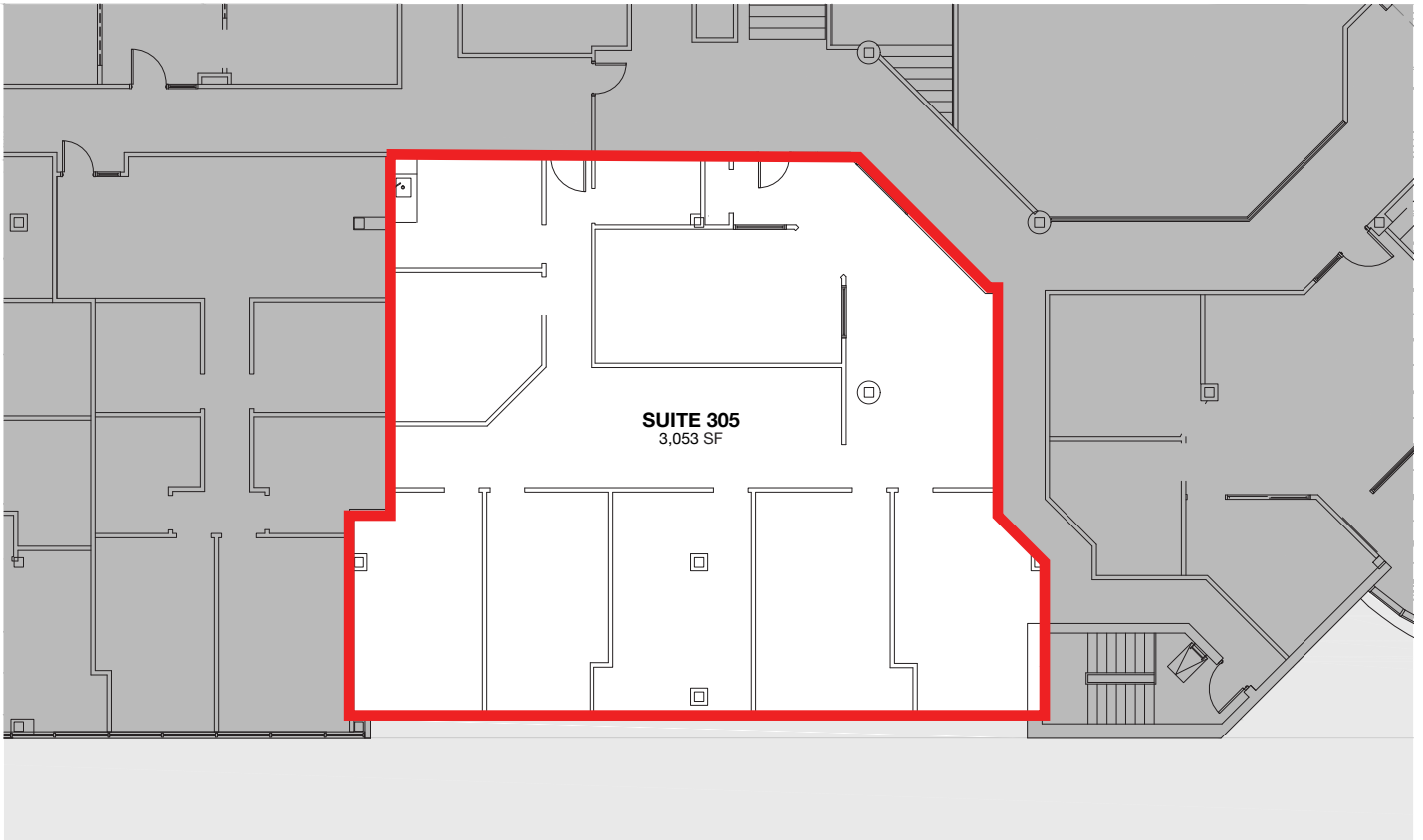
GROSS SQUARE FEET:  
**1,544 SF**

SCALE:  
**1:75**

**CBRE**

# 20 DE BOERS DRIVE

TORONTO • ON



THE **domo** CENTRE

DRAWING:

**SUITE 305**

GROSS SQUARE FEET:

**3,053 SF**

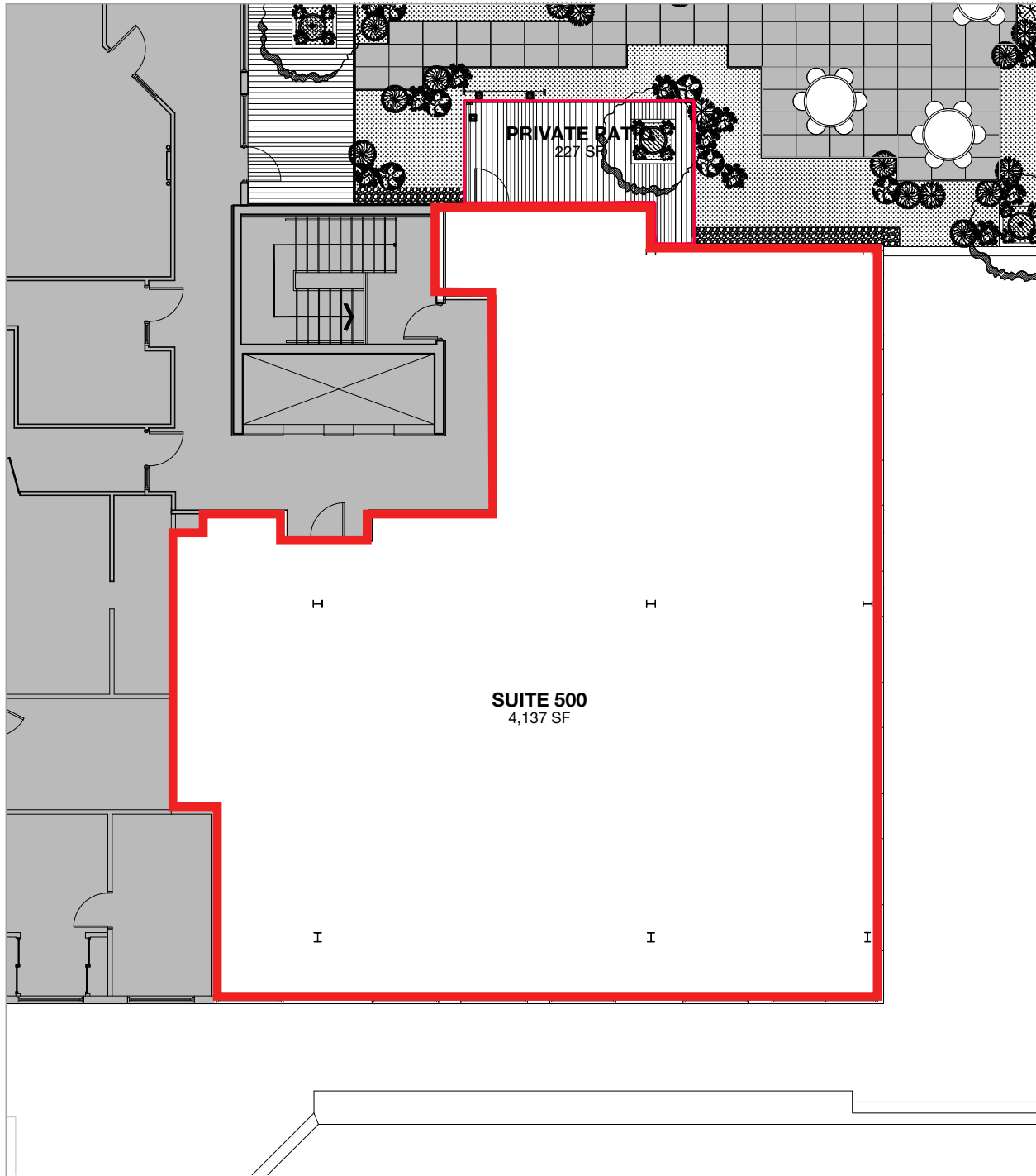
SCALE:

**1:150**



# 20 DE BOERS DRIVE

TORONTO • ON



THE **domo** CENTRE

DRAWING:  
**SUITE 500**

GROSS SQUARE FEET:  
**4,137 SF**

SCALE:  
**1:150**

**CBRE**

# 20 DE BOERS DRIVE

TORONTO • ON



ADDITIONAL PHOTOS

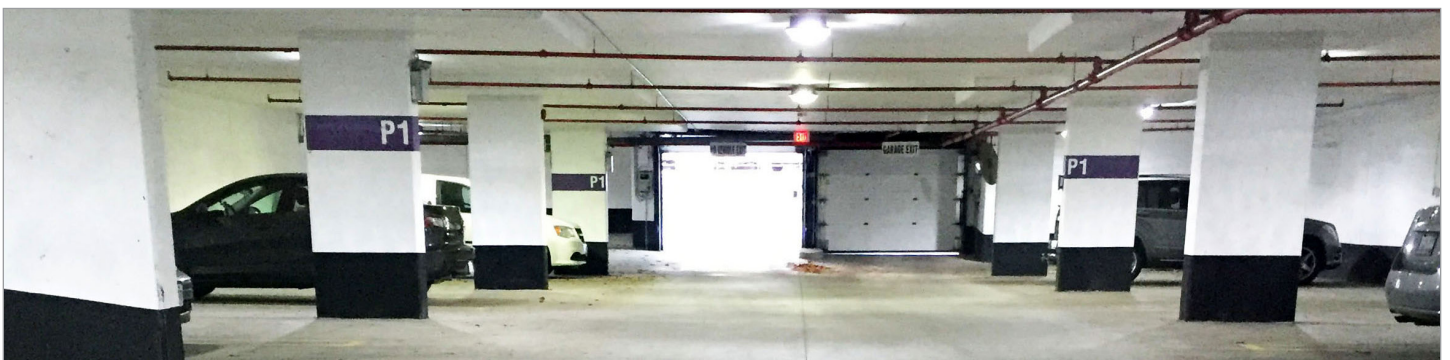


# 20 DE BOERS DRIVE

TORONTO • ON



## ADDITIONAL PHOTOS



# 20 DE BOERS DRIVE

TORONTO • ON



SHEPPARD AVE W



ALLEN RD



Please visit our website at:  
[www.domocentre.ca](http://www.domocentre.ca)

For further information, please contact:

**Terry Di Felice\***, MBA

Senior Vice President

416 495 6209

[terry.difelice@cbre.com](mailto:terry.difelice@cbre.com)

**Markus Miller**

Sales Representative

416 495 6221

[markus.miller@cbre.com](mailto:markus.miller@cbre.com)

**CBRE Limited**  
2055 Sheppard Avenue East,  
Suite 800,  
Toronto, ON M2J 5B4

**CBRE**

\*Sales Representative | April 2019. This disclaimer shall apply to CBRE Limited, Real Estate Brokerage, and to all other divisions of the Corporation; to include all employees and independent contractors ("CBRE"). The information set out herein, including, without limitation, any projections, images, opinions, assumptions and estimates obtained from third parties (the "Information") has not been verified by CBRE, and CBRE does not represent, warrant or guarantee the accuracy, correctness and completeness of the Information. CBRE does not accept or assume any responsibility or liability, direct or consequential, for the Information or the recipient's reliance upon the Information. The recipient of the Information should take such steps as the recipient may deem necessary to verify the Information prior to placing any reliance upon the Information. The Information may change and any property described in the Information may be withdrawn from the market at any time without notice or obligation to the recipient from CBRE. CBRE and the CBRE logo are the service marks of CBRE Limited and/or its affiliated or related companies in other countries. All other marks displayed on this document are the property of their respective owners. All Rights Reserved. Mapping Sources: Canadian Mapping Services [canadamapping@cbre.com](http://canadamapping@cbre.com); MapPoint, DMTI Spatial, EnviroNics Analytics, Microsoft Bing, Google Earth

# 20 DE BOERS DRIVE

TORONTO • ON



## ADDITIONAL PHOTOS

