

Rare Flagship Opportunity in Fisherman's Wharf

29,756 SF On 3 Levels



FOR LEASE

211 Jefferson St, San Francisco, CA



Fisherman's Wharf Flagship Opportunity

211 Jefferson St, San Francisco, CA



JEFFERSON STREET VIEW



TAYLOR STREET VIEW



**JOIN RAISING CANE'S FUTURE FLAGSHIP LOCATION
OPENING SUMMER 2026**

29,765 SF

Space (demisable)

Contact Broker

Rent

ABOUT THE PROPERTY

- Located on Jefferson St in the heart of Fisherman's Wharf between Pier 39 & Ghirardelli Square.
- 29,756 SF (demisable) available on 3 levels.
 - Ground: 1,687 SF - 6,927 SF
 - 2nd Level: 12,072 SF
 - 3rd Level: 10,766 SF plus patio space
- Showing by appointment only. Please do not disturb tenant.
- Looking for F&B, Entertainment or Tourist Attraction concepts.

NEARBY RETAILERS, ATTRACTIONS & HOTELS

PIER 39

Ghirardelli
SQUARE



BOUDIN | SF

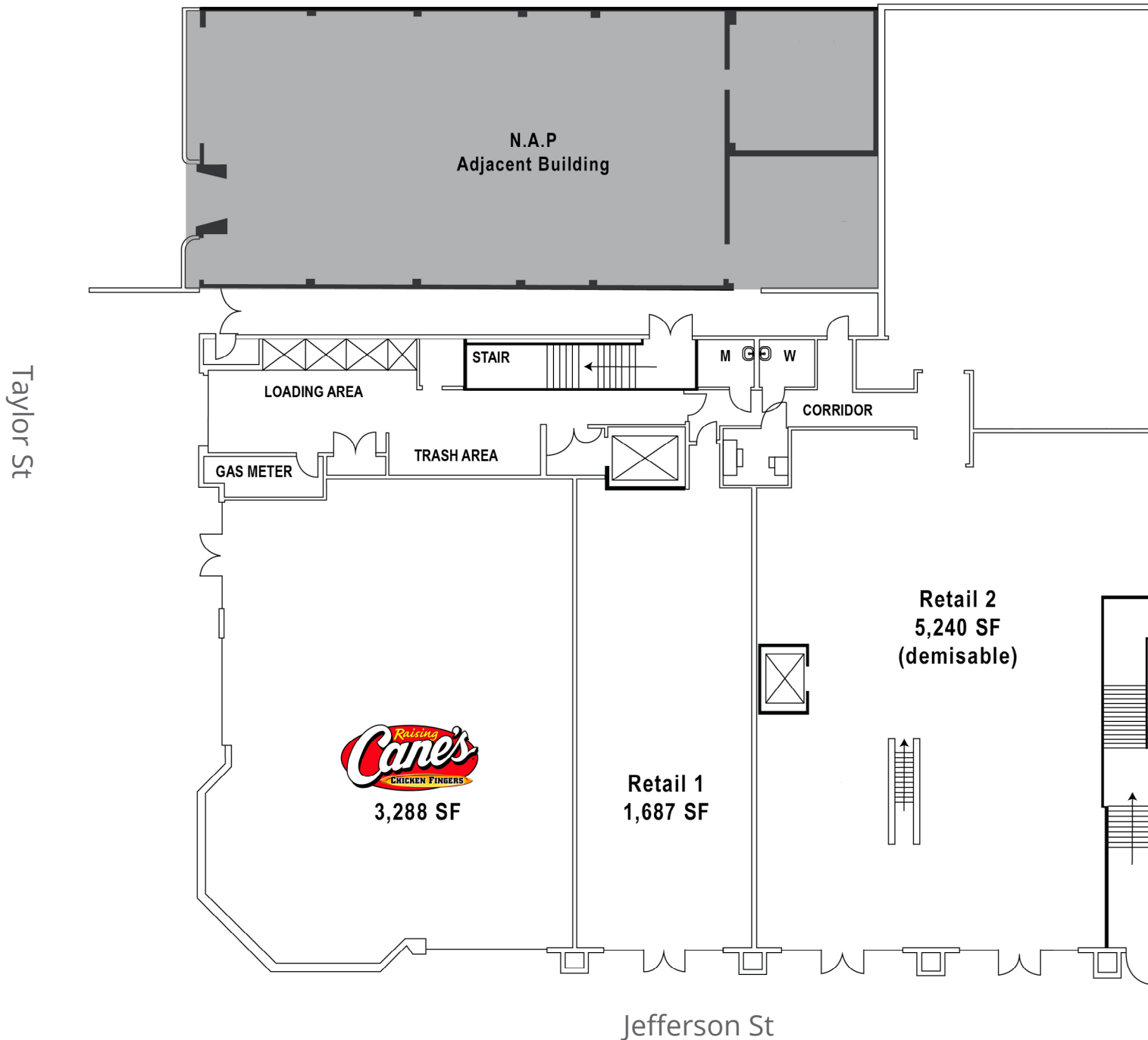


COURTYARD
BY MARRIOTT



Ground Floor Plan

211 Jefferson St, San Francisco, CA



2nd Floor Plan

211 Jefferson St, San Francisco, CA



Taylor St



SECOND FLOOR
12,072 SF

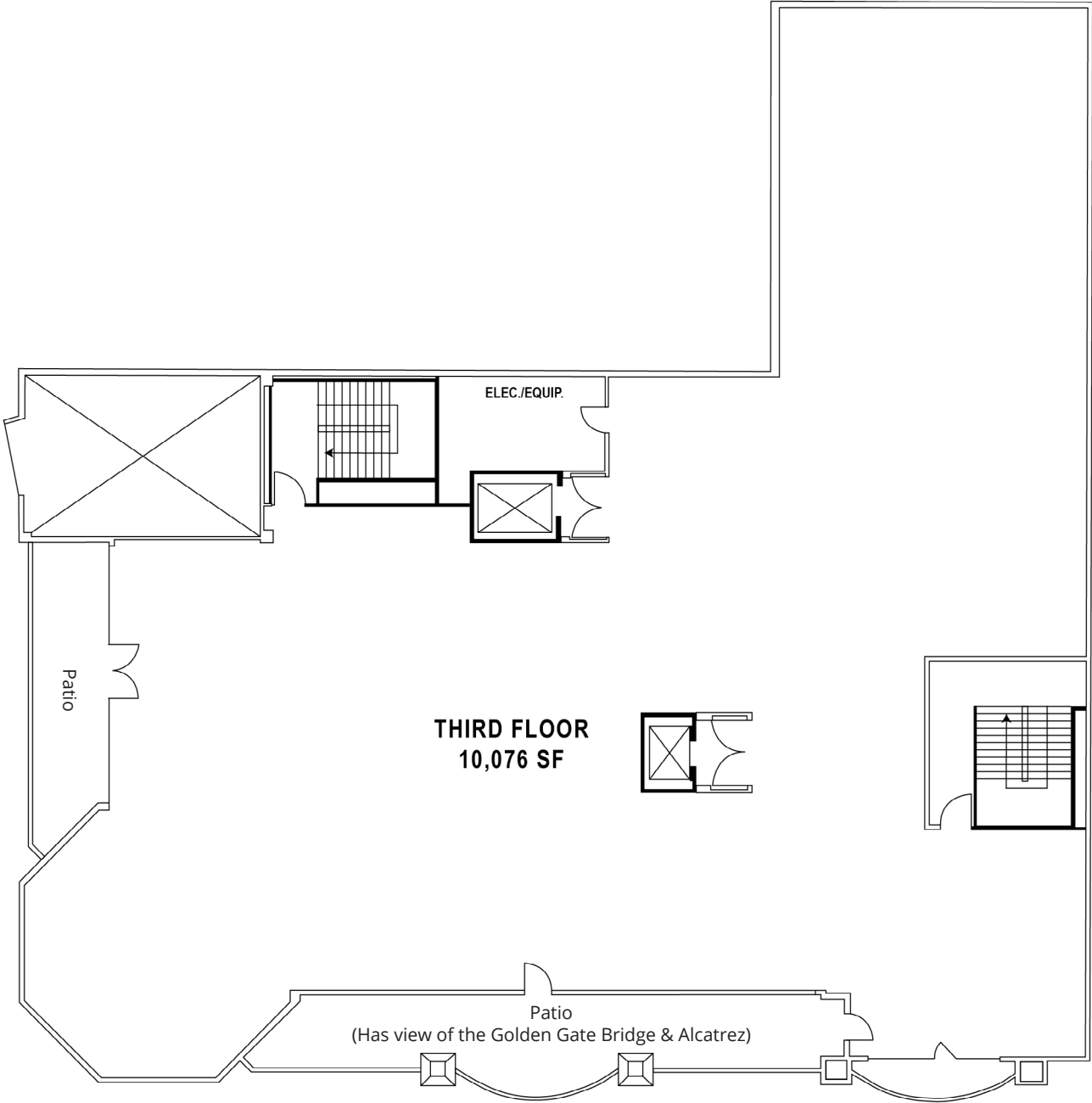
Jefferson St

3rd Floor Plan

211 Jefferson St, San Francisco, CA



Taylor St



THIRD FLOOR
10,076 SF

Jefferson St

Fisherman's Wharf Retail

211 Jefferson St, San Francisco, CA



Fisherman's Wharf Retail

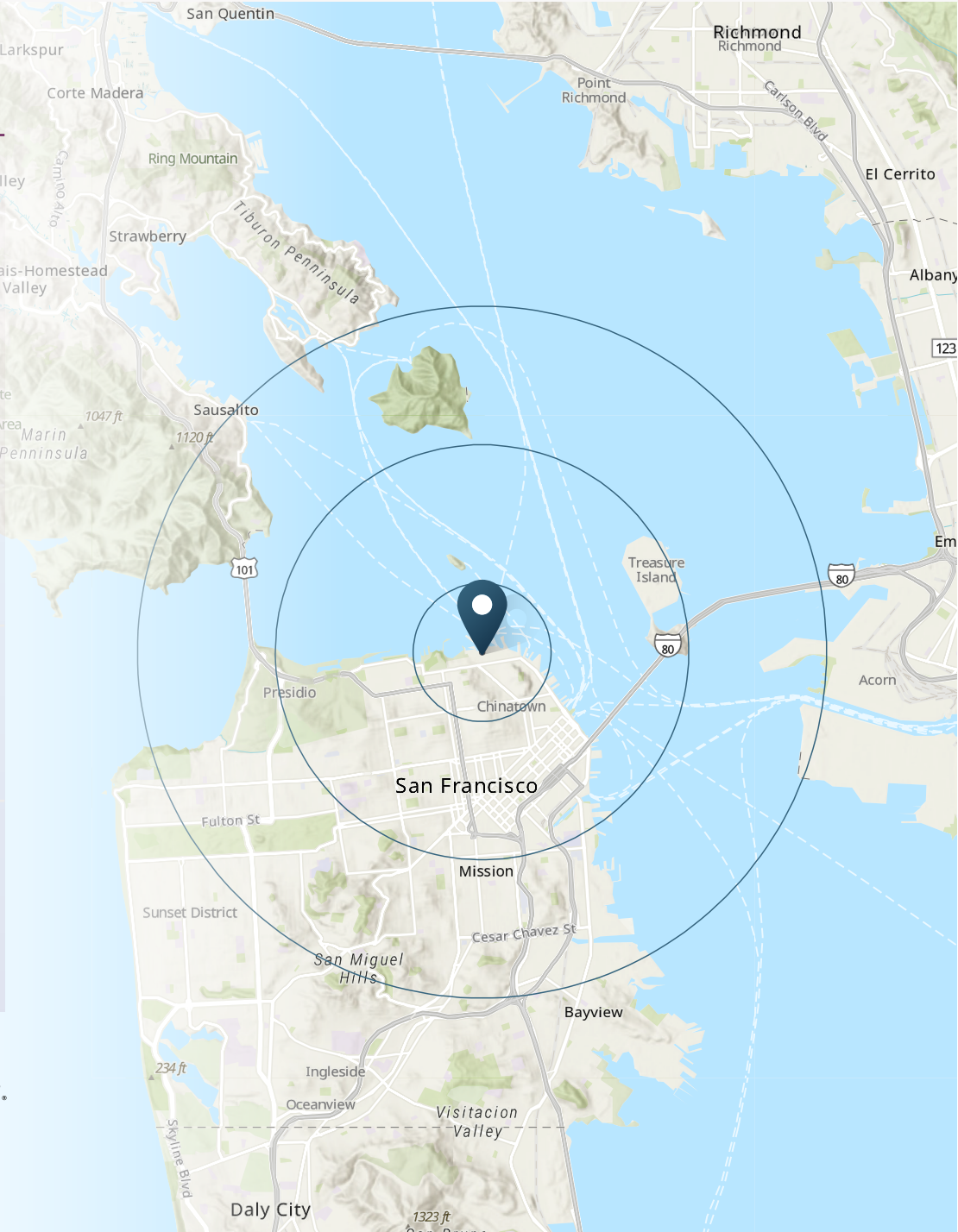
211 Jefferson St, San Francisco, CA



DEMOGRAPHIC HIGHLIGHTS

Population	1 Mile	3 Miles	5 Miles
2024 Estimated Population	49,698	321,813	563,187
2029 Projected Population	49,932	331,458	575,143
Projected Annual Growth 2024 to 2029	0.09%	0.59%	0.42%
2024 Daytime Population			
Daytime Population	62,446	610,402	864,317
Workers	47,078	509,173	686,324
Residents	15,368	101,229	177,993
2024 Income			
Average Household Income	\$195,662	\$194,344	\$208,552
Median Household Income	\$127,285	\$131,686	\$151,511
Households & Growth			
2024 Estimated Households	26,861	169,568	276,448
2029 Projected Households	27,014	174,609	282,453
Projected Annual Growth 2024 to 2029	0.12%	0.67%	0.43%
2024 Race & Ethnicity			
White	48.82%	44.96%	46.81%
Black or African American	1.85%	6.14%	4.75%
Asian or Pacific Islander	38.68%	31.38%	29.14%
Other Race	2.49%	6.72%	7.47%
Two or More Races	7.75%	9.68%	10.76%
Hispanic	7.51%	13.48%	15.01%

> **Want more?** Contact us for a complete demographic, foot-traffic, and mobile data insights report.





SRS Real Estate Partners
San Francisco
150 California St, 14th Fl
San Francisco, CA 94111
415.908.4930

Donald Edrington

EVP & Principal
415.908.4933
donald.edrington@srsre.com
CA License No. 02195092

Savannah Guel

Associate
415.908.4941
savannah.guel@srsre.com
CA License No. 02201877

SRSRE.COM

© SRS Real Estate Partners

The information presented was obtained from sources deemed reliable;
however SRS Real Estate Partners does not guarantee its completeness or accuracy.