



424 TREAT AVENUE

Suite B | 3,800 RSF

Term Through January 15, 2027

JACK NELSON

jack.nelson@jll.com

503 819 7661

CA License #: 02026112

 **JLL** SEE A BRIGHTER WAY

BRITTAN HAWKEN

brittan.hawken@jll.com

310 344 2554

CA License #: 01963161

ELIZABETH CHEN

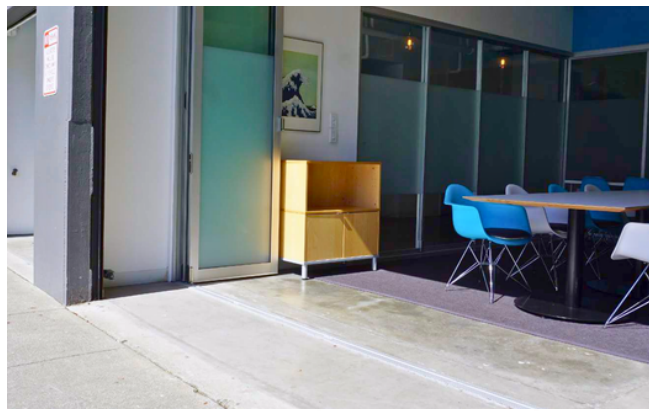
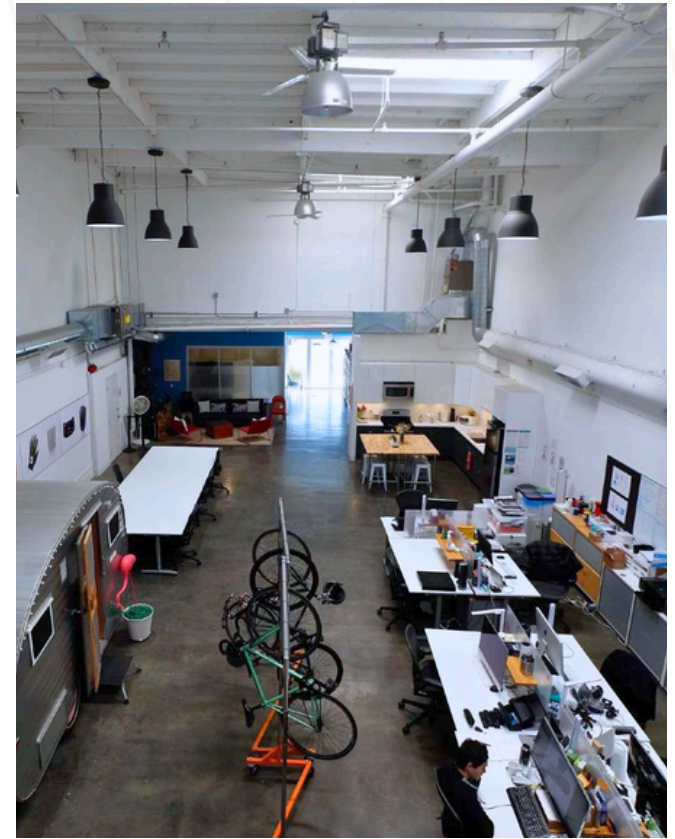
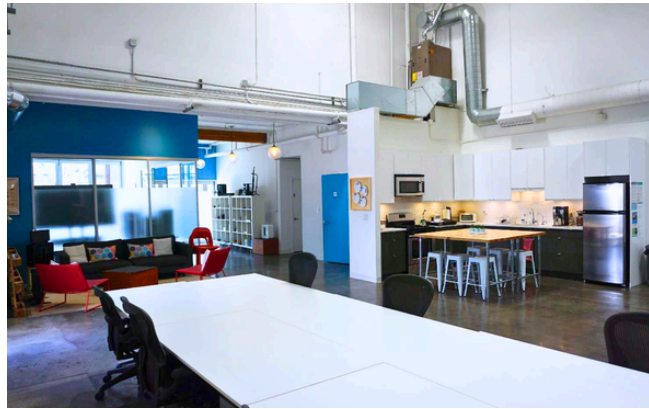
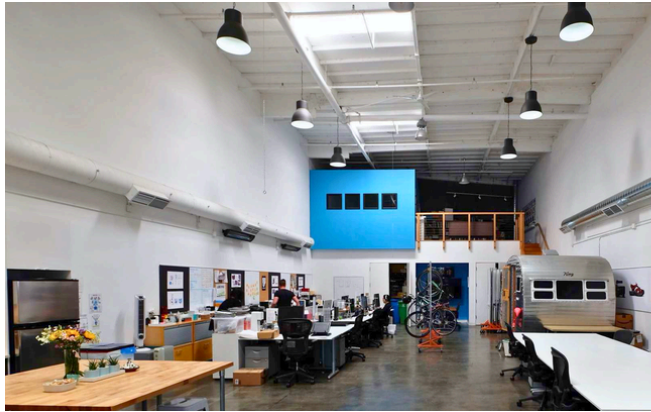
elizabeth.chen@jll.com

610 500 9949

CA License #: 02336645

424 TREAT AVENUE

Suite B | 3,800 RSF



SPACE DETAILS :

- Creative flex space
- Ground floor with 2 large drive in doors
- High ceilings
- 2 Conference rooms
- 1 Meeting room
- Lab/shop room
- Full kitchen
- 2 Parking spaces
- Furniture can be made available
- Term thru January 15, 2027

JACK NELSON
jack.nelson@jll.com
503 819 7661
CA License #: 02026112

BRITTAN HAWKEN
brittan.hawken@jll.com
310 344 2554
CA License #: 01963161

ELIZABETH CHEN
elizabeth.chen@jll.com
610 500 9949
CA License #: 02336645



SEE A BRIGHTER WAY