

# SALE

## FREESTANDING RESTAURANT

3605 Hwy 90 Pace, FL 32571



### PROPERTY DESCRIPTION

Freestanding Restaurant in Pace, FL Available for Lease. Located just past the intersection of US Hwy 90 and Woodbine Rd, this location is the first restaurant on the east bound side of the Hwy as you enter into Pace. AADT of 35,000 with 150 Ft of Hwy Rd Frontage along with a Full Median Cut on US Hwy 90. 5 Mile Demographics include a Total Population of 49,065 and Average House Hold Income of \$106,257.

### PROPERTY HIGHLIGHTS

- Freestanding. Full Median Cut. AADT of 35,000

### OFFERING SUMMARY

Sale Price:	\$850,000
Lot Size:	0.86 Acres

DEMOGRAPHICS	1 MILE	3 MILES	5 MILES
Total Households	654	5,715	17,191
Total Population	2,023	16,024	49,065
Average HH Income	\$88,957	\$103,192	\$106,257

**Melissa Glyptis Simpson**  
(850) 733-6532



**COLDWELL BANKER**  
**COMMERCIAL**  
REALTY

# SALE

# FLOORPLAN

3605 Hwy 90 Pace, FL 32571

Main Floor Finished Area 3445.71 sq ft



**Melissa Glyptis Simpson**  
(850) 733-6532

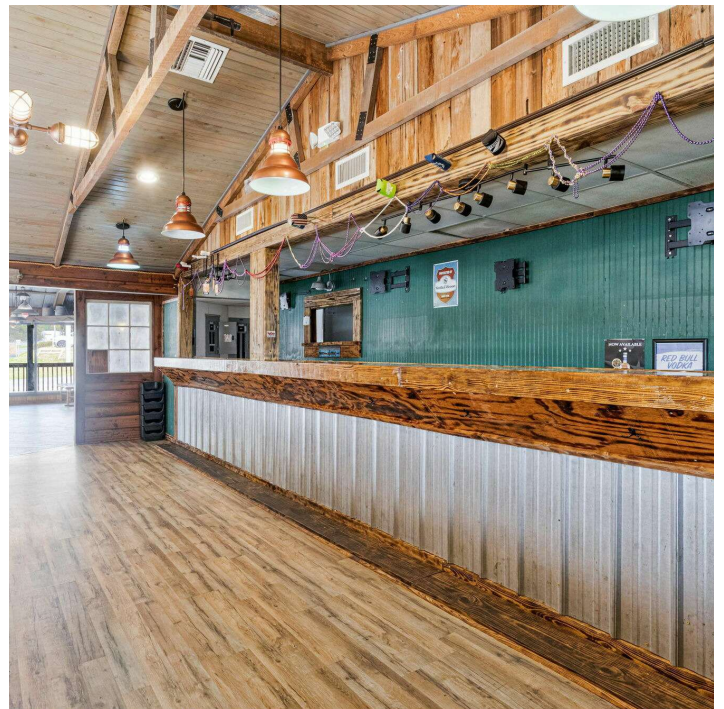
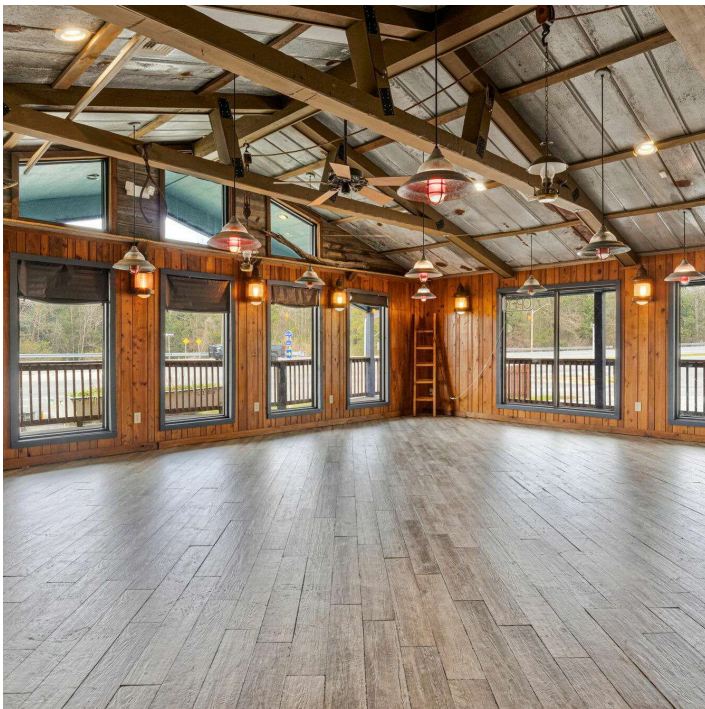


**COLDWELL BANKER**  
**COMMERCIAL**  
REALTY

# SALE

## ADDITIONAL PHOTOS

3605 Hwy 90 Pace, FL 32571



**Melissa Glyptis Simpson**  
(850) 733-6532



**COLDWELL BANKER**  
**COMMERCIAL**  
REALTY

# SALE

## RETAILER LOCATION MAP

3605 Hwy 90 Pace, FL 32571



**Melissa Glyptis Simpson**  
(850) 733-6532

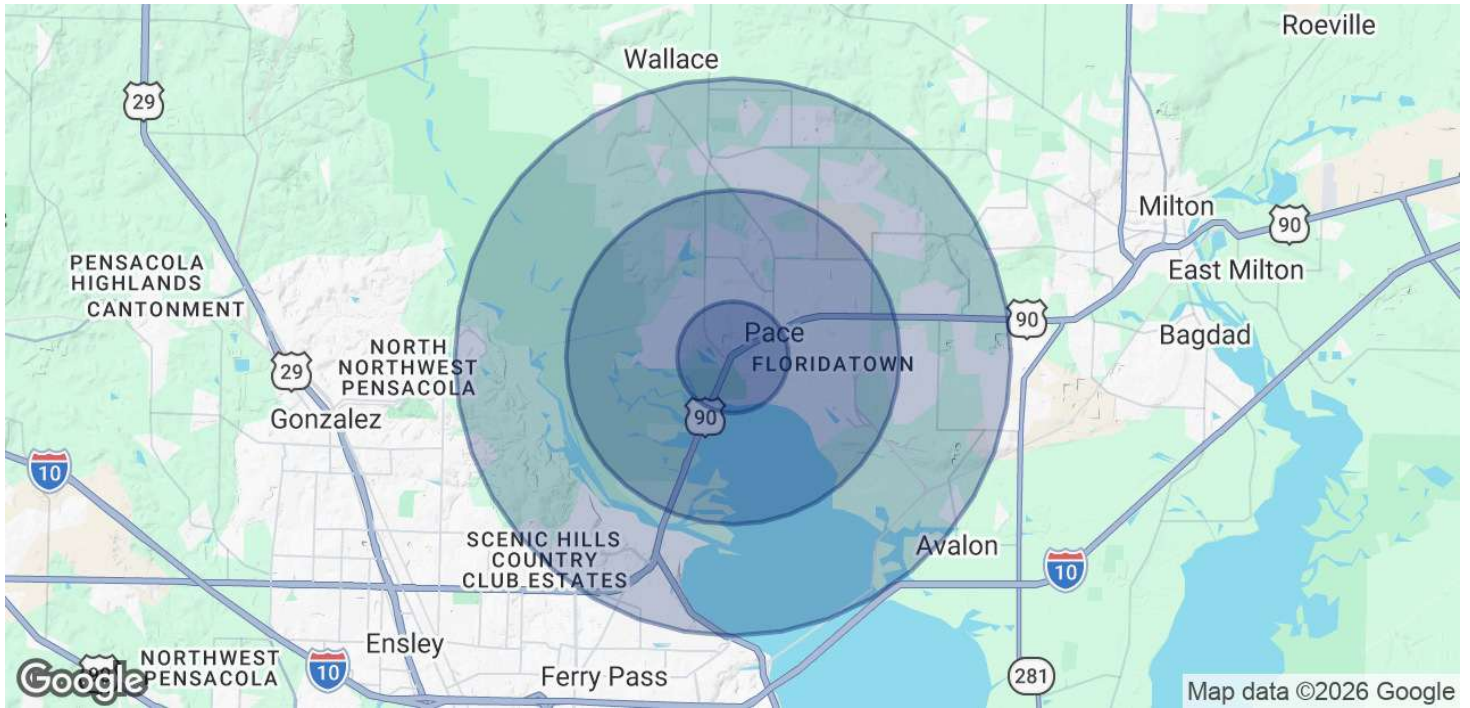


**COLDWELL BANKER  
COMMERCIAL  
REALTY**

# SALE

## DEMOGRAPHICS

3605 Hwy 90 Pace, FL 32571



<b>POPULATION</b>	<b>1 MILE</b>	<b>3 MILES</b>	<b>5 MILES</b>
Total Population	2,023	16,024	49,065
Average Age	36.3	37.6	37.3
Average Age (Male)	34	37.8	36.6
Average Age (Female)	38.9	36.4	38

<b>HOUSEHOLDS &amp; INCOME</b>	<b>1 MILE</b>	<b>3 MILES</b>	<b>5 MILES</b>
Total Households	654	5,715	17,191
# of Persons per HH	3.1	2.8	2.9
Average HH Income	\$88,957	\$103,192	\$106,257
Average House Value	\$216,549	\$260,028	\$283,953

2023 American Community Survey (ACS)

**Melissa Glyptis Simpson**  
(850) 733-6532



**COLDWELL BANKER  
COMMERCIAL  
REALTY**