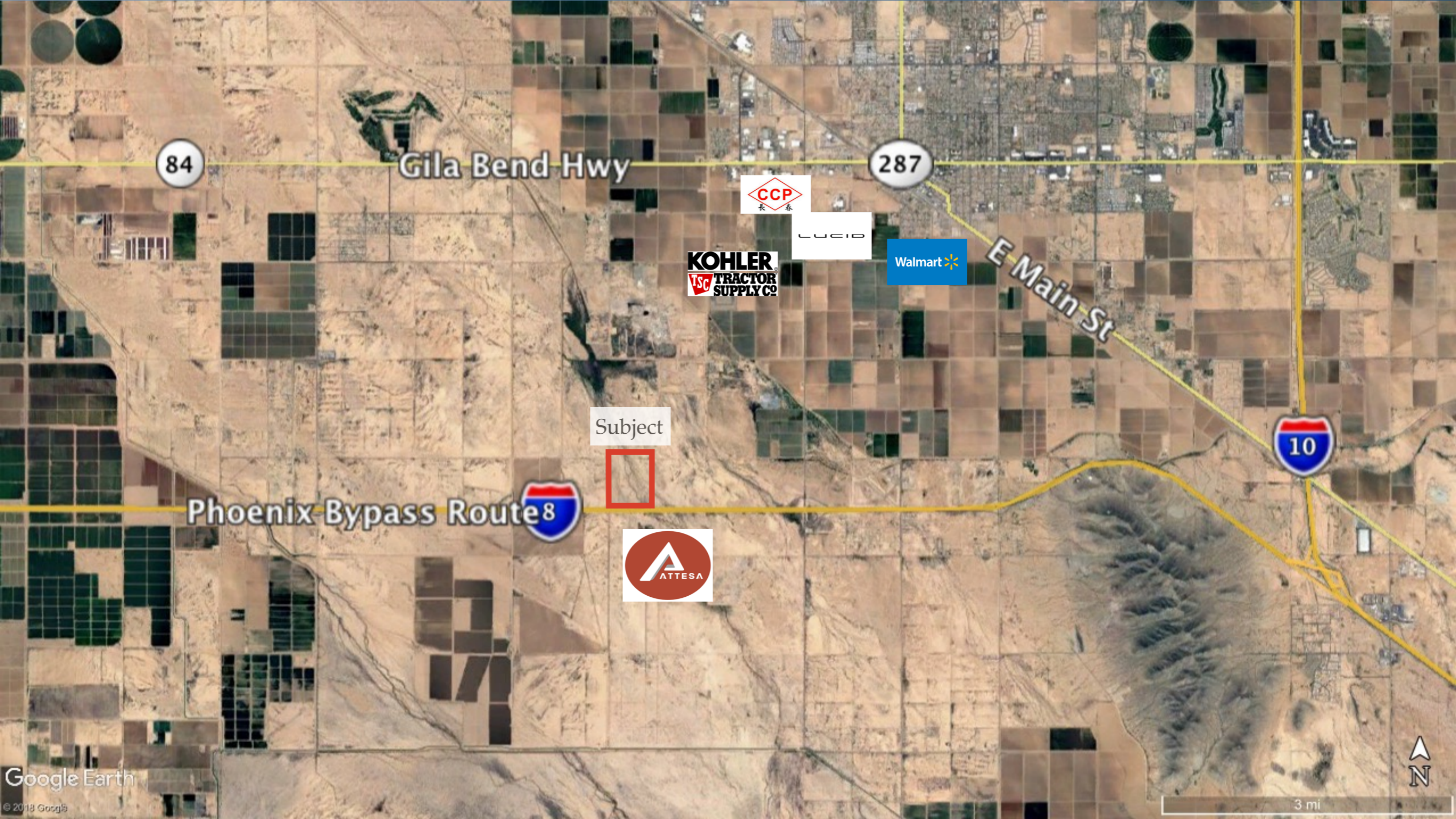


# Baseball Park Estates

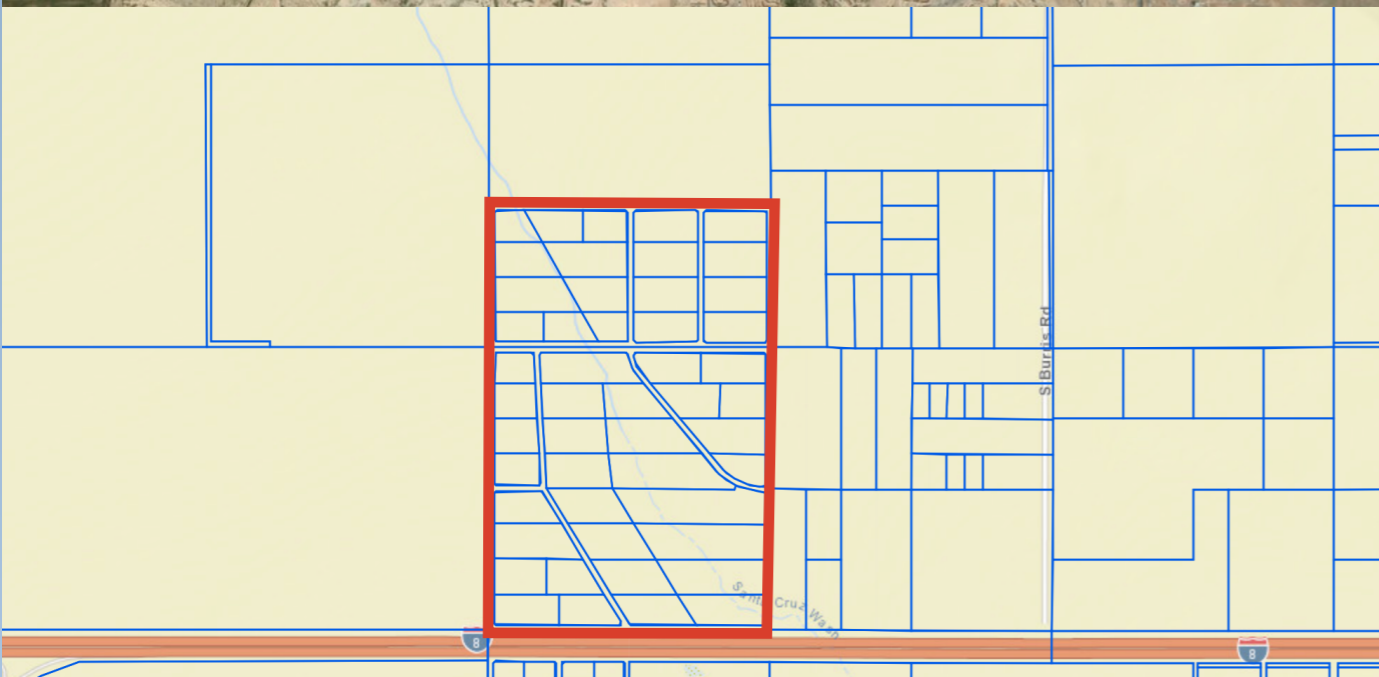
I-8 in Pinal County

Exclusively Listed By:  
W. Brian Hanger  
2727 W. Frye Rd Ste 220  
Chandler, AZ 85224  
Phone (480) 857-9101  
Fax (480) 857-9102



Google Earth  
© 2018 Google





- ❖ 202 +/- Acres
- ❖ NWC of I-8 and Ethington Rd.
- ❖ Freeway Frontage
- ❖ Raw Land
- ❖ Investment Opportunity
- ❖ Located close to major production / distribution facilities such as Lucid Motors, Kohler, Chang Chun Group (CCP), Walmart, and Tractor Supply Co
- ❖ Located in flood zone AE
- ❖ List Price: \$5,800 / Acre

# Parcel Map 1

## SEC. 2 S/2, SW, TN.7S RG.5E

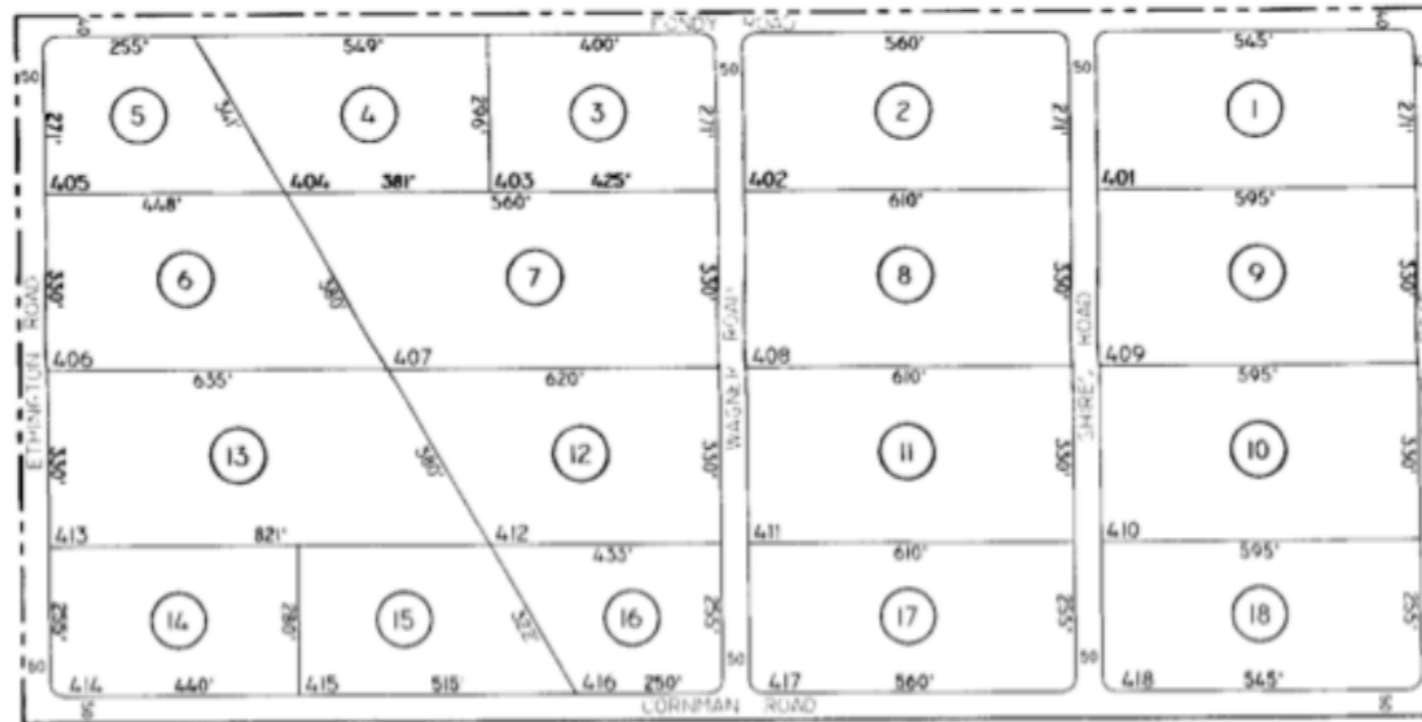
THIS MAP IS FOR TAX PURPOSES ONLY.  
THIS OFFICE WILL NOT ASSUME LIABILITY FOR  
REPRESENTATION, MEASUREMENTS OR ACREAGE.

THE ORIGINAL PLAT OF THIS SUBDIVISION IS  
ON FILE WITH THE PINAL COUNTY RECORDERS  
OFFICE, FOR COMPLETE INFORMATION OF PLAT  
AND CCARs CALL (520) 946-7100.

# 511-04

**BASEBALL PARK ESTATES  
UNIT 4  
BK.10 - PG.14**

SEE MAP 511-03



SEE MAP 511-01 1/3

SEE MAP 511-03

SEE MAP 511-10 1/2

### VICINITY MAP

SEC 35, TN.6S RG.5E



SCALE: 1" = 300'

5-7-2001

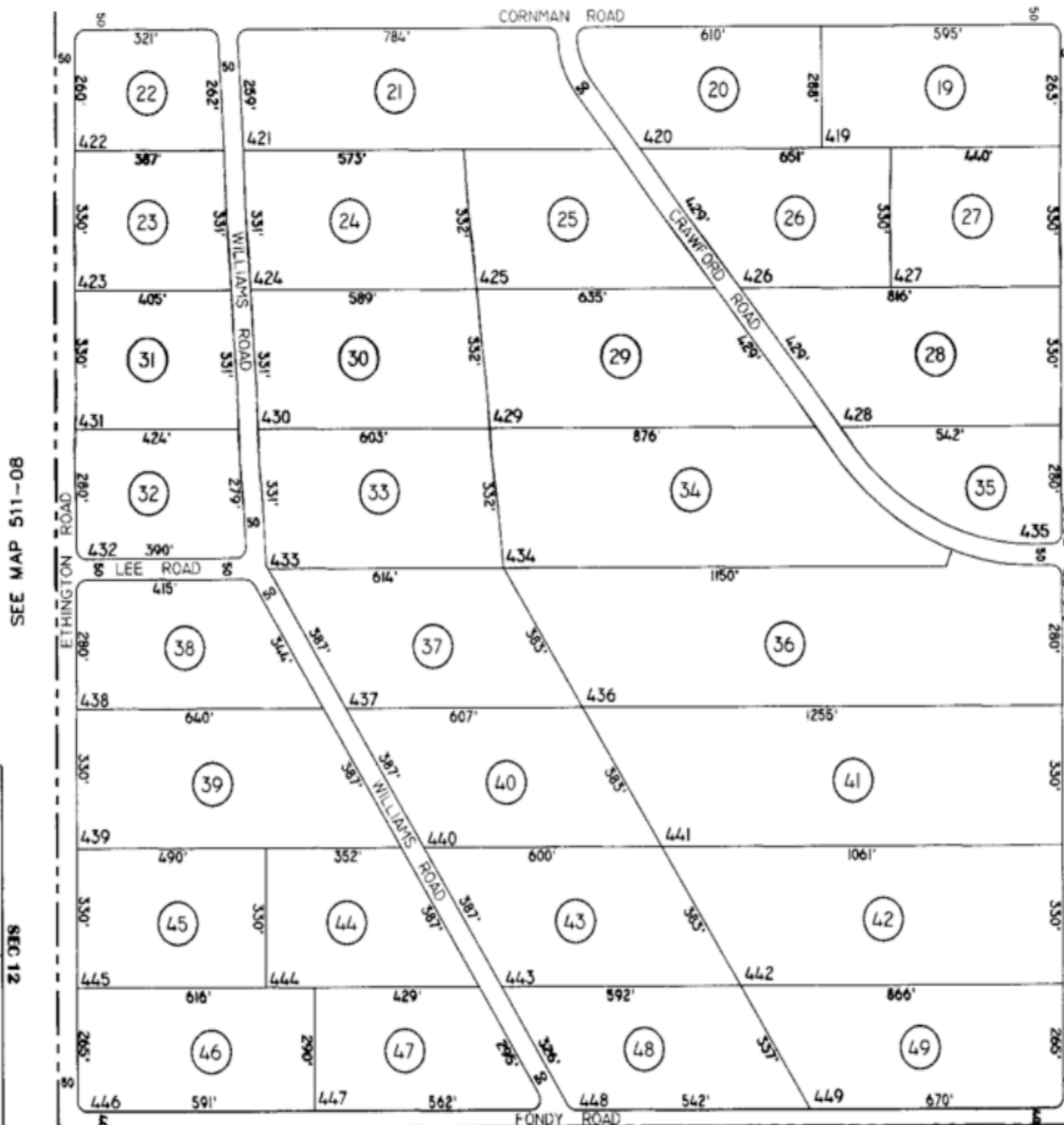
# Parcel Map 2

## SEC. 11 NW, TN.7S RG.5E

THIS MAP IS FOR TAX PURPOSES ONLY.  
THIS OFFICE WILL NOT ASSUME LIABILITY FOR  
REPRESENTATION, MEASUREMENTS OR ACREAGE.

THE ORIGINAL PLAT OF THIS SUBDIVISION IS  
ON FILE WITH THE PINAL COUNTY RECORDERS  
OFFICE, FOR COMPLETE INFORMATION OF PLAT  
AND CCR's CALL (602) 868-7108.

SEE MAP 511-04

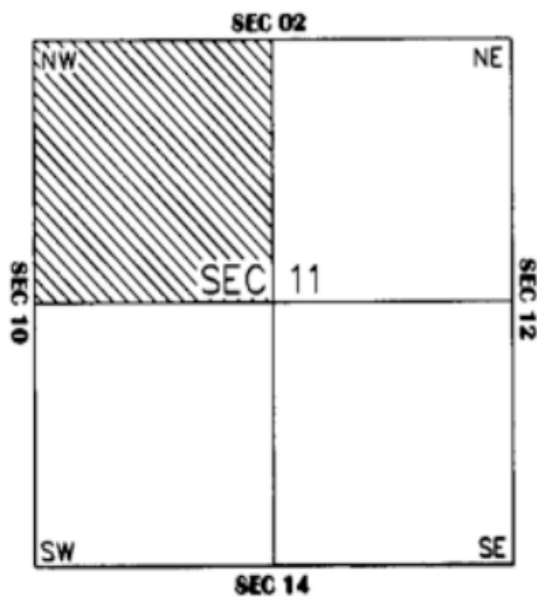


SEE MAP 511-08

SEE MAP 511-09

SEE MAP 511-10 2/2

### VICINITY MAP



# 511-10 1/2

## BASEBALL PARK ESTATES UNIT 4 BK.10 - PG.14



SCALE: 1" = 300'

5-7-2001