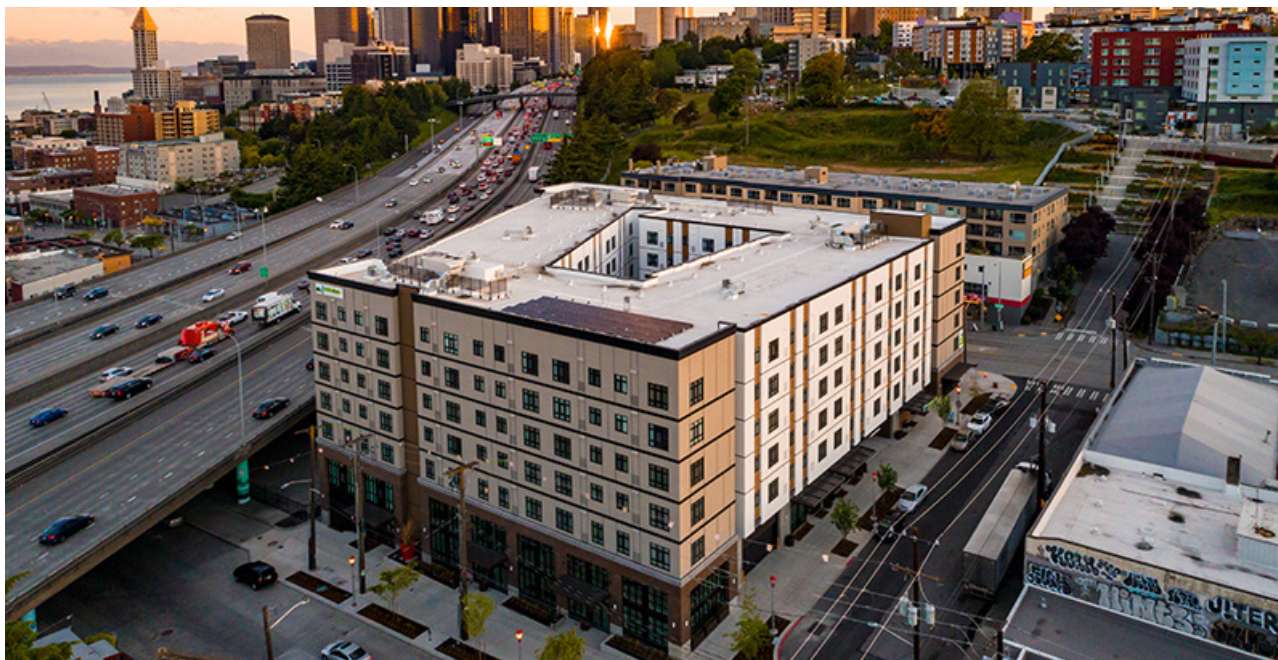


Thai Binh

913 S. Jackson
Seattle WA

Please Contact:
Gloria Touch
206.971.0625
gloria@cannoncommercial.com

cannon
commercial



Availability:

Suite G: approx. 1,309 SF (shaft for restaurant)

Asking Rents: \$25.00 PSF + NNN

NNN: \$8 PSF (estimates only)

Available: Immediately

Apt. Units: 249

Building Tenants:

- Phnom Penh Noodle House
- Phin Vietnamese Cafe
- Alley Tea
- In The Comfort Of
- All State
- AAA

Demographics

	1/2 mile	1 mile	3 miles
Population	12,542	42,779	201,700
Daytime Employees	24,286	131,305	309,979
Avg. HH Income	\$46,817	\$71,216	\$101,934

Highlights

- Within minutes to Pioneer Square and Capitol Hill
- Street car stop located a block to the west of the site
- Steps from Yelser Terrace Redevelopment
- Approximately 45,000 visitors patronize the Chinatown-International District’s cultural institutions annually

100

Transit Score

95

Walk Score

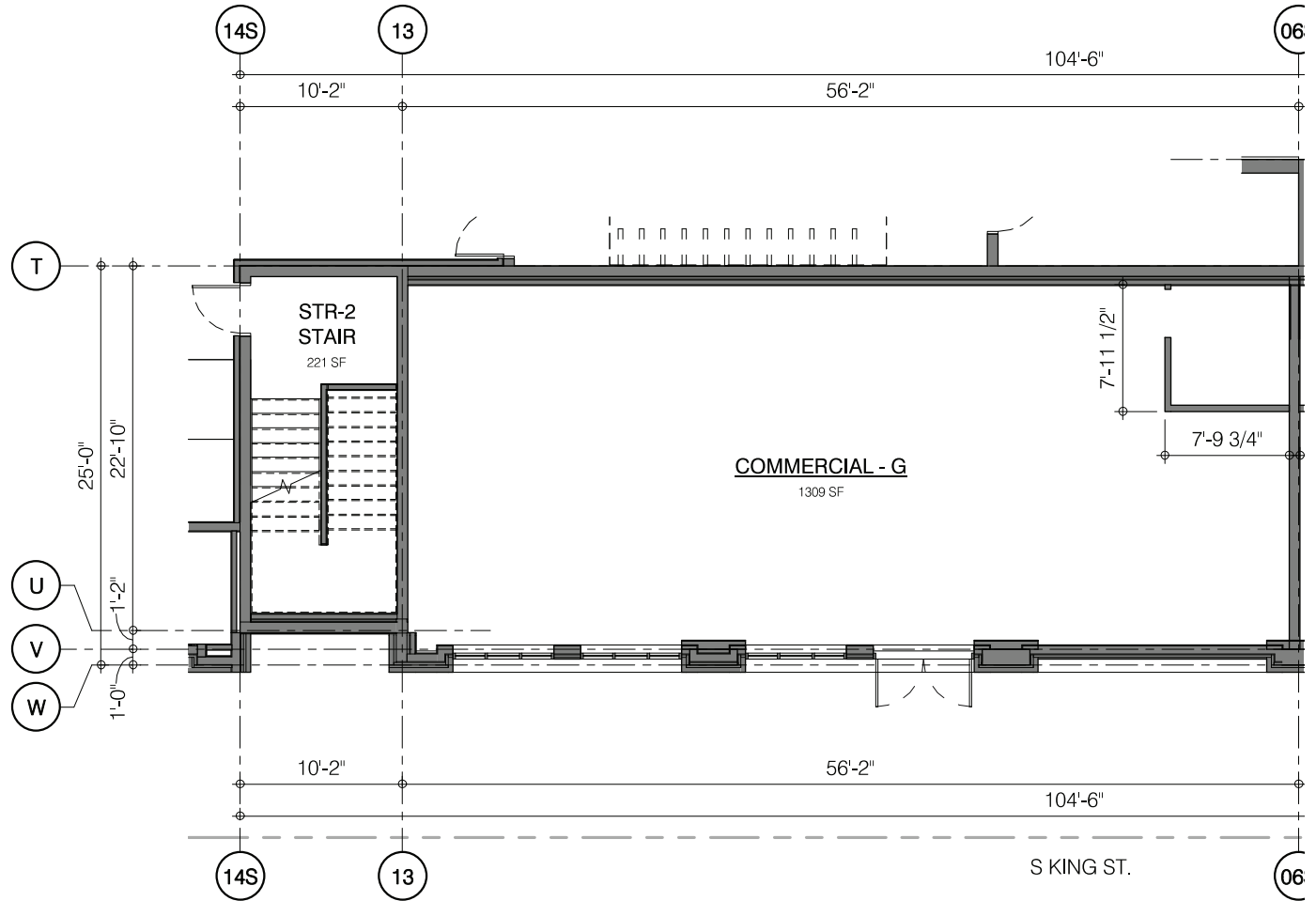
67

Bike Score

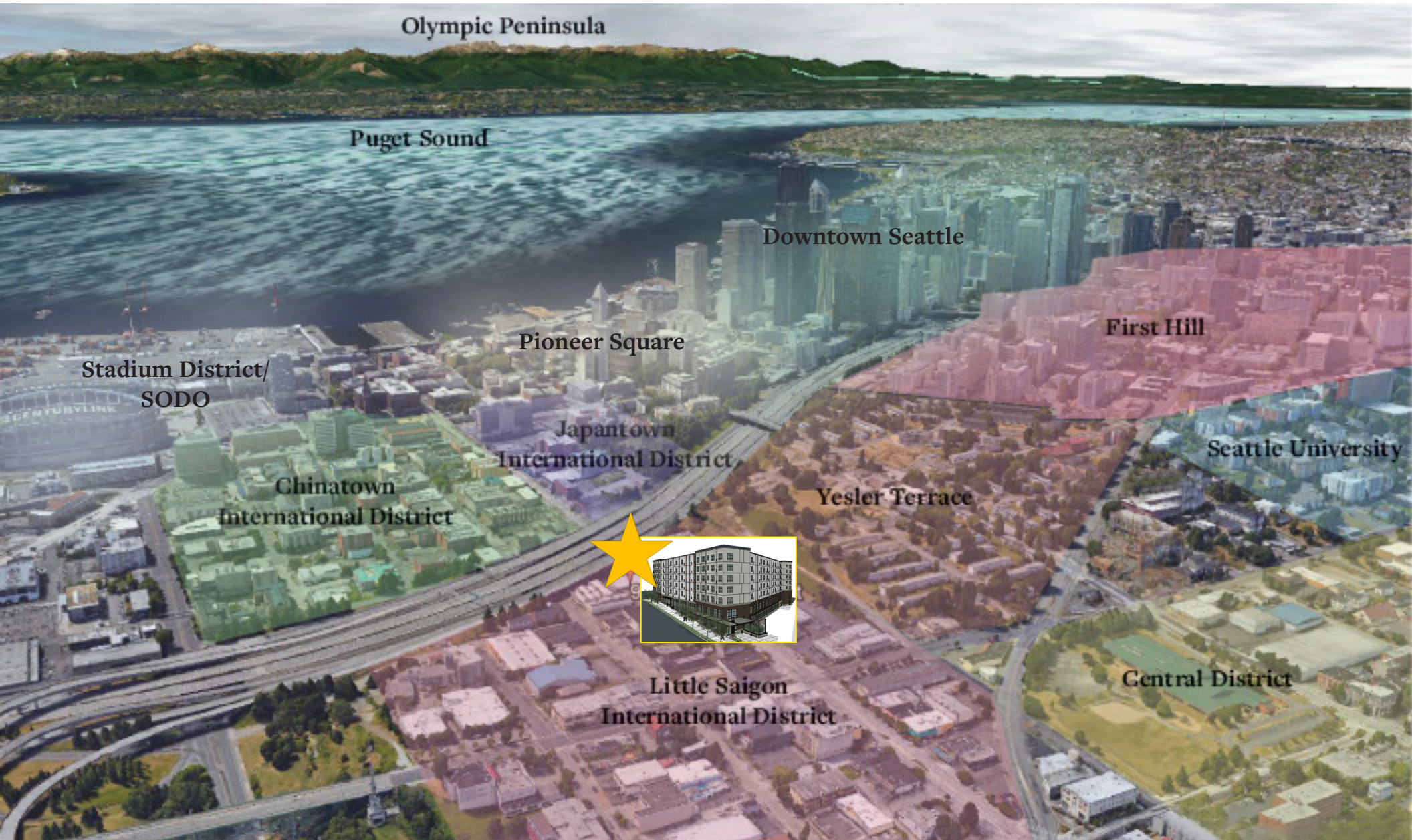
13k

cars per day on
S. Jackson

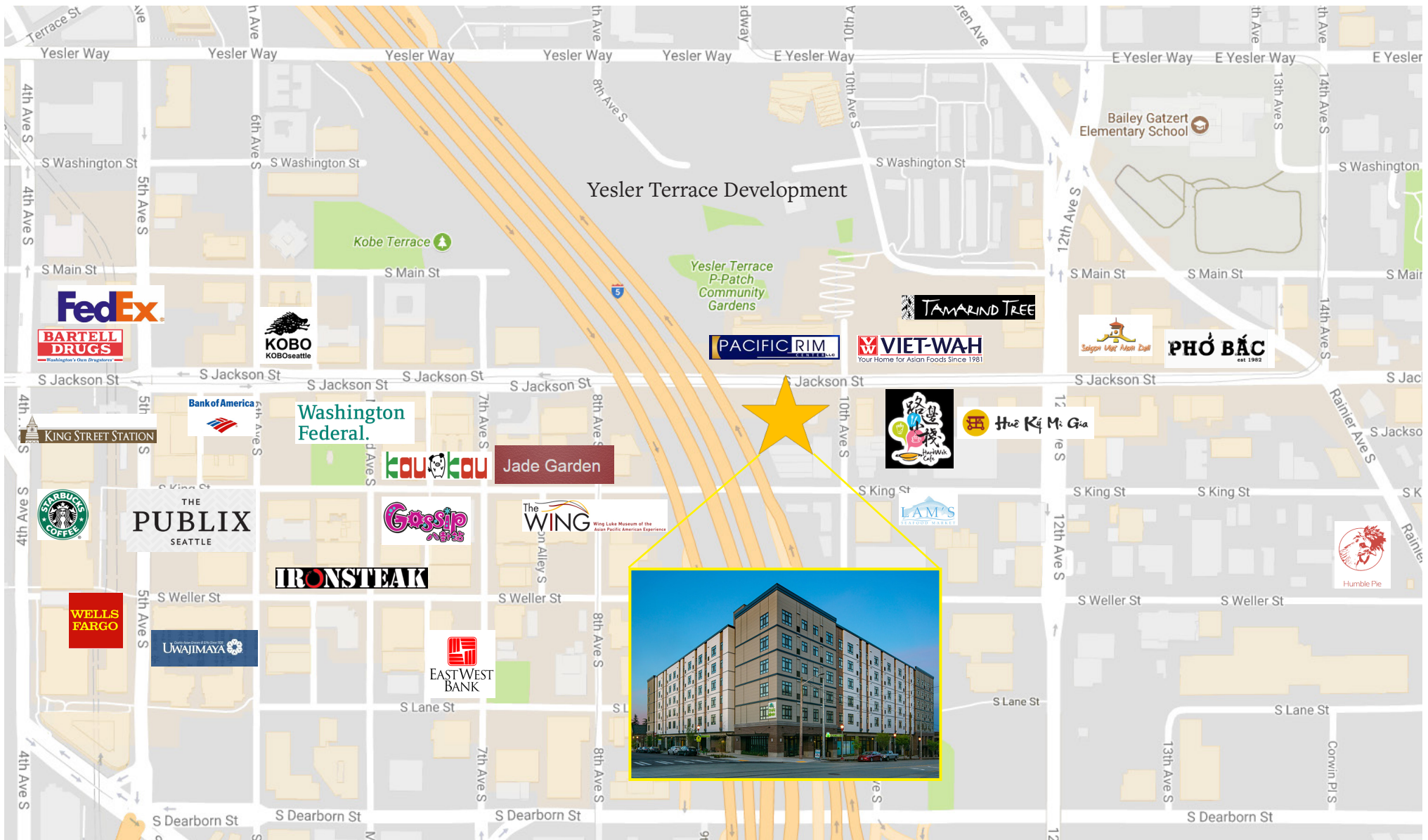
Floor Plan



Neighborhood Map



Amenities Map



For more information, contact:
Gloria Touch
206.971.0625
gloria@cannoncommercial.com

