



Grant - Murray  
REAL ESTATE, LLC  
COMMERCIAL AND INVESTMENT BROKERAGE

150 N. McPherson Church Rd  
Fayetteville, NC 28303  
[www.grantmurrayre.com](http://www.grantmurrayre.com)



OFFICE BUILDING FOR LEASE

## OFFICE BUILDING DOWNTOWN 310 Dick St , Fayetteville, NC 28301

*for more information*

SUSAN EVANS

Broker

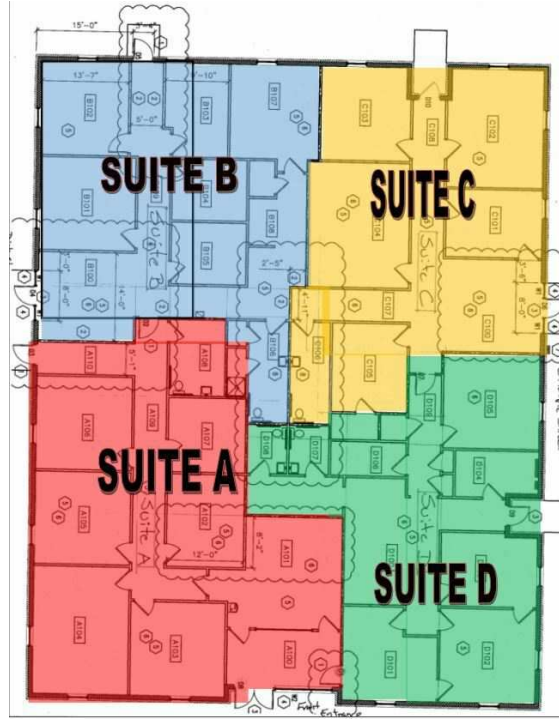
O: 910.829.1617 x208

C: 919.920.2140

[susan@grantmurrayre.com](mailto:susan@grantmurrayre.com)



**EXECUTIVE SUMMARY**



**OFFERING SUMMARY**

**Available SF:** 2,200 SF

**Lease Rate:** \$ 2,900- Suite B

**Lease Type:** Full Service Lease

**Lot Size:** 0.72 Acres

**Building Size:** 8,000

**Zoning:** OI

**Market:** Downtown Fayetteville

**PROPERTY OVERVIEW**

310 Dick Street is a large beautiful brick building located in downtown Fayetteville. This building has recently been remodeled with New Roof, carpet, paint and HVAC. The site has an abundance of parking. It is accessible from Gillespie and Dick Streets. It is located near the courthouse and all downtown amenities. You will be tenants with several government and attorney offices on Dick Street. The building has a total of 4 large private office suites, which can be leased individually or combined. Each suite has their own private entrance, restrooms, etc. The rents include utilities and NNN charges.

**AVAILABLE SPACES**

SPACE	LEASE RATE	SIZE (SF)
310 Dick St - Suite B	\$2,900 per month	2,200 SF

*for more information*

SUSAN EVANS  
 Broker  
 O: 910.829.1617 x208  
 C: 919.920.2140  
 susan@grantmurrayre.com



ADDITIONAL PHOTOS



*for more information*

SUSAN EVANS

Broker

O: 910.829.1617 x208

C: 919.920.2140

[susan@grantmurrayre.com](mailto:susan@grantmurrayre.com)



LOCATION MAPS



for more information

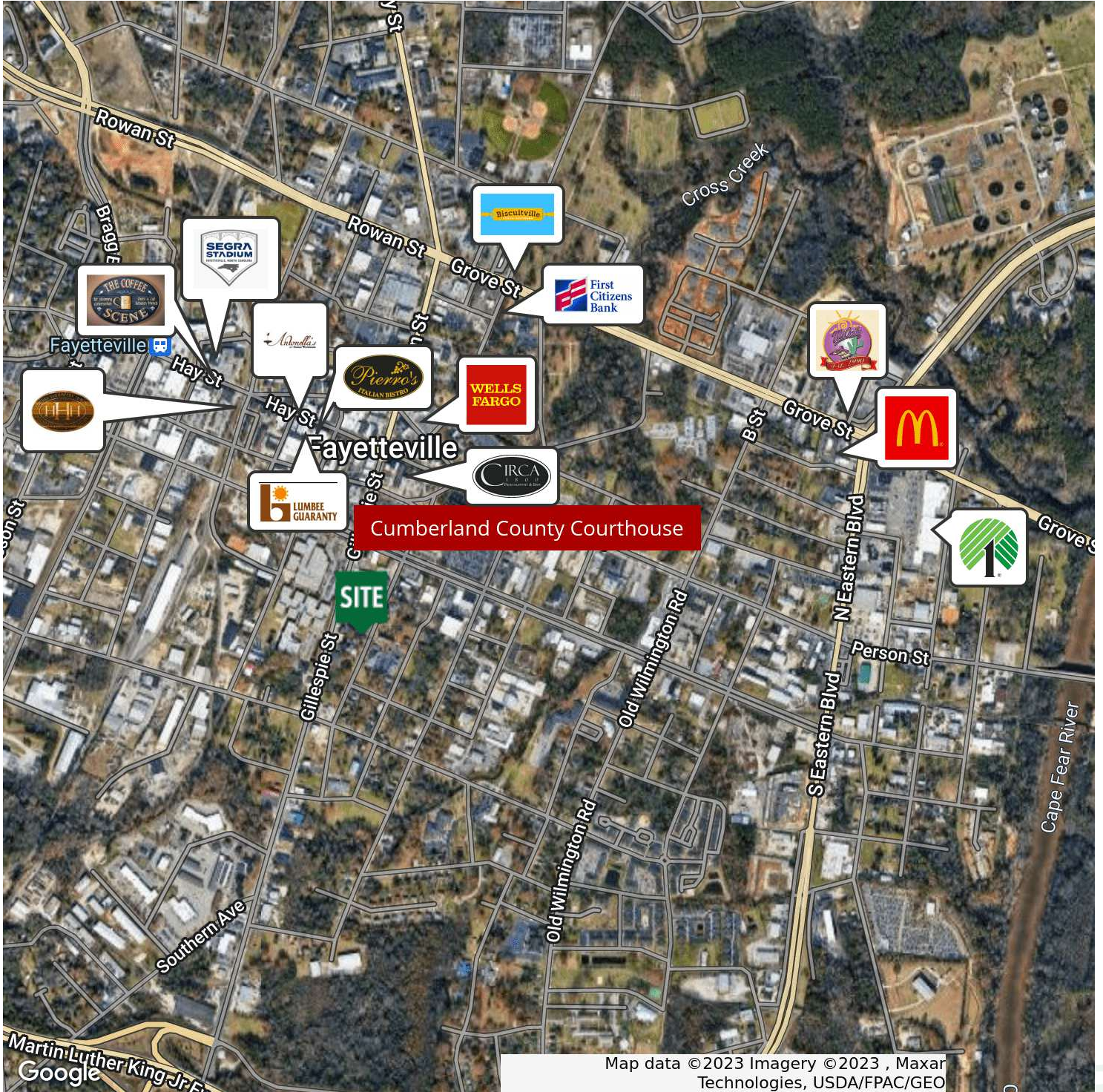
SUSAN EVANS

Broker

O: 910.829.1617 x208

C: 919.920.2140

susan@grantmurrayre.com



Map data ©2023 Imagery ©2023 , Maxar Technologies, USDA/FPAC/GEO

for more information

SUSAN EVANS

Broker

O: 910.829.1617 x208

C: 919.920.2140

susan@grantmurrayre.com