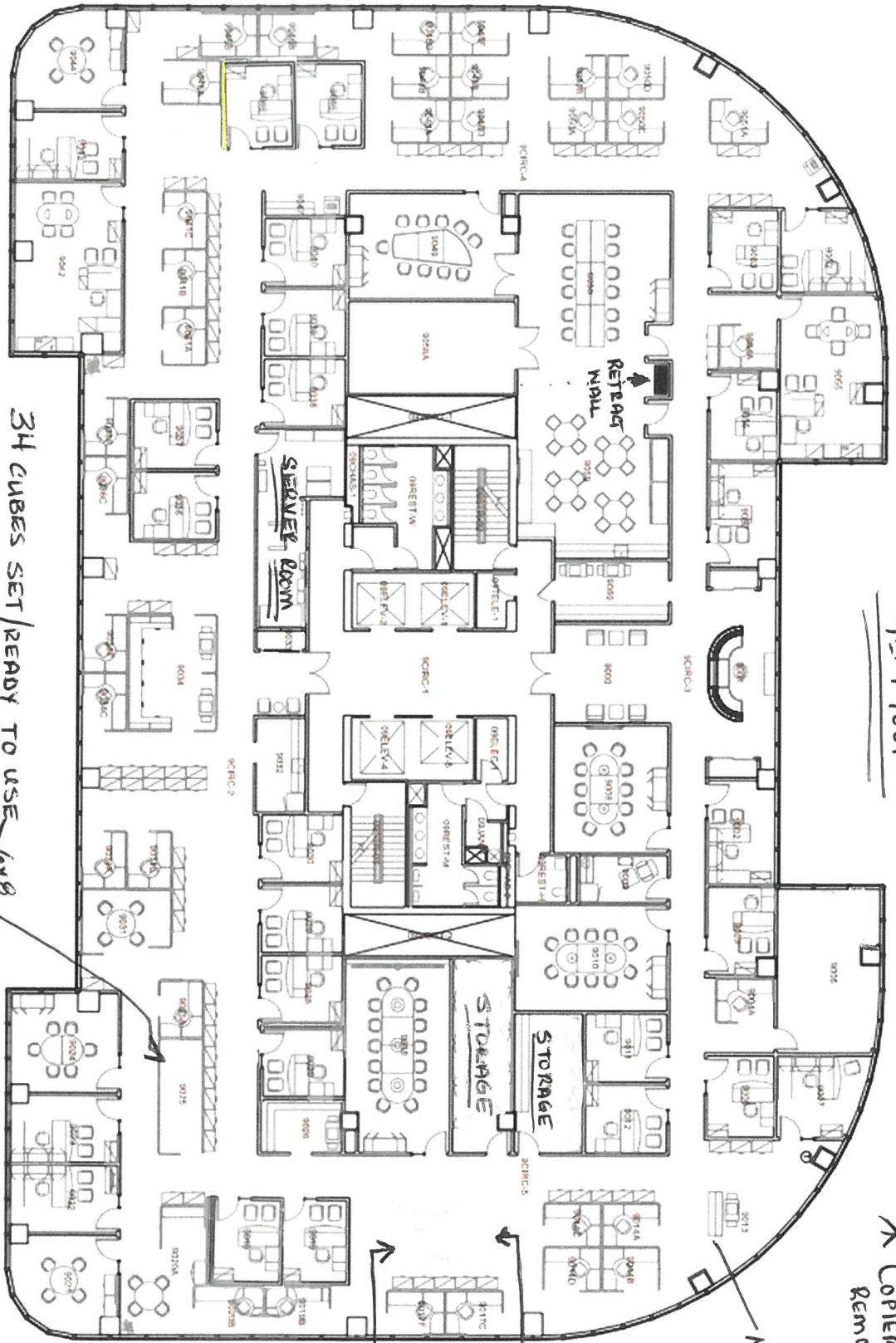


Corp Woods Bldg 32
4th Floor



* COPIERS WILL BE REMOVED.

MAIL STATION

HERE ARE 4 CUBES IN STORAGE TO FILL THIS SPACE

ALL CONFERENCE ROOMS HAVE MATCHING CHAIRS

* OCCUPANT WILL NEED DESK CHAIRS & LARGE KITCHEN/CONF SPACE SEATING.

- 34 CUBES SET/READY TO USE 6x8
- 4 ADDL CUBES STORED
- 19 INSIDE OFFICES 10x12
- 7 WINDOW OFFICES 10x15
- 2 EXEC OFFICERS PLUS 1 NOT FURNISHED

- 1 RECEPTION DESK
- 2 3TON CRAC UNITS
- 1 PRE ACTION FIRE SYSTEM

- 4 RECEPTION CHAIRS
- 1 MOTHER'S ROOM CHAIR w OTTOMAN & SMALL CHAIRSIDE STAND

- 6 ROUND TABLES 42"
- 14 RECTANGULAR 24" x 72"
- IN LARGE KITCHEN & CONF. SPACE