



e spa

For Lease

2311 Jolly Road,
Okemos, MI 48864

Woodland Square

Woodland Square Shopping Center is a ±24,000 SF retail plaza located on Jolly Rd, just west of Okemos Rd and the I-96 interchange. The space offers a diverse tenant mix with high visibility and ample doorstep parking.



Colliers | Lansing
2501 Coolidge Rd, Suite 300
East Lansing, MI 48823
colliers.com/lansing



Amy Richter-Perkins
Associate Vice President
+1 517 614 1314
amy.richter-perkins@colliers.com



Shawn H. O'Brien, CCIM
Senior Vice President
+1 517 303 5554
shawn.obrien@colliers.com





Lease Rate | \$16.00-\$18.00/SF NNN

Suite	SF Available
2325	2,600 SF
2337	2,105 SF

*Owner Can Divide Space



Property Highlights

- › Attractive retail center near several national retailers and restaurants
- › Several new developments and projects in surrounding area
- › Convenient nearby access to the Okemos/I-96 interchange
- › Excellent visibility in a high traffic location: 12,843 VPD Jolly Road, 27,299 VPD Okemos Road, and 51,775 VPD I-96

Lease Information

Total Center SF	24,024 SF
Lease Rate	\$16.00-\$18.00/SF 2,000 or More/1,300 SF or Less
Lease Term	5 years
Estimated NNN's	\$5.50/SF

Demographics



Total Population
1 mile
4,927
3 miles
23,060
5 miles
91,162

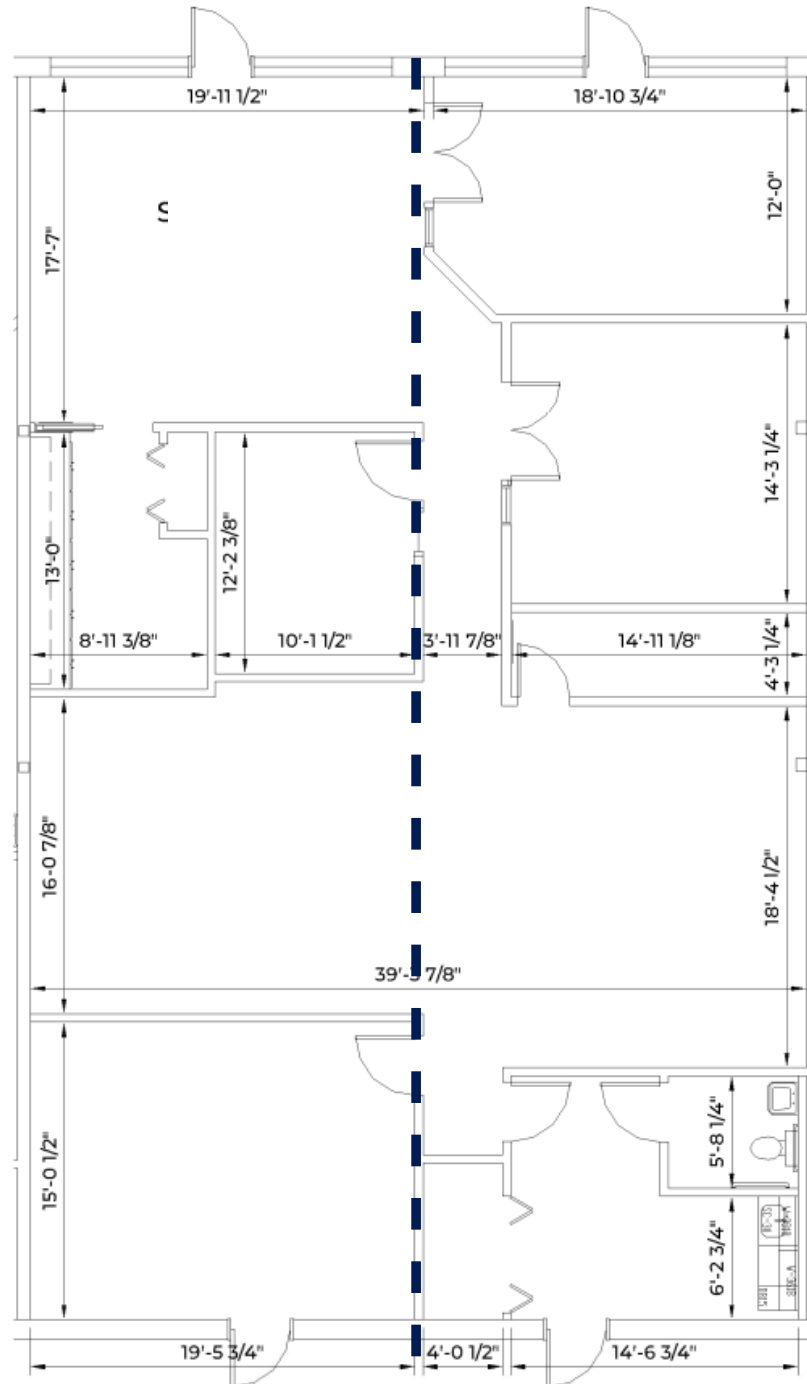


Avg HH Income
1 mile
\$128,878
3 miles
\$131,262
5 miles
\$100,966



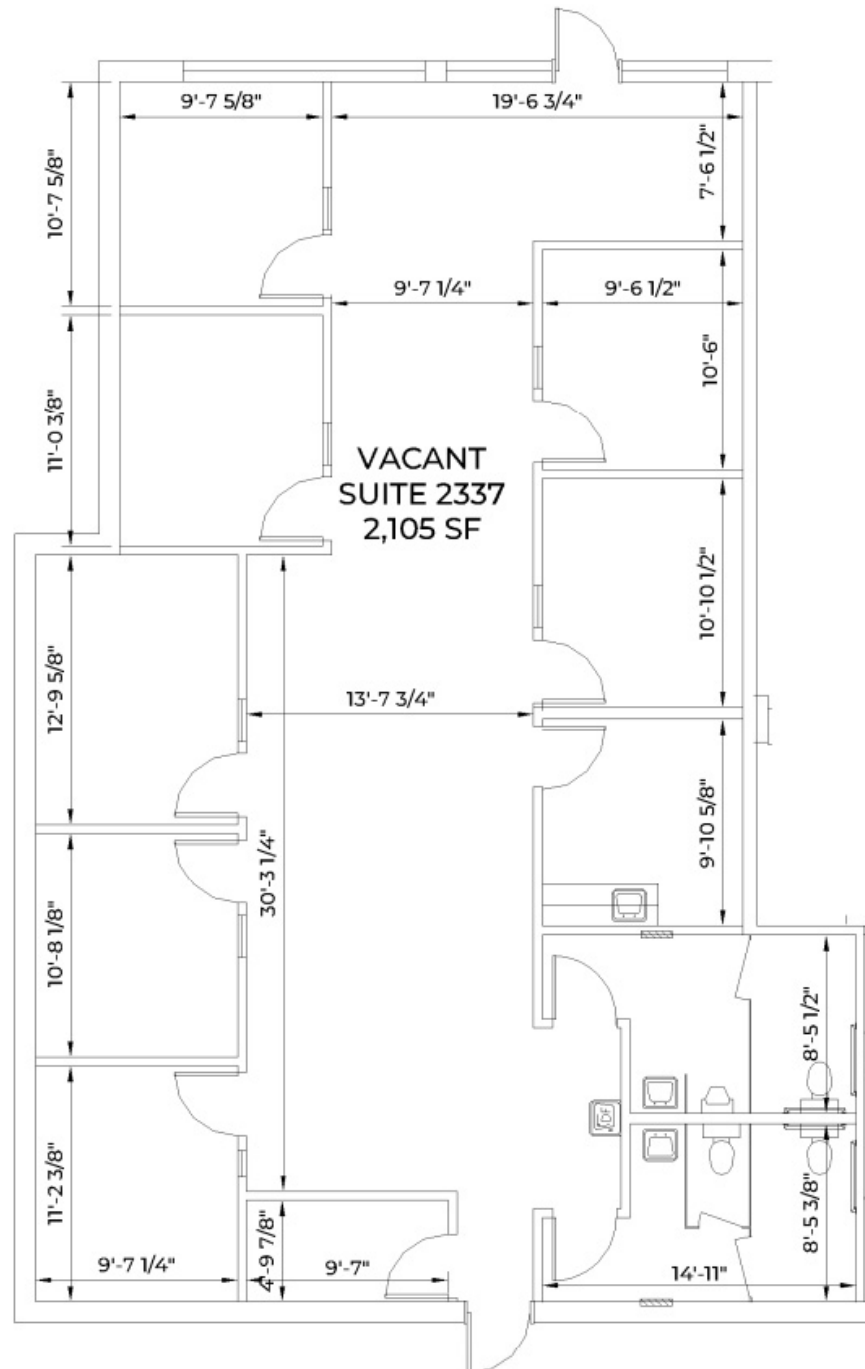
Employed Workforce
1 mile
4,873
3 miles
16,571
5 miles
55,424

Floor Plans



Suite 2325 | 2,600 SF

Floor Plans



Suite 2337 | 2,105 SF

