

Specifications

Marina with ±70 Boat Slips
AVAILABLE

±1.68 AC (Block 2, Lots 1 – 6)
Ample Car & Boat Trailer
PARKING

±2,000 SF Former Restaurant
Currently Leased as 1st Floor Office
and 2nd Floor Apartment
FEATURES

\$22,081.50 IM
TAXES (2025) ZONING

Direct Access to Raritan Bay
at Keansburg
1.4 MI to State Highway 36
4.8 MI to Garden State Parkway
ACCESSIBILITY

For additional property information or to arrange an inspection,
please contact the exclusive brokers:

Scott G. Savastano
Executive Director
973.379.6644 x 147
SGSavastano@blaugberg.com

Nicholas A. Savastano
Associate
973.379.6644 x 234
NSavastano@blaugberg.com

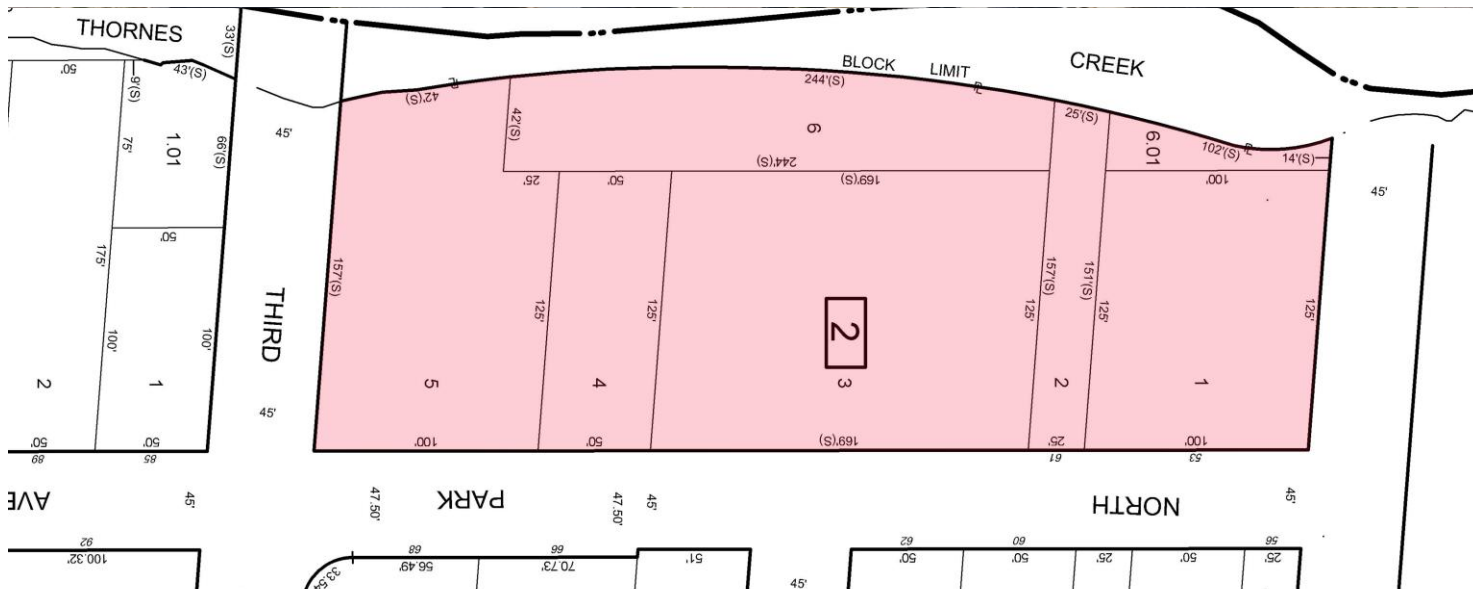
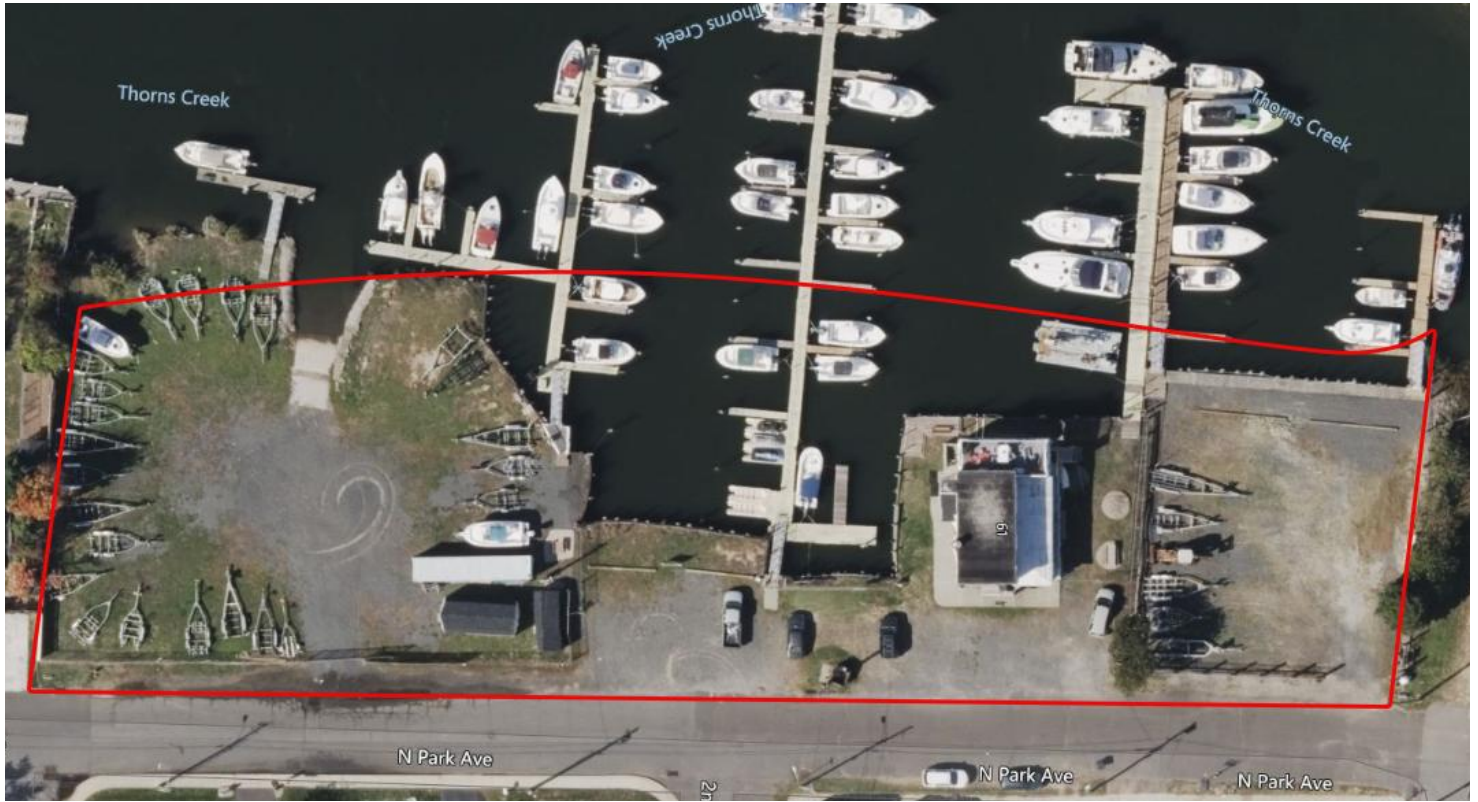


For additional property information or to arrange an inspection,
please contact the exclusive brokers:

Scott G. Savastano
Executive Director
973.379.6644 x 147
SGSavastano@blauberg.com

Nicholas A. Savastano
Associate
973.379.6644 x 234
NSavastano@blauberg.com

FOR SALE | 53 & 61 NORTH PARK AVENUE | KEANSBURG, NJ

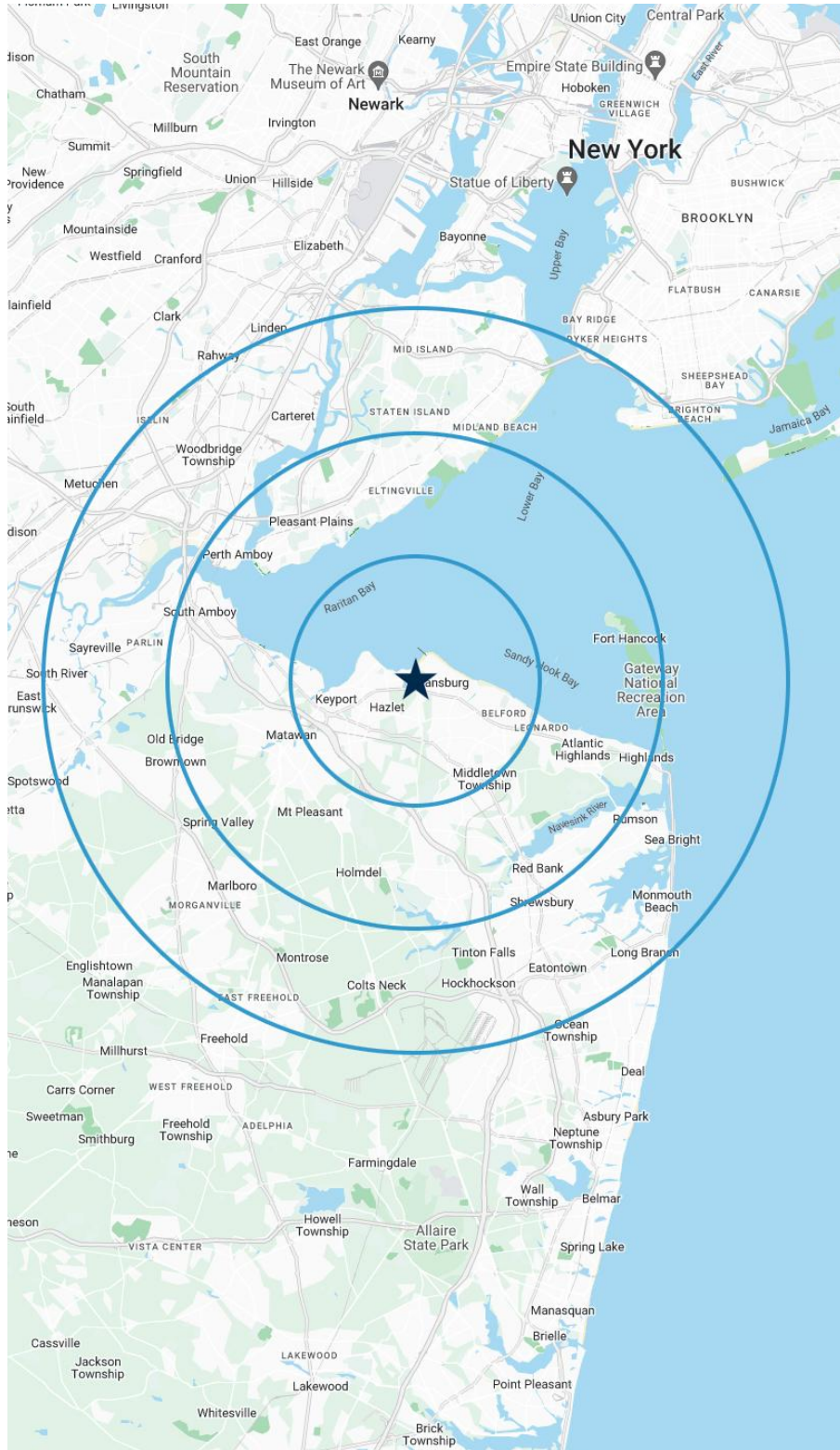


For additional property information or to arrange an inspection, please contact the exclusive brokers:

Scott G. Savastano
 Executive Director
 973.379.6644 x 147
 SGSavastano@blauberg.com

Nicholas A. Savastano
 Associate
 973.379.6644 x 234
 NSavastano@blauberg.com

The information contained herein has been obtained from sources considered to be reliable, but no guarantee of its accuracy is made by this company. In addition, no representation is made respecting zoning, condition of title, dimensions, or any matters of a legal or environmental nature. Such matters should be referred to legal counsel for determination. Terms and conditions are subject to change without prior notice. Subject to errors and omissions.



5 MILES

- Total Population: 105,524
- Households: 39,346
- Median Household Income: \$130,389
- Average Household Size: 2.7
- Transportation to Work: 51,576
- Labor Force: 86,050

10 MILES

- Total Population: 609,927
- Households: 223,651
- Median Household Income: \$122,353
- Average Household Size: 2.7
- Transportation to Work: 296,617
- Labor Force: 497,259

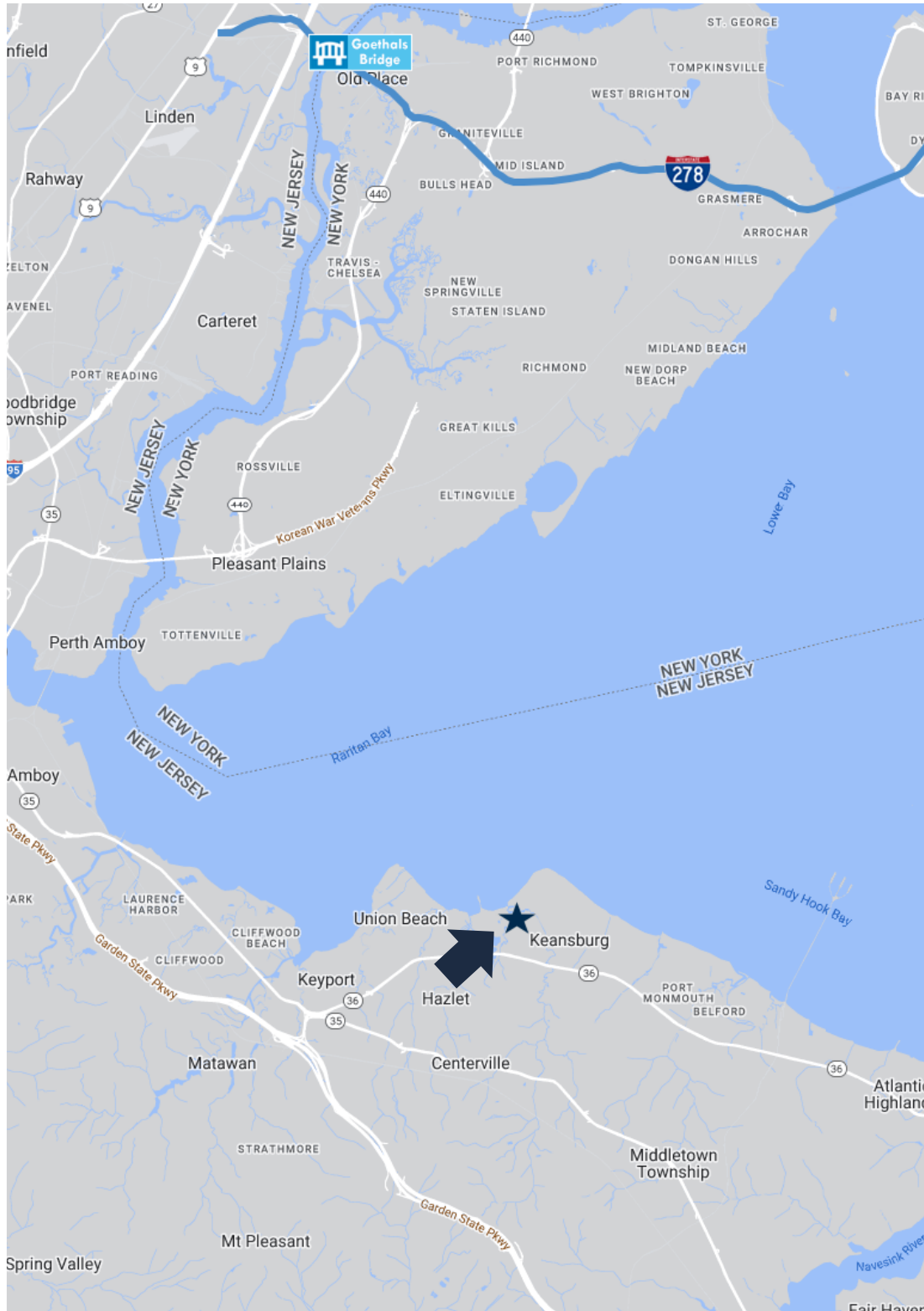
15 MILES

- Total Population: 2.18M
- Households: 793,711
- Median Household Income: \$105,426
- Average Household Size: 2.7
- Transportation to Work: 2.06M
- Labor Force: 1.76M


For additional property information or to arrange an inspection, please contact the exclusive brokers:

Scott G. Savastano
 Executive Director
 973.379.6644 x 147
 SGSavastano@blauberg.com

Nicholas A. Savastano
 Associate
 973.379.6644 x 234
 NSavastano@blauberg.com



ACCESSIBILITY

 1.4 MI
State Highway 36

 4.8 MI
Garden St. Pkwy

 11.6 MI
US-9

 17.0 MI
I-95

For additional property information or to arrange an inspection, please contact the exclusive brokers:

Scott G. Savastano
Executive Director
973.379.6644 x 147
SGSavastano@blauberg.com

Nicholas A. Savastano
Associate
973.379.6644 x 234
NSavastano@blauberg.com

The information contained herein has been obtained from sources considered to be reliable, but no guarantee of its accuracy is made by this company. In addition, no representation is made respecting zoning, condition of title, dimensions, or any matters of a legal or environmental nature. Such matters should be referred to legal counsel for determination. Terms and conditions are subject to change without prior notice. Subject to errors and omissions.