

21599 W. ELEVEN MILE RD.
SOUTHFIELD, MICHIGAN

OFFICE FOR SALE OR LEASE

For Sale: 8,520 Square Feet

For Lease: 3,000 Square Feet



**SIGNATURE
ASSOCIATES**
KNOW SIGNATURE | KNOW RESULTS



PROPERTY FEATURES

- 3,000 square feet for lease
- 8,520 square foot property for sale
- Quality custom buildout
- On-site management
- Ample parking
- Monument signage
- Located on 1.299 acres
- Great access to I-696 and M-10
- Lease Rate: \$18.00/sq. ft. NNN
- Sale Price: \$1,200,000 (\$140.85/sq. ft.)



For more information, please contact:

CHRIS MONSOUR
(248) 948 0107
cmonsour@signatureassociates.com

SIGNATURE ASSOCIATES
One Towne Square, Suite 1200
Southfield, MI 48076
www.signatureassociates.com

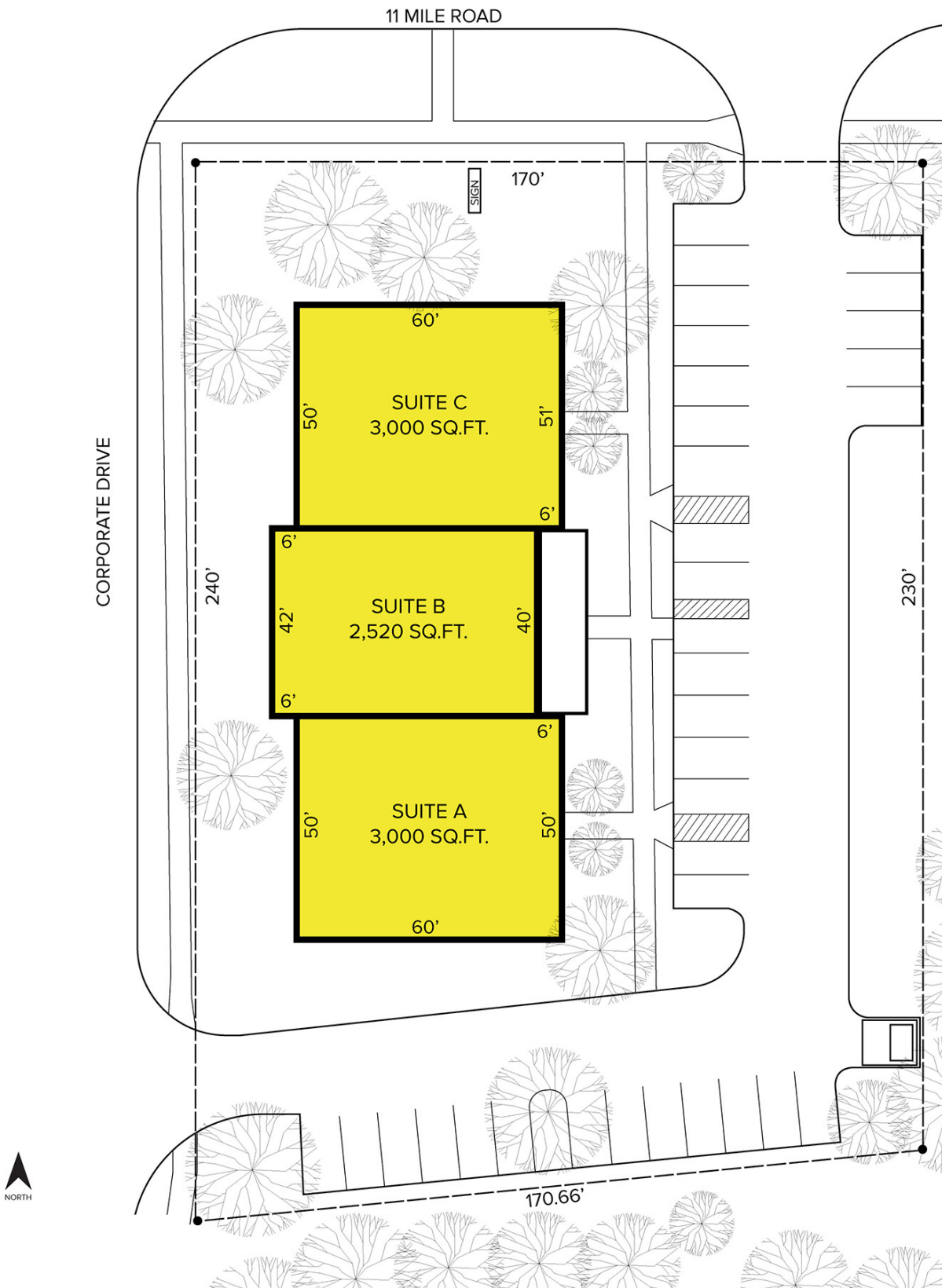
21559 W. Eleven Mile Road – Southfield, Michigan

Office For Sale or Lease

For Lease –
3,000 SF

For Sale –
8,520 SF

Site Plan

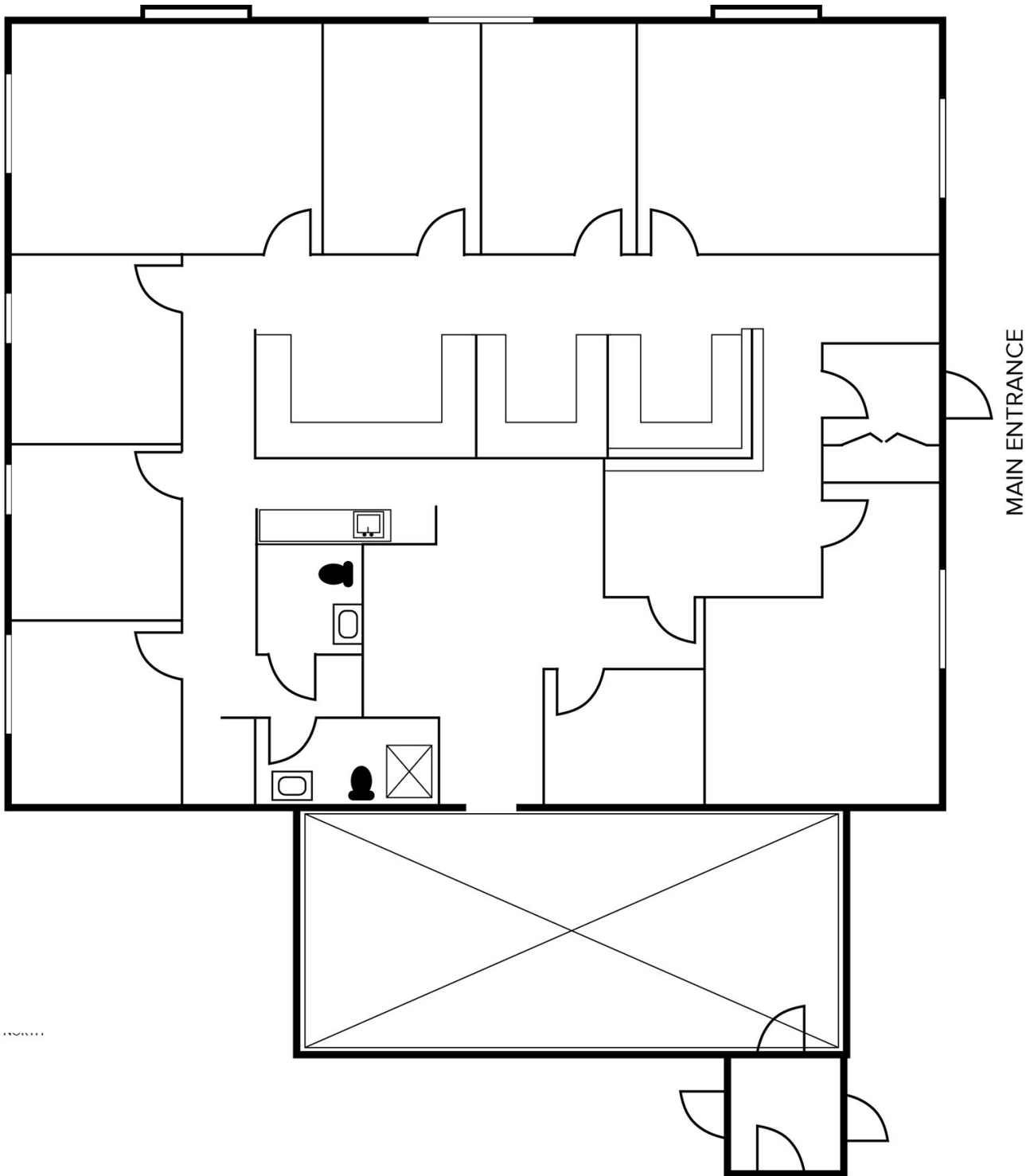


For more information, please contact:

CHRIS MONSOUR
(248) 948 0107
cmonsour@signatureassociates.com

SIGNATURE ASSOCIATES
One Towne Square, Suite 1200
Southfield, MI 48076
www.signatureassociates.com

Floor Plan – Suite 100



For more information, please contact:

CHRIS MONSOUR
(248) 948 0107
cmonsour@signatureassociates.com

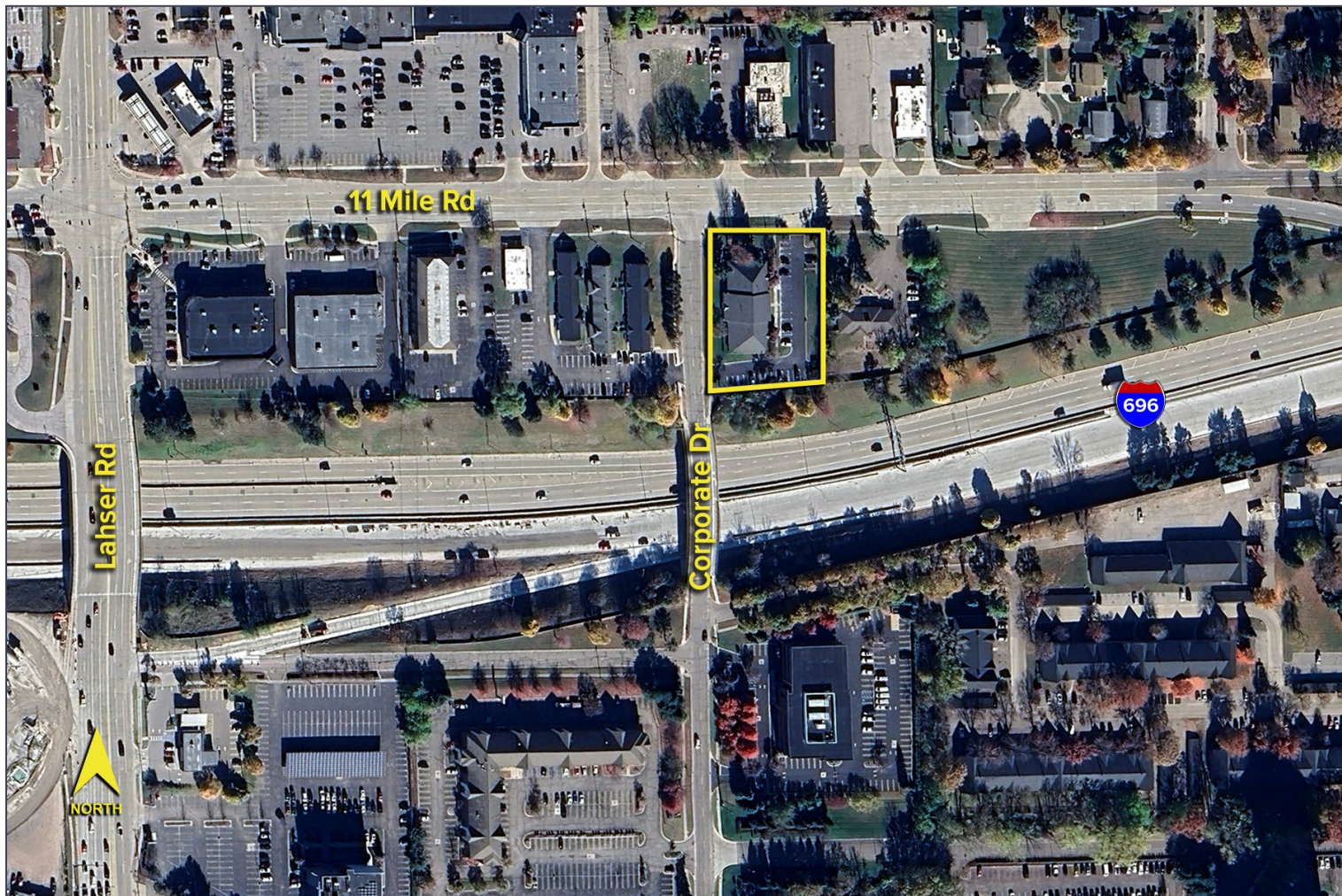
SIGNATURE ASSOCIATES
One Towne Square, Suite 1200
Southfield, MI 48076
www.signatureassociates.com

21559 W. Eleven Mile Road – Southfield, Michigan

Office For Sale or Lease

For Lease –
3,000 SF
For Sale –
8,520 SF

Aerial



For more information, please contact:

CHRIS MONSOUR
(248) 948 0107
cmonsour@signatureassociates.com

SIGNATURE ASSOCIATES
One Towne Square, Suite 1200
Southfield, MI 48076
www.signatureassociates.com