

The Colliers logo is located in the top right corner of the image. It consists of the word "Colliers" in a white serif font, centered within a dark blue rectangular box. Below the text, there are three horizontal stripes in yellow, red, and blue.

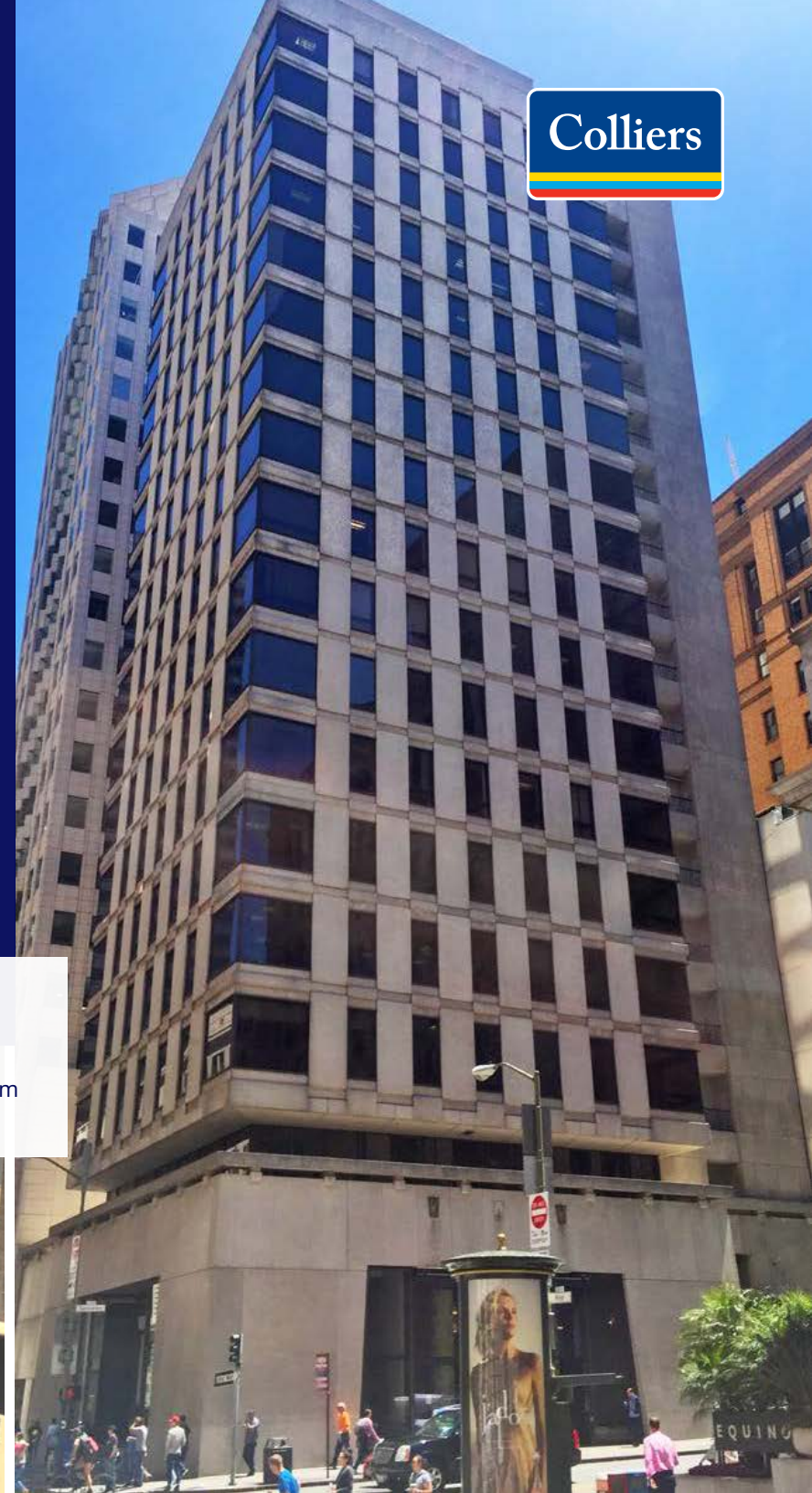
# 180

**Sansome Street**  
San Francisco, CA

±6,107 SF Office Opportunities in  
the Heart of the Financial District

**Brad Van Blois**

Vice President  
1 415 288 7845  
brad.vanblois@colliers.com  
Lic. 01208137





# Property Highlights

## Highlights

- Efficient, side-core ±6,100 SF opportunities
- Located in the Heart of the Financial District
- Great natural light and city views
- On-site security
- One block from BART / Muni
- 15 Parking Spots
- 2nd floor patio deck amenity
- Floor to ceiling window line
- Lobby renovation just completed

## Legend & Amenities < 10 Min Walk

 Subject property
  BART Stations

### Coffee Shops

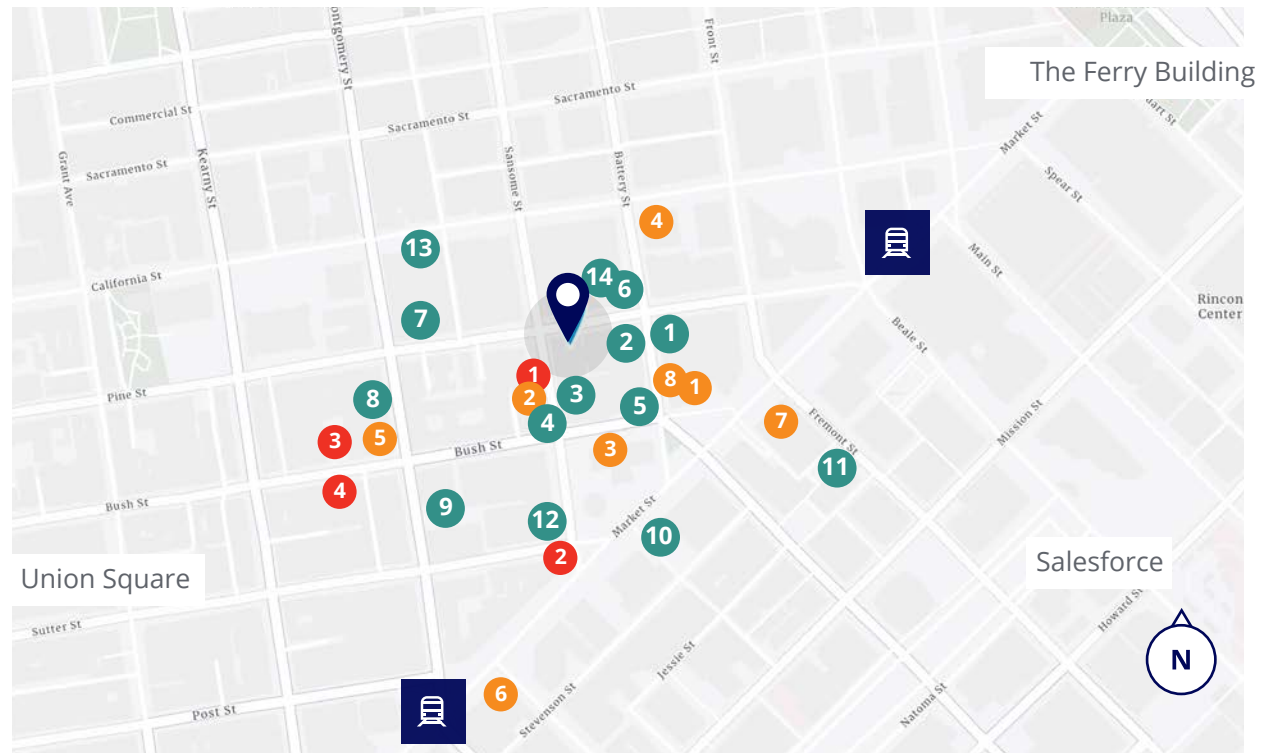
- 1 Philz Coffee
- 2 Blue Bottle
- 3 Coffee Partners LP
- 4 Starbucks
- 5 Peet's Coffee
- 6 Peet's Coffee
- 7 Tully's Coffee
- 8 Flywheel Coffee

### Eateries & Restaurants

- 1 Locali Mediteranean
- 2 77 Chinese & Vietnamese Cuisine
- 3 Mixt
- 4 The Shota
- 5 Noah's Bagels
- 6 Chez BeeSen
- 7 Credo
- 8 Laddle & Leaf
- 9 Per Diem
- 10 Joe & the Juice
- 11 Barcha Restaurant
- 12 Holbrook House
- 13 Mendocino Farm
- 14 Wayfare Tavern

### Bars & Lounge

- 1 The Treasury
- 2 Sutter Station Tavern
- 3 Sam's Tavern
- 4 Pagan Idol





# Current Availabilities

## 180 Sansome

### Descriptions

Suite 500	±6,107 SF	Private office intensive suite with 15 offices, 2 conference rooms, kitchen, production room, reception area
Suite 800	±6,107 SF	Former classroom suite, three large classrooms, two offices, kitchen, storage room
Suite 1000	±6,107 SF	Private office intensive suite with 14 offices, large conference room, medium conference room, production room, kitchen
Suite 1200	±6,107 SF	Exposed ceiling, concrete floor, large conference room, 4 meeting rooms, mother's room, kitchen, 4 storage closets
Suite 1400	±6,107 SF	Exposed ceiling, concrete floor, large conference room, medium conference room, 3 offices, mother's room, kitchen, 4 storage closets

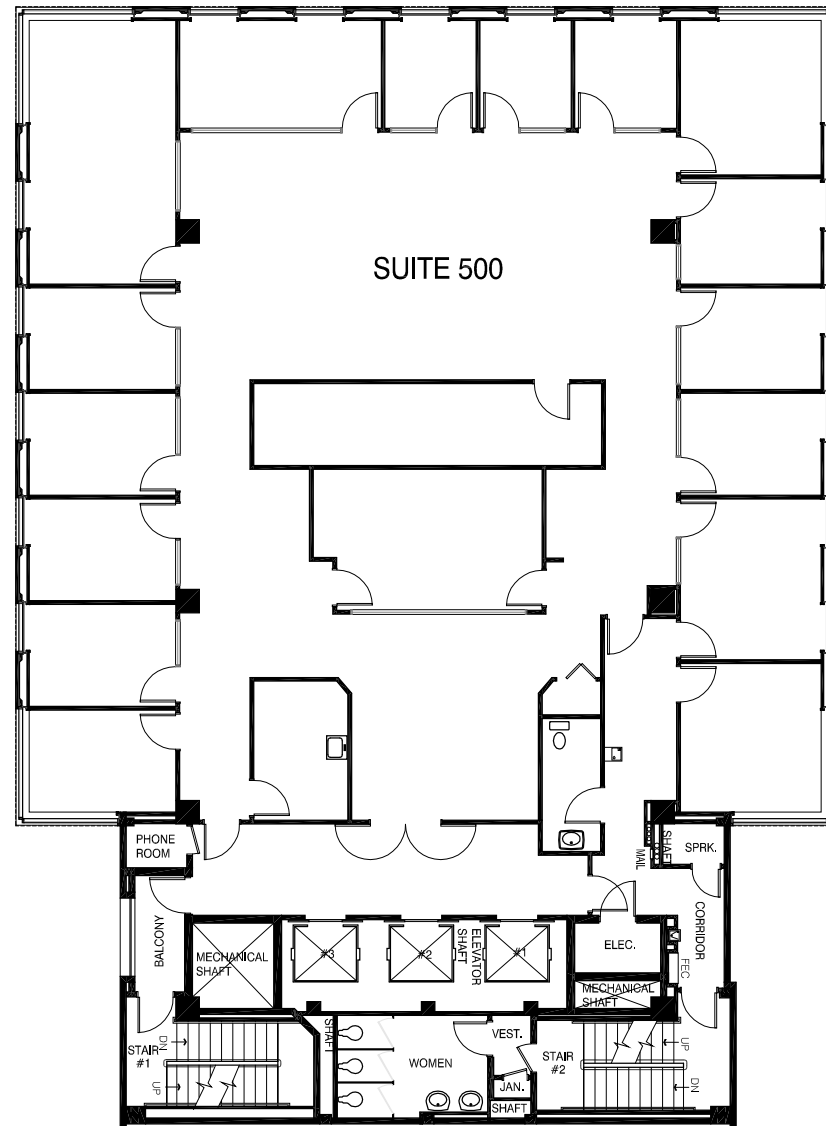


# 5th Floor

±6,107 SF

SANSOME STREET

PINE STREET



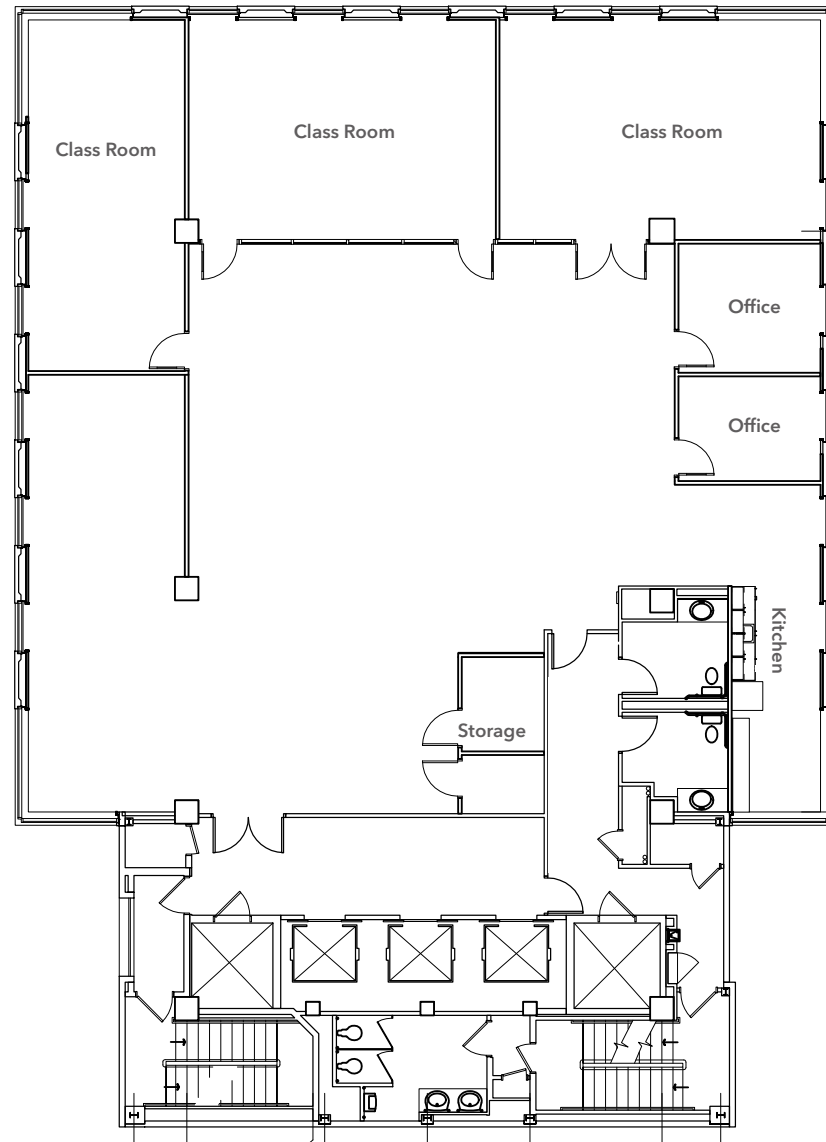
# 8th Floor

±6,107 SF



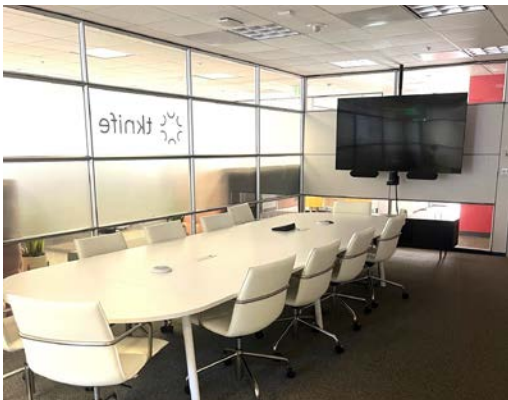
SANSOME STREET

PINE STREET



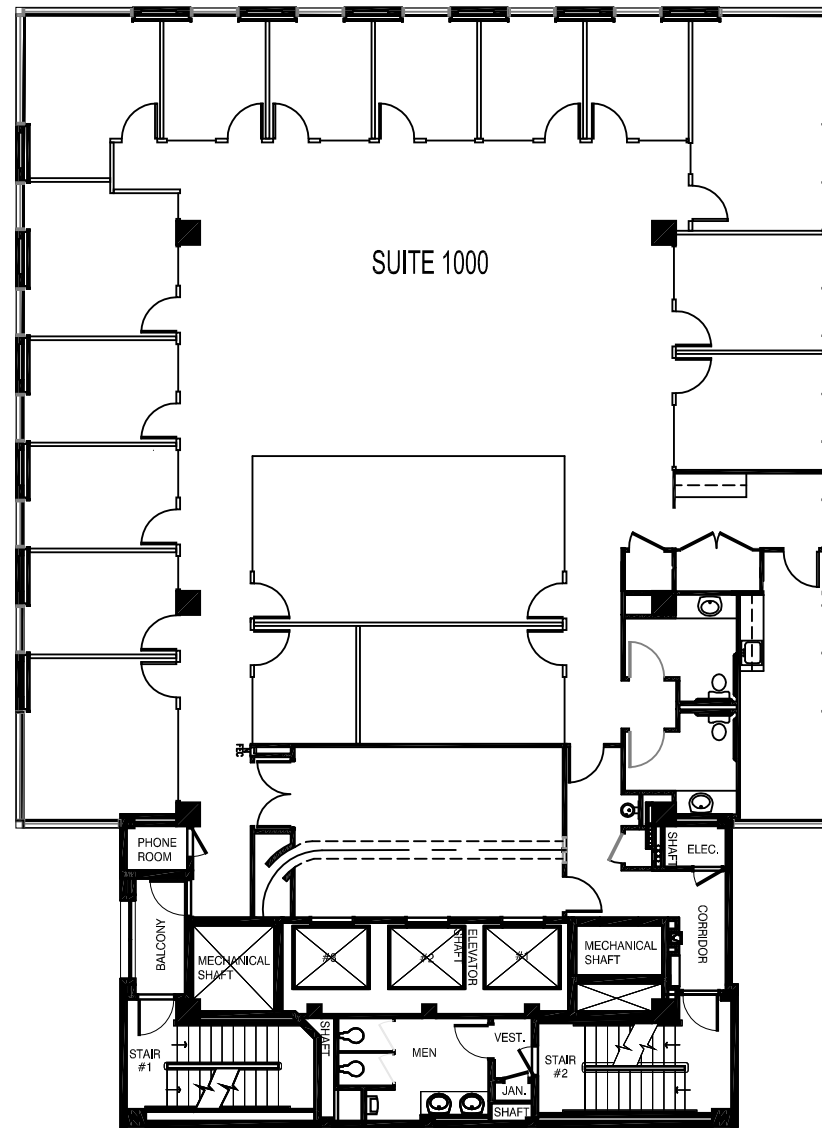
# 10th Floor

±6,107 SF



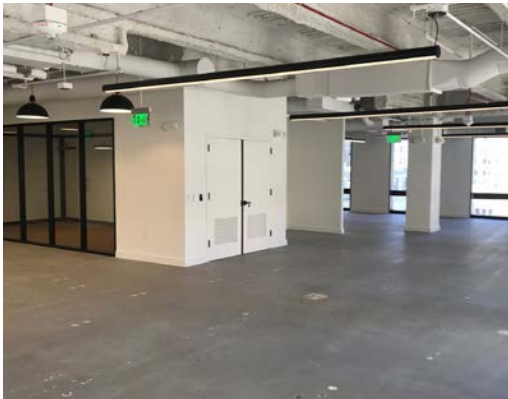
SAN SOME STREET

PINE STREET



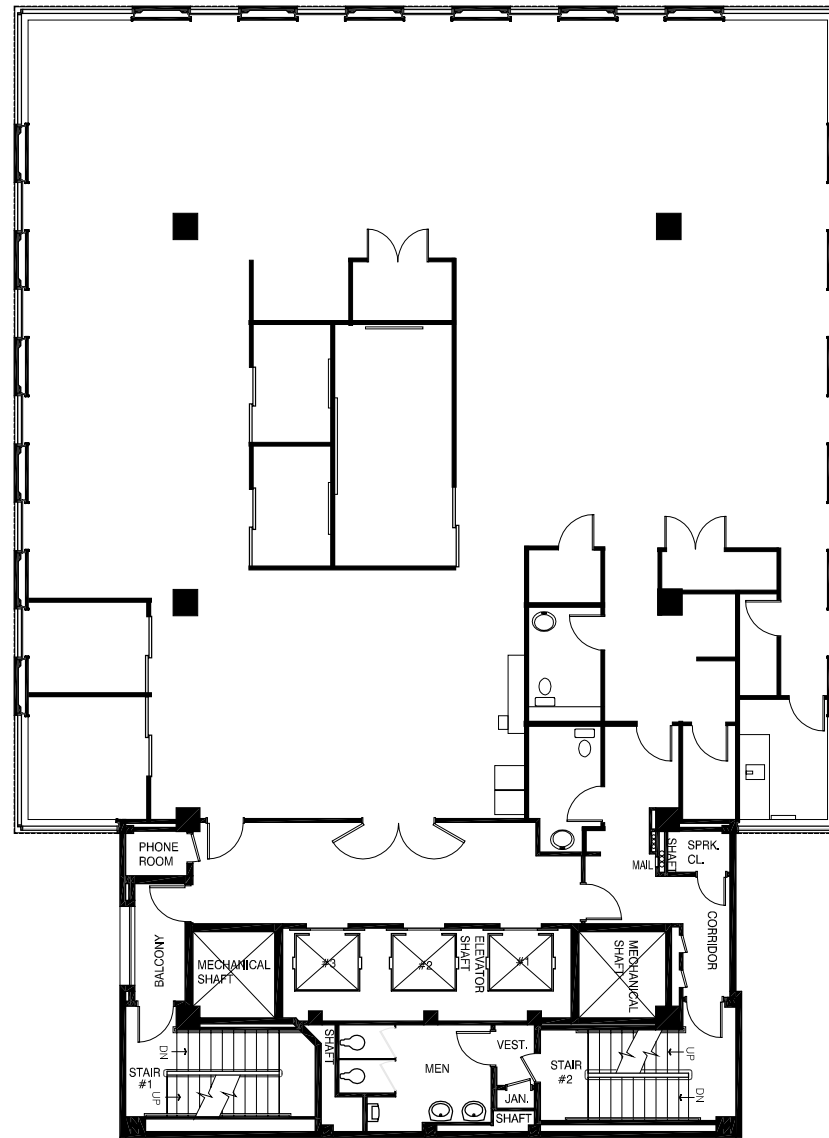
# 12th Floor

±6,107 SF



SAN SOME STREET

PINE STREET



# 14th Floor

±6,107 SF



SANSOME STREET

PINE STREET

