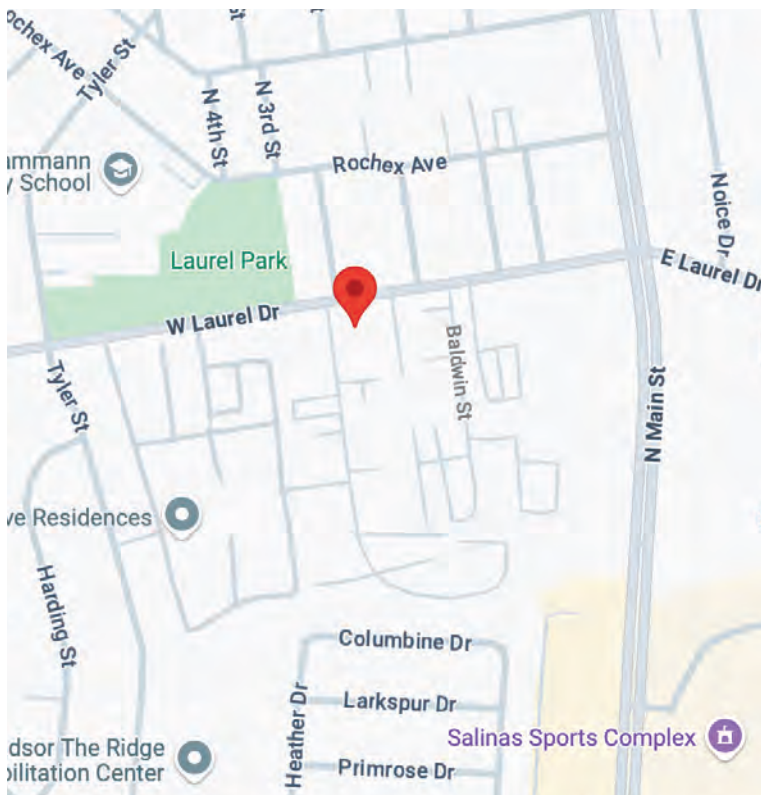


West Laurel Professional Center 275 W Laurel Dr., Salinas, CA

PROPERTY HIGHLIGHTS

- Three (3) separate suites available
- All suites suitable for office or medical/dental use
- Central heating and air conditioning
- Ample parking
- Common lobby with restrooms
- Signage Opportunity
- Easy access to 101
- New window blinds in every suite
- Call listing agent for lease details



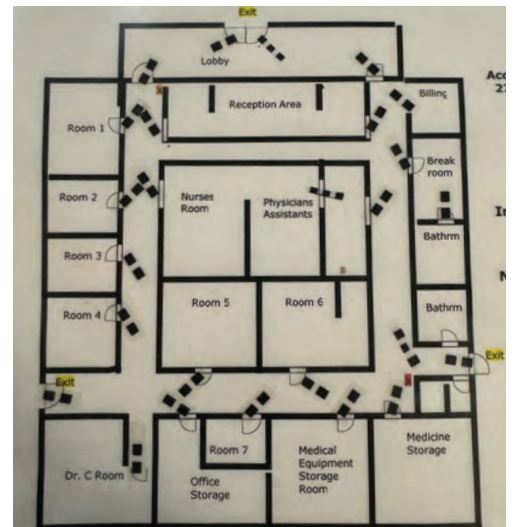
DISCLAIMER: Above information is from sources believed to be reliable but should not be relied upon without verification Atlas Premier Properties assumes no responsibility for its accuracy.

FOR LEASE

Suite A
Approximately 4,500 sq ft

PROPERTY HIGHLIGHTS

- Reception area
- Lobby area
- Six (6) exam rooms
- Nurses station
- Doctor's office
- Break room
- Medicine storage
- Medical equipment storage
- Two (2) unit bathrooms



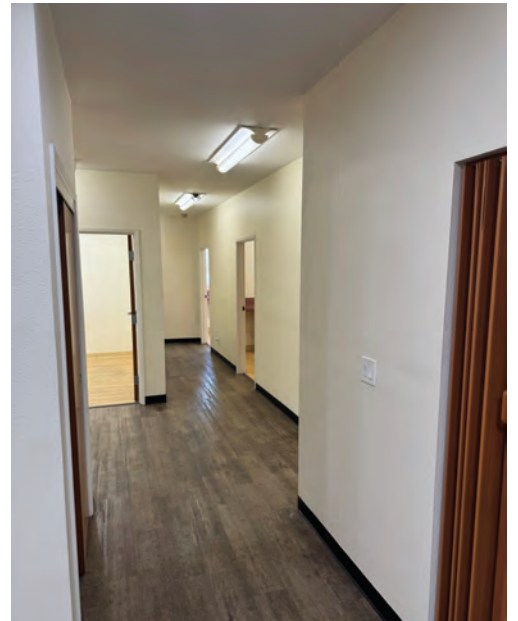
DISCLAIMER: Above information is from sources believed to be reliable but should not be relied upon without verification Atlas Premier Properties assumes no responsibility for its accuracy.

FOR LEASE

Suite B
Approximately 1,500 sq ft

PROPERTY HIGHLIGHTS

- Reception area
- Lobby area
- Five (5) exam rooms
- One (1) bathroom



DISCLAIMER: Above information is from sources believed to be reliable but should not be relied upon without verification Atlas Premier Properties assumes no responsibility for its accuracy.

FOR LEASE

Suite C
Approximately 1,500 sq ft

PROPERTY HIGHLIGHTS

- Lobby and reception area
- Four (4) exam rooms
- Doctor's office with bathroom
- Nurse's station
- Staff bathroom



DISCLAIMER: Above information is from sources believed to be reliable but should not be relied upon without verification Atlas Premier Properties assumes no responsibility for its accuracy.