



15 Acres - Cherries | Lemoore, CA

Property For Sale

1005 N Demaree Street  
Visalia, California 93291  
O | 559.754.3020  
F | 559.429.4016  
[www.mdgre.com](http://www.mdgre.com)

**GRAHAM** | **& ASSOCIATES**

Joe Silva  
Lic# 01225765  
559.901.3616  
[joesilva@mdgre.com](mailto:joesilva@mdgre.com)

to learn more, visit: [www.mdgre.com](http://www.mdgre.com)

## PROPERTY DETAILS

**Address:** W Hanford-Armona Road (East of 17th Ave) | Lemoore, CA

**APN:** 021-030-059

**Land Available:** 14.88 +/- Acres

**Zoning:** AL10

**Water:** Located within Mid Kings River GSA

**Wells:** 2 Wells | 1st well 117 GPM & 2nd well 68 GPM

**Variety:** 2,285 Count - Coral Variety - 17x11 Spacing  
283 Count - Brooks Variety - 17x11 Spacing

**Sales Price** **\$33,595.00 Per Acre | \$499,900.00 Total**  
**\*Owner Financing Available\***



**Contact Broker:**

Jason Castle    Joe Silva  
Lic# 01140378    Lic# 01225765

**to learn more, visit: [www.mdgre.com](http://www.mdgre.com)**

1005 N Demaree Street  
Visalia, California 93291  
O | 559.754.3020

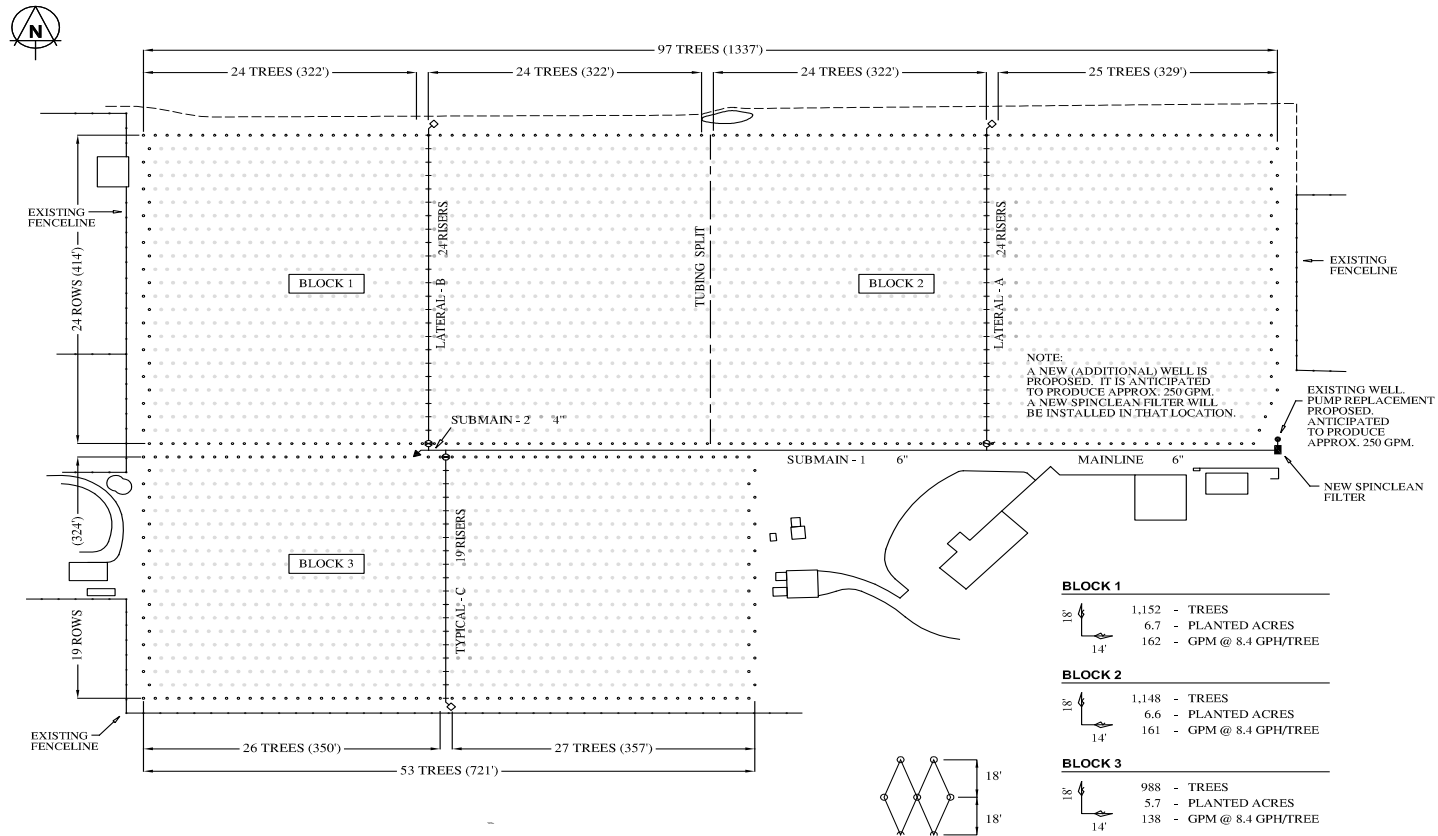
PLEASE NOTE: ALL INFORMATION AND REPRESENTATION MADE HEREIN, WHILE NOT GUARANTEED, HAVE BEEN SECURED FROM SOURCES WE BELIEVE TO BE RELIABLE, HOWEVER, THEY ARE NOT WARRANTED BY MATT GRAHAM & ASSOCIATES AND ARE SUBJECT TO CHANGE WITHOUT NOTICE.

## SOIL MAP



Map Unit Symbol	Map Unit Name	Acres in AOI	Percent of AOI
149	Nord complex	14.4	100.0%
<b>Totals for Area of Interest</b>		<b>14.4</b>	<b>100.0%</b>

# SITE MAP



**Contact Broker:**

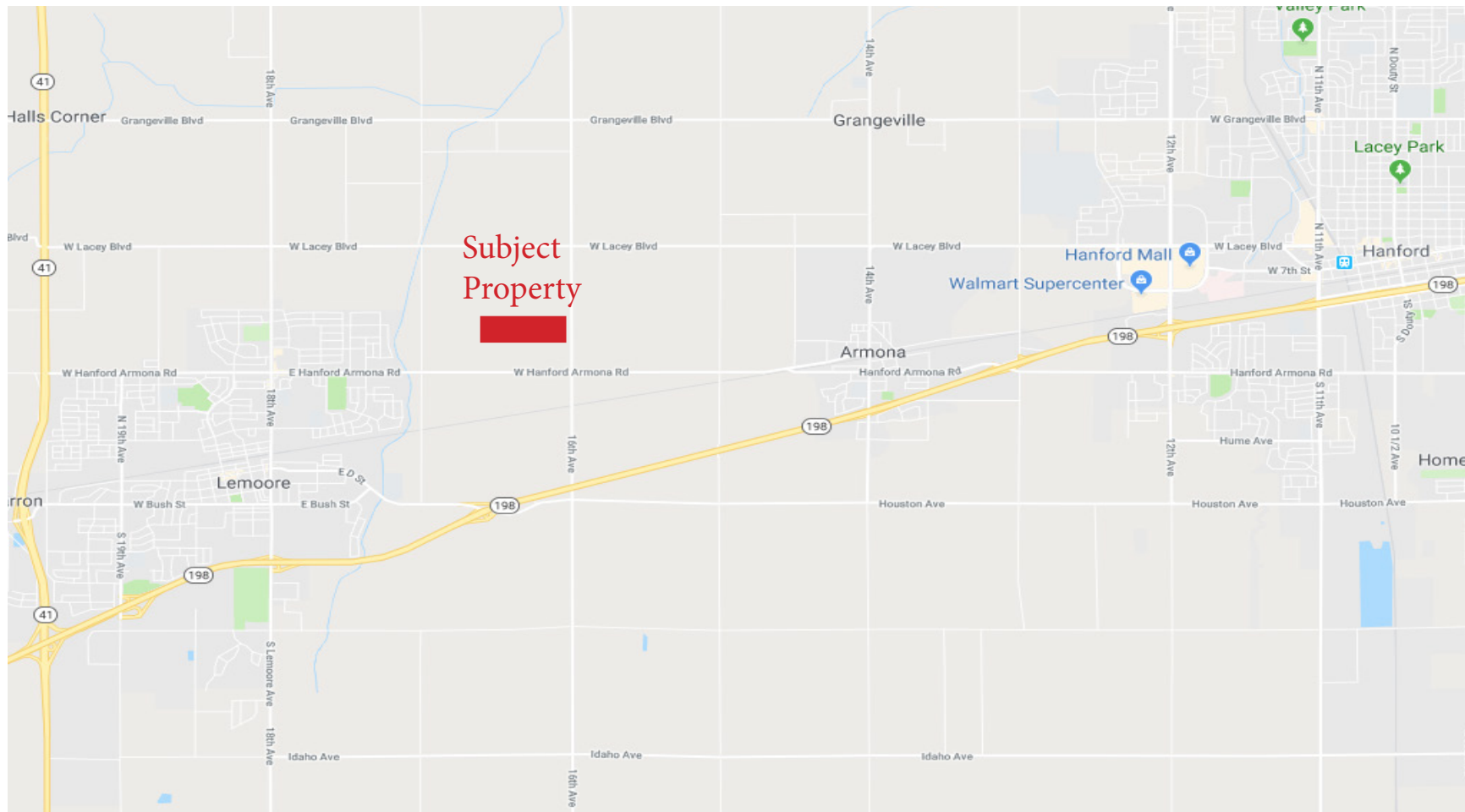
Jason Castle    Joe Silva  
Lic# 01140378    Lic# 01225765

to learn more, visit: [www.mdgre.com](http://www.mdgre.com)

1005 N Demaree Street  
Visalia, California 93291  
O | 559.754.3020

PLEASE NOTE: ALL INFORMATION AND REPRESENTATION MADE HEREIN, WHILE NOT GUARANTEED, HAVE BEEN SECURED FROM SOURCES WE BELIEVE TO BE RELIABLE, HOWEVER, THEY ARE NOT WARRANTED BY MATT GRAHAM & ASSOCIATES AND ARE SUBJECT TO CHANGE WITHOUT NOTICE.

## LOCATION MAP



PLEASE NOTE: ALL INFORMATION AND REPRESENTATION MADE HEREIN, WHILE NOT GUARANTEED, HAVE BEEN SECURED FROM SOURCES WE BELIEVE TO BE RELIABLE, HOWEVER, THEY ARE NOT WARRANTED BY MATT GRAHAM & ASSOCIATES AND ARE SUBJECT TO CHANGE WITHOUT NOTICE.

## PROPERTY LAYOUT



PLEASE NOTE: ALL INFORMATION AND REPRESENTATION MADE HEREIN, WHILE NOT GUARANTEED, HAVE BEEN SECURED FROM SOURCES WE BELIEVE TO BE RELIABLE, HOWEVER, THEY ARE NOT WARRANTED BY MATT GRAHAM & ASSOCIATES AND ARE SUBJECT TO CHANGE WITHOUT NOTICE.

## PROPERTY PHOTOS

