



Greenwich Centre

192 Ballard Court

Virginia Beach, Virginia 23462

Property Highlights

- Class A Office Space
- Centrally located with convenient interstate access
- Potential for pylon and building signage
- Excellent Parking ratio
- Renovated Lobby and Restrooms
- Suites with flexible layouts and great window line

Building Summary

Lease Rate: \$22.50/ RSF, Full Service

Building Size: 57,643 RSF

Available Suites: Suite 104- 908 RSF
Suite 210- 1,340 RSF
Suite 403- 3,350 RSF

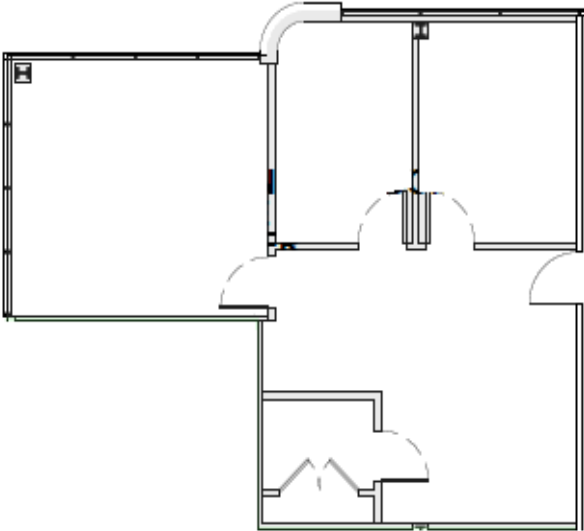
For More Information

Matt Wilbricht

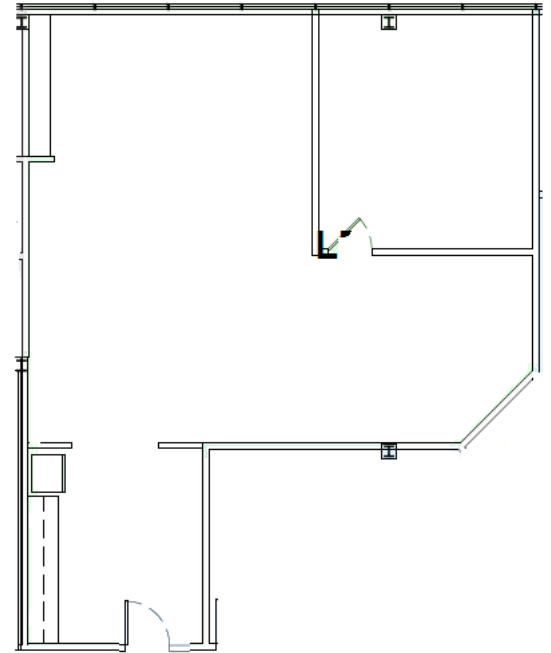
Executive Vice President, Principal

C: 757 270 6956

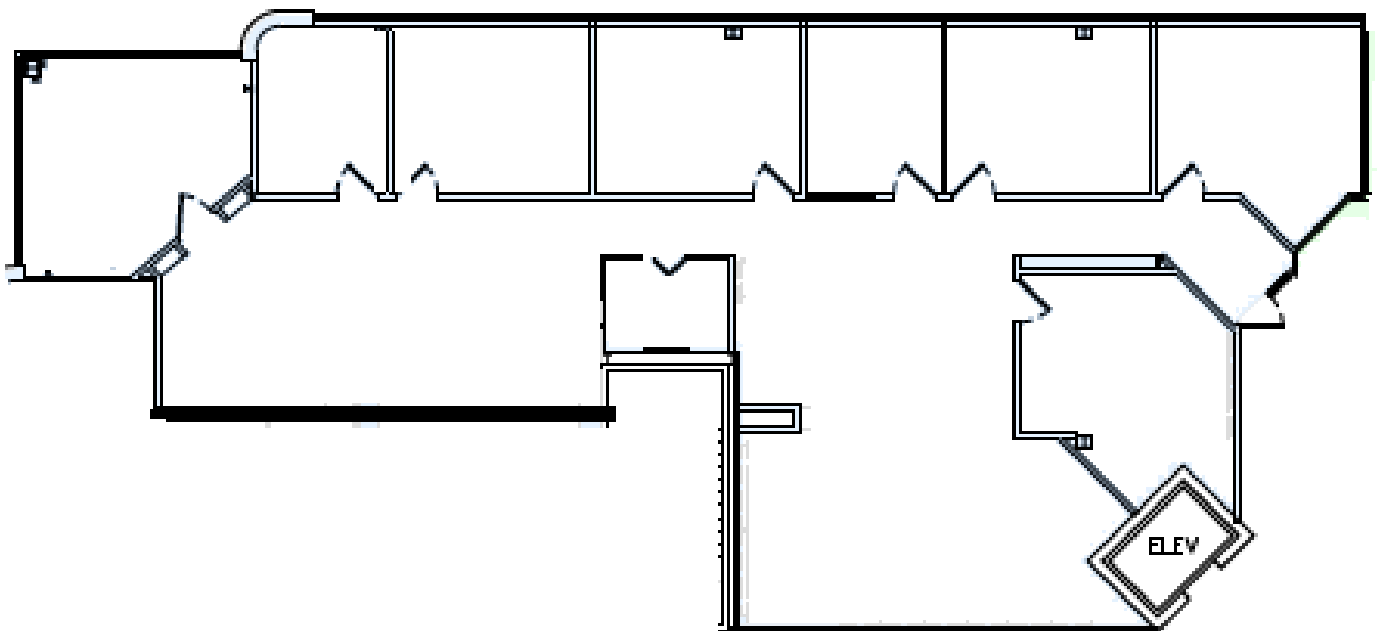
mattwilbricht@naidominion.com



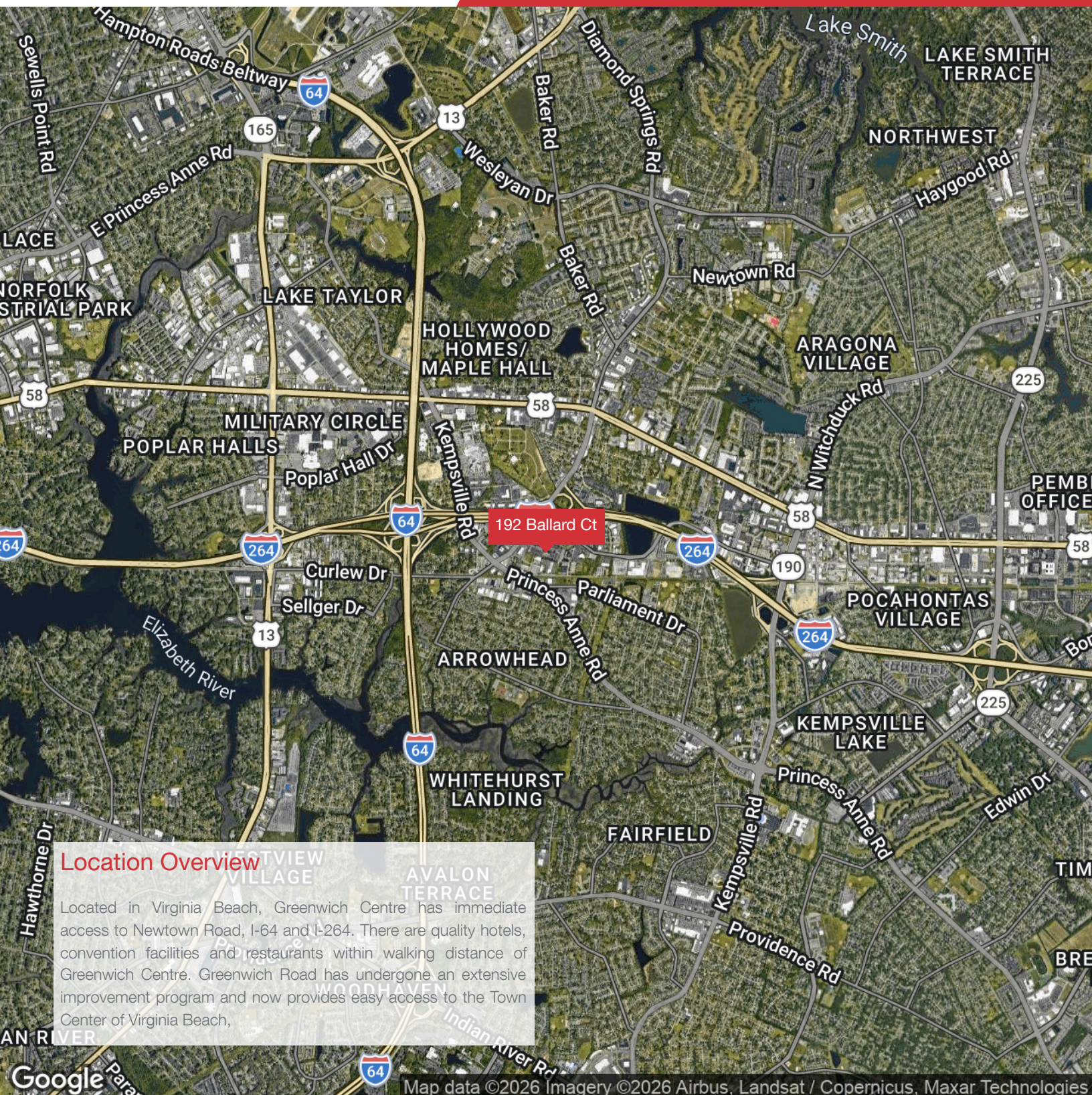
Suite 104- 908 RSF



Suite 210- 1,340 RSF



Suite 403- 3,350 RSF



Location Overview

Located in Virginia Beach, Greenwich Centre has immediate access to Newtown Road, I-64 and I-264. There are quality hotels, convention facilities and restaurants within walking distance of Greenwich Centre. Greenwich Road has undergone an extensive improvement program and now provides easy access to the Town Center of Virginia Beach,