

FOR LEASE



OFFERED AT
\$4,100 / MONTH

- 2nd floor space available as soon as April 1st, 2026
- Modified Gross lease
- Tenant pays phone, electric, internet, & janitorial
- Elevator access
- Located in the Mill District
- Ample parking
- Razorback Greenway adjacent

+/- 2,360 HEATED
SQ. FT.

\$20.85 STARTING
RENT PSF

4 HARD WALL
OFFICES



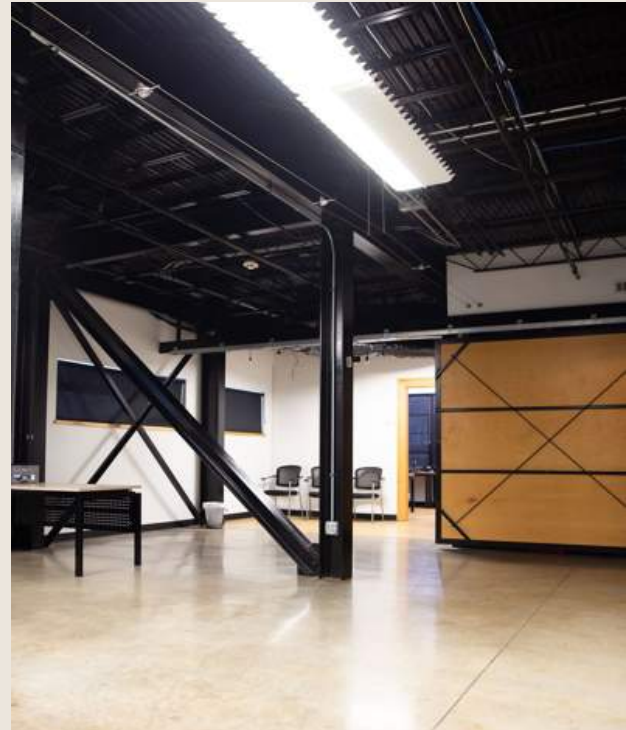
Suite 220
525 S School Avenue
Fayetteville, AR 72701



www.hatrackrealestate.com

CHRIS ALLCORN
479.466.8829

DEVIN BRITTON
479.305.9960



CHRIS ALLCORN
479.466.8829

DEVIN BRITTON
479.305.9960



Suite 220
525 S School Avenue
Fayetteville, AR 72701



www.hatrackrealestate.com



HAT RACK

REAL ESTATE

Located in the heart of the cultural arts corridor and directly on the Razorback Greenway, this creative office space offers walking distance to multiple cafés and restaurants. Positioned in the center of Fayetteville's vibrant activity. Ideal for a growing business wanting collaboration space with private offices.



Suite 220
525 S School Avenue
Fayetteville, AR 72701



www.hatrackrealestate.com

All information is deemed reliable but not guaranteed.

CHRIS ALLCORN
479.466.8829

DEVIN BRITTON
479.305.9960