

FOR LEASE

FIRST FLOOR OFFICE SPACE IN NATURAL SETTING



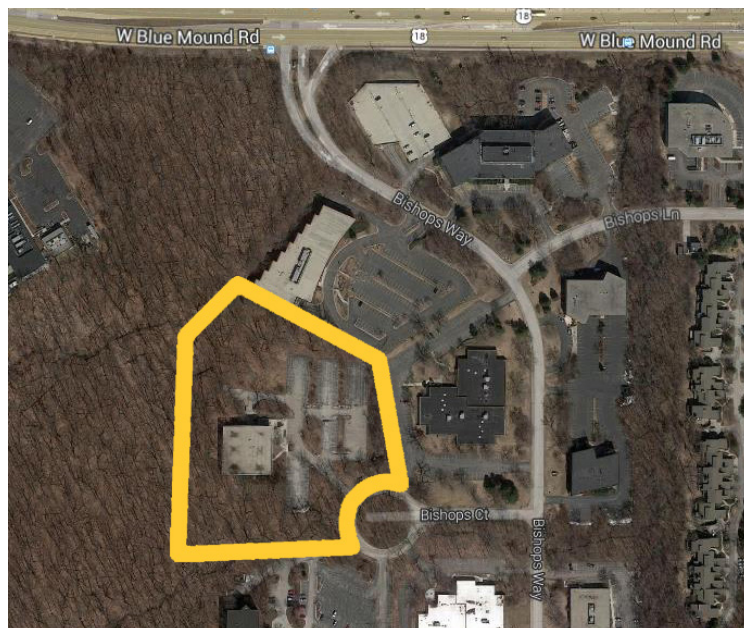
Bishops Woods Office Park
13600 Bishops Court
Brookfield (Suburban Milwaukee), WI 53005

5,200-9,400 SF AVAILABLE
\$20.00/SF Modified Gross*

Property Highlights

- Idyllic natural setting
- Move-in ready - furniture also available
- Plentiful on-site parking
- High-end finishes
- On-site owner
- Central location with easy freeway access

**Tenant responsible for its own janitorial.*



[Click Here to View Tour of Space](#)

**FOR MORE
INFORMATION,
CONTACT:**

David L. Barry, CCIM, SIOR
414-803-4988
dbarry@barrycre.com



Commercial Real Estate Services
Since 1921

1232 NORTH EDISON STREET | MILWAUKEE, WI 53202 | 414-271-1870 MAIN | 414-271-1478 FAX | WWW.BARRYCRE.COM

The information contained herein was lawfully obtained from sources we consider reliable but may contain errors, omissions, approximations or outdated information. Barry Commercial Real Estate Services, Inc. (The Barry Company), its employees and independent contractors make no representations or warranties whatsoever regarding: (1) the accuracy of the information contained herein and (2) the physical or environmental condition of this property or any part of this property. Prospective purchasers are strongly encouraged to conduct an independent investigation of the condition of this property.

Bishops Woods Office Park

13600 Bishops Court
Brookfield (Suburban Milwaukee), WI 53005

5,200-9,400 SF AVAILABLE
\$20.00/SF Modified Gross*

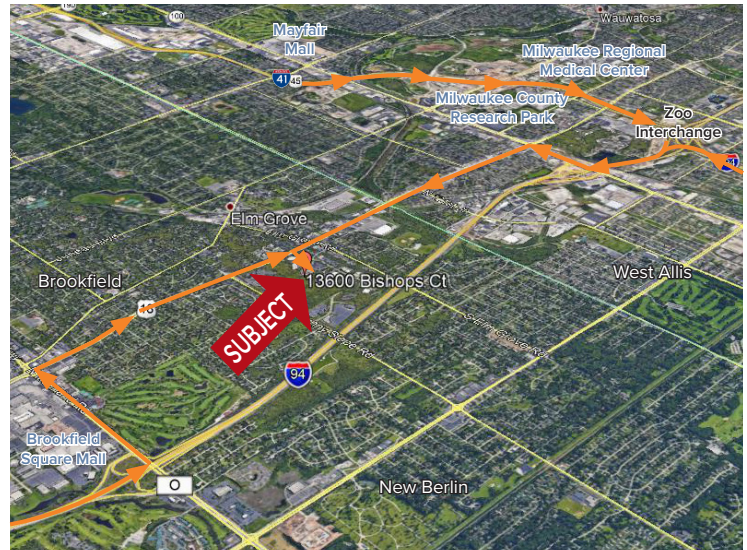


**Tenant responsible for its own janitorial.*

Property Highlights

Building Size:	±30,000 SF (plus garden level)
Available Sizes:	±5,200 SF or ±9,400 SF (both located on first floor)
Building Dimensions:	122' 10" x 122' 10"
# of Building Floors:	2, plus garden level
Year Built/Renovated:	1997/2015
Loading Doors:	1
Sprinkler:	None
Elevators:	Yes
Present Use:	General office
Parking Area:	146 spaces
Zoning:	O+LI -- Office and limited industry

Multiple points of interstate access from all directions



**FOR MORE
INFORMATION,
CONTACT:**

David L. Barry, CCIM, SIOR
414-803-4988
dbarry@barrycre.com

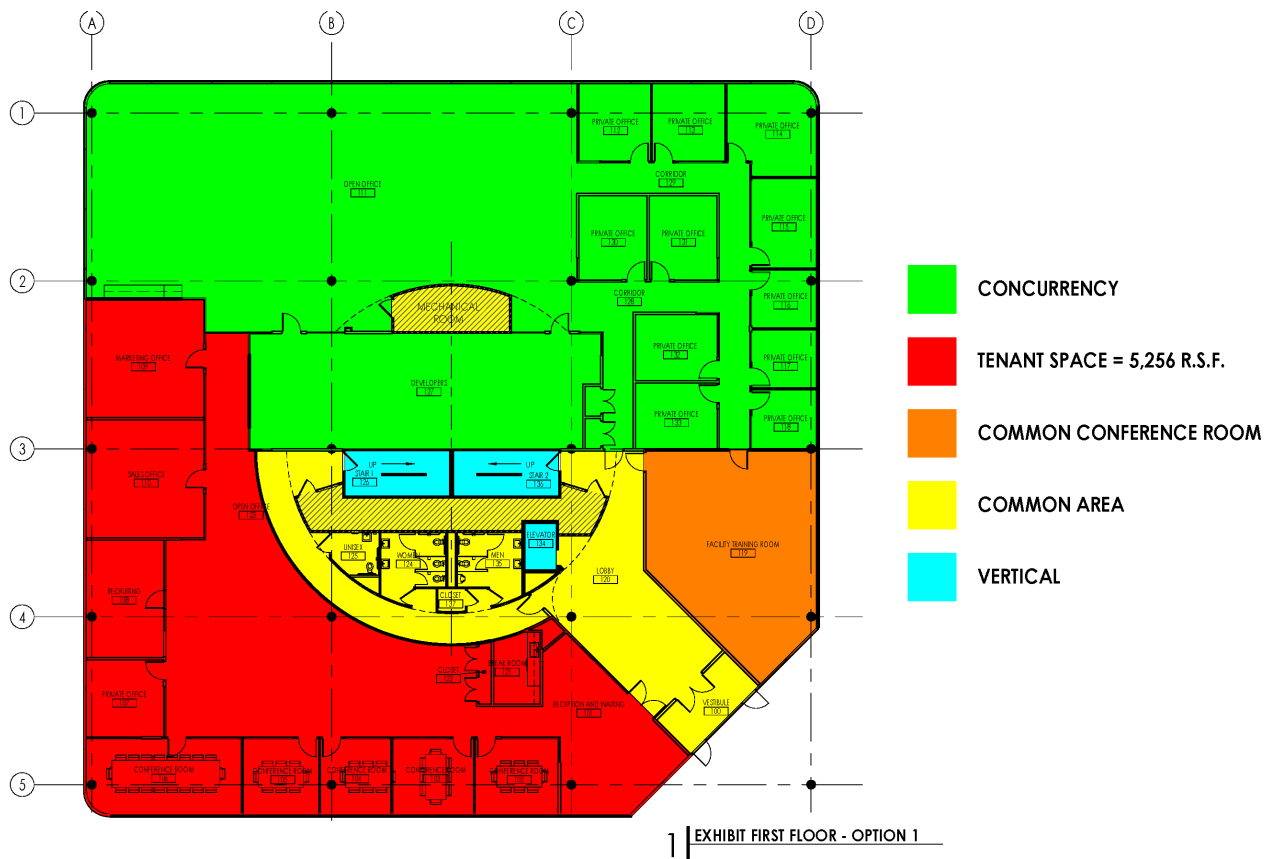


1232 NORTH EDISON STREET | MILWAUKEE, WI 53202 | 414-271-1870 MAIN | 414-271-1478 FAX | WWW.BARRYCRE.COM

The information contained herein was lawfully obtained from sources we consider reliable but may contain errors, omissions, approximations or outdated information. Barry Commercial Real Estate Services, Inc. (The Barry Company), its employees and independent contractors make no representations or warranties whatsoever regarding: (1) the accuracy of the information contained herein and (2) the physical or environmental condition of this property or any part of this property. Prospective purchasers are strongly encouraged to conduct an independent investigation of the condition of this property.

5,200-9,400 SF AVAILABLE
\$20.00/SF Modified Gross*

Floor Plan Option 1 (5,200 SF)



**STEPHEN
 PERRY
 SMITH**
 ARCHITECTS, INC.

13600 BISHOPS COURT

PROJECT NUMBER: PROJECT NUMBER (Project Information)

SHEET ISSUE DATE: 09/17/25

X-1

**Tenant responsible for its own janitorial.*

**FOR MORE
 INFORMATION,
 CONTACT:**

David L. Barry, CCIM, SIOR
 414-803-4988
 dbarry@barrycre.com

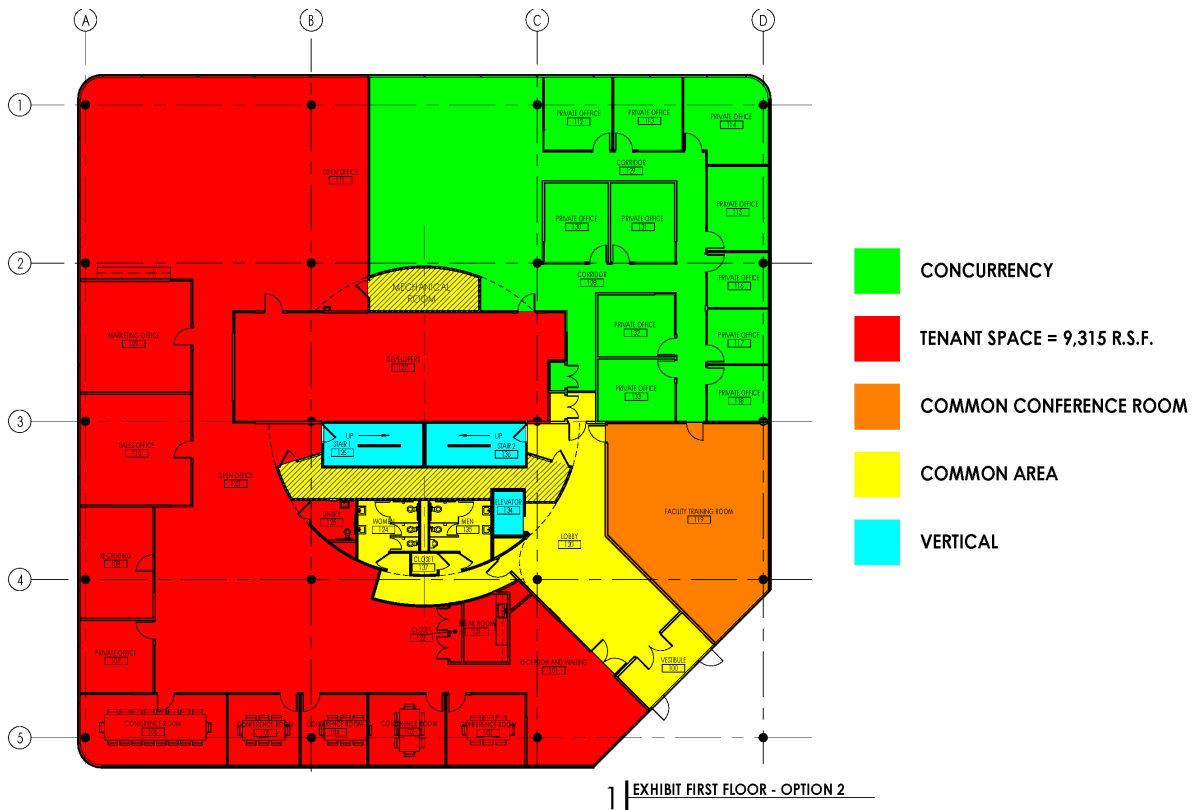


1232 NORTH EDISON STREET | MILWAUKEE, WI 53202 | 414-271-1870 MAIN | 414-271-1478 FAX | WWW.BARRYCRE.COM

The information contained herein was lawfully obtained from sources we consider reliable but may contain errors, omissions, approximations or outdated information. Barry Commercial Real Estate Services, Inc. (The Barry Company), its employees and independent contractors make no representations or warranties whatsoever regarding: (1) the accuracy of the information contained herein and (2) the physical or environmental condition of this property or any part of this property. Prospective purchasers are strongly encouraged to conduct an independent investigation of the condition of this property.

5,200-9,400 SF AVAILABLE
\$20.00/SF Modified Gross*

Floor Plan Option 2 (9,400 SF)



STEPHEN
 PERRY
 SMITH
 ARCHITECTS, INC.

13600 BISHOPS COURT

PROJECT NUMBER: PROJECT NUMBER (Project Information)

SHEET ISSUE DATE: 09/17/25

X-2

**FOR MORE
 INFORMATION,
 CONTACT:**

David L. Barry, CCIM, SIOR
 414-803-4988
 dbarry@barrycre.com



Commercial Real Estate Services
 Since 1921

1232 NORTH EDISON STREET | MILWAUKEE, WI 53202 | 414-271-1870 MAIN | 414-271-1478 FAX | WWW.BARRYCRE.COM

The information contained herein was lawfully obtained from sources we consider reliable but may contain errors, omissions, approximations or outdated information. Barry Commercial Real Estate Services, Inc. (The Barry Company), its employees and independent contractors make no representations or warranties whatsoever regarding: (1) the accuracy of the information contained herein and (2) the physical or environmental condition of this property or any part of this property. Prospective purchasers are strongly encouraged to conduct an independent investigation of the condition of this property.

BROKER DISCLOSURE TO NON-RESIDENTIAL CUSTOMERS

1 Prior to negotiating on your behalf the Broker must provide you the following disclosure statement:

2 **BROKER DISCLOSURE TO CUSTOMERS**

3 You are a customer of the broker. The broker is either an agent of another party in the transaction or a subagent of another broker
4 who is the agent of another party in the transaction. The broker, or a salesperson acting on behalf of the broker, may provide
5 brokerage services to you. Whenever the broker is providing brokerage services to you, the broker owes you, the customer, the
6 following duties:

7 ■ The duty to provide brokerage services to you fairly and honestly.

8 ■ The duty to exercise reasonable skill and care in providing brokerage services to you.

9 ■ The duty to provide you with accurate information about market conditions within a reasonable time if you request it, unless
10 disclosure of the information is prohibited by law.

11 ■ The duty to disclose to you in writing certain material adverse facts about a property, unless disclosure of the information is
12 prohibited by law (See Lines 47-55).

13 ■ The duty to protect your confidentiality. Unless the law requires it, the broker will not disclose your confidential information or the
14 confidential information of other parties (See Lines 22-39).

15 ■ The duty to safeguard trust funds and other property the broker holds.

16 ■ The duty, when negotiating, to present contract proposals in an objective and unbiased manner and disclose the advantages and
17 disadvantages of the proposals.

18 Please review this information carefully. A broker or salesperson can answer your questions about brokerage services, but if you
19 need legal advice, tax advice, or a professional home inspection, contact an attorney, tax advisor, or home inspector.

20 This disclosure is required by section 452.135 of the Wisconsin statutes and is for information only. It is a plain-language summary of
21 a broker's duties to a customer under section 452.133 (1) of the Wisconsin statutes.

22 **CONFIDENTIALITY NOTICE TO CUSTOMERS**

23 BROKER WILL KEEP CONFIDENTIAL ANY INFORMATION GIVEN TO BROKER IN CONFIDENCE, OR ANY INFORMATION
24 OBTAINED BY BROKER THAT HE OR SHE KNOWS A REASONABLE PERSON WOULD WANT TO BE KEPT CONFIDENTIAL,
25 UNLESS THE INFORMATION MUST BE DISCLOSED BY LAW OR YOU AUTHORIZE THE BROKER TO DISCLOSE PARTICULAR
26 INFORMATION. A BROKER SHALL CONTINUE TO KEEP THE INFORMATION CONFIDENTIAL AFTER BROKER IS NO LONGER
27 PROVIDING BROKERAGE SERVICES TO YOU.

28 THE FOLLOWING INFORMATION IS REQUIRED TO BE DISCLOSED BY LAW:

29 1. MATERIAL ADVERSE FACTS, AS DEFINED IN SECTION 452.01 (5g) OF THE WISCONSIN STATUTES (SEE LINES 47-55).

30 2. ANY FACTS KNOWN BY THE BROKER THAT CONTRADICT ANY INFORMATION INCLUDED IN A WRITTEN INSPECTION
31 REPORT ON THE PROPERTY OR REAL ESTATE THAT IS THE SUBJECT OF THE TRANSACTION.

32 TO ENSURE THAT THE BROKER IS AWARE OF WHAT SPECIFIC INFORMATION YOU CONSIDER CONFIDENTIAL, YOU MAY LIST
33 THAT INFORMATION BELOW (SEE LINES 35-36). AT A LATER TIME, YOU MAY ALSO PROVIDE THE BROKER WITH OTHER
34 INFORMATION YOU CONSIDER TO BE CONFIDENTIAL.

35 **CONFIDENTIAL INFORMATION:** _____

36

37 **NON-CONFIDENTIAL INFORMATION** (The following information may be disclosed by Broker): _____

38

39 *(INSERT INFORMATION YOU AUTHORIZE THE BROKER TO DISCLOSE SUCH AS FINANCIAL QUALIFICATION INFORMATION.)*

40 **CONSENT TO TELEPHONE SOLICITATION**

41 I/We agree that the Broker and any affiliated settlement service providers (for example, a mortgage company or title company) may
42 call our/my home or cell phone numbers regarding issues, goods and services related to the real estate transaction until I/we
43 withdraw this consent in writing. **List Home/Cell Numbers:** _____

44 **SEX OFFENDER REGISTRY**

45 *Notice: You may obtain information about the sex offender registry and persons registered with the registry by contacting the*
46 *Wisconsin Department of Corrections on the Internet at: <http://offender.doc.state.wi.us/public/> or by phone at 608-240-5830.*

47 **DEFINITION OF MATERIAL ADVERSE FACTS**

48 A "material adverse fact" is defined in Wis. Stat. § 452.01(5g) as an adverse fact that a party indicates is of such significance, or that
49 is generally recognized by a competent licensee as being of such significance to a reasonable party, that it affects or would affect
50 the party's decision to enter into a contract or agreement concerning a transaction or affects or would affect the party's decision
51 about the terms of such a contract or agreement. An "adverse fact" is defined in Wis. Stat. § 452.01(1e) as a condition or occurrence
52 that a competent licensee generally recognizes will significantly and adversely affect the value of the property, significantly reduce
53 the structural integrity of improvements to real estate, or present a significant health risk to occupants of the property; or information
54 that indicates that a party to a transaction is not able to or does not intend to meet his or her obligations under a contract or
55 agreement made concerning the transaction.

No representation is made as to the legal validity of any provision or the adequacy of any provision in any specific transaction.

Copyright 2007 by Wisconsin REALTORS® Association

Drafted by Attorney Debra Peterson Conrad