

# 20

## HENRY STREET LOWER EAST SIDE, NYC

Corner of Henry & Catherine Streets

RETAIL/RESTAURANT FOR LEASE

### APPROXIMATE SIZE

1,100 SF

### ASKING RENT

\$10,000/Month

### POSSESSION

Immediate

### TERM

5-15 Years

### FRONTAGE

50 FT

### COMMENTS

- Located on a great corner at the base of a brand-new luxury residential development
- Black-iron vent in place for a kitchen
- Steps from Dimes Square
- Façade can be made into accordion doors for indoor/outdoor seating
- Sidewalk seating available

### NEIGHBORS

Domino's • Bar Oliver • Calabria Pizza • Dreamers Coffee House • Dim Sum Go Go • Tria Diner • Luna Pizza • Panda • The Mandarin • Gingerchi • Great Taste Bakery • Good Diner • Cellar 36

### TRANSPORTATION



PROPERTY INFORMATION

### STEPHEN LIGAMBI

Senior Associate  
212.468.5985  
sligambi@meridiancapital.com

### BARI MUSACCHIO

Associate  
212.468.5950  
bmusacchio@meridiancapital.com



**MERIDIAN**  
RETAIL LEASING

All information supplied is from sources deemed reliable and is furnished subject to errors, omissions, modifications, removal of the listing from sale or lease, and to any listing conditions, including the rates and manner of payment of commissions for particular offerings imposed by Meridian Capital Group. This information may include estimates and projections prepared by Meridian Capital Group with respect to future events, and these future events may or may not actually occur. Such estimates and projections reflect various assumptions concerning anticipated results. While Meridian Capital Group believes these assumptions are reasonable, there can be no assurance that any of these estimates and projections will be correct. Therefore, actual results may vary materially from these estimates and projections. Any square footage dimensions set forth are approximate.



INTERIOR



STEPHEN LIGAMBI  
Senior Associate  
212.468.5985  
sligambi@meridiancapital.com

BARI MUSACCHIO  
Associate  
212.468.5950  
bmusacchio@meridiancapital.com

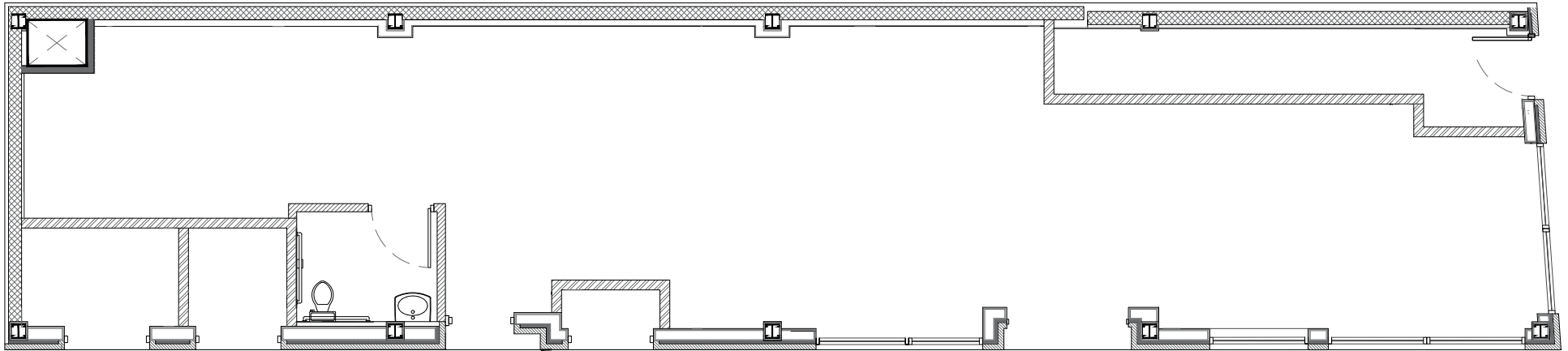


**MERIDIAN**  
RETAIL LEASING

# 20 HENRY STREET

LOWER EAST SIDE, NYC | Corner of Henry and Catherine Streets

RETAIL/RESTAURANT FOR LEASE



FLOOR PLAN

**STEPHEN LIGAMBI**  
Senior Associate  
212.468.5985  
sligambi@meridiancapital.com

**BARI MUSACCHIO**  
Associate  
212.468.5950  
bmusacchio@meridiancapital.com



**MERIDIAN**  
RETAIL LEASING

All information supplied is from sources deemed reliable and is furnished subject to errors, omissions, modifications, removal of the listing from sale or lease, and to any listing conditions, including the rates and manner of payment of commissions for particular offerings imposed by Meridian Capital Group. This information may include estimates and projections prepared by Meridian Capital Group with respect to future events, and these future events may or may not actually occur. Such estimates and projections reflect various assumptions concerning anticipated results. While Meridian Capital Group believes these assumptions are reasonable, there can be no assurance that any of these estimates and projections will be correct. Therefore, actual results may vary materially from these estimates and projections. Any square footage dimensions set forth are approximate.

# 20 HENRY STREET

LOWER EAST SIDE, NYC | Corner of Henry and Catherine Streets

## RETAIL/RESTAURANT FOR LEASE



NEIGHBORS

**STEPHEN LIGAMBI**  
Senior Associate  
212.468.5985  
sligambi@meridiancapital.com

**BARI MUSACCHIO**  
Associate  
212.468.5950  
bmusacchio@meridiancapital.com



**MERIDIAN**  
RETAIL LEASING

All information supplied is from sources deemed reliable and is furnished subject to errors, omissions, modifications, removal of the listing from sale or lease, and to any listing conditions, including the rates and manner of payment of commissions for particular offerings imposed by Meridian Capital Group. This information may include estimates and projections prepared by Meridian Capital Group with respect to future events, and these future events may or may not actually occur. Such estimates and projections reflect various assumptions concerning anticipated results. While Meridian Capital Group believes these assumptions are reasonable, there can be no assurance that any of these estimates and projections will be correct. Therefore, actual results may vary materially from these estimates and projections. Any square footage dimensions set forth are approximate.