

Eisenhauer Business Park - Building 3

San Antonio, TX

Key Facts

Property type	Industrial space
Building size	109,166 SF
Space available	21,998 - 50,796 SF



Contact Us

Learn more about this property or schedule a tour by reaching out to our local investment and leasing officer.

Barney Sinclair

+1 (214) 476-6554

barney.sinclair@eqtpartners.com

Caleb Parikh

+1 (404) 824-3904

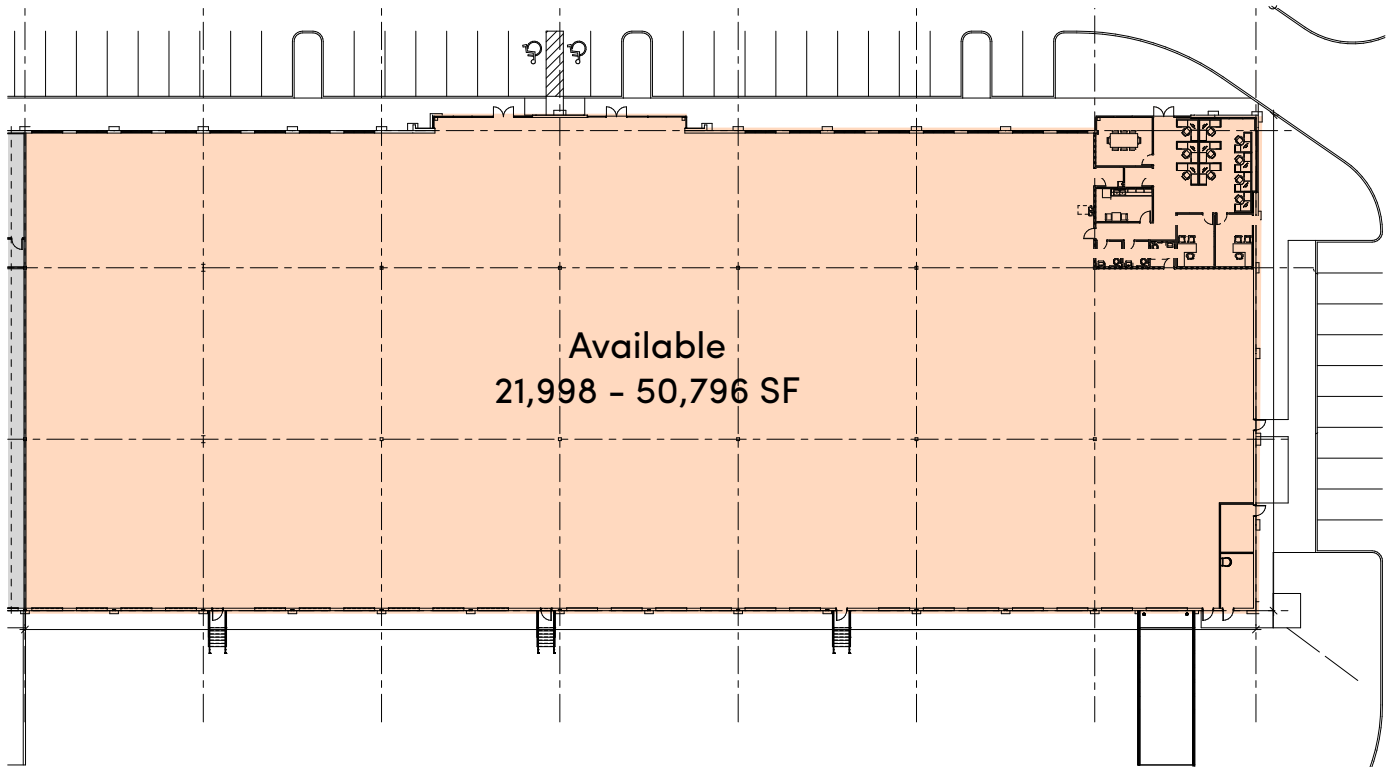
caleb.parikh@eqtpartners.com

Eisenhauer Business Park - Building 3

San Antonio, TX

BUILDING SPECIFICATIONS

Building Size: 109,166 SF	Drive-In Doors: 1 (12'x14')
Building Space Available: 21,998 - 50,796 SF	Building Depth: 140'
Office Space: 2,092 SF	Column Spacing: 50' D x 52' L
Clear Height: 28'	Shared Truck Court Depth: 200'
Loading Configuration: Rear Load	Car Parks: 1.53/1,000
Dock Doors: 22 (9'x10')	Fire Protection: ESFR Sprinkler System



Contact Us

Learn more about this property or schedule a tour by reaching out to our local investment and leasing officer.

Barney Sinclair

+1 (214) 476-6554

barney.sinclair@eqtpartners.com

Caleb Parikh

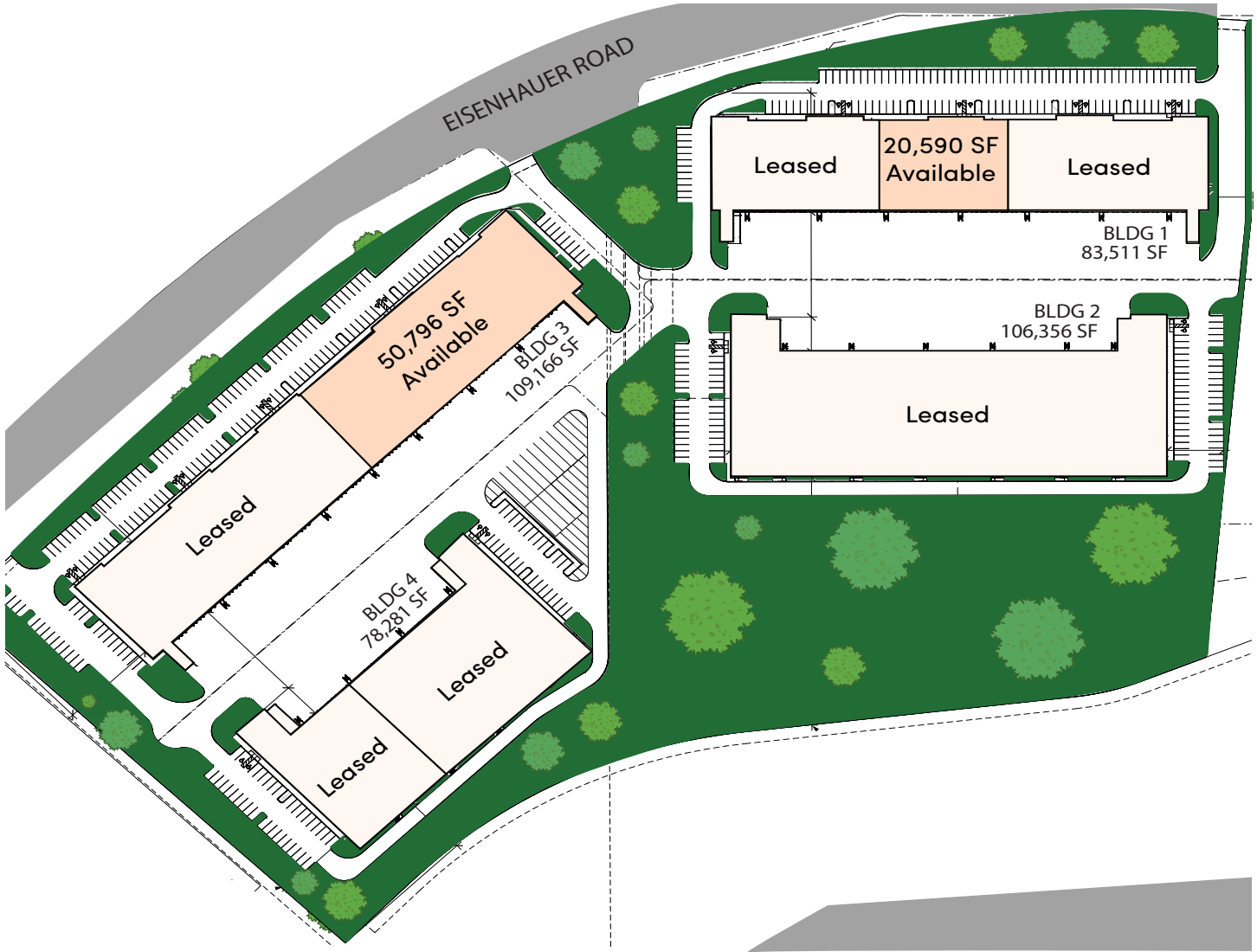
+1 (404) 824-3904

caleb.parikh@eqtpartners.com

Eisenhower Business Park - Building 3

San Antonio, TX

SITE PLAN



Contact Us

Learn more about this property or schedule a tour by reaching out to our local investment and leasing officer.

Barney Sinclair

+1 (214) 476-6554

barney.sinclair@eqtpartners.com

Caleb Parikh

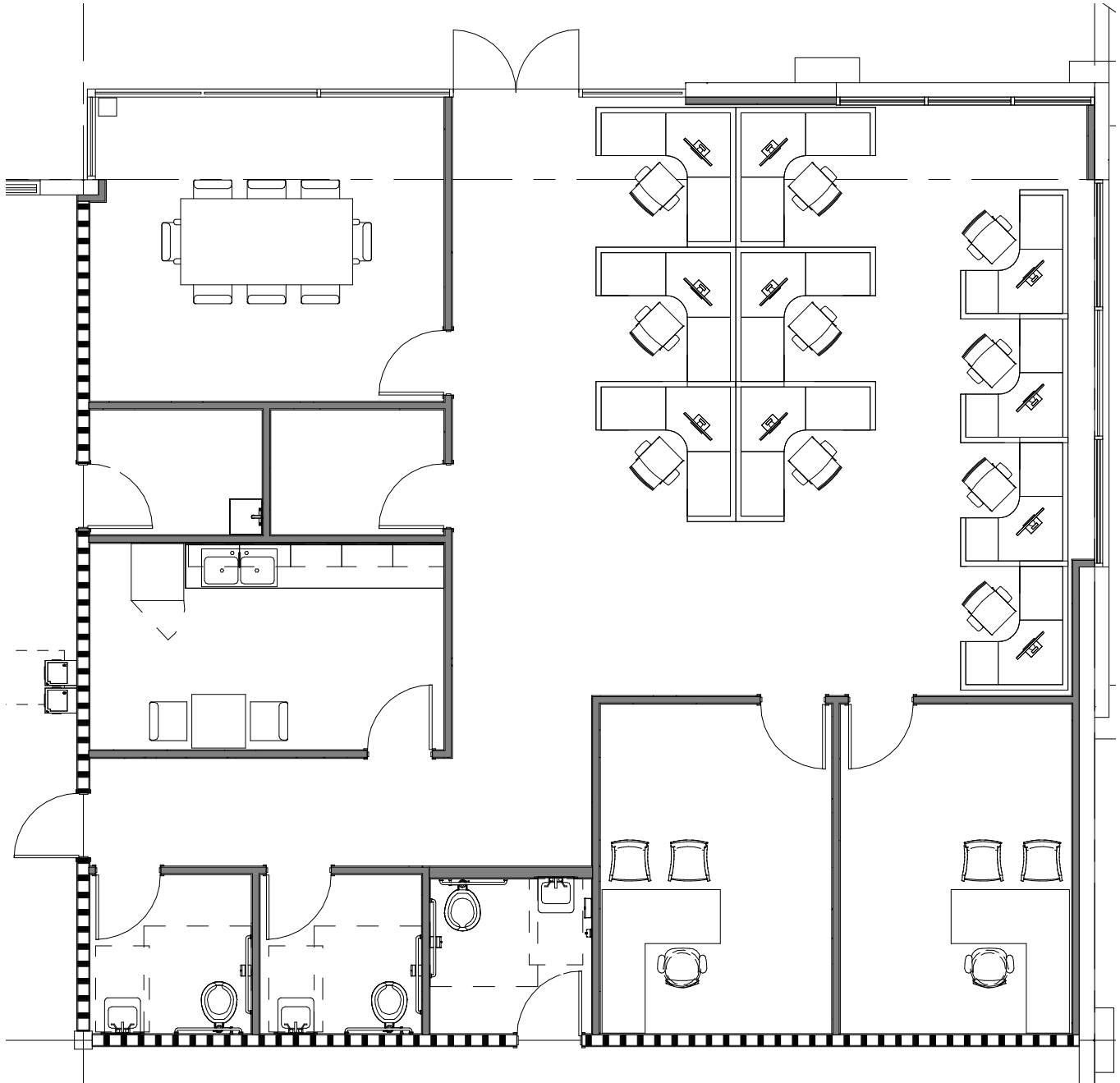
+1 (404) 824-3904

caleb.parikh@eqtpartners.com

Eisenhauer Business Park - Building 3

San Antonio, TX

OFFICE PLAN



Contact Us

Learn more about this property or schedule a tour by reaching out to our local investment and leasing officer.

Barney Sinclair

+1 (214) 476-6554

barney.sinclair@eqtpartners.com

Caleb Parikh

+1 (404) 824-3904

caleb.parikh@eqtpartners.com

Eisenhower Business Park - Building 3

San Antonio, TX



LOCATION ATTRIBUTES

- Premier infill distribution location
- Freeport Tax Abatement
- Located in a four building business park
- Access to dense labor/population base
- Easy access to IH-35, IH-10, Loop 1604, Hwy 281, IH-27, Fort Sam Houston and San Antonio International Airport

Contact Us

Learn more about this property or schedule a tour by reaching out to our local investment and leasing officer.

Barney Sinclair

+1 (214) 476-6554

barney.sinclair@eqtpartners.com

Caleb Parikh

+1 (404) 824-3904

caleb.parikh@eqtpartners.com