

# OFFICE SPACES AVAILABLE IN MARYLAND FARMS



*for more information, contact*

**TOM CORCORAN**

615.351.9254

[tcorcoran@southeastventure.com](mailto:tcorcoran@southeastventure.com)

**MICHAEL FINUCANE**

615.250.8671

[mfinucane@southeastventure.com](mailto:mfinucane@southeastventure.com)



**SOUTHEAST VENTURE**

615.833.8716 / [southeastventure.com](http://southeastventure.com)

NO PARKING

LOADING ZONE

# BUILDING INFORMATION



**ADDRESS** 105 Continental Place  
Brentwood, TN 37027

**SUBMARKET** Brentwood

**USE** Office

**AVAILABLE** Suite 160 - 2,750 SF  
Suite 200 - 12,486 SF *with demising options*  
Suite 250- 4,487 SF

**PARKING** 4:1000

## ADDITIONAL NOTES

Class A Office Building

Updated Lobby and Bathrooms



*for more information, contact*

# SUITE 106 / 2,750 SF

1st Floor

---

Available June 2026

---



*for more information, contact*

# SUITE 200 / 12,486 SF

2nd Floor

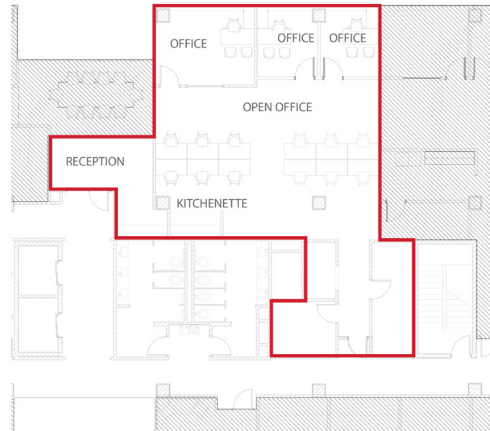


**Additional Demising on Next Page**

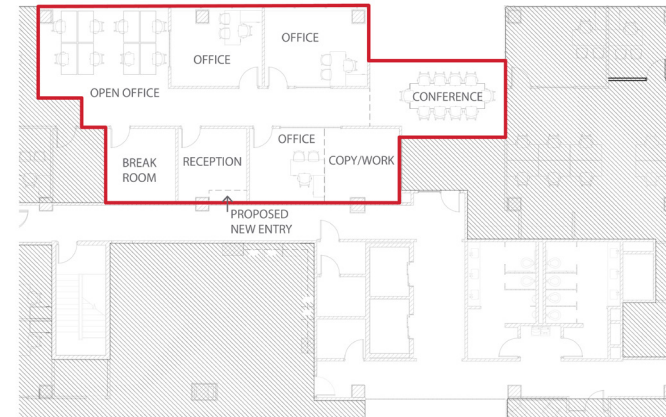
*for more information, contact*

# SUITE 200 / DEMISING OPTIONS

**OPTION A** 2,158 SF



**OPTION B** 2,055 SF



**OPTION C** 10,328 SF



**OPTION D** 4,216 SF



*for more information, contact*

# SUITE 250 / 4,487 SF

2nd Floor

Available June 1, 2026



*for more information, contact*

# LOCATION



**PRIME**  
**Maryland Farms Location**  
Fronting Old Hickory Blvd.



*for more information, contact*