

EASTPORT PLAZA

KING KULLEN ANCHORED SHOPPING CENTER

PROPERTY INFORMATION:

Street: 5 Eastport Manor Rd
City, State: Eastport, NY 11941
Sizes Available: 1,280 SF Available
 4,000 SF Available

PROPERTY HIGHLIGHTS:

- **Convenient Location:** Situated just off Sunrise Highway, the plaza provides easy access for both local residents and visitors.
- **Diverse Retail Options:** Anchored by a King Kullen supermarket, Eastport Plaza hosts a range of shopping, dining, and personal service establishments, catering to various customer needs.
- **Ample Parking:** The center offers plenty of parking spaces, ensuring a hassle-free experience for shoppers.
- **Upcoming Enhancements:** Plans are underway for upgrades and potential changes to the shopping center, aiming to enhance the overall shopping experience.

TENANTS:



DEMOGRAPHICS:	1 MILE	3 MILES	5 MILES
POPULATION	2,575	16,992	37,873
HOUSEHOLDS	915	5,730	13,690
AVG. HOUSEHOLD INCOME	\$140,065	\$150,732	\$140,579

CONTACT EXCLUSIVE BROKERS FOR DETAILS:

EDWARD GOTTLIEB, CRX, CLS
 LIC. Associate RE Broker
 ed@schuckmanrealty.com

JESSICA VILMENAY
 LIC. Associate RE Broker
 jessica@schuckmanrealty.com

KENNETH SCHUCKMAN
 LIC. RE Broker
 ken@schuckmanrealty.com

516-496-8888

schuckmanrealty.com

120 NORTH VILLAGE AVENUE / ROCKVILLE CENTRE, NY 11570



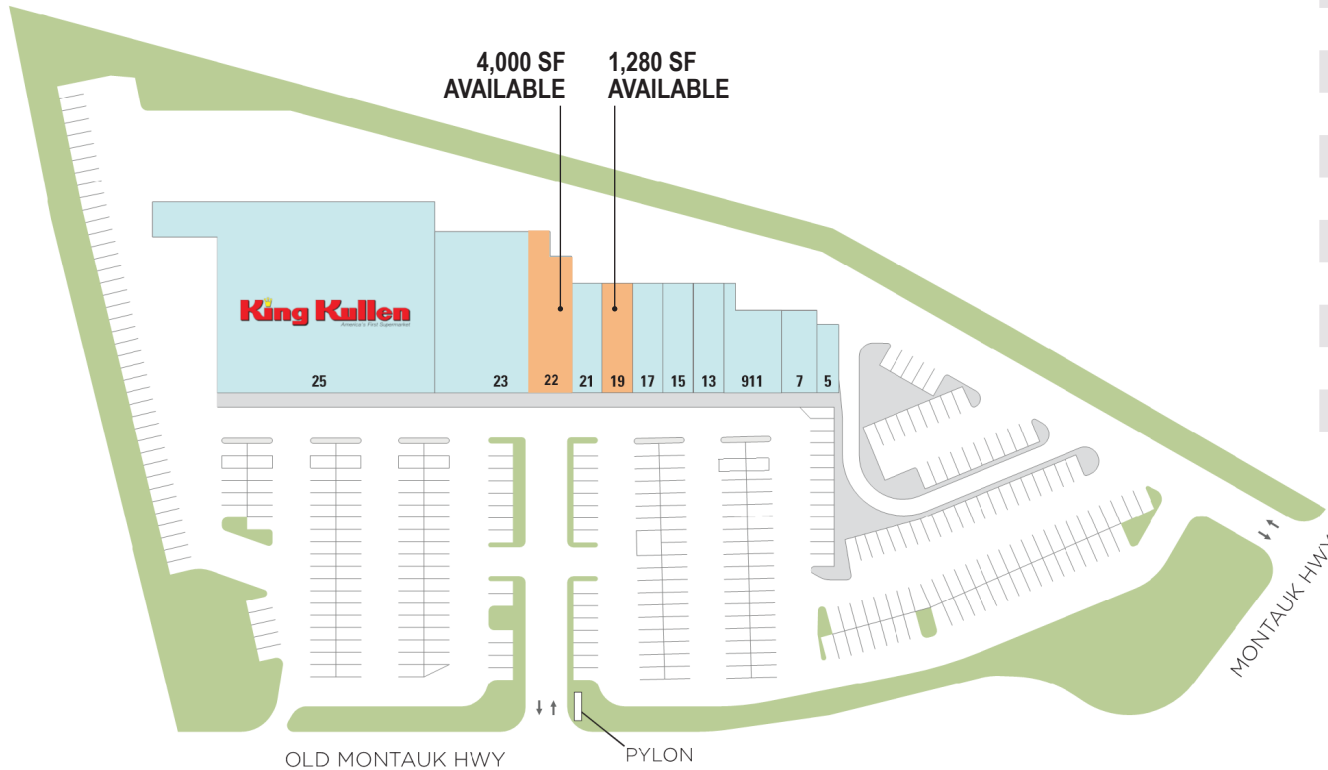
This information contained herein has been obtained from sources believed reliable. However, we have not verified it and make no guarantee, warranty or representation about it. It is submitted subject to the possibility of errors, omissions, change of price, rental and other conditions, prior sale, lease or financing, or withdrawal without notice. It is your responsibility to independently confirm its accuracy and completeness. Any projections, opinions, assumptions, or estimates used are for example only and they may not represent the current or future suitability, availability or performance of the property. You and your tax and legal advisors should conduct your own investigation of any property and transaction. We may or may not have an exclusive or nonexclusive contractual relationship with a tenant or the owner/landlord of a particular property; and if we do, such relationship shall be fully disclosed to you on a timely basis. Third-party trademarks, service marks, graphics, and logos belong to third parties. You are not granted any right or license with respect to Schuckman Realty Inc.'s trademarks service marks, graphics, and logos or the trademarks service marks, graphics, and logos of any third party. Kenneth Schuckman is Broker of record of Schuckman Realty Inc.

EASTPORT PLAZA

KING KULLEN ANCHORED SHOPPING CENTER

EXISTING CONDITIONS

CENTER SIZE: 47,637 SF



UNIT	TENANT	SF
25	KING KULLEN	22,400
23	AUTO ZONE	7,512
22	AVAILABLE	4,000
21	R&T MEDICAL P.C.	1,850
19	AVAILABLE	1,280
17	HOT WORX	1,545
15	EASTPORT WINE & SPIRITS	1,530
13	CAFÉ AT EASTPORT	1,600
911	MICHAELANGELO PIZZA	3,150
7	R&L JEWELERS	1,185
5	SUFFOLK FEDERAL	1,585

CONTACT EXCLUSIVE BROKERS FOR DETAILS:

EDWARD GOTTLIEB, CRX, CLS

LIC. Associate RE Broker

ed@schuckmanrealty.com

JESSICA VILMENAY

LIC. Associate RE Broker

jessica@schuckmanrealty.com

KENNETH SCHUCKMAN

LIC. RE Broker

ken@schuckmanrealty.com

516-496-8888

schuckmanrealty.com

120 NORTH VILLAGE AVENUE / ROCKVILLE CENTRE, NY 11570

This information contained herein has been obtained from sources believed reliable. However, we have not verified it and make no guarantee, warranty or representation about it. It is submitted subject to the possibility of errors, omissions, change of price, rental and other conditions, prior sale, lease or financing, or withdrawal without notice. It is your responsibility to independently confirm its accuracy and completeness. Any projections, opinions, assumptions, or estimates used are for example only and they may not represent the current or future suitability, availability or performance of the property. You and your tax and legal advisors should conduct your own investigation of any property and transaction. We may or may not have an exclusive or nonexclusive contractual relationship with a tenant or the owner/landlord of a particular property; and if we do, such relationship shall be fully disclosed to you on a timely basis. Third-party trademarks, service marks, graphics, and logos belong to third parties. You are not granted any right or license with respect to Schuckman Realty Inc.'s trademarks service marks, graphics, and logos or the trademarks service marks, graphics, and logos of any third party. Kenneth Schuckman is Broker of record of Schuckman Realty Inc.

EASTPORT PLAZA

KING KULLEN ANCHORED SHOPPING CENTER

RENDERING OF PROPOSED RENOVATION



*RENDERING: ALL SIGNAGE SUBJECT TO APPROVAL

CONTACT EXCLUSIVE BROKERS FOR DETAILS:

EDWARD GOTTLIEB, CRX, CLS

LIC. Associate RE Broker
ed@schuckmanrealty.com

JESSICA VILMENAY

LIC. Associate RE Broker
jessica@schuckmanrealty.com

KENNETH SCHUCKMAN

LIC. RE Broker
ken@schuckmanrealty.com

516-496-8888

schuckmanrealty.com

120 NORTH VILLAGE AVENUE / ROCKVILLE CENTRE, NY 11570

This information contained herein has been obtained from sources believed reliable. However, we have not verified it and make no guarantee, warranty or representation about it. It is submitted subject to the possibility of errors, omissions, change of price, rental and other conditions, prior sale, lease or financing, or withdrawal without notice. It is your responsibility to independently confirm its accuracy and completeness. Any projections, opinions, assumptions, or estimates used are for example only and they may not represent the current or future suitability, availability or performance of the property. You and your tax and legal advisors should conduct your own investigation of any property and transaction. We may or may not have an exclusive or nonexclusive contractual relationship with a tenant or the owner/landlord of a particular property; and if we do, such relationship shall be fully disclosed to you on a timely basis. Third-party trademarks, service marks, graphics, and logos belong to third parties. You are not granted any right or license with respect to Schuckman Realty Inc.'s trademarks service marks, graphics, and logos or the trademarks service marks, graphics, and logos of any third party. Kenneth Schuckman is Broker of record of Schuckman Realty Inc.

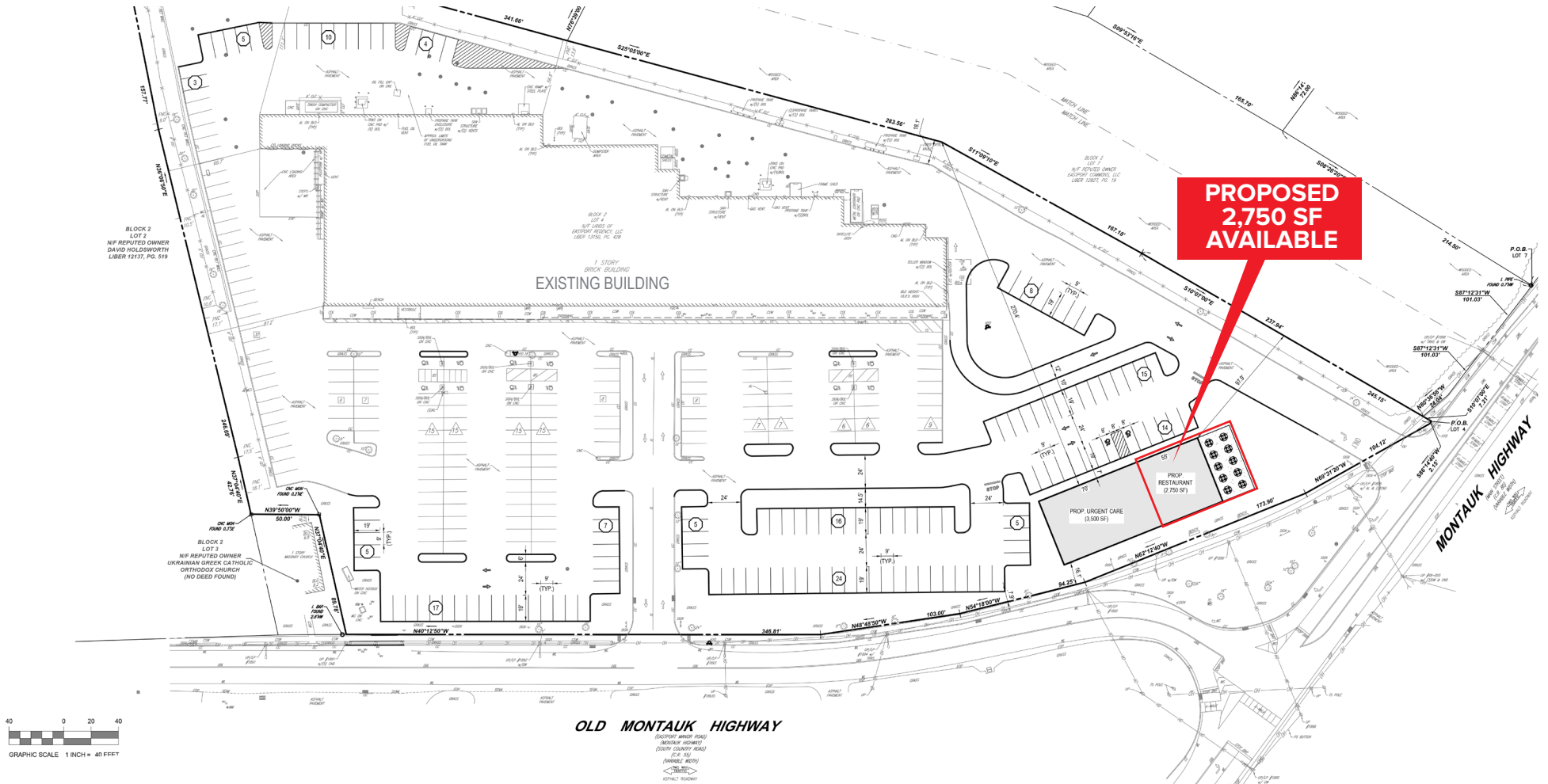
SCHUCKMAN®
REALTY INC.

Regency
Centers.

EASTPORT PLAZA

KING KULLEN ANCHORED SHOPPING CENTER

PROPOSED NEW PAD DEVELOPMENT



CONTACT EXCLUSIVE BROKERS FOR DETAILS:

EDWARD GOTTLIEB, CRX, CLS

LIC. Associate RE Broker

ed@schuckmanrealty.com

JESSICA VILMENAY

LIC. Associate RE Broker

jessica@schuckmanrealty.com

KENNETH SCHUCKMAN

LIC. RE Broker

ken@schuckmanrealty.com

516-496-8888

schuckmanrealty.com

120 NORTH VILLAGE AVENUE / ROCKVILLE CENTRE, NY 11570

This information contained herein has been obtained from sources believed reliable. However, we have not verified it and make no guarantee, warranty or representation about it. It is submitted subject to the possibility of errors, omissions, change of price, rental and other conditions, prior sale, lease or financing, or withdrawal without notice. It is your responsibility to independently confirm its accuracy and completeness. Any projections, opinions, assumptions, or estimates used are for example only and they may not represent the current or future suitability, availability or performance of the property. You and your tax and legal advisors should conduct your own investigation of any property and transaction. We may or may not have an exclusive or nonexclusive contractual relationship with a tenant or the owner/landlord of a particular property; and if we do, such relationship shall be fully disclosed to you on a timely basis. Third-party trademarks, service marks, graphics, and logos belong to third parties. You are not granted any right or license with respect to Schuckman Realty Inc.'s trademarks service marks, graphics, and logos or the trademarks service marks, graphics, and logos of any third party. Kenneth Schuckman is Broker of record of Schuckman Realty Inc.

EASTPORT PLAZA

KING KULLEN ANCHORED SHOPPING CENTER

PROPOSED PAD ELEVATIONS



East Elevation
N.T.S



North Elevation
N.T.S



South Elevation
N.T.S



West Elevation
N.T.S

Note: Actual signage design and application are by separate application.

CONTACT EXCLUSIVE BROKERS FOR DETAILS:

EDWARD GOTTLIEB, CRX, CLS

LIC. Associate RE Broker
ed@schuckmanrealty.com

JESSICA VILMENAY

LIC. Associate RE Broker
jessica@schuckmanrealty.com

KENNETH SCHUCKMAN

LIC. RE Broker
ken@schuckmanrealty.com

516-496-8888

schuckmanrealty.com

120 NORTH VILLAGE AVENUE / ROCKVILLE CENTRE, NY 11570

This information contained herein has been obtained from sources believed reliable. However, we have not verified it and make no guarantee, warranty or representation about it. It is submitted subject to the possibility of errors, omissions, change of price, rental and other conditions, prior sale, lease or financing, or withdrawal without notice. It is your responsibility to independently confirm its accuracy and completeness. Any projections, opinions, assumptions, or estimates used are for example only and they may not represent the current or future suitability, availability or performance of the property. You and your tax and legal advisors should conduct your own investigation of any property and transaction. We may or may not have an exclusive or nonexclusive contractual relationship with a tenant or the owner/landlord of a particular property; and if we do, such relationship shall be fully disclosed to you on a timely basis. Third-party trademarks, service marks, graphics, and logos belong to third parties. You are not granted any right or license with respect to Schuckman Realty Inc.'s trademarks service marks, graphics, and logos or the trademarks service marks, graphics, and logos of any third party. Kenneth Schuckman is Broker of record of Schuckman Realty Inc.

EASTPORT PLAZA

KING KULLEN ANCHORED SHOPPING CENTER



CONTACT EXCLUSIVE BROKERS FOR DETAILS:

EDWARD GOTTLIEB, CRX, CLS

LIC. Associate RE Broker
ed@schuckmanrealty.com

JESSICA VILMENAY

LIC. Associate RE Broker
jessica@schuckmanrealty.com

KENNETH SCHUCKMAN

LIC. RE Broker
ken@schuckmanrealty.com

516-496-8888

schuckmanrealty.com

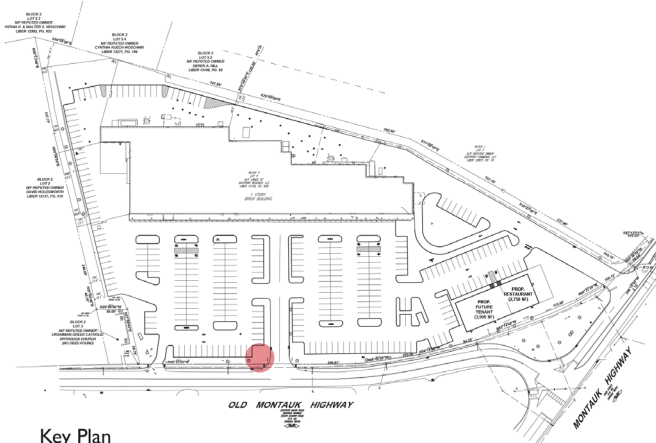
120 NORTH VILLAGE AVENUE / ROCKVILLE CENTRE, NY 11570

This information contained herein has been obtained from sources believed reliable. However, we have not verified it and make no guarantee, warranty or representation about it. It is submitted subject to the possibility of errors, omissions, change of price, rental and other conditions, prior sale, lease or financing, or withdrawal without notice. It is your responsibility to independently confirm its accuracy and completeness. Any projections, opinions, assumptions, or estimates used are for example only and they may not represent the current or future suitability, availability or performance of the property. You and your tax and legal advisors should conduct your own investigation of any property and transaction. We may or may not have an exclusive or nonexclusive contractual relationship with a tenant or the owner/landlord of a particular property; and if we do, such relationship shall be fully disclosed to you on a timely basis. Third-party trademarks, service marks, graphics, and logos belong to third parties. You are not granted any right or license with respect to Schuckman Realty Inc.'s trademarks service marks, graphics, and logos or the trademarks service marks, graphics, and logos of any third party. Kenneth Schuckman is Broker of record of Schuckman Realty Inc.

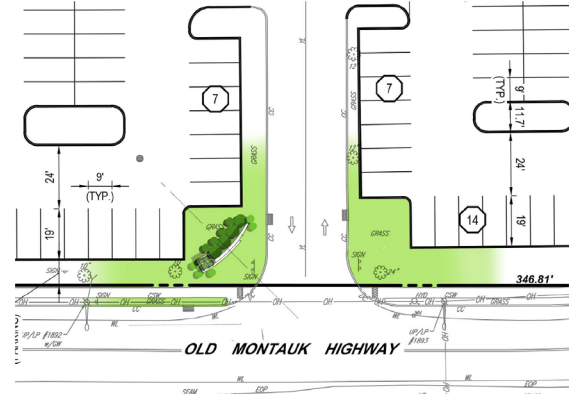
EASTPORT PLAZA

KING KULLEN ANCHORED SHOPPING CENTER

PROPOSED NEW MONUMENT SIGNAGE



Key Plan
N.T.S



Plan
N.T.S



CONTACT EXCLUSIVE BROKERS FOR DETAILS:

EDWARD GOTTLIEB, CRX, CLS

LIC. Associate RE Broker

ed@schuckmanrealty.com

JESSICA VILMENAY

LIC. Associate RE Broker

jessica@schuckmanrealty.com

KENNETH SCHUCKMAN

LIC. RE Broker

ken@schuckmanrealty.com

516-496-8888

schuckmanrealty.com

120 NORTH VILLAGE AVENUE / ROCKVILLE CENTRE, NY 11570

SCHUCKMAN®
REALTY INC.

Regency®
Centers.

This information contained herein has been obtained from sources believed reliable. However, we have not verified it and make no guarantee, warranty or representation about it. It is submitted subject to the possibility of errors, omissions, change of price, rental and other conditions, prior sale, lease or financing, or withdrawal without notice. It is your responsibility to independently confirm its accuracy and completeness. Any projections, opinions, assumptions, or estimates used are for example only and they may not represent the current or future suitability, availability or performance of the property. You and your tax and legal advisors should conduct your own investigation of any property and transaction. We may or may not have an exclusive or nonexclusive contractual relationship with a tenant or the owner/landlord of a particular property; and if we do, such relationship shall be fully disclosed to you on a timely basis. Third-party trademarks, service marks, graphics, and logos belong to third parties. You are not granted any right or license with respect to Schuckman Realty Inc.'s trademarks service marks, graphics, and logos or the trademarks service marks, graphics, and logos of any third party. Kenneth Schuckman is Broker of record of Schuckman Realty Inc.