



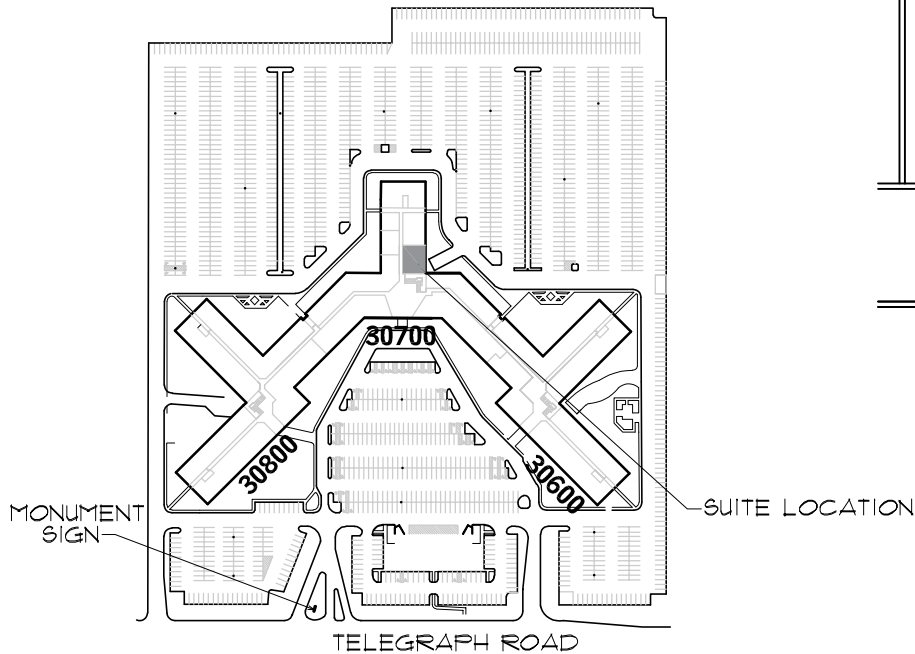
# BINGHAM OFFICE CENTER

**BINGHAM FARMS, MI 48025**

**CONTACT:**

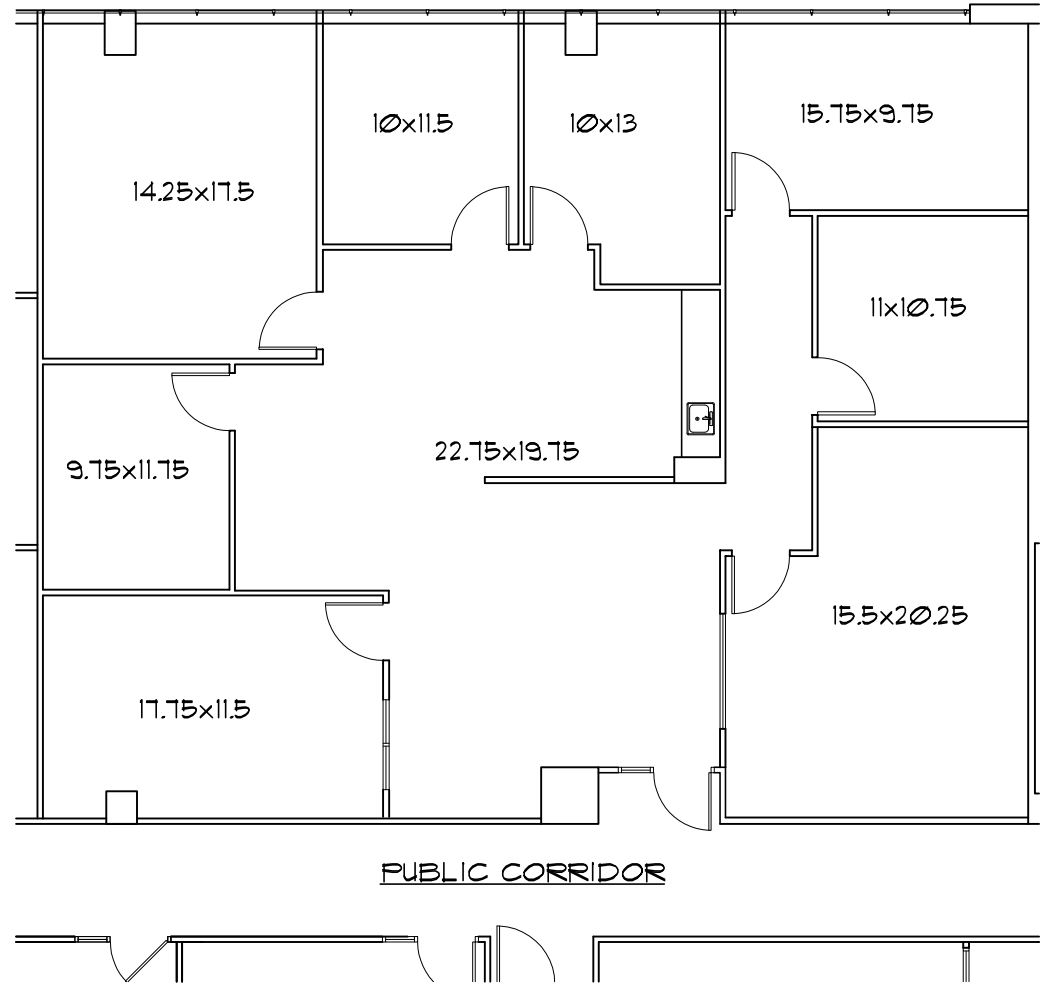
**SHEILA FOGARTY (248) 686-5982**

- \* Newly renovated complex
- \* 24 hour security system
- \* After hours security guard on site
- \* Cafe, Sundry shop and ATM
- \* Professional on site management and maintenance
- \* Efficient energy management system
- \* Ample parking
- \* Easy access to all major thorough fares



**KEY PLAN**

NO SCALE



## SUITE 1515

2,394 R.S.F.

SCALE: 1"=10'-0"

NOTE: ALL ROOM SIZES ARE APPROXIMATE

**NAI Farbman**

Commercial Real Estate Services, Worldwide.