

**FOR LEASE**

Owned and Operated by  **LINK**

# INTERNATIONAL AIRPORT CENTER

615 Westport Parkway, Grapevine, Texas

## 220,265 SF



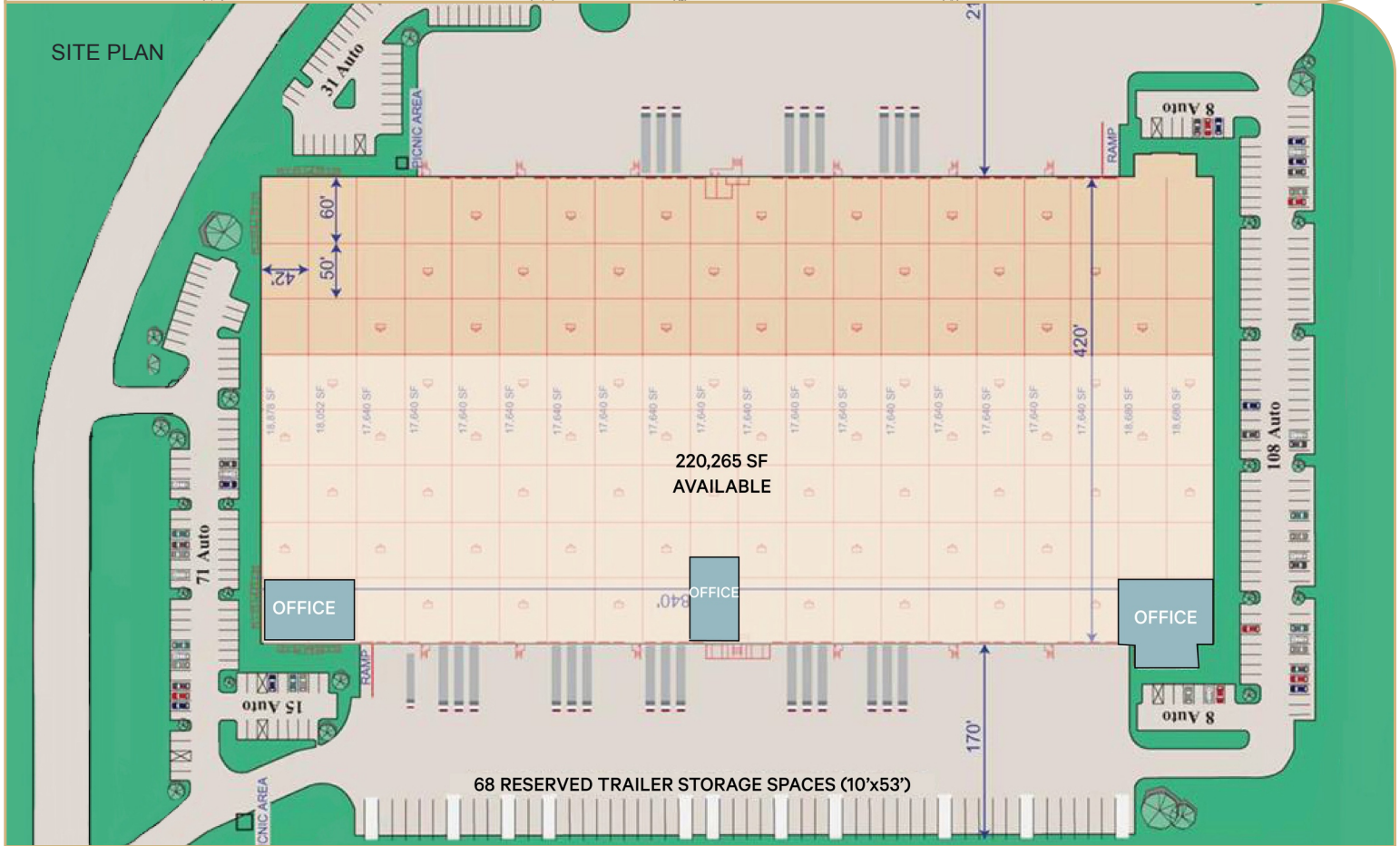
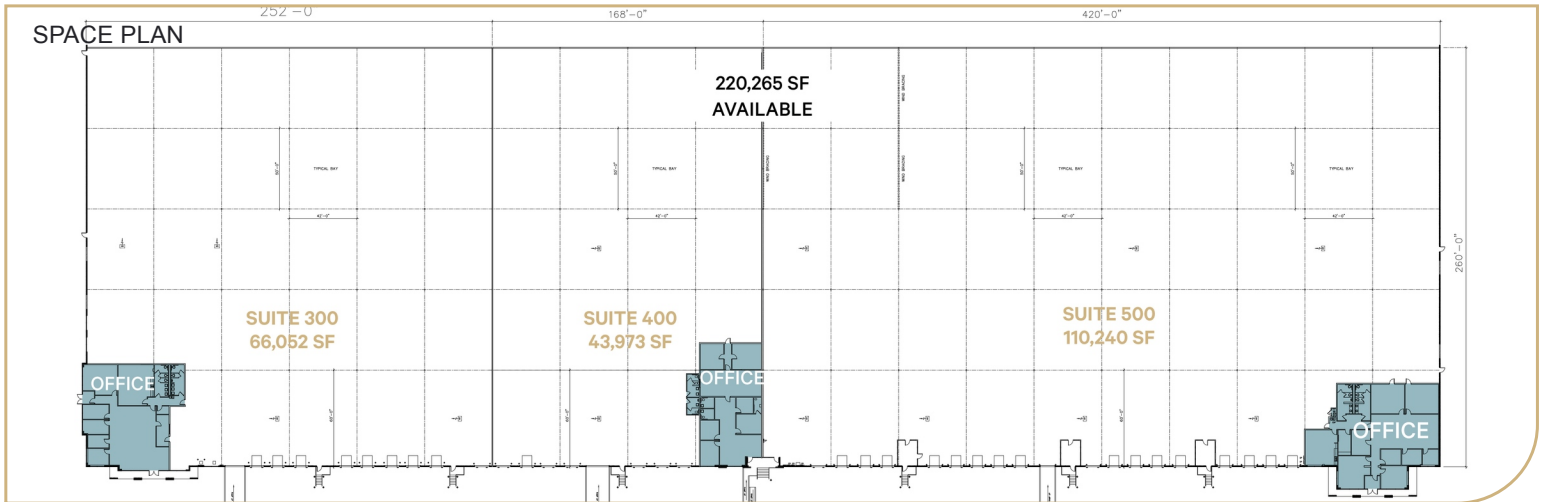
### LEASING INFO & CONTACT

Steve Koldyke  
Brian Gilchrist

(214 979 6381 / [steve.koldyke@cbre.com](mailto:steve.koldyke@cbre.com)  
214 979 6394 / [brian.gilchrist@cbre.com](mailto:brian.gilchrist@cbre.com)



This is not an offer or acceptance of an offer to lease space. A lease will only be offered or made in a written agreement signed by landlord. No representation or warranty of any kind is made by landlord unless set forth in a written definitive lease executed by the landlord.



**PROPERTY DETAILS**

220,265 SF Available for Lease

11,187 SF Office (3 Office Pods)

32' Clear Height

(35) Dock Doors (25 Pit Levelers Installed)

(3) Ramp Doors

Heavy Parking

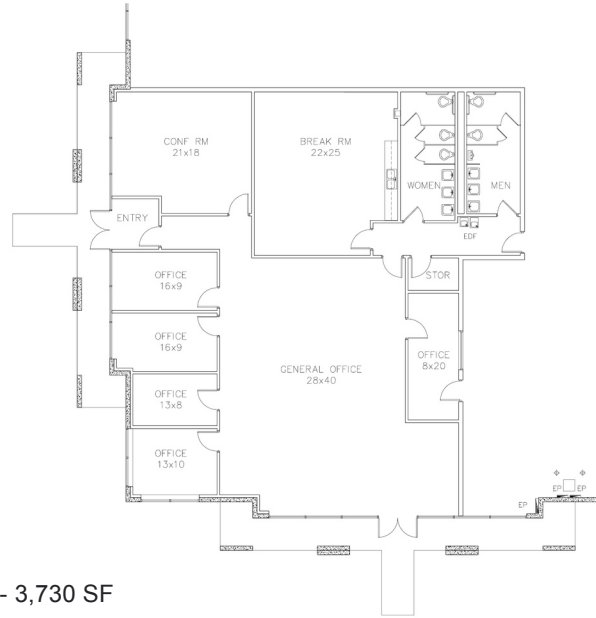
Trailer Storage Available

170' Truck Court

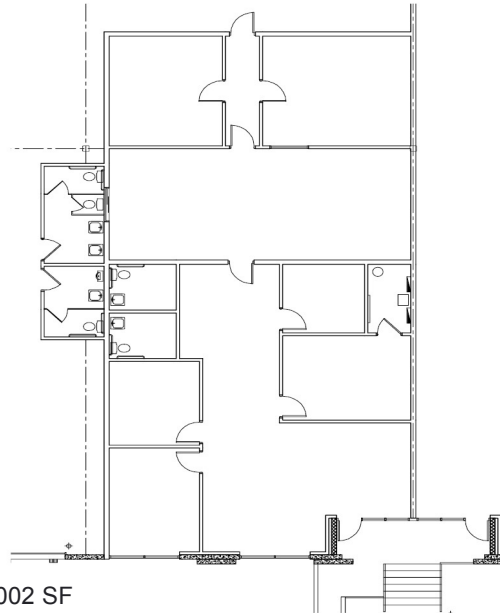
50'x42' Column Spacing

ESFR Sprinkler System

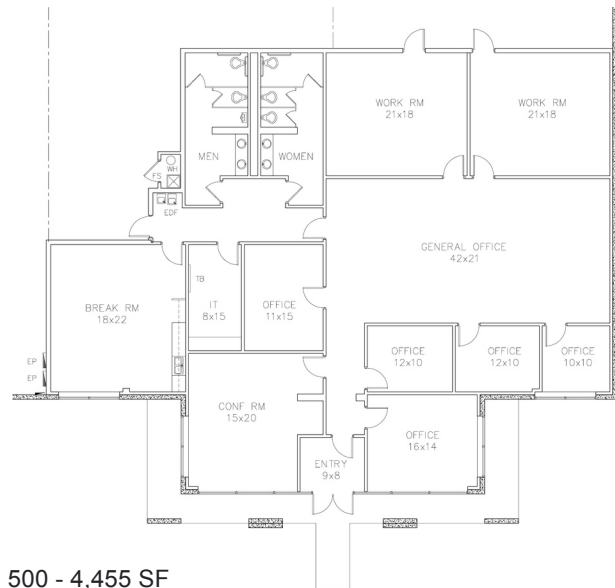
International Airport Center has direct access to DFW International Airport with access to major thoroughfares.



Suite 300 - 3,730 SF



Suite 400 - 3,002 SF



Suite 500 - 4,455 SF

For Information Contact

Steve Koldyke

214 979 6382

steve.koldyke@cbre.com

Brian Gilchrist

214 979 6394

brian.gilchrist@cbre.com