

For Lease

Glendale Ave. & S. 15th St.



LOGIC



1565-1575 Glendale Ave.
Sparks, NV 89431

Michael Keating, SIOR
Partner
775.386.9727
mkeating@logicCRE.com
S.0174942

Michael Dorn
Senior Associate
775.453.4436
mdorn@logicCRE.com
S.0189635

Listing Snapshot



\$1.20 PSF NNN
Lease Rate



± 2,000 - 6,000 SF
Available Square Footage



\$0.24 PSF
Estimate NNN Expense

Property Highlights

- Ideally sized flex industrial suites
- Fully gated parking
- Automotive users allowed
- Glendale monument signage available
- HVAC in office & warehouse is Reznor heated

Demographics

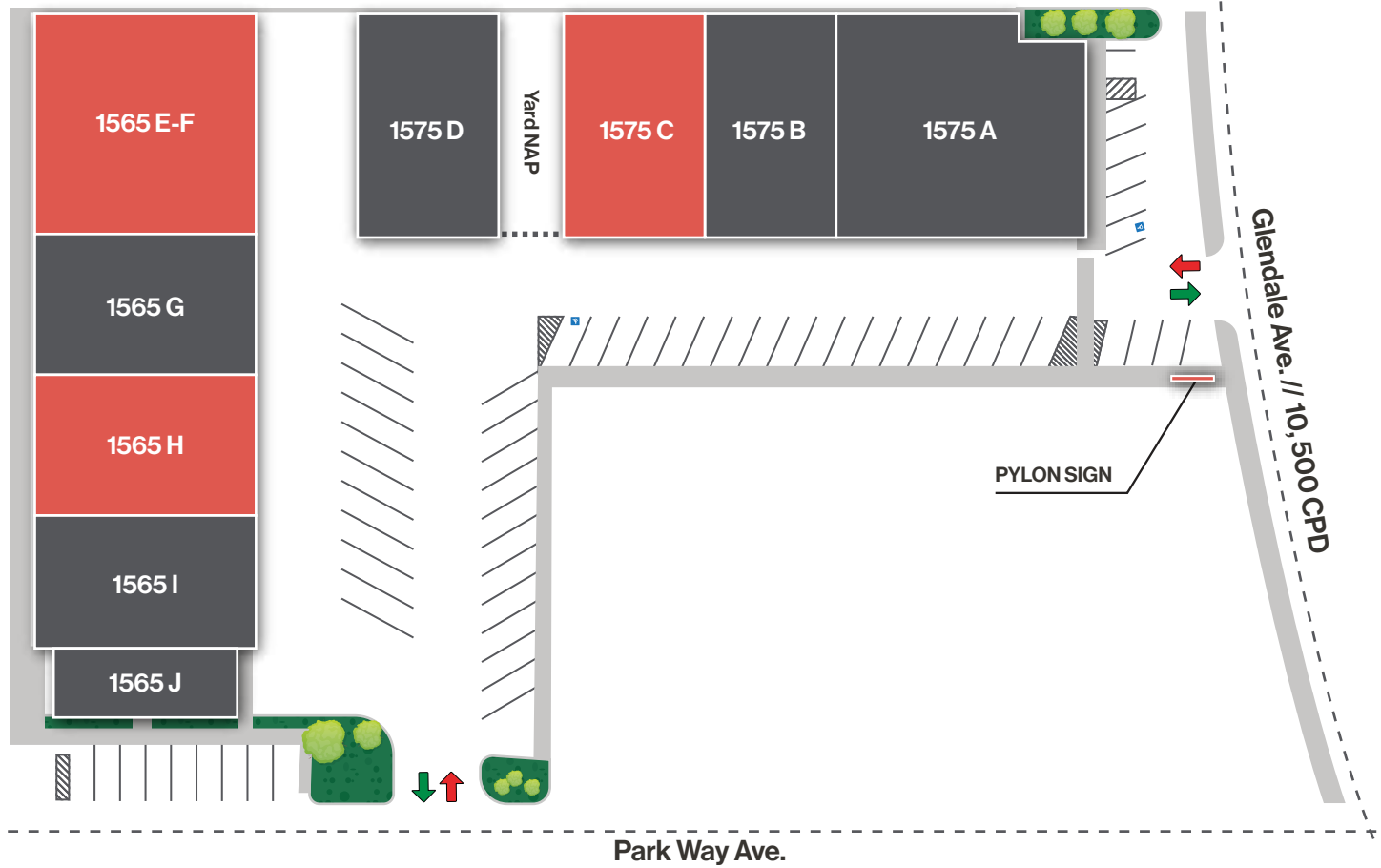
	1-mile	3-mile	5-mile
2024 Population	6,260	124,916	247,837
2024 Average Household Income	\$73,008	\$76,485	\$91,069
2024 Total Households	3,072	51,400	102,039





Site Plan

Available NAP





\$1.20 PSF NNN

Lease Rate

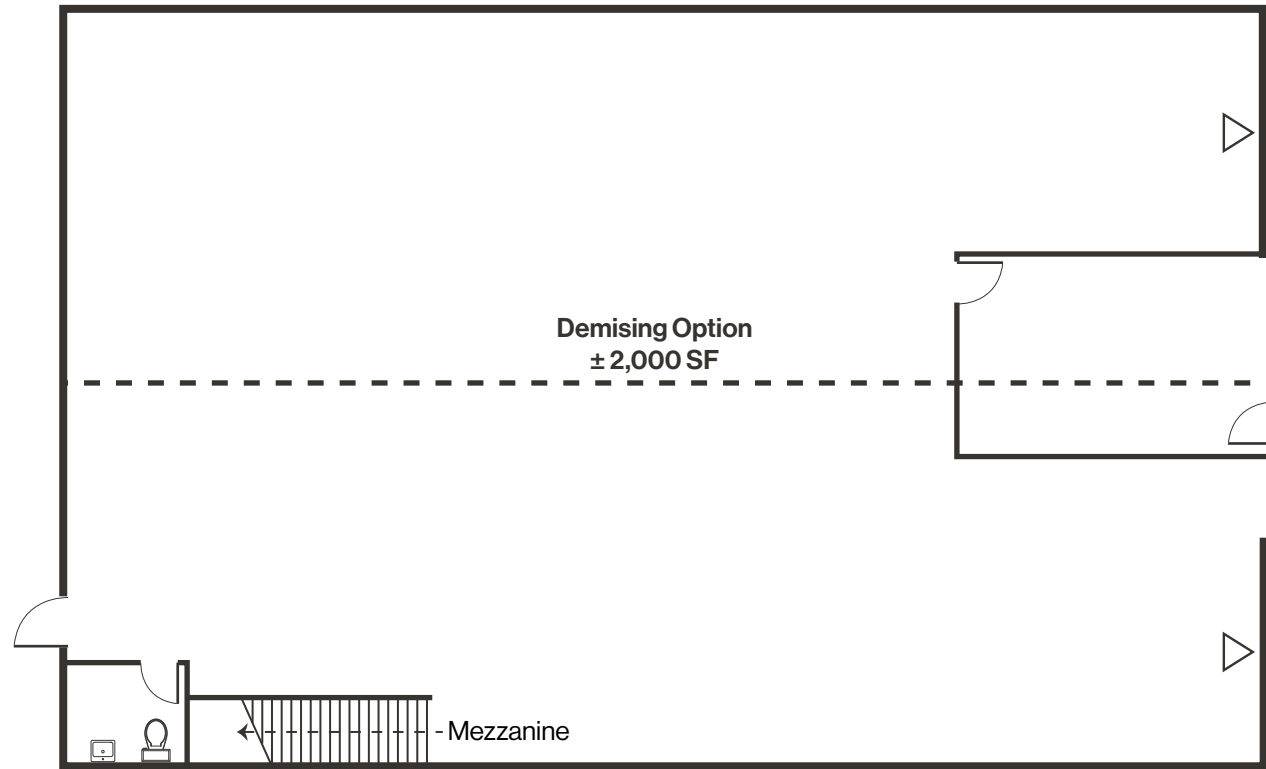


± 2,000 – 4,000 SF

Square Footage

- Two (2) roll-up doors (12'x14')
- Two (2) Reznor heaters
- One (1) restroom
- Open entry/office area
- HVAC in office
- Eight (8) skylights
- Clear height: 14'-17'
- 200 Amp, 208V, 3-phase power

[Click for a Virtual Tour](#) 





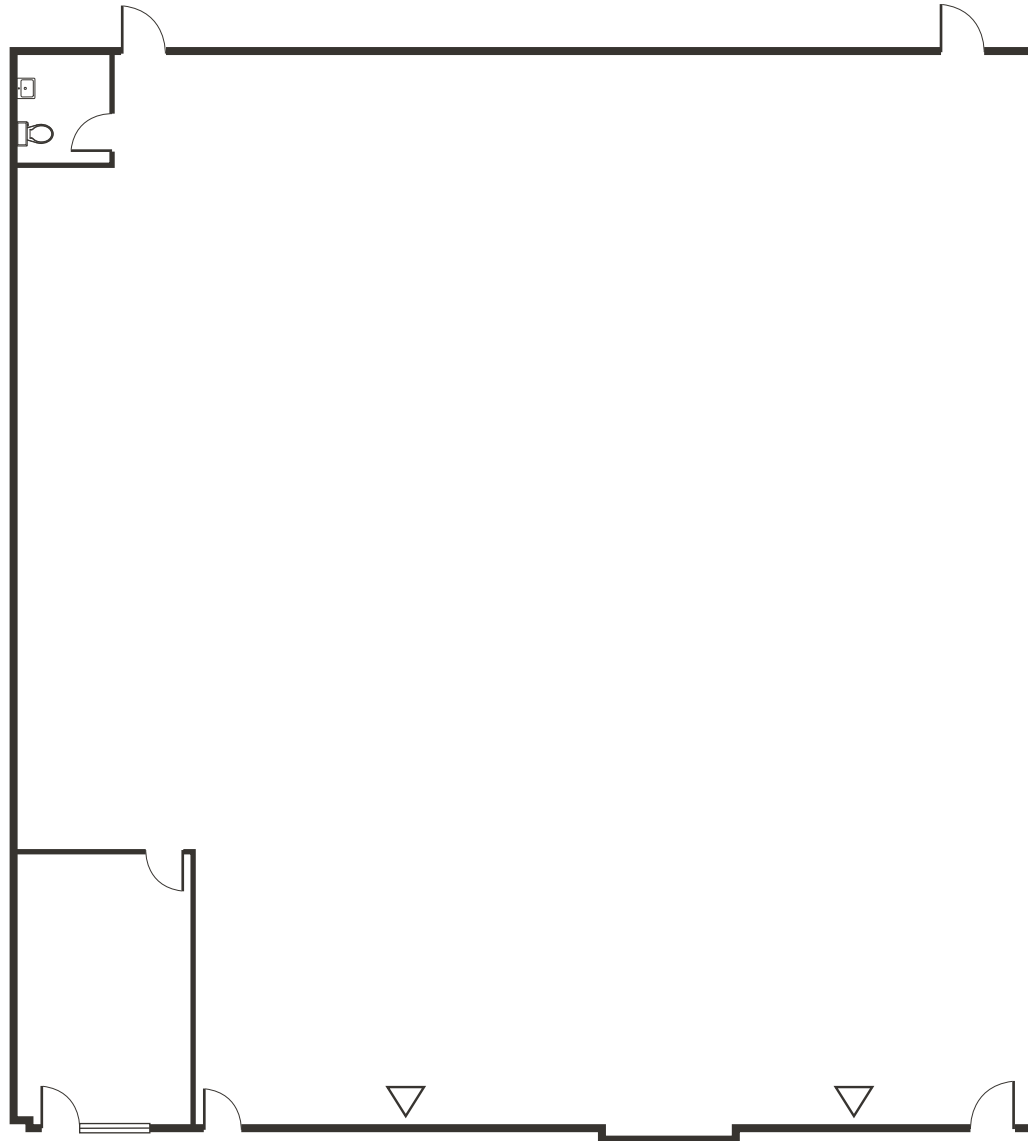
\$1.20 PSF NNN
Lease Rate



± 6,000 SF
Square Footage

- Two (2) roll-up doors (14'x14')
- Three (3) Reznor heaters
- One (1) restroom
- Eleven (11) skylights
- Clear height: 14'-17'
- HVAC in office
- 200 Amp, 208V, 3-phase power

[Click for a Virtual Tour](#) 



Floor Plan | Suite 1575 C

 Roll-Up Doors

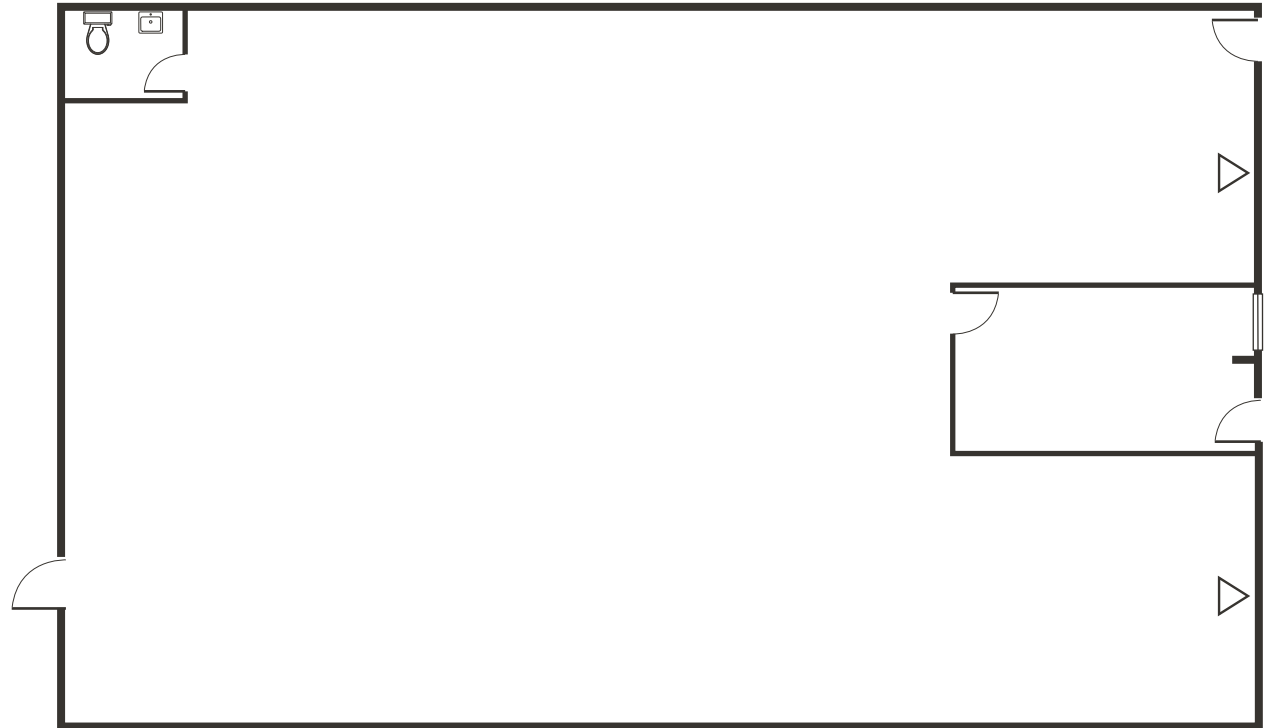


\$1.20 PSF NNN
Lease Rate



± 4,000 SF
Square Footage

- Two (2) roll-up doors (12'x14')
- Two (2) Reznor heaters
- One (1) restroom
- Eight (8) skylights
- Clear height: 14'-17'
- 100 Amp, 208V, 3-phase power



[Click for a Virtual Tour](#) 

Property Photos



LOGIC Commercial Real Estate

Specializing in Brokerage and Receivership Services



Join our email list and
connect with us on LinkedIn

The information herein was obtained from sources deemed reliable; however LOGIC Commercial Real Estate makes no guarantees, warranties or representation as to the completeness or accuracy thereof.

For inquiries please reach out to our team.

Michael Keating, SIOR

Partner
775.386.9727
mkeating@logicCRE.com
S.0174942

Michael Dorn

Senior Associate
775.453.4436
mdorn@logicCRE.com
S.0189635