



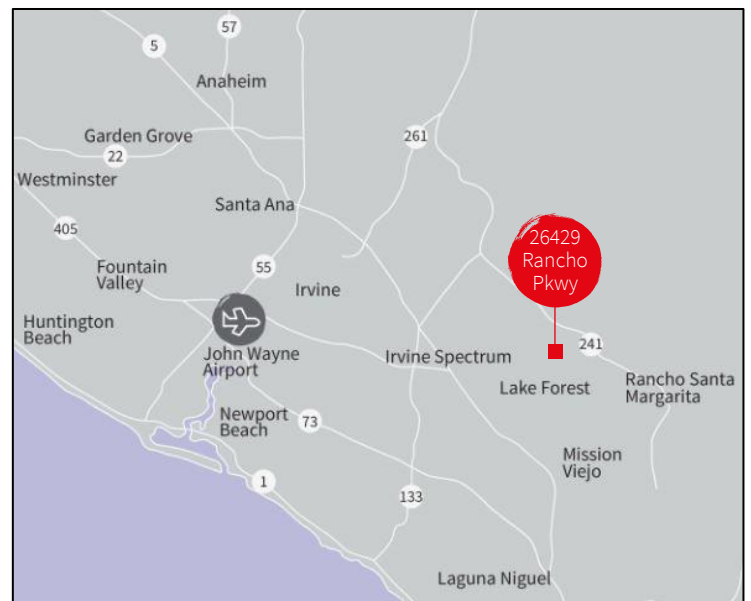
For Lease

26429 Rancho Parkway, Unit 125
Lake Forest, California 92630

±2,638 s.f. office + warehouse unit

Highlights

- ±2,638 s.f. high-image office, R&D and warehouse unit
- ± 1,857 s.f. two-story, open-plan office space
- ±781 s.f. of warehouse area
- Double-door warehouse loading
- 22' high-bay warehouse clearance
- Excellent signage available along 241 Corridor -36,000 cars/day
- Immediate access to the 241 Toll Road via Alton Parkway
- Flexible zoning allows for a wide range of uses including retail, office, R&D and industrial



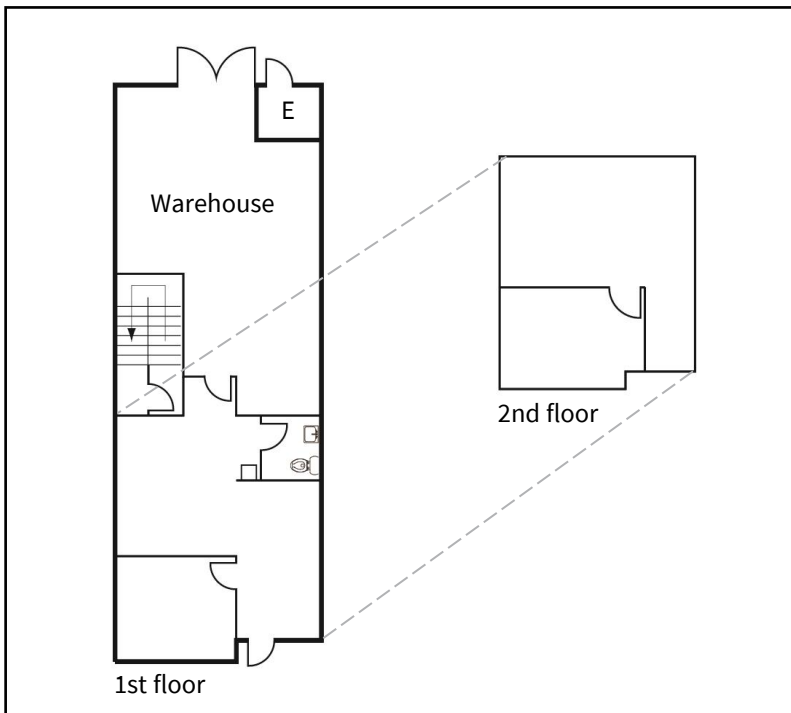
Zach Niles
T +1 949 885 2922
E zach.niles@jll.com
Lic. #01311756

Xavier Nolasco
T +1 949 296 3622
E xavier.nolasco@jll.com
Lic. #01911759

Steve Wagner
T +1 949 885 2923
E steve.wagner@jll.com
Lic. #01314652

26429 Rancho Parkway, Unit 125

Lake Forest, California 92630



Property specifications

- ±2,638 s.f. high-image office, R&D and warehouse unit
- ± 1,857 s.f. two-story, open-plan office space
- ±781 s.f. of warehouse area
- Double-door warehouse loading
- 22' high-bay warehouse clearance
- Excellent signage available along 241 Corridor -36,000 cars/day
- Immediate access to the 241 Toll Road via Alton Parkway
- Flexible zoning allows for a wide range of uses including retail, office, R&D and industrial



Zach Niles
T +1 949 885 2922
E zach.niles@jll.com
Lic. #01311756

Xavier Nolasco
T +1 949 296 3622
E xavier.nolasco@jll.com
Lic. #01911759

Steve Wagner
T +1 949 885 2923
E steve.wagner@jll.com
Lic. #01314652