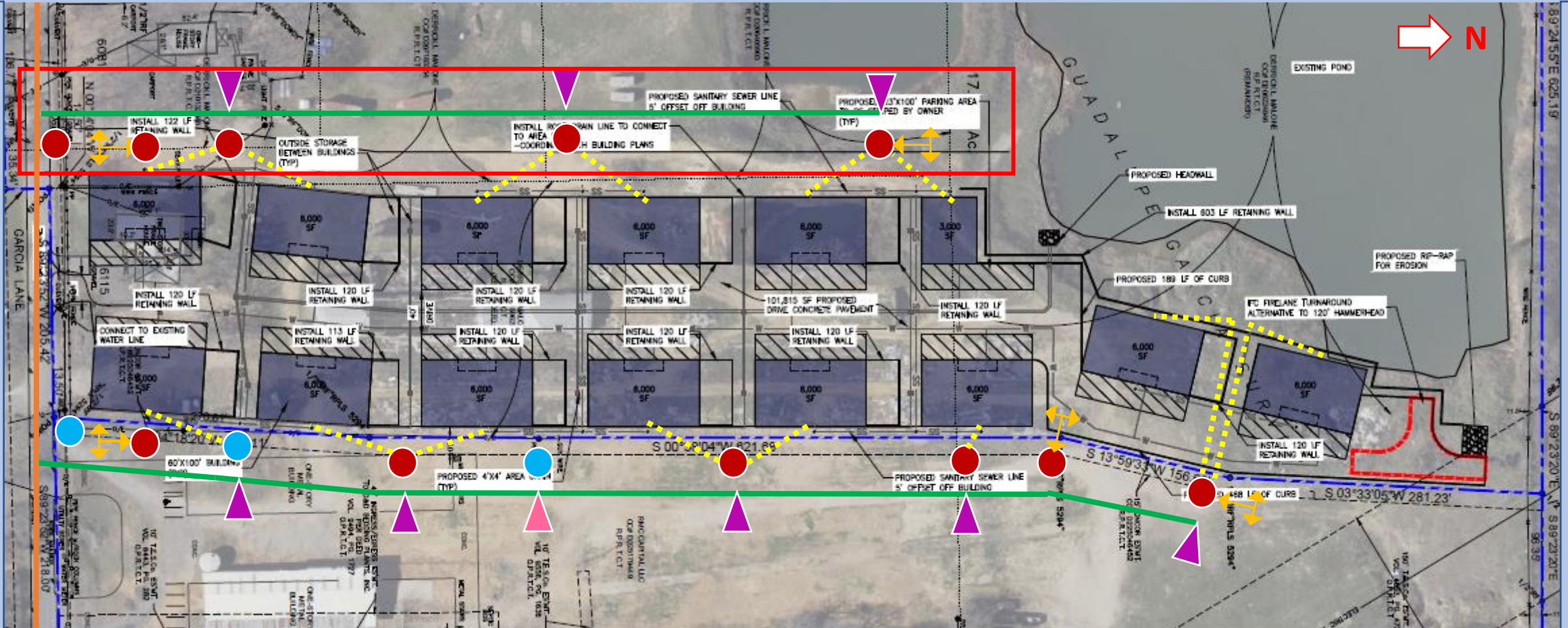


This drawing is a representation only and does not accurately depict the actual locations of Oncor facilities in the field.

Oncor will not start construction until full payment is made and all easements are filed.



Map Key:

- **Blue Circle:** Existing Pole
- **Marron Circle:** New Pole
- **Orange Triple Arrow:** New Guy Wire with Anchor
- **Purple Triangle:** 3ph Overhead Transformer Bank
- **Pink Triangle:** 1ph Overhead Transformer Bank
- **Green Line:** New Overhead 3ph Primary
- **Orange Line:** Oncor off-site upgrade work
- **Yellow Dashed Line:** Underground service wire
- **Red Rectangle:** New 15' wide easement area.

Oncor Responsibilities:

- Overhead powerline construction
- Supplying and installing service wires
- Offsite powerline upgrade construction

Customer Responsibilities:

- Provide an exhibit "A" for new easement
- Trench and install service conduits.