

2632 LA CINENEGA AVE LOS ANGELES

FOR LEASE

CREATIVE OFFICE
±1,200 RSF



INDUSTRYPARTNERS.COM

CA BRE No. 01900833

ELLIOT SCHWARTZ

ES@INDUSTRYPARTNERS.COM

CA BRE NO. 02020686

ADDRESS	AVAILABLE RSF	RATE	TERM	OCCUPANCY	PARKING
2632 La Cinenega Ave	±1,200 RSF	\$4.50/SF per Mo. MG	3-10 Year	Immediate	Gated Parking 5 Parking Spaces included Additional parking at \$185/space in the gated lot

Creative Office

FEATURES

Culver Adjacent (Culver City Arts District)

High Ceilings

Skylights

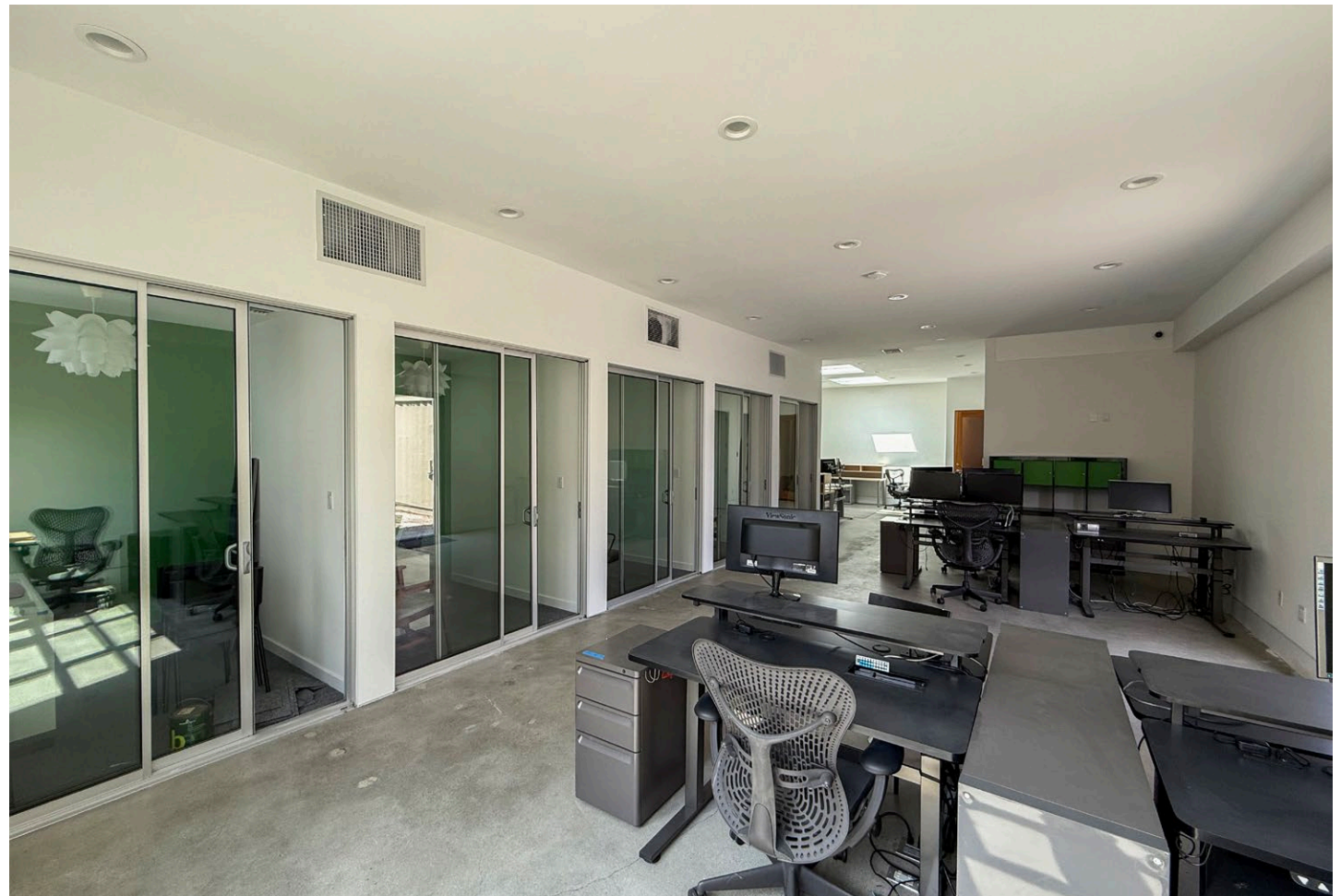
HVAC

Large Patio

Gated On-site Parking

Restroom with a Shower

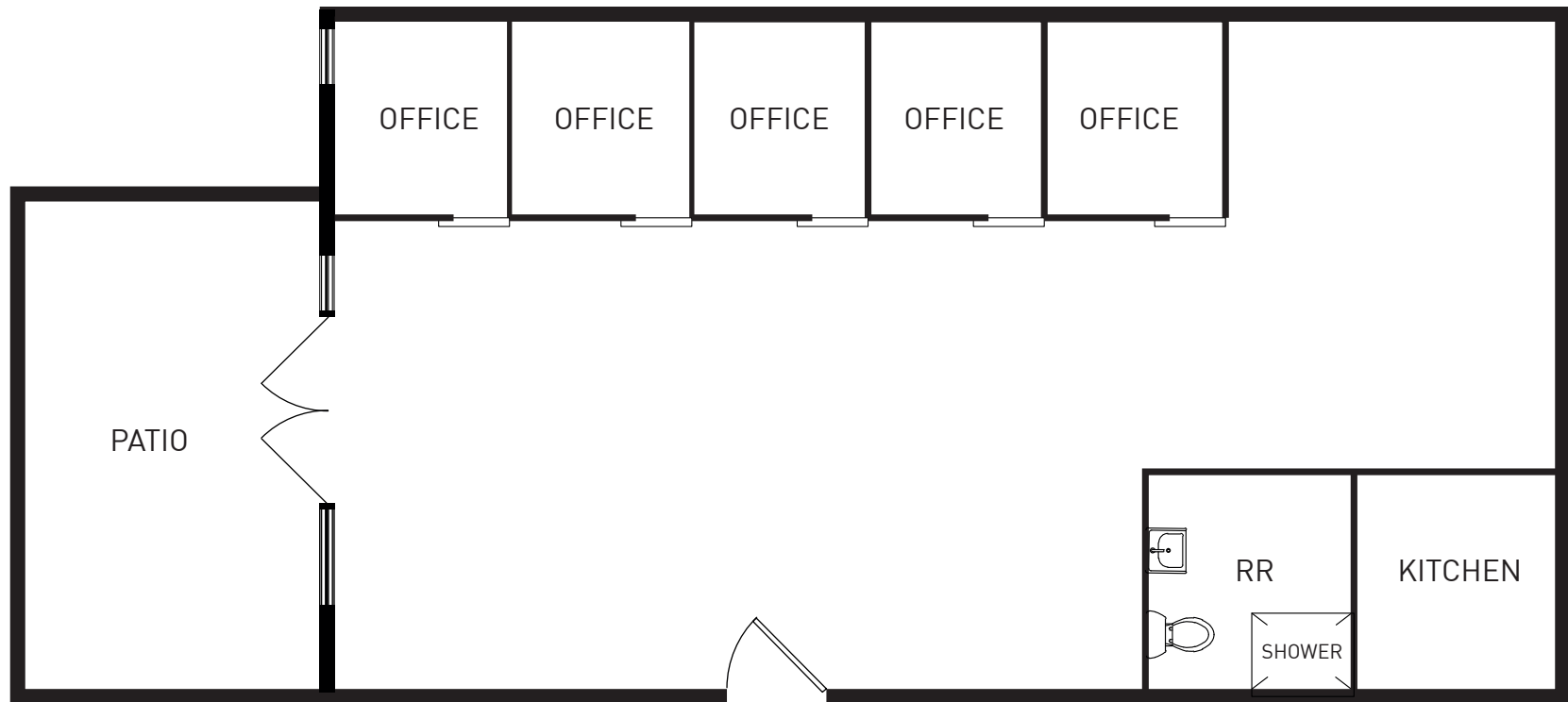
Furnished



No warranty or representation is made to the accuracy of the foregoing information. Terms of sale or lease are subject to change or withdrawal without notice.

©2025 INDUSTRY PARTNERS, INC.

GROUND FLOOR
±1,200 RSF



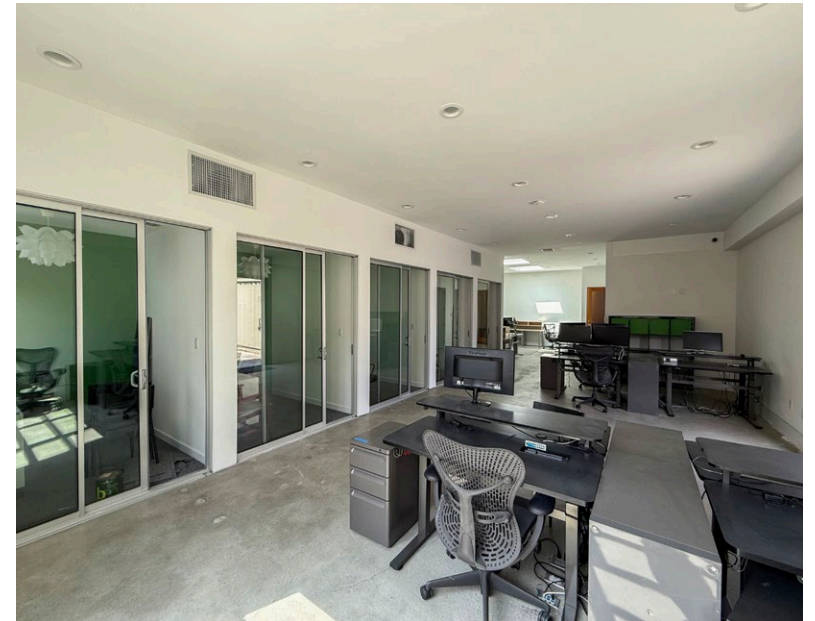
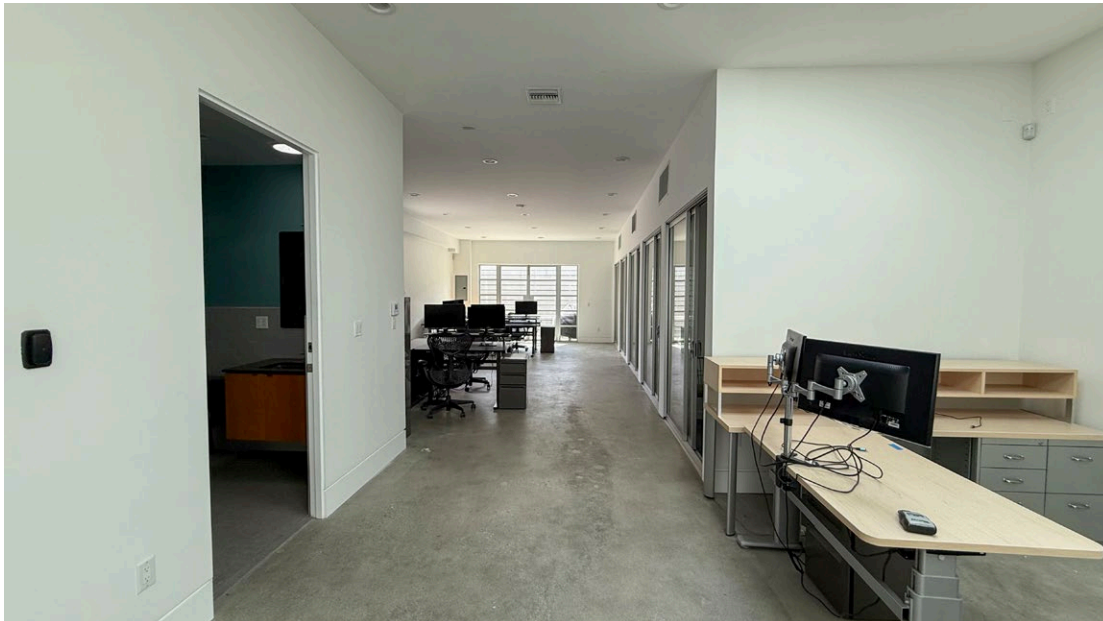
NOT TO SCALE.
Floor plan for information purposes only.
Layout and furnishings may vary

FOR LEASE

CREATIVE OFFICE

2632 LA CINENEGA AVE LOS ANGELES CA 90034

PROPERTY PHOTOS



8 min
WALK



Hi-Lo Liquor: Hi-Lo Liquor offers a curated selection of craft beers, fine wines, and unique spirits, perfect for those seeking quality beverages. The store's knowledgeable staff and eclectic offerings make it a popular destination for both connoisseurs and casual shoppers alike.

6 min
WALK



Cognoscenti Coffee: Cognoscenti Coffee is a specialty coffee shop known for its expertly brewed coffee and minimalist, modern ambiance. It's an ideal spot for coffee enthusiasts who appreciate the finer nuances of coffee, offering a serene setting perfect for work or relaxation.

5 min
WALK



Blum & Poe: Blum & Poe is a contemporary art gallery that showcases a diverse range of works from both established and emerging artists. The gallery's elegant space and thought-provoking exhibitions make it a cultural gem in the Culver City art scene.

10 min
WALK



Father's Office: Known for its gourmet burgers and extensive craft beer selection, Father's Office provides a lively, pub-like atmosphere. The indoor seating is complemented by an inviting bar area, making it a great place to enjoy high-quality food and drinks in a vibrant setting.

3 min
DRIVE



Margot: Margot offers a refined dining experience with a menu inspired by Mediterranean and California cuisine. The rooftop setting provides stunning views and a chic, stylish ambiance, perfect for a memorable meal with friends or a romantic evening out.

3 min
DRIVE



Roberta's: Roberta's brings its renowned Brooklyn-style pizza to Culver City, offering a menu that includes a variety of creative and delicious pizzas. The relaxed, rustic setting and emphasis on high-quality ingredients make it a favorite among locals and visitors.

4 min
DRIVE



Blue Bottle Coffee (at Platform): Blue Bottle Coffee at Platform offers a serene space to enjoy freshly brewed coffee made from high-quality beans. The minimalist design and commitment to excellent coffee make it a go-to spot for coffee lovers in the area.

6 min
WALK



Monroe Place Sandwiches: Monroe Place is a women-owned sandwich shop in Culver City, Los Angeles, known for creative, high-quality sandwiches like the roast beef "Court Street" and vegetarian "Lil' Bambino." With unique drinks and a welcoming vibe, it's a local favorite for lunch.

5 min
DRIVE



Erewhon (at Culver Steps): Erewhon at Culver Steps is a high-end grocery store known for its organic and health-focused products. The store's modern design and wide selection of gourmet foods and wellness items provide a unique shopping experience.

10 min
WALK



Helms Bakery: A historic landmark originally founded in 1931, known for its home-delivered baked goods and as the official bread of the 1932 Olympics. After closing in 1969, it was revitalized into the Helms Bakery District—a vibrant hub for dining, design, and community events.

