

PHILLIP STONE WAY

Versatile commercial/residential zoning

Strategic location in Central City area

Ideal for commercial enterprise or residential projects



LAND INVESTMENT OPPORTUNITY

CONTENTS

PROPERTY INFORMATION	3
LOCATION INFORMATION	5

PRESENTED BY

- **BO BARRON, CCIM**
Managing Director
O: 270.926.1101 x170
C: 270.313.2444
E: bo@wgbarron.com

CONFIDENTIALITY & DISCLAIMER

The information contained herein is proprietary and confidential. It is intended only for the use of the party receiving it from Barron Commercial Group. and is not to be duplicated or distributed to any other party without the written approval of Barron Commercial Group.

The purpose of this analysis is to provide summary information to prospective investors and to establish a preliminary level of interest in the property. THE INFORMATION IS NOT A SUBSTITUTE FOR A THOROUGH DUE DILIGENCE INVESTIGATION BY THE PROSPECTIVE INVESTOR. Although the information contained herein has been secured by sources believed to be reliable, Barron Commercial Group. makes NO REPRESENTATION OF WARRANTY, EXPRESS OF IMPLIED, AS TO THE ACCURACY OF THE INFORMATION, including but not limited to number of legal units, income and expenses of the property; projected financial performance of the property; size and square footage of the property; presence or absence of contaminating substances, lead, PCB's or asbestos; compliance with the Americans with Disabilities Act; physical condition or age of the property or improvements' suitability for a prospective investors' intended us; or financial condition of occupancy plans of tenant. Barron Commercial Group. has not conducted an investigation for verified the information.

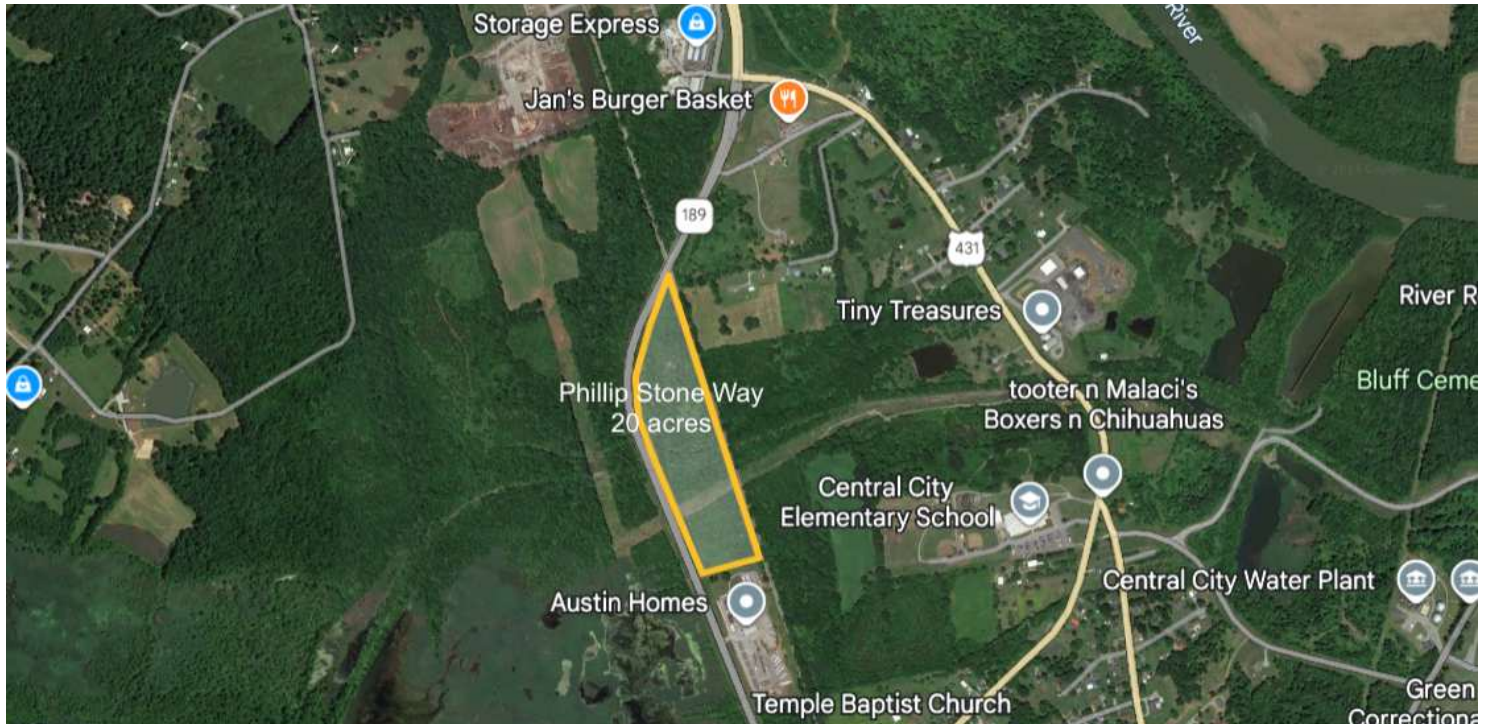
ALL POTENTIAL INVESTORS ARE RESPONSIBLE TO TAKE APPROPRIATE STEPS TO VERIFY ALL INFORMATION SET FORTH HEREIN AND CONDUCT THEIR OWN THOROUGH DE DILIGENCE BEFORE PURCHASING THE PROPERTY. Potential investors assume all risk for any inaccuracies or inconsistencies.

ALL PROPERTY SHOWINGS ARE BY APPOINTMENT ONLY. PLEASE ALLOW 24-48 HOUR NOTICE IN SCHEUDLING YOUR SHOWING.



1 | PROPERTY INFORMATION

Executive Summary



OFFERING SUMMARY

Lot Size: 20 Acres
 Zoning: Residential/Agricultural

PROPERTY OVERVIEW

Explore the boundless opportunities offered by this exceptional property at Phillip Stone Way, Central City, KY, 42330. Boasting a versatile commercial/residential zoning, this expansive parcel of land beckons as a prime investment opportunity in the vibrant Central City area. Embrace the potential to establish a unique commercial enterprise, cultivate residential projects, or develop a combination of both. The strategic location ensures easy access to key amenities and transport links, making it an ideal choice for visionary land investors seeking to harness the potential of this dynamic area. Seize the chance to shape the future of this remarkable property and unlock its myriad possibilities.

PROPERTY HIGHLIGHTS

- Versatile commercial/residential zoning
- Strategic location in Central City area
- Ideal for commercial enterprise or residential projects
- Easy access to key amenities and transportation links
- Expansive parcel of land with boundless potential
- Prime investment opportunity for visionary land investors



2 | LOCATION INFORMATION

Regional Map

Location Map

Retailer Map

