



WESTCHASE CORPORATE PARK

11201-11331 RICHMOND AVE



DAN MEYER

danmeyer@mcmmanagement.com

meyercarrington.com

O: 713-668-2369

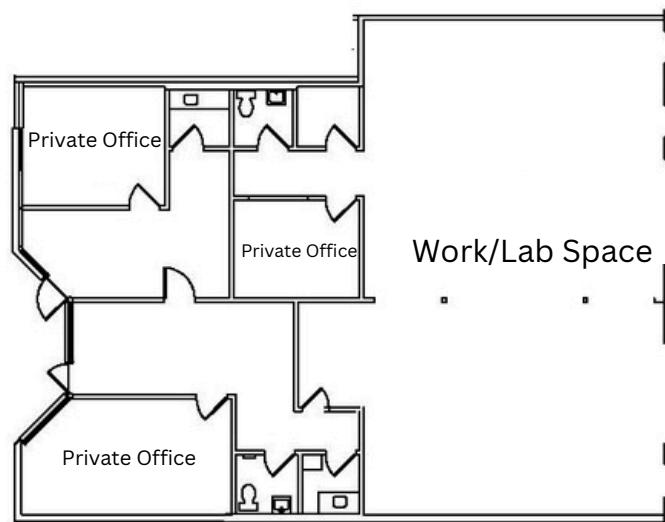
C: 713-806-8940

MEYER CARRINGTON



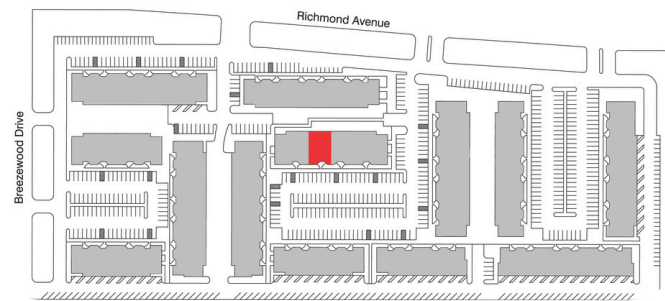
11271 RICHMOND AVE

**SUITE
H103-104
3,169 SF**



Suite Layout

- 3,169 SF office/lab space
 - Space can be demised to +/-1,600 SF
- Tenant controlled HVAC
- Expansive open workspace
- Drive up access
- Two restrooms
- 3-phase power
- Conveniently located with direct access to Beltway 8 and Westpark Tollway



DAN MEYER

danmeyer@mcmanagement.com

meyercarrington.com

O: 713-668-2369

C: 713-806-8940

MEYER CARRINGTON