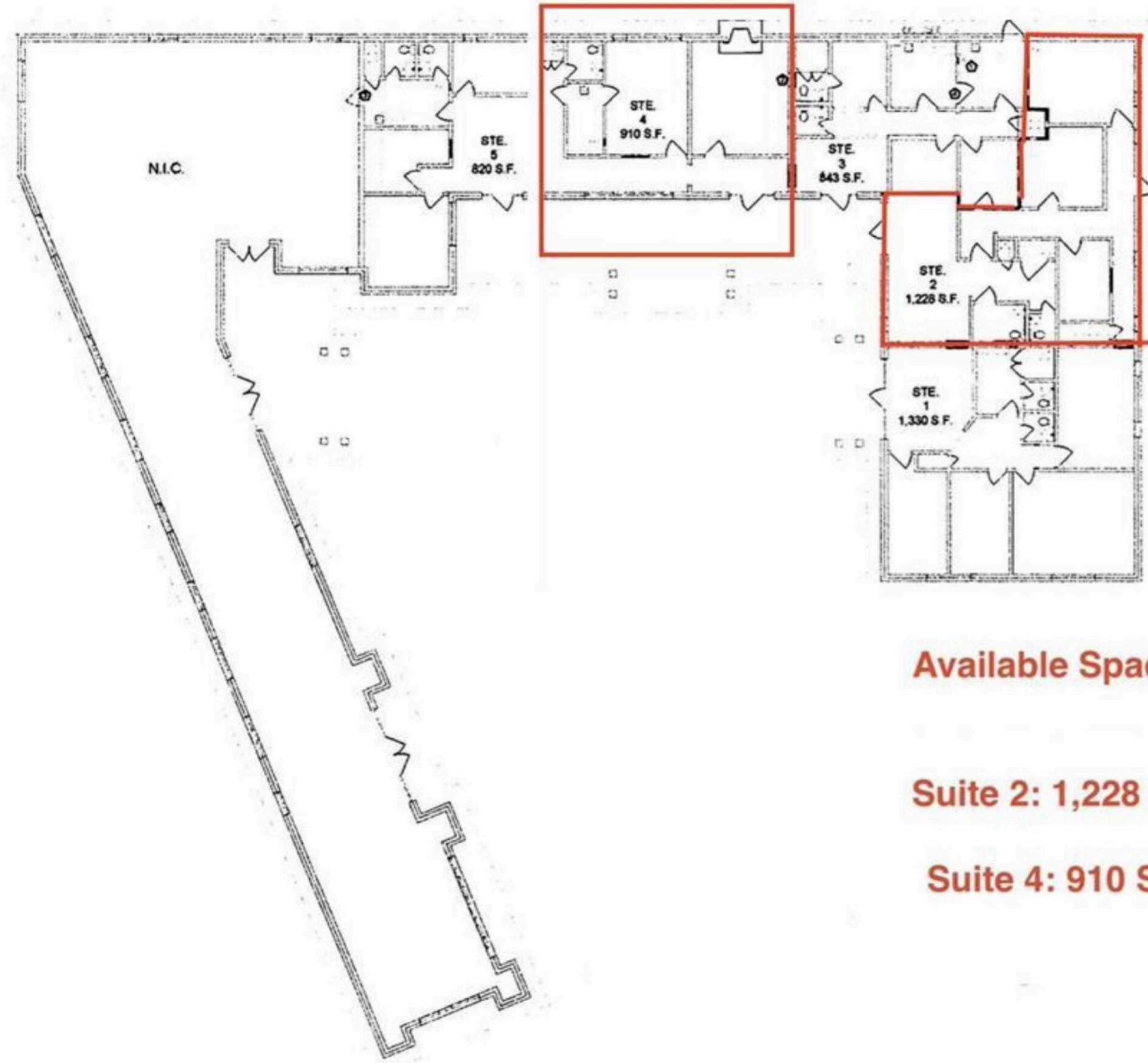




DRAWN BY AL
 CHECKED BY RH
 DATE 08 DEC 2024



- NOTES**
- 1. EXISTING ELECTRICAL PANEL COVER SEALED SHUT WITH SHEET METAL SCREEN
 - 2. EXISTING DOOR AND FRAME STILL WITHIN HALL OF TOILET, GYPSUM BOARD OVER OPENING ON OPPOSITE SIDE.
 - 3. EXISTING DOOR AND FRAME REMAIN DOOR SEALED IN PLACE, NON-OPERABLE.
 - 4. EXISTING DOOR KEY DEAD BOLT EACH SIDE.

Available Space:

Suite 2: 1,228 SF

Suite 4: 910 SF

OFFICE SPACE REALIGNMENT
 FOR
EAM ASSETS, LLC
 4722 TAFT BLVD.
 WICKER FALLS, TX
 4722 TAFT BLVD

Gary Baker & Associates, LLC
 Architects • Interior Designers • Consultants
 4100 Old Jackalope Hwy. Suite D
 Wickenburg, Texas 76092
 (940) 672-0004
 Fax (940) 696-2143

IT IS THE RESPONSIBILITY OF THE CONTRACTOR & SUB-CONTRACTORS TO CAREFULLY REVIEW ALL PLANS AND SPECIFICATIONS PRIOR TO BOOKING. ALL REQUESTS FOR CLARIFICATION OR ADDITIONAL INFORMATION SHALL BE SUBMITTED TO THE ARCHITECT FOR RESPONSE PRIOR TO BOOKING. IF NOT SUBMITTED, NO ADDITIONAL CONSIDERATION FOR CLARIFICATION OR CORRECTIONS SHALL BE ALLOWED AFTER BOOKING.

INTERIM REVIEW
 AND NO RESPONSIBILITY OF DESIGN SHALL BE IN CONNECTION PURPOSES
JOSEPH A. ROSS
 23849

V4 © 2024 BY GARY BAKER & ASSOCIATES, LLC