

FOR SUBLEASE
1110 HAMILTON ST, VANCOUVER, BC



2 UNITS OF MODERN OFFICE SPACE IN YALETOWN

HT
FG

THE HIGH
TECHNOLOGY
FACILITIES GROUP

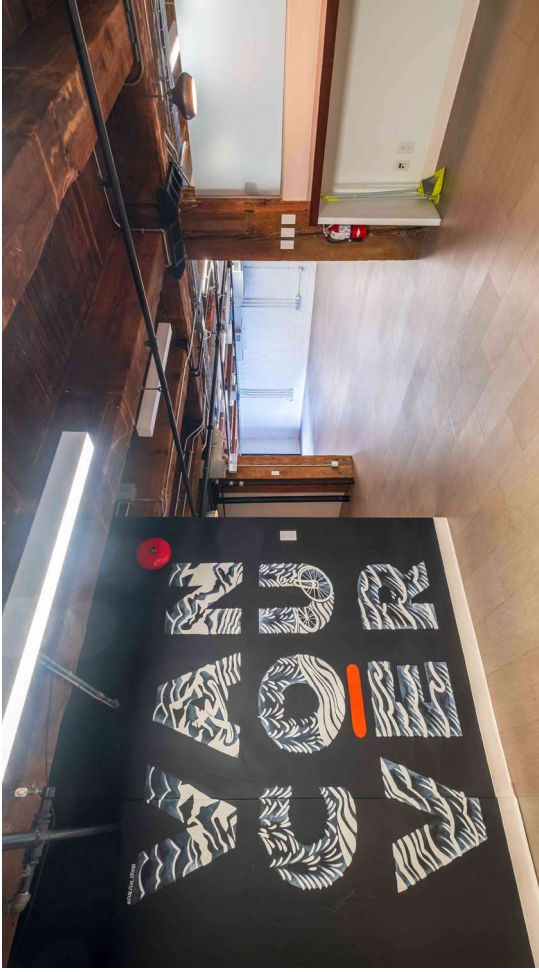
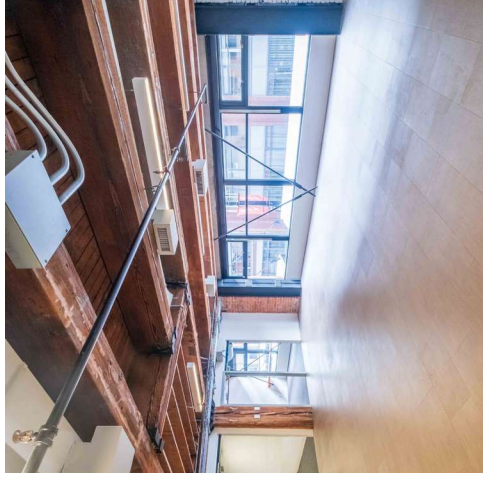
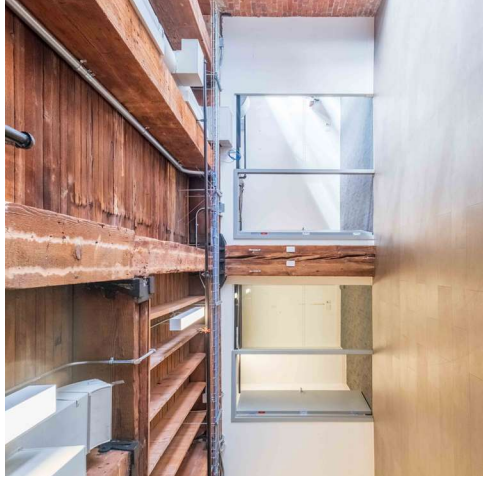
CBRE

PROPERTY DETAILS

UNITS	201 and 309
AREA	Unit 201 2,800 SF Unit 309 1,170 SF Total 3,970 SF
ASKING RENT	Contact Listing Agent
OPS COSTS	\$22.00 PSF (2025 Est.) Janitorial not included.
AVAILABLE	Immediately
SUBLEASE EXPIRY	April 28, 2028

BUILDING HIGHLIGHTS

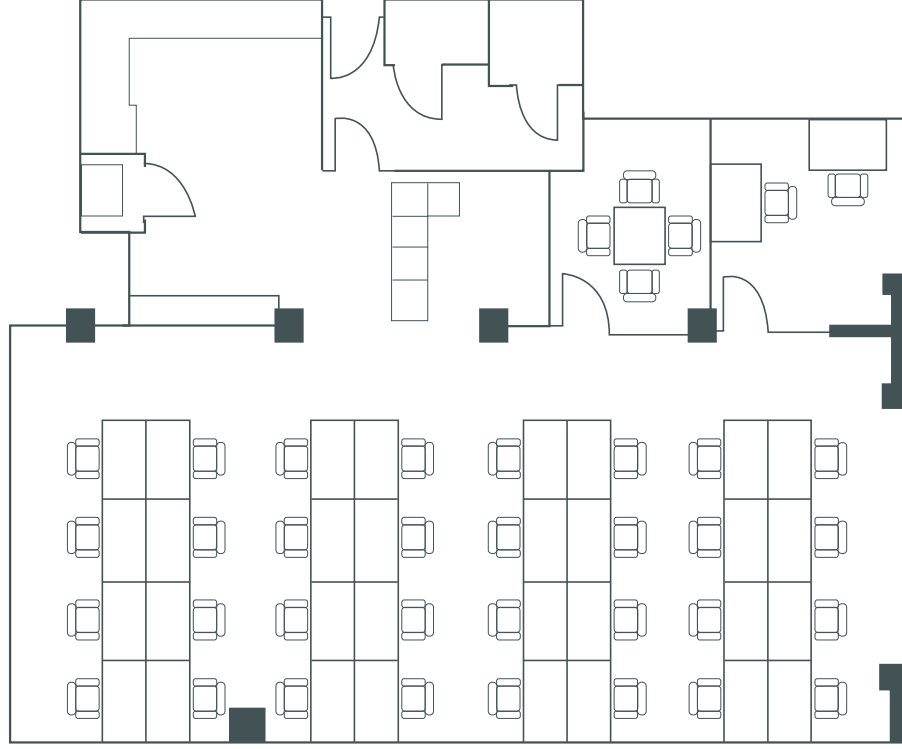
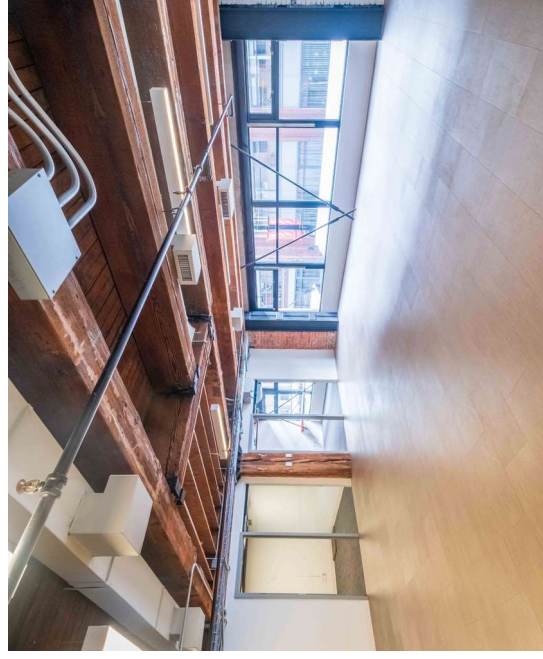
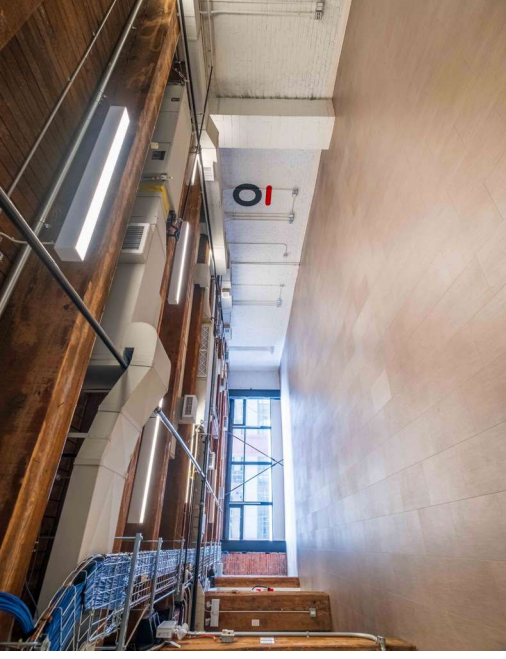
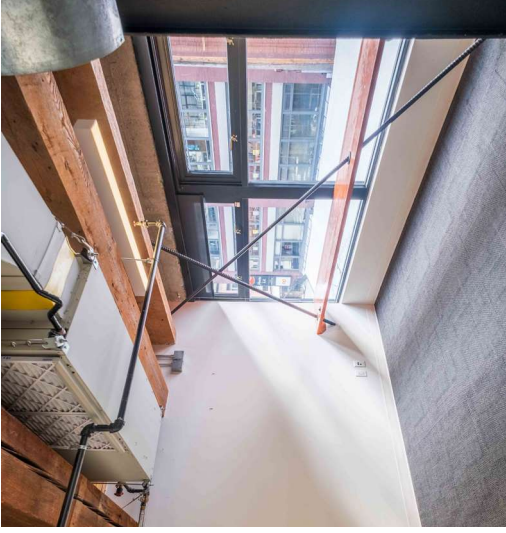
- 2 modern units in a beautifully restored character Yaletown office building
- Corner building with 3 sided windows
- Brick and beam architecture with charm
- Surrounded by countless restaurants, cafes, and amenities
- Quick 3-minute walk to Yaletown-Roundhouse Canada Line Station



FLOOR PLANS

UNIT 201 | 2,800 SF

- Open plan layout
- Space for 32 workstations (current configuration)
- 2 meeting rooms
- Large modern kitchen
- Large windows with natural light
- Brick and beam architecture with charm

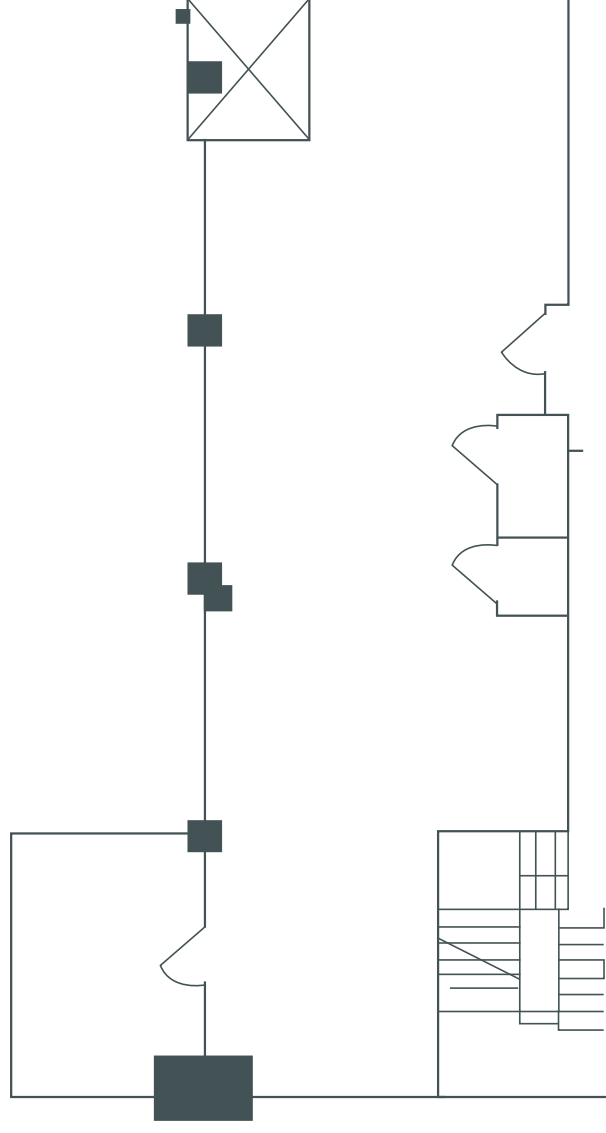
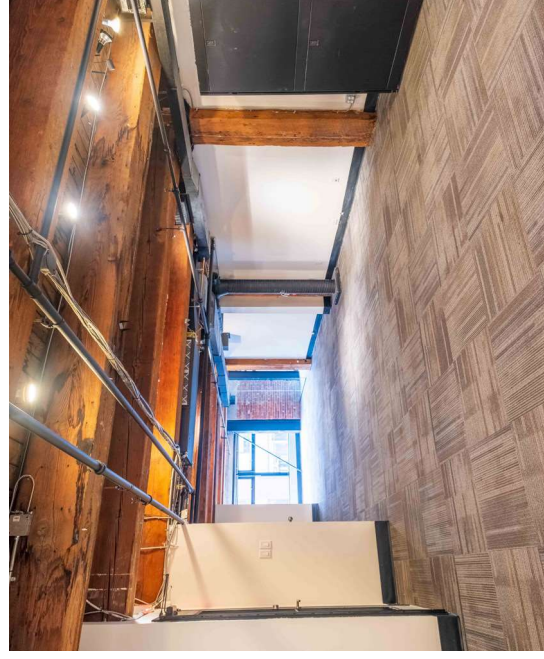
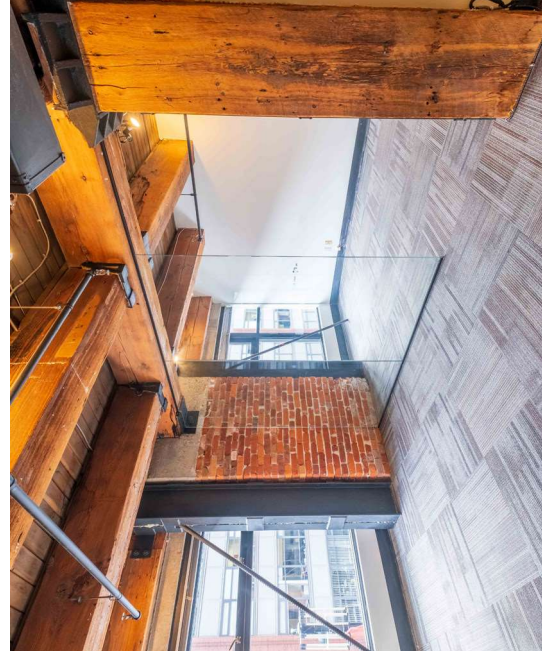
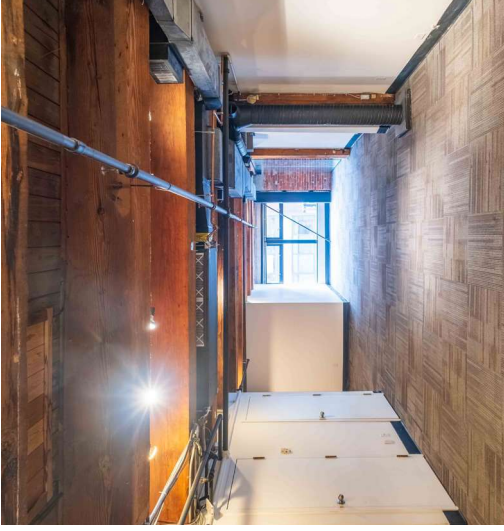


Floorplan is not to scale

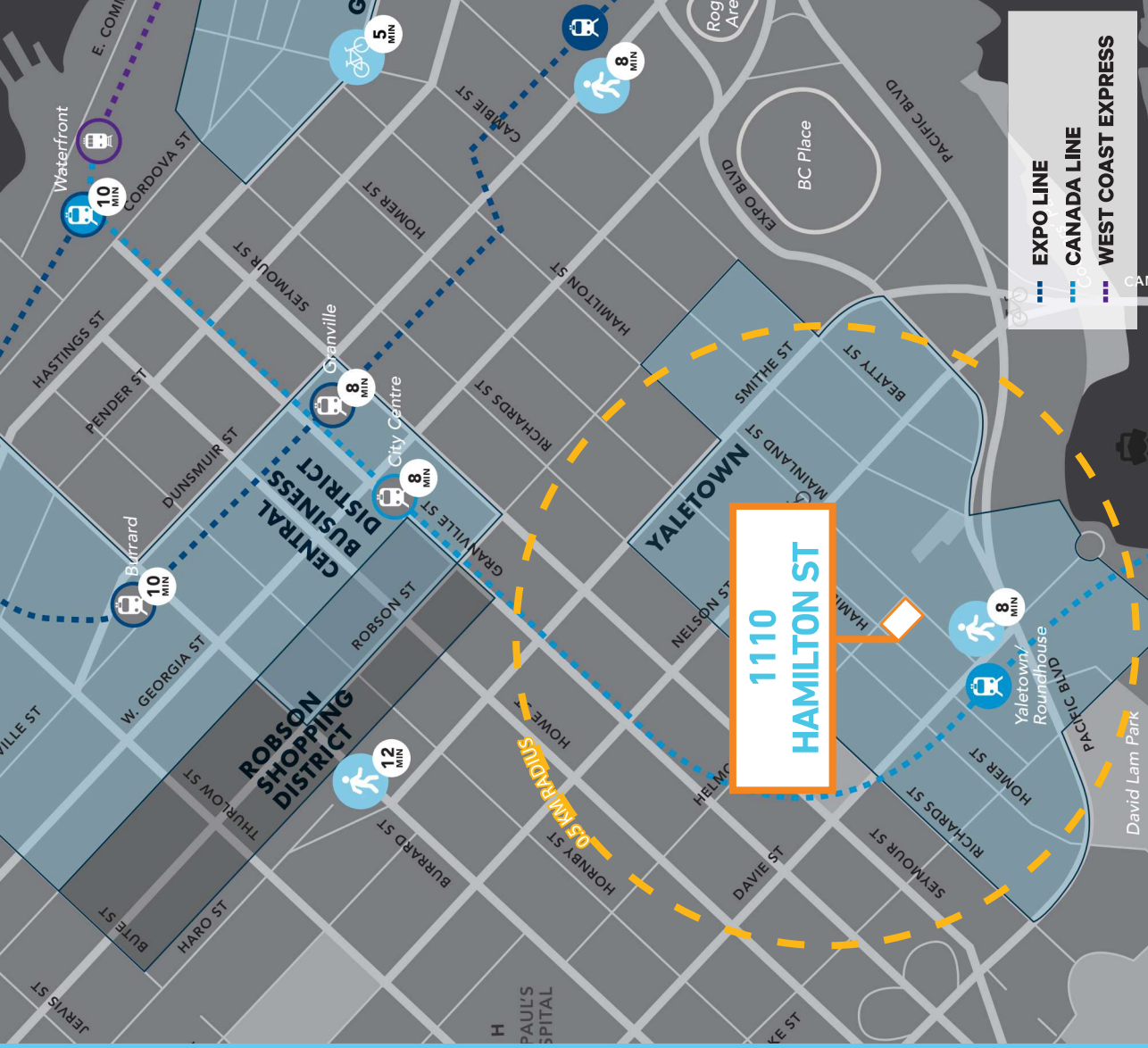
FLOOR PLANS

UNIT 309 | 1,170 SF

- Open plan layout
- 1 large boardroom
- Large window with natural light
- Brick and beam architecture with charm
- Plug-and-play space that is built out



Floorplan is not to scale



THE LOCATION

1110 Hamilton Street is desirably located in the heart of Yaletown. The historic, modernized neighbourhood is home to some of Vancouver's trendiest and most sought-after restaurants, cafes and amenities. The space provides seamless connection to all parts of the Lower Mainland with Yaletown-Roundhouse Skytrain Station a quick 3-minute walk away, the iconic Seawall a 6-minute walk away, and several bus routes that service the area.

NEARBY AMENITIES

0.5 KM RADIUS



79+ Restaurants & Bars



13+ Fitness Facilities



88+ Businesses & Retail

WALK SCORE



97 Walker's Paradise



100 Rider's Paradise



85 Biker's Paradise

FOR MORE INFORMATION CONTACT

ANDRE ALIE DAY
Personal Real Estate Corporation
Senior Associate
CBRE Limited | The HTFG
604 662 5137 | andre.alieday@cbre.com



THE HIGH TECHNOLOGY FACILITIES GROUP



This disclaimer shall apply to CBRE Limited, Real Estate Brokerage, and to all other divisions of the Corporation; to include all employees and independent contractors (CBRE's). All references to CBRE Limited herein shall be deemed to include CBRE, Inc. The information set out herein, including, without limitation, any projections, images, opinions, assumptions and forecasts, is provided for informational purposes only and is not intended to constitute an offer of any financial product or service. The recipient of the information should take such steps as the recipient may deem necessary to verify the information prior to placing any reliance upon the information. The information may change and any property described in the information may be withdrawn from the market at any time without notice or obligation to the recipient from CBRE, CBRE and its affiliates. The information is provided as a service mark of CBRE Limited and/or its affiliated or related companies in other countries. All other marks displayed on this document are the property of their respective owners. All Rights Reserved. Mapping Sources: Canadian Mapping Services canadamapping@cbre.com; DMTI Spatial, Envision Analytics, Microsoft Bing, Google Earth.